



4337 Victory Dr

Columbus, Georgia 31903

Property Highlights

- +/- 816 SF free-standing retail building
- Fenced rear lot with covered portion
- Excellent visibility and frontage along Victory Drive
- Ideal for small business, office, or service-oriented use

Property Overview

For sale at 4337 Victory Drive in Columbus, GA, this free-standing retail building offers +/- 816 square feet of versatile space on a highly visible roadway. The property features a front parking lot for customers, along with a fenced rear lot that includes a covered portion, which is ideal for storage, deliveries, or additional operational needs. With excellent frontage on Victory Drive and easy access to surrounding retail, dining, and residential areas, this property is well-suited for a wide range of small business, office, or service-oriented uses.

Offering Summary

Sale Price:	\$85,000
Building Size:	+/- 816 SF
Lot Size:	+/- 0.15 Acres

Demographics 0.3 Miles 0.5 Miles 1 Mile

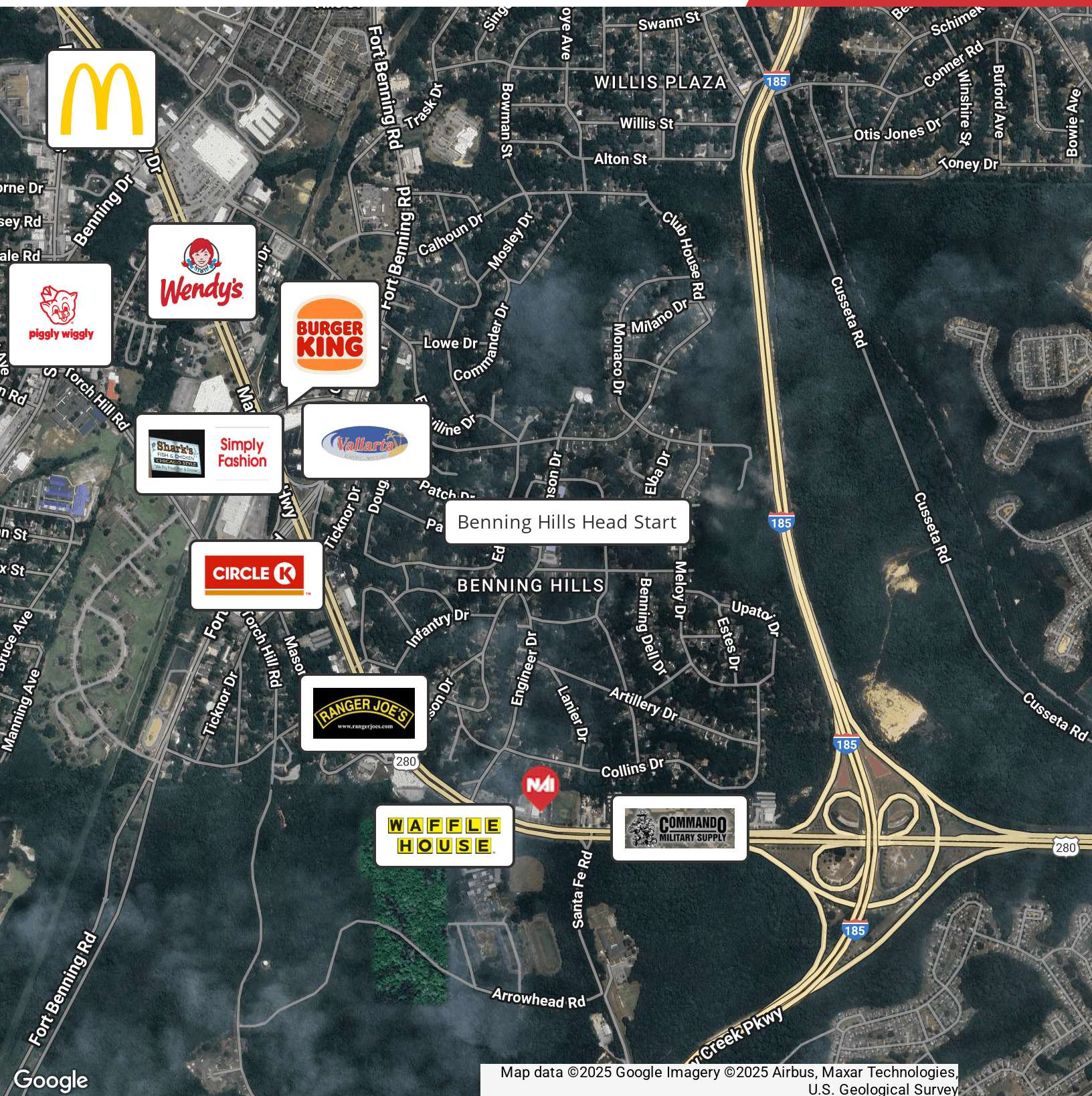
Total Households	123	524	1,980
Total Population	309	1,300	5,500
Average HH Income	\$46,567	\$46,618	\$53,062

For More Information

Shaun Roberts

O: 706 660 5418 x1005

sroberts@g2cre.com | GA #401120



Map data ©2025 Google Imagery ©2025 Airbus, Maxar Technologies, U.S. Geological Survey

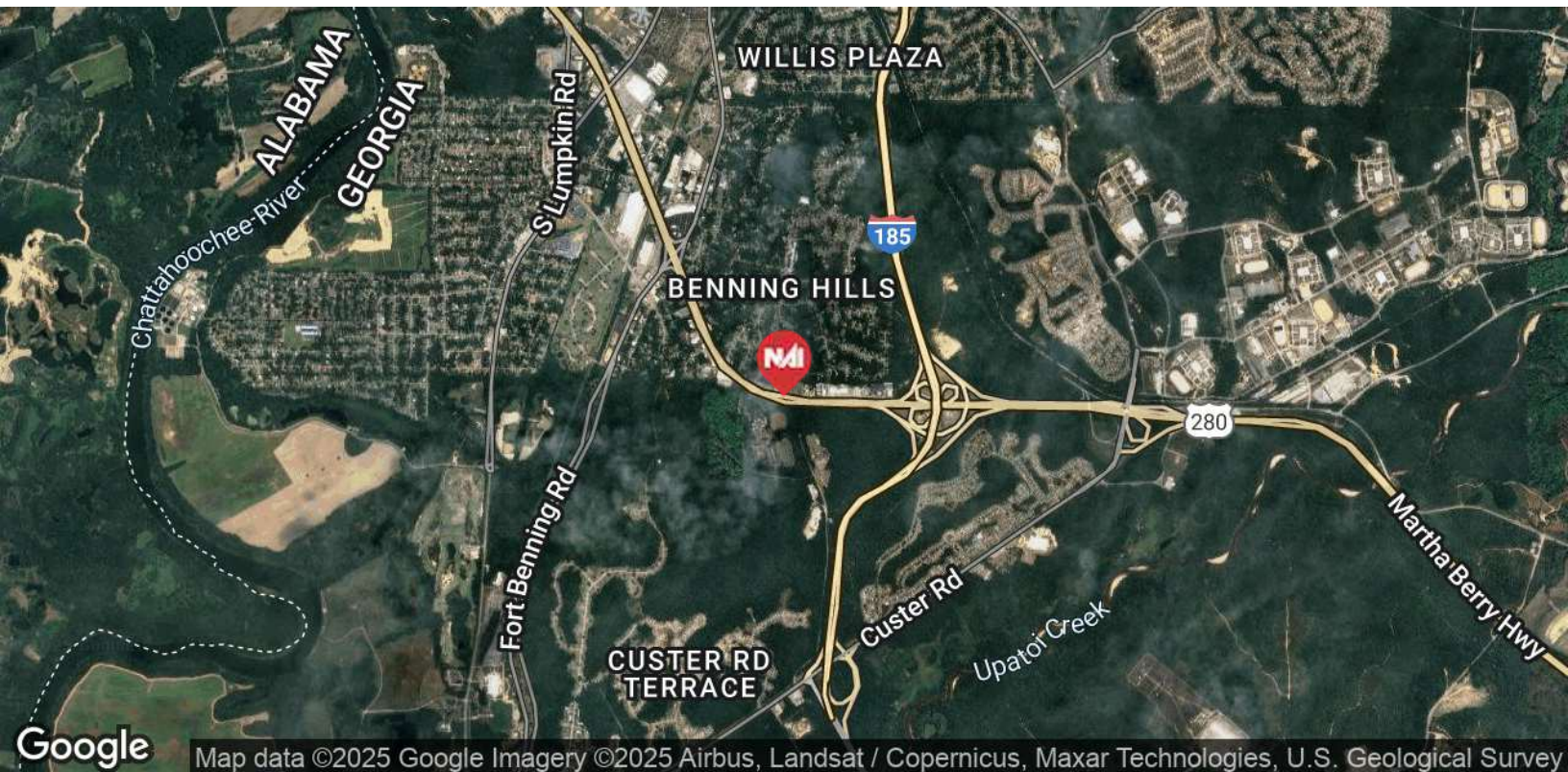
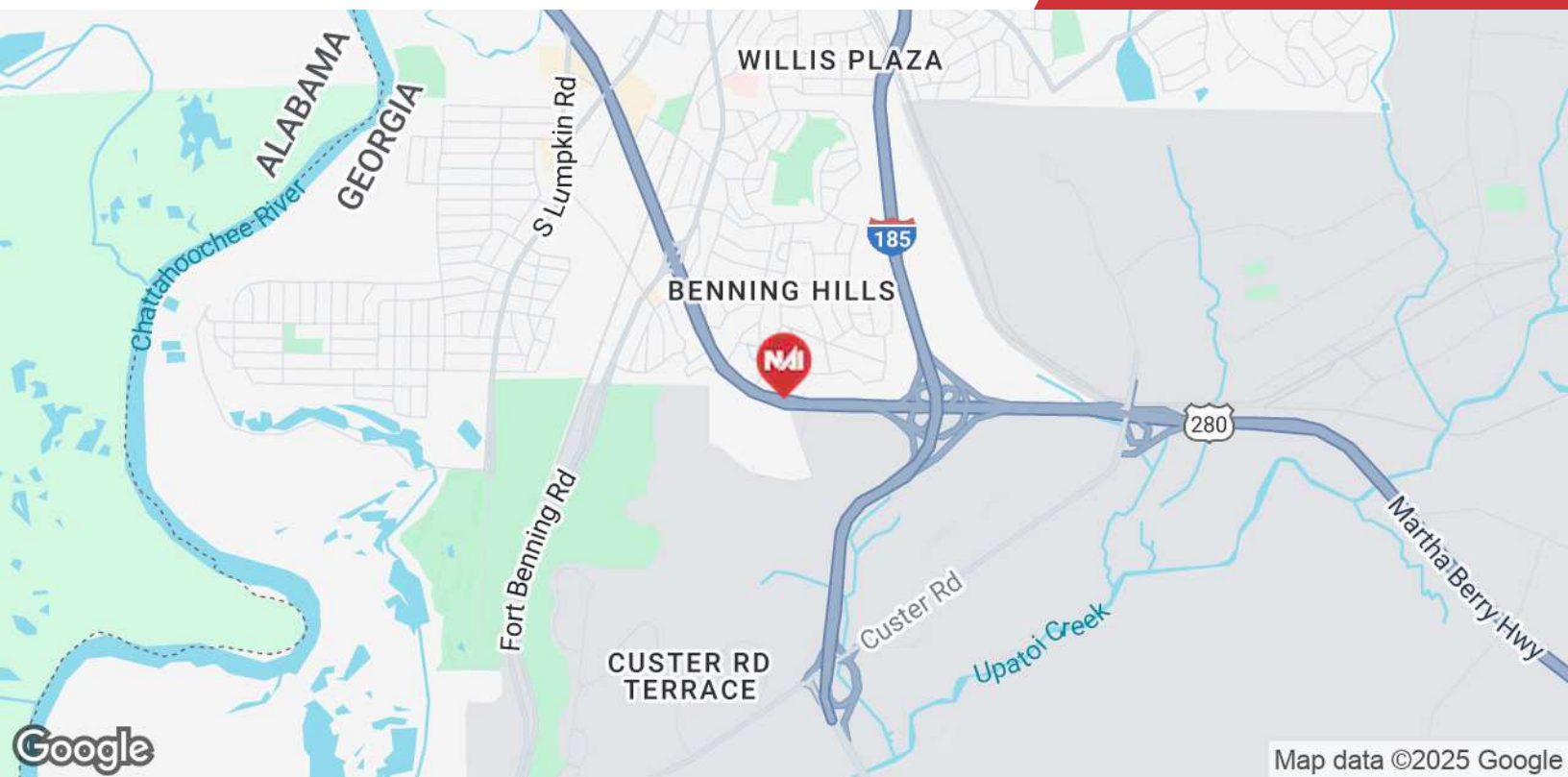
We obtained the information above from sources we believe to be reliable. However, we have not verified its accuracy and make no guarantee, warranty or representation about it. It is submitted subject to the possibility of errors, omissions, change of price, rental or other conditions, prior sale, lease or financing, or withdrawal without notice. We include projections, opinions, assumptions or estimates for example only, and they may not represent current or future performance of the property. You and your tax and legal advisors should conduct your own investigation of the property and transaction.

Post Office Box 4529
Columbus, GA 31904
706 660 5418 tel
G2cre.com



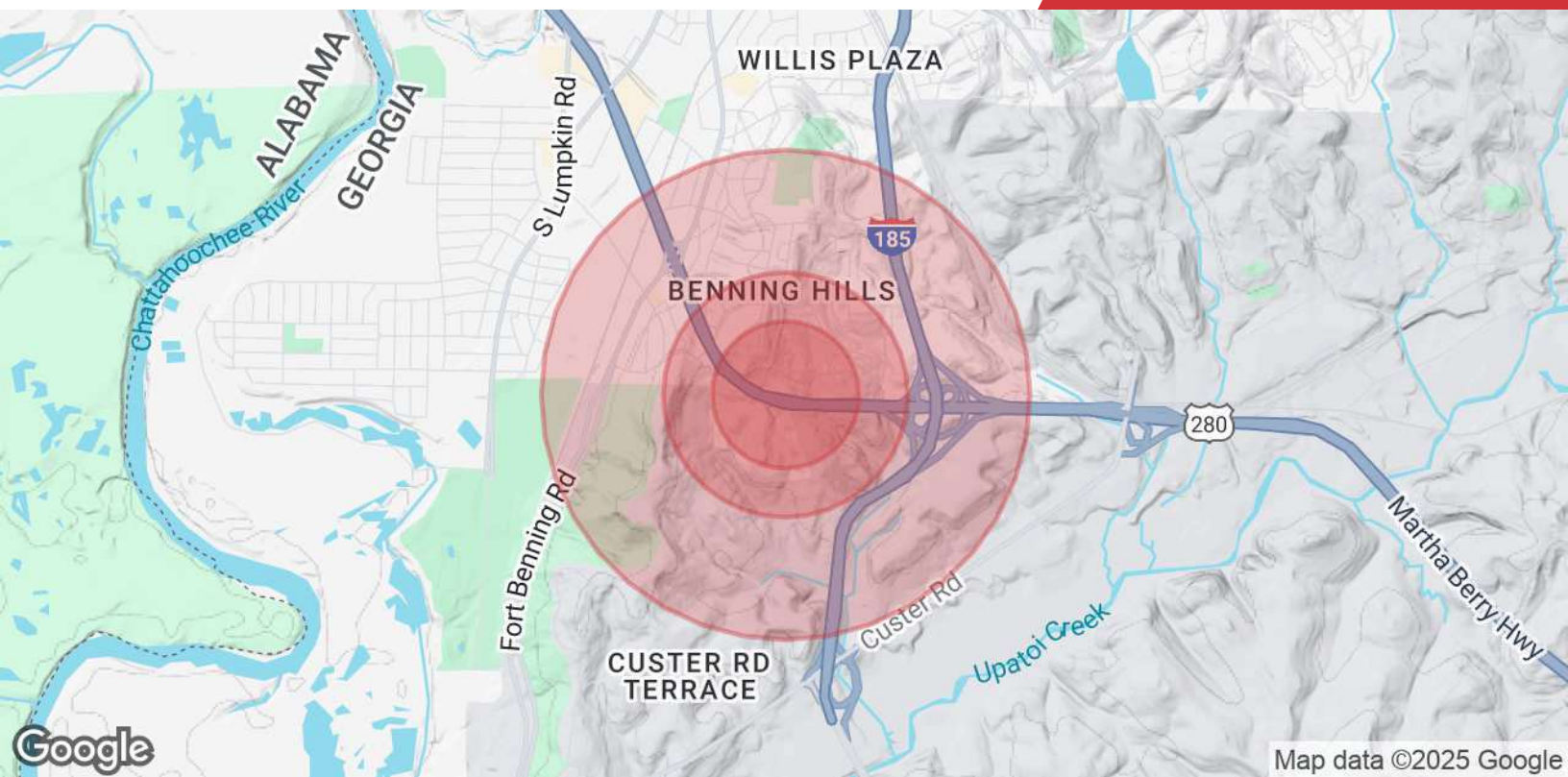
We obtained the information above from sources we believe to be reliable. However, we have not verified its accuracy and make no guarantee, warranty or representation about it. It is submitted subject to the possibility of errors, omissions, change of price, rental or other conditions, prior sale, lease or financing, or withdrawal without notice. We include projections, opinions, assumptions or estimates for example only, and they may not represent current or future performance of the property. You and your tax and legal advisors should conduct your own investigation of the property and transaction.

Post Office Box 4529
Columbus, GA 31904
706 660 5418 tel
G2cre.com



We obtained the information above from sources we believe to be reliable. However, we have not verified its accuracy and make no guarantee, warranty or representation about it. It is submitted subject to the possibility of errors, omissions, change of price, rental or other conditions, prior sale, lease or financing, or withdrawal without notice. We include projections, opinions, assumptions or estimates for example only, and they may not represent current or future performance of the property. You and your tax and legal advisors should conduct your own investigation of the property and transaction.

Post Office Box 4529
Columbus, GA 31904
706 660 5418 tel
G2cre.com



Population

	0.3 Miles	0.5 Miles	1 Mile
Total Population	309	1,300	5,500
Average Age	37	37	33
Average Age (Male)	37	37	32
Average Age (Female)	37	37	33

Households & Income

	0.3 Miles	0.5 Miles	1 Mile
Total Households	123	524	1,980
# of Persons per HH	2.5	2.5	2.8
Average HH Income	\$46,567	\$46,618	\$53,062
Average House Value	\$91,315	\$98,378	\$138,112

Demographics data derived from AlphaMap