



# 1901 4<sup>th</sup> Street

BERKELEY, CA

- PLUG & PLAY OFFICE SPACE
- 6,725 SF
- TERM THROUGH 1/31/25
- 12 ON-SITE RESERVED PARKING SPACES
- FF&E AVAILABLE
- PRICING: NEGOTIABLE

**CBRE**

# Aerial Map

1901 4<sup>th</sup> Street

SAN FRANCISCO FINANCIAL DISTRICT  
10.6 Miles | 15 Minutes Drive

DOWNTOWN OAKLAND  
6.8 Miles | 10 Minutes Drive

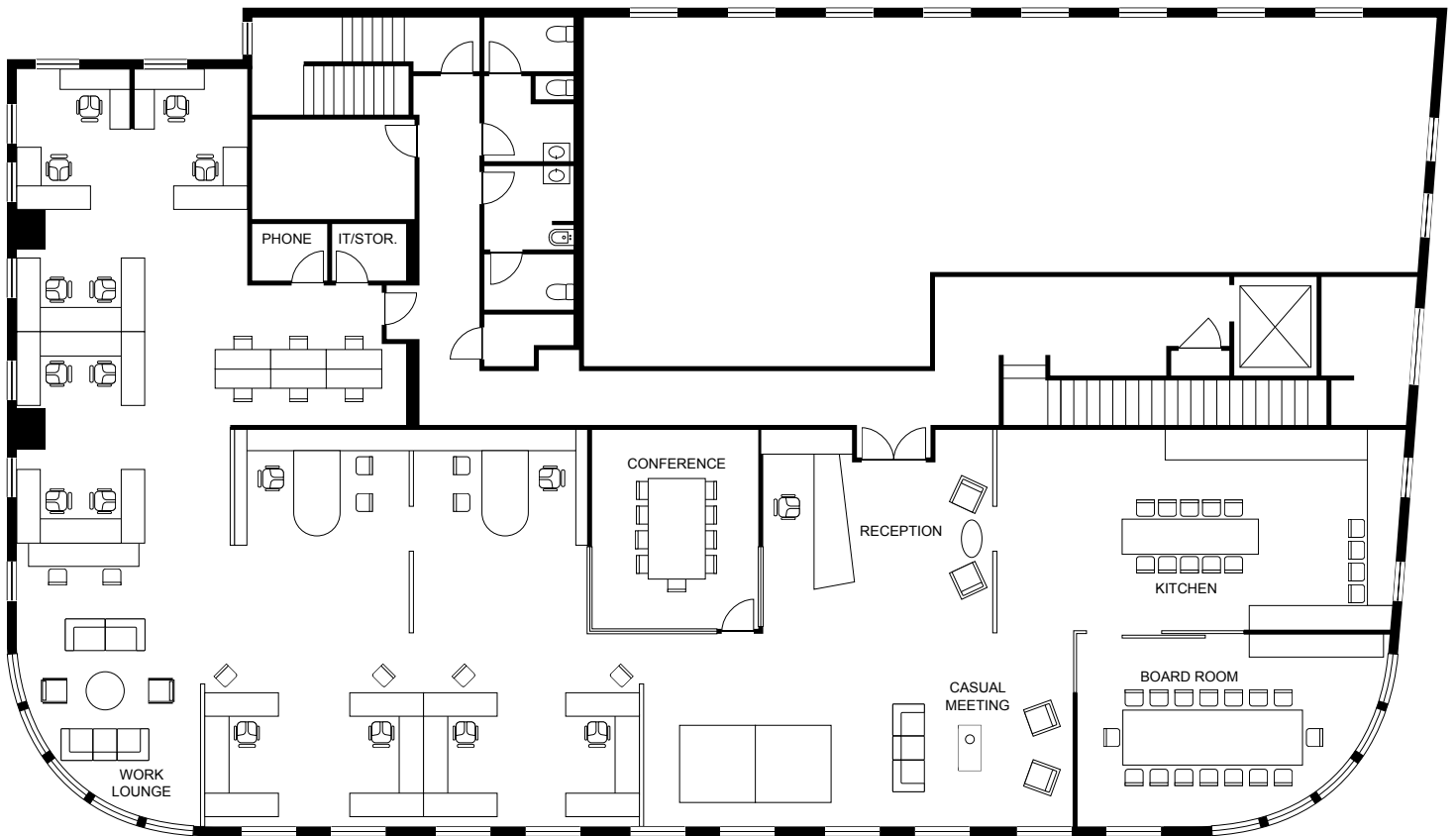
## 4TH ST RETAIL AMENITIES



## 4TH ST CUISINE

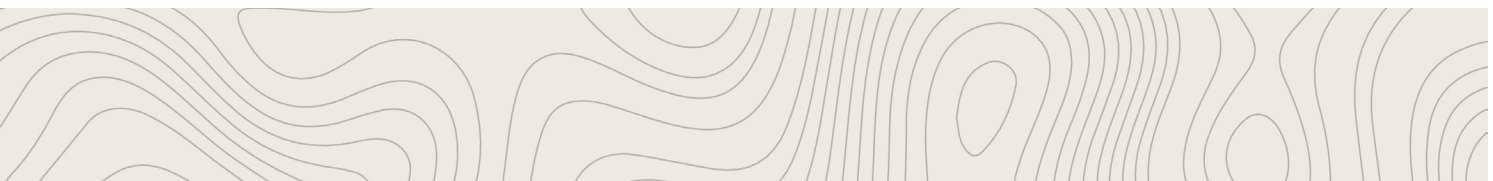


# Floorplan



## Space Overview

- 3 CONFERENCE ROOMS
- 20 WORKSTATIONS
- 6 HOTELING STATIONS
- SMALL PHONE ROOM
- RECEPTION AREA
- FULL KITCHEN





# 1901 4<sup>th</sup> Street

BERKELEY, CA



## CONTACTS

**DANIEL BISABRI**

Senior Vice President  
Lic. 01754122  
daniel.bisabri@cbre.com

**LIAM FARRELL**

Associate  
Lic. 02207523  
liam.farrell1@cbre.com

**CBRE**

© 2024 CBRE, Inc. All rights reserved. This information has been obtained from sources believed reliable but has not been verified for accuracy or completeness. CBRE, Inc. makes no guarantee, representation or warranty and accepts no responsibility or liability as to the accuracy, completeness, or reliability of the information contained herein. You should conduct a careful, independent investigation of the property and verify all information. Any reliance on this information is solely at your own risk. CBRE and the CBRE logo are service marks of CBRE, Inc. All other marks displayed on this document are the property of their respective owners, and the use of such marks does not imply any affiliation with or endorsement of CBRE. Photos herein are the property of their respective owners. Use of these images without the express written consent of the owner is prohibited.