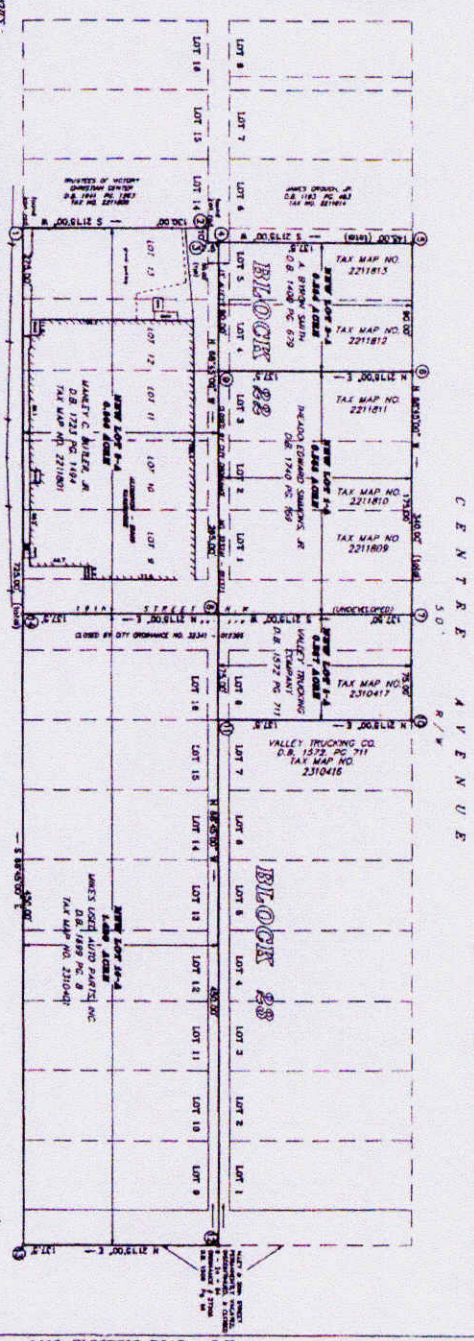


THIS ORIGINAL SIZE PLAT HAS NOT BEEN REDUCED.



- NOTES:
- ALL OF NEW LOT 1-A, AND ADJACENT CORNER 2 AND 7 ARE BASED ON ACCESSION FIELD SURVEY AND THE REVISIONS OF THE FIELD INCLUDING NEW TACKER MARK AND BOUNDARY CORNER RECORDS.
 - THESE LOTS ARE BASED ON THE FIELD SURVEY OF 1914, AND BEEN TAKEN FROM THE FIELD SURVEY OF 1914, AND BEEN TAKEN FROM THE FIELD SURVEY OF 1914, AND BEEN TAKEN FROM THE FIELD SURVEY OF 1914.
 - THESE LOTS ARE BASED ON THE FIELD SURVEY OF 1914, AND BEEN TAKEN FROM THE FIELD SURVEY OF 1914, AND BEEN TAKEN FROM THE FIELD SURVEY OF 1914.
 - THESE LOTS ARE BASED ON THE FIELD SURVEY OF 1914, AND BEEN TAKEN FROM THE FIELD SURVEY OF 1914, AND BEEN TAKEN FROM THE FIELD SURVEY OF 1914.

BLOCK 22
 LOT 1-A IS BOUNDED BY CORNERS 8 TO 7 TO 8 TO 9 TO 6.
 LOT 2-A IS BOUNDED BY CORNERS 5 TO 6 TO 9 TO 4 TO 5.
 LOT 9-A IS BOUNDED BY CORNERS 1 TO 2 TO 3 TO 4 TO 9 TO 8 TO 14 TO 1.

BLOCK 23
 LOT 8-A IS BOUNDED BY CORNERS 7 TO 10 TO 11 TO 8 TO 7.
 LOT 16-A IS BOUNDED BY CORNERS 14 TO 8 TO 11 TO 12 TO 13 TO 14.

BOUNDARY COORDINATES

CORNERS	NORTHING	EASTING
1	10000.0000	20000.0000
2	99718.8290	19952.8831
3	9962.4435	19940.8428
4	9973.4731	19940.8442
5	9776.8417	19981.0091
6	9644.5863	19944.0274
7	9971.3177	19983.8658
8	9900.0254	19926.9038
9	9970.5512	19923.5284
10	10274.4526	19774.4526
11	10282.7649	19743.8978
12	10008.4706	20000.0000
13		
14		



I HEREBY CERTIFY THAT THIS SURVEY IS BASED ON AN ACTUAL FIELD SURVEY AND TO THE BEST OF MY KNOWLEDGE AND BELIEF IS CORRECT.

HYDE PARK LAND CO.
 ROANOKE CITY ENGINEERING
 PLAN NO. 2177

PLAT OF SURVEY FOR
MANLEY C. BUTLER, JR.
 SHOWING THE VACATION OF A PORTION OF 19th STREET, N.W., (0.316 ACRES) AND A PORTION OF A 15' ALLEY (0.083 ACRES) BY CITY ORDINANCE NO. 32341 - 012395 ON 2/2/95, COMBINING SAID PORTION OF STREET AND ALLEY WITH PROPERTIES ABUTTING THEREON, CREATING HEREOF NEW LOTS 1 - A (0.552 ACRE), 2 - A (0.284 ACRE) AND 9 - A (0.866 ACRE), IN BLOCK 22 AND NEW LOTS 8 - A (0.237 ACRE) AND 16 - A (1.420 ACRE) IN BLOCK 23, HYDE PARK LAND COMPANY, ROANOKE CITY, VIRGINIA
 DRAWN JULY 27, 1995
 SCALE 1" = 50'

ROBERT G. CANTLEY, INC.
 LAND SURVEYORS

4415 ELECTRIC ROAD, S.W.
 ROANOKE, VIRGINIA 24014
 (703) 772 - 0055