

NEW INDUSTRIAL DEVELOPMENT COMING SOON!
North Forsyth Industrial Park

FOR LEASE/SALE:
5,000-100,000 SF on 14 acres
IND-1/IND-5 Zoning
Potential Build-to-Suit

DEVELOPMENT OVERVIEW:

The North Forsyth Industrial Park is located on the north-west side of the SE Orange submarket of Orlando with excellent access to UCF, downtown Orlando, E Colonial Drive, SR 408, and SR 417. This is a well-known industrial area of Orlando. This site offers users a central location to Orlando with easy access across the city. Close to transportation and labor. The site is zoned IND-1/IND-5 which provides for light manufacturing and industry.

PROPOSED BUILDING SPECIFICATIONS:

- Spaces ranging in size from 5,000 sf to 50,000 SF
- 5% office space
- Ceiling Height: 22'-30'
- Minimum Available: 5,000 SF
- Dock High/Grade level loading
- Front & rear load
- Sprinklers

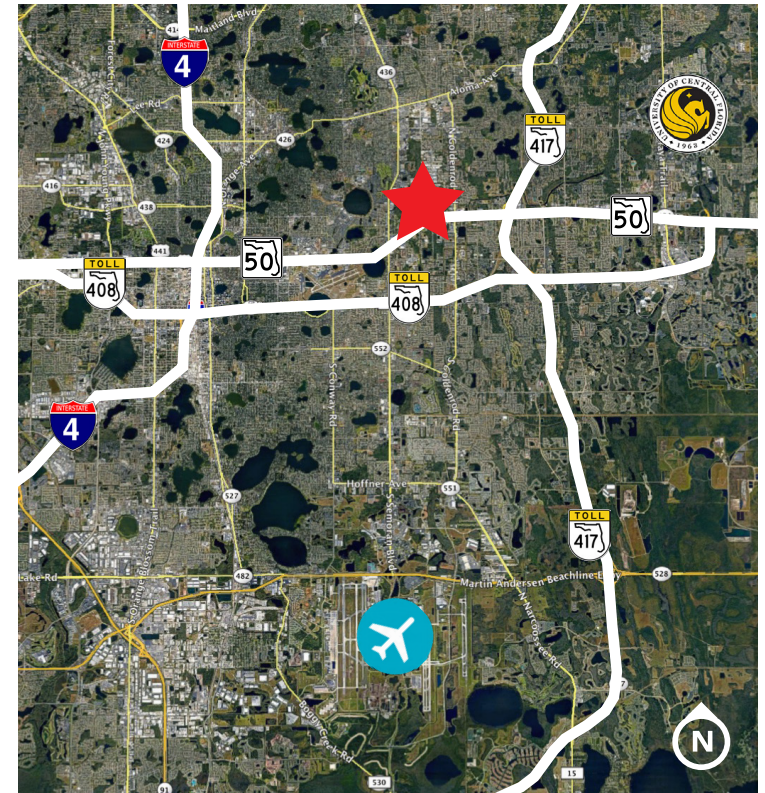
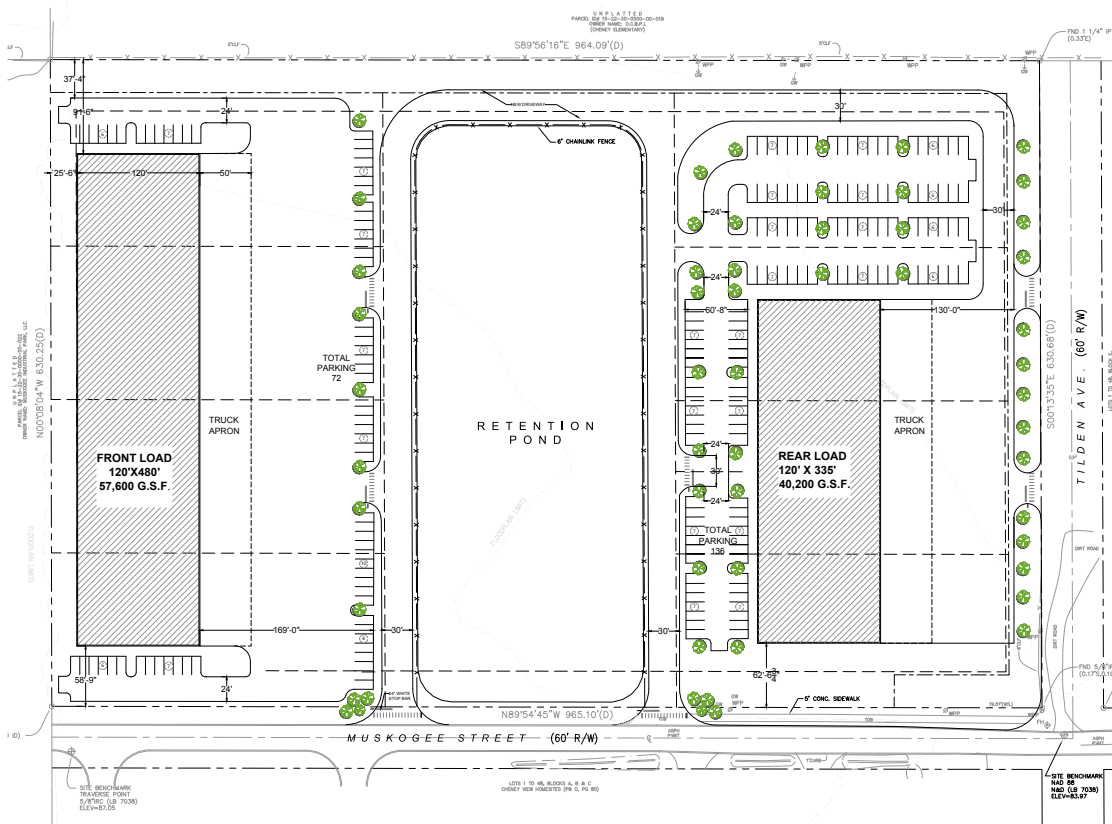


The information contained herein has been obtained from sources deemed reliable, however, HRS makes no guarantees, warranties or representation as to its completeness or accuracy thereof. The presentation of this property is submitted subject to errors, omissions, change of price or conditions, prior to sale or lease or withdrawal without notice.

Monika Chappell
mchappell@harbertrealty.com
407.217.3022

Josh Smith
jsmith@harbertrealty.com
407.377.4050

HarbertRealty.com
407.377.4050
2450 Maitland Center Pkwy
Suite 200
Maitland, FL 32751



ORLANDO INTERNATIONAL AIRPORT	9.9 MILES
UCF	6.9 MILES
I-4	7.1 MILES
SR 408	3.7 MILES
SR 417	3.2 MILES
COLONIAL DRIVE/HWY50	0.3 MILES