

TWO

PRINCESS DRIVE

CLASS 'A' OFFICE SUITE FOR LEASE ±2,277 SF

8502 E Princess Drive | Suite 250 | Scottsdale, AZ 85255

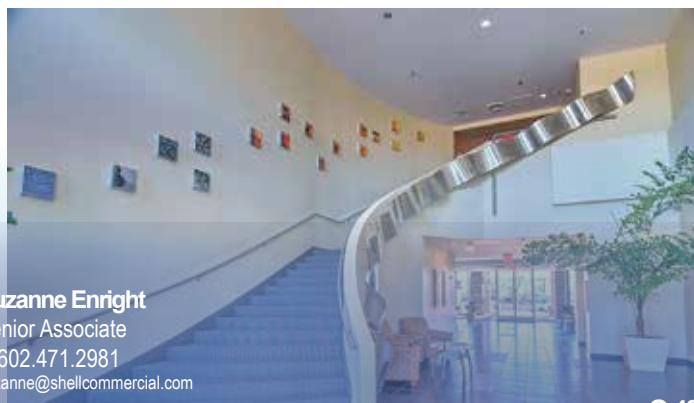
LINK TO VIDEO TOUR



FIBER OPTIC AVAILABLE • PLUG & PLAY • DESKS & CUBICLES INCLUDED!



John Quatrini
Associate Broker
C 602.859.0506
john@shellcommercial.com



Suzanne Enright
Senior Associate
C 602.471.2981
suzanne@shellcommercial.com



O 480 443 3992 16410 N 91st Street | Suite 112 Scottsdale, AZ 85260

The above is subject to prior sales and leasing. This information has been secured from sources we believe to be reliable, but we make no representation or warranties, expressed or implied as to the accuracy of this information.

FEATURES

- **Reception**
- **Conference room**
- **Two (2) offices**
- **Large open office area**
- **Kitchen**
- **Furnished - Desks & cubicles included!**
- **Plug & Play**
- **Fiber optic available**

HIGHLIGHTS / AMENITIES

Parking ratio:
4.0/1000 per RSF



Over 100 restaurants
within 5 minute drive



11 Golf courses
within 5 mile radius



7 Resort hotels
within 5 minute drive

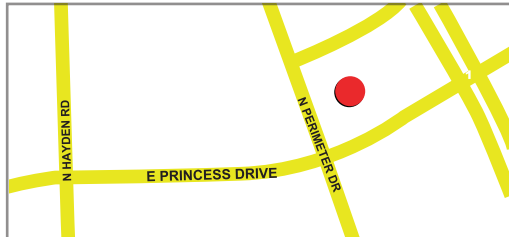
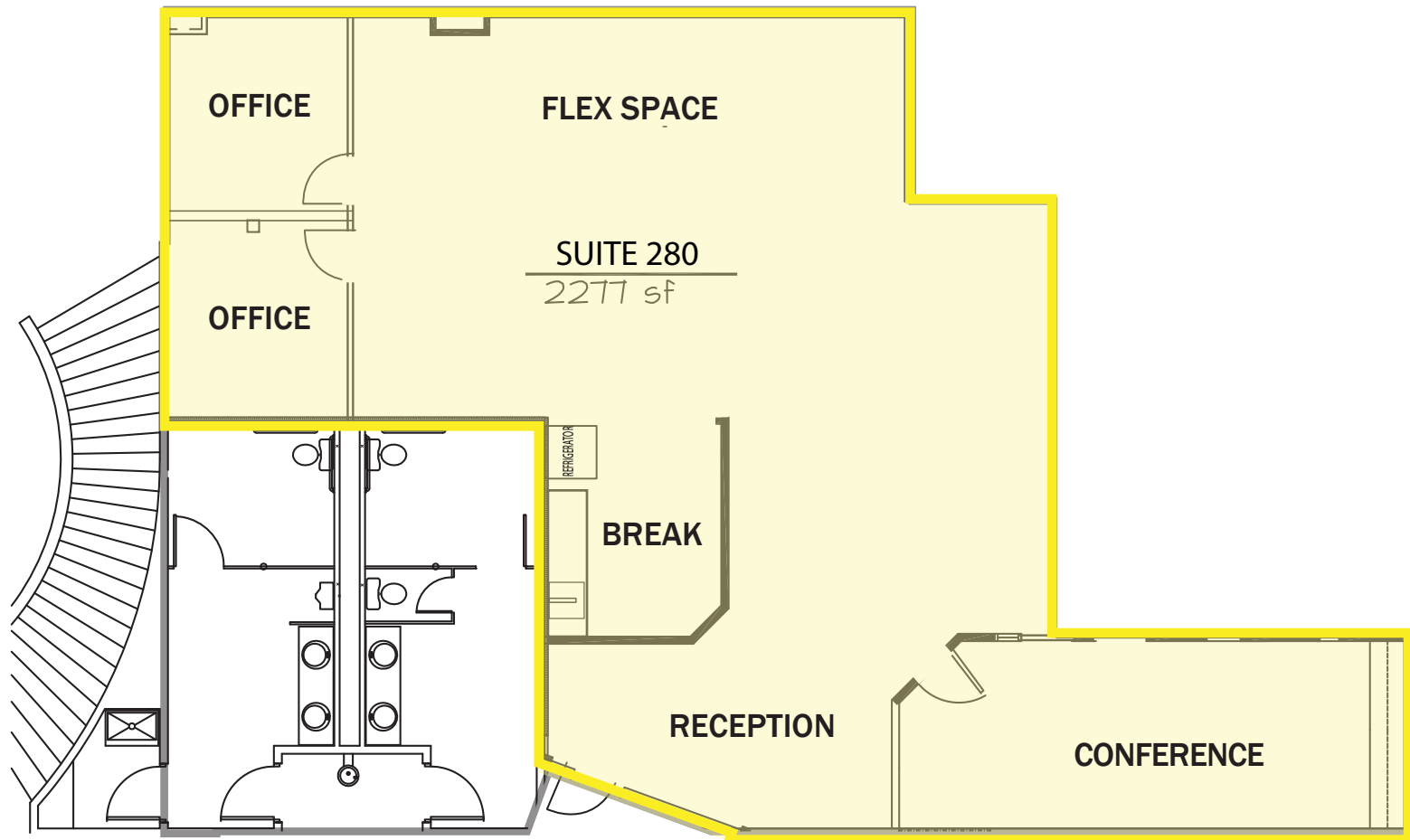


Scottsdale Municipal
Airport - 5 minute drive



2,277± SF

FLOOR PLAN



NOT TO SCALE

All information furnished regarding property for sale, rental or financing is from sources deemed reliable, but no warranty or representation is made to the accuracy thereof and same is submitted to errors, omissions, change of price, rental or other conditions, prior to sale, lease or financing or withdrawal without notice. No liability of any kind is to be imposed on the broker herein. This information has been secured from sources deemed reliable, however, we make no warranties as to its accuracy.



**WITHIN WALKING DISTANCE
TO THE WM PHOENIX OPEN
(1.2 MILES) MAP IT**

CLOSE PROXIMITY TO NORTH SCOTTSDALE'S FINEST SHOPPING, DINING, HIKING, AND ENTERTAINMENT VENUES



SCOTTSDALE QUARTER



KIERLAND COMMONS



SCOTTSDALE PROMENADE



WASTE MANAGEMENT OPEN AT TPC SCOTTSDALE



VILLAGE AT DC RANCH



PINNACLE PEAK HIKING TRAIL