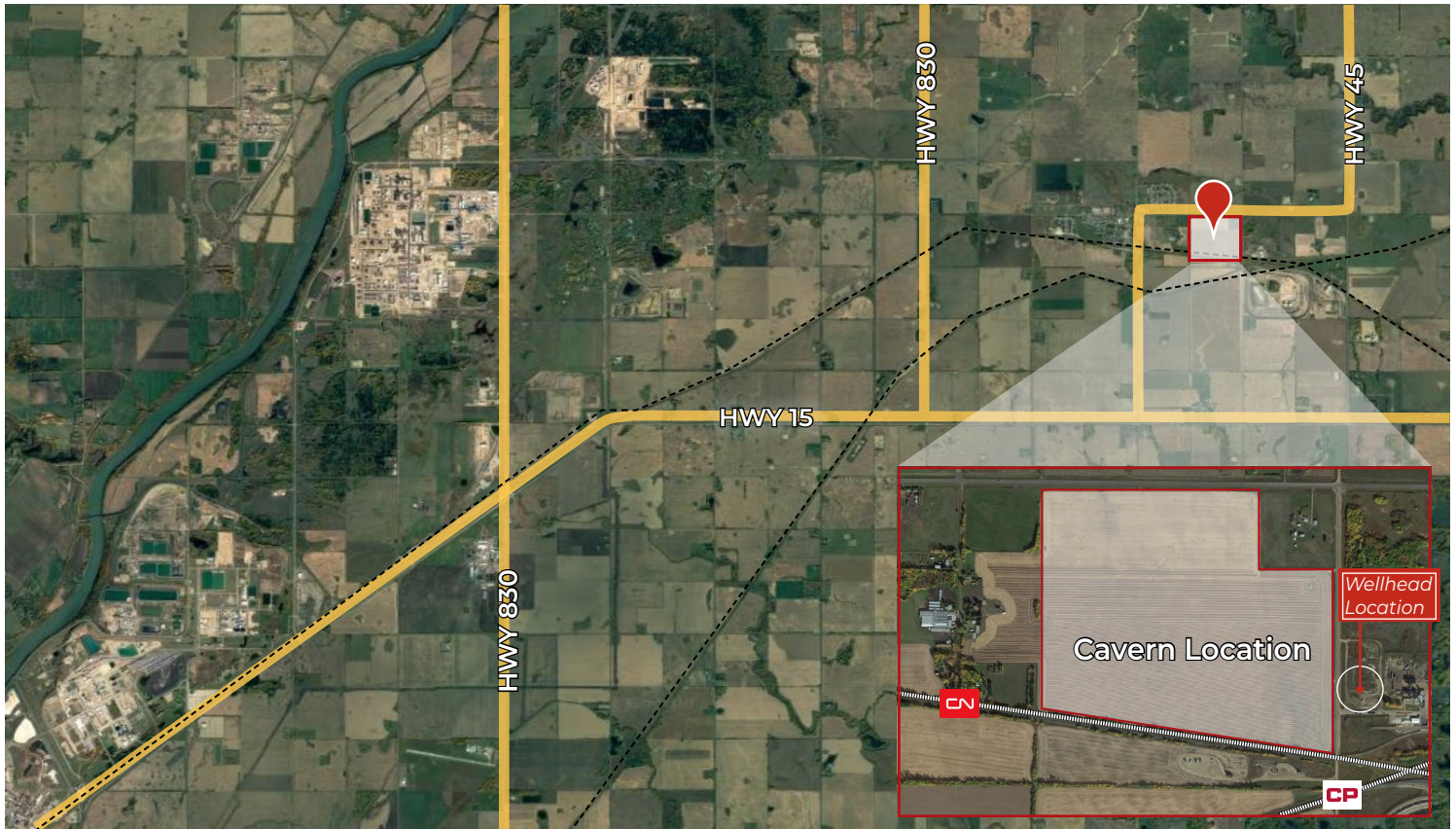


# CAVERN ASSET FOR SALE

## INDUSTRIAL HEARTLAND STORAGE CAVERN

Lamont County, AB



### HIGHLIGHTS

- Rare opportunity to purchase the mineral rights for a salt cavern in Alberta's Industrial Heartland
- Located minutes east of Bruderheim in Lamont County
- Close proximity to major infrastructure including pipelines, rail and utilities
- Strategically located with quick access to the High Load Corridor via Highways 15 & 831
- Surrounded by a variety of sectors including oil, gas, petrochemicals and advanced manufacturing

### CONTACTS

#### JOEL WOLSKI

Director, Associate

C 780.904.5630

joel@royalparkrealty.com

#### SCOTT ENDRES

Partner, Broker

C 780.720.6541

scott@royalparkrealty.com



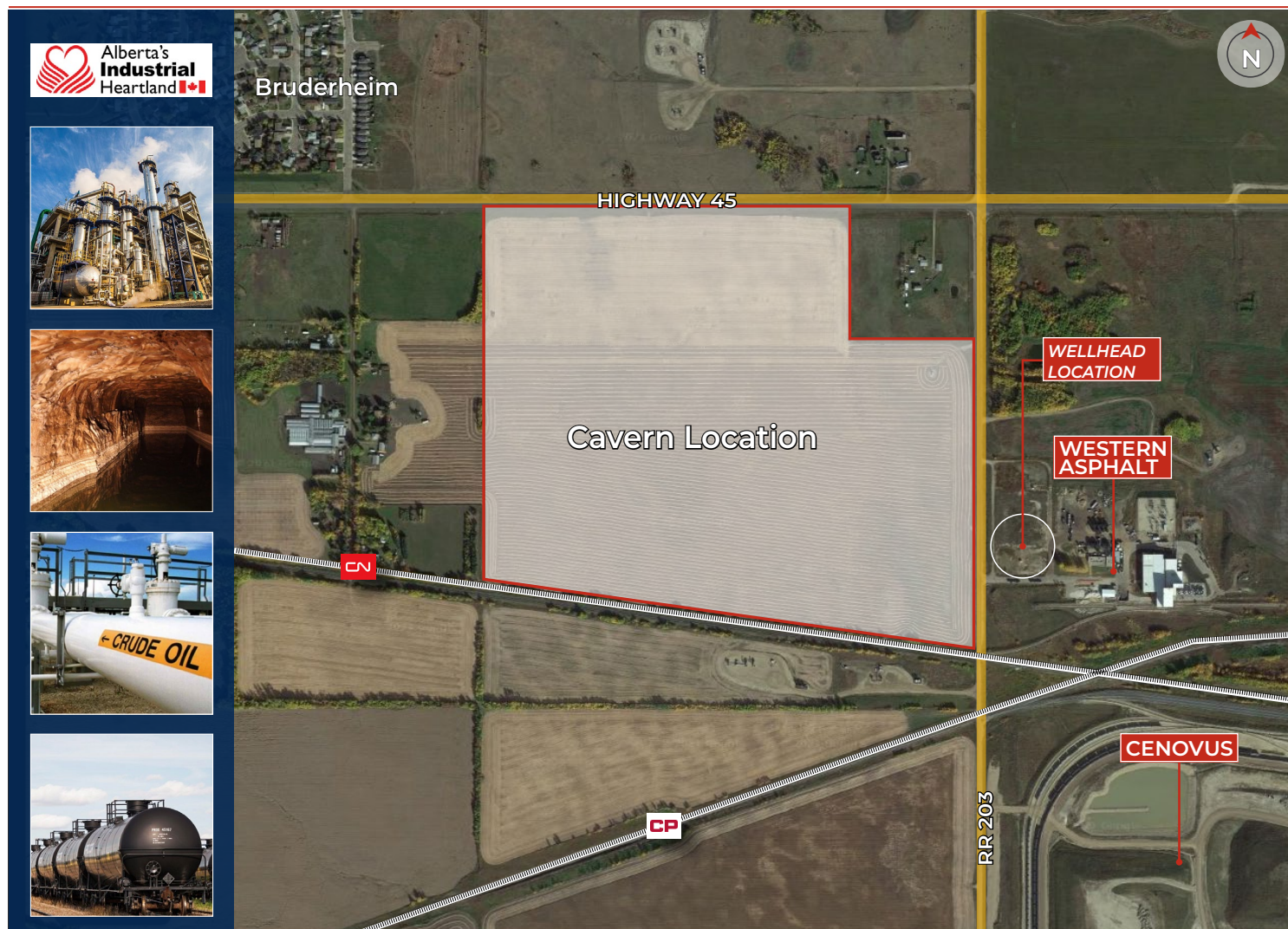
ROYAL PARK  
REALTY™

T 780.448.0800 F 780.426.3007  
#201, 9038 51 Ave NW Edmonton, AB T6E 5X4

royalparkrealty.com



# Overview | Cavern Asset Sale in Lamont County, Alberta



## Property Information & Financials

CAVERN LOCATION	Highway 45 & Range Road 203, Lamont County, Alberta
LEGAL DESCRIPTION	4; 20; 55; 33; NE
CAVERN SIZE	1.5 million barrels
SALE PRICE	<b>\$11,000,000.00</b>
NOTE	<i>Cavern assets means all Vendor's rights, titles and interest in the salt cavern. Wellhead location lease to be negotiated.</i>

## Salt Cavern Features

The subject asset provides an extremely rare opportunity. Salt cavern asset located minutes east of Bruderheim in Lamont County. The cavern has a 1.5 million barrel capacity. The cavern can be utilized for storage of oilfield waste & skim oil recovery, petroleum product storage or an outright sale.



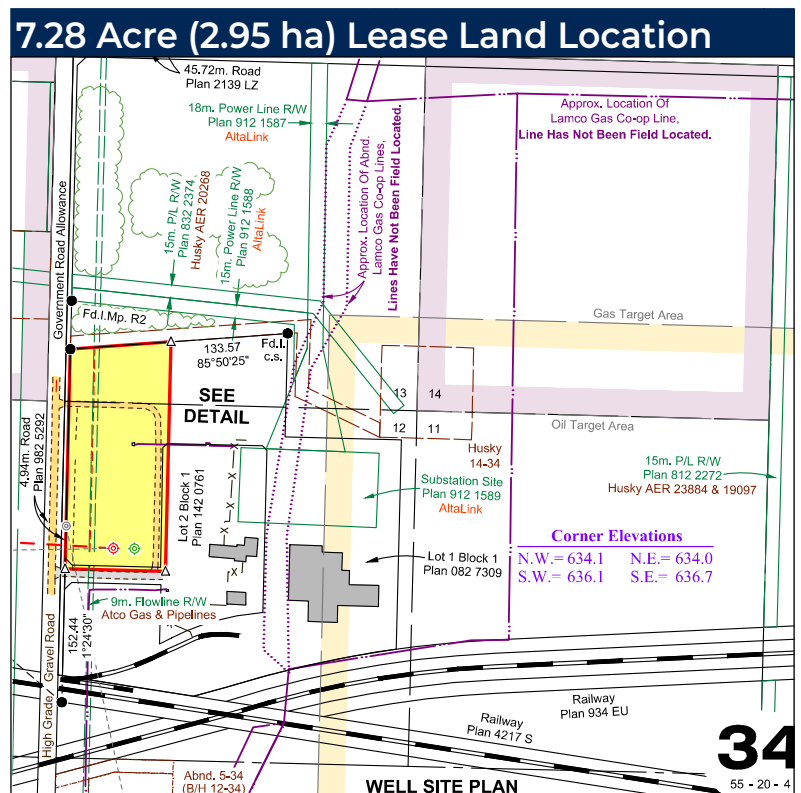
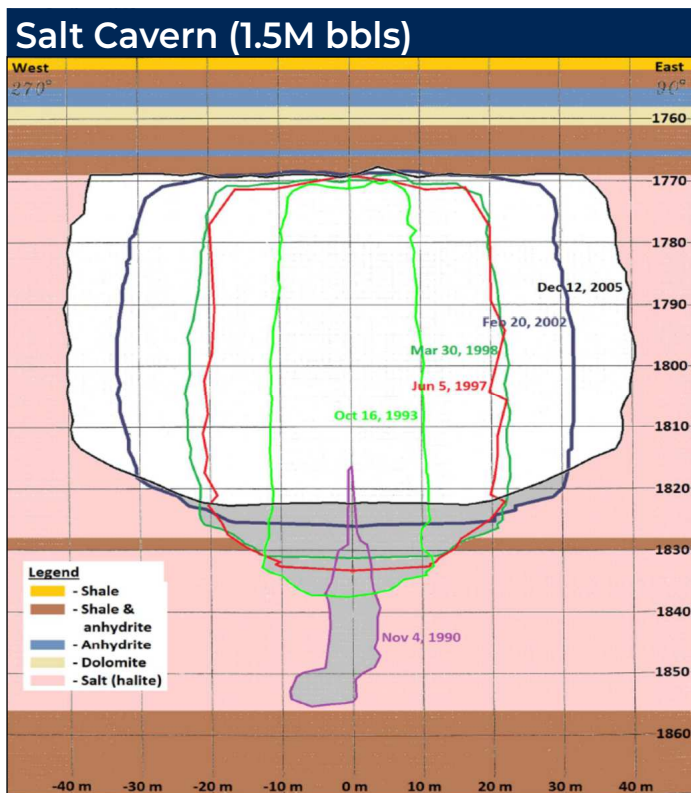
ROYAL PARK  
REALTY™

T 780.448.0800 F 780.426.3007  
#201, 9038 51 Ave NW Edmonton, AB T6E 5X4

[royalparkrealty.com](http://royalparkrealty.com)



## Cavern Information | Cavern Asset Sale in Lamont County, Alberta



ROYAL PARK  
REALTY™

**T 780.448.0800 F 780.426.3007**  
**#201, 9038 51 Ave NW Edmonton, AB T6E 5X4**

**royalparkrealty.com**

The information contained herein is believed to be correct, however does not form part of any future contract. The offering may be withdrawn at any time without notice or cause.



# Regional Map | Cavern Asset Sale in Lamont County, Alberta



Quality Based on **Results**, Not **Promises**.

## Contact Us For More Information



### JOEL WOLSKI

Director, Associate

**C** 780.904.5630

**T** 780.423.7599

joel@royalparkrealty.com



### SCOTT ENDRES

Partner, Broker

**C** 780.720.6541

**T** 780.423.7588

scott@royalparkrealty.com



**ROYAL PARK  
REALTY™**

**T 780.448.0800 F 780.426.3007**  
**#201, 9038 51 Ave NW Edmonton, AB T6E 5X4**

**royalparkrealty.com**