

NOW LEASING  
SUITE B-2

# BANGERTER RIDGE™

—BUSINESS PARK—

13702 SOUTH 200 WEST // DRAPER, UTAH



## PROPERTY FEATURES:

- **Available:** Total: 10,001 SF  
Office: ±800 SF  
Warehouse: ±9,201 SF
- **Lease Rate:** \$1.15 PSF, NNN Lease Rate
- **Availability:** 24'
- **Clear Height:** 1 ground level and 1 dock door
- **Loading:** 118' 8" to 180' 5"
- **Truck Court Sizes:** 1200 AMPS 277/480V, 3 Phase
- **Power:** ESFR
- **Fire Suppression:** 16 non-reserved common parking stalls
- **Parking:** Less than 1 minute (only 0.4 Miles)
- **Distance to I-15 Interchange:** Promote your company on Bangerter Hwy
- **Bangerter Frontage:**

FOR MORE  
INFORMATION  
PLEASE CONTACT

**Marcus Watkins**  
801-866-2519  
marcuswatkinsutah@gmail.com

**Matt Watkins**  
801-631-2916  
mattwatkins76@gmail.com

**equity**  
REAL ESTATE

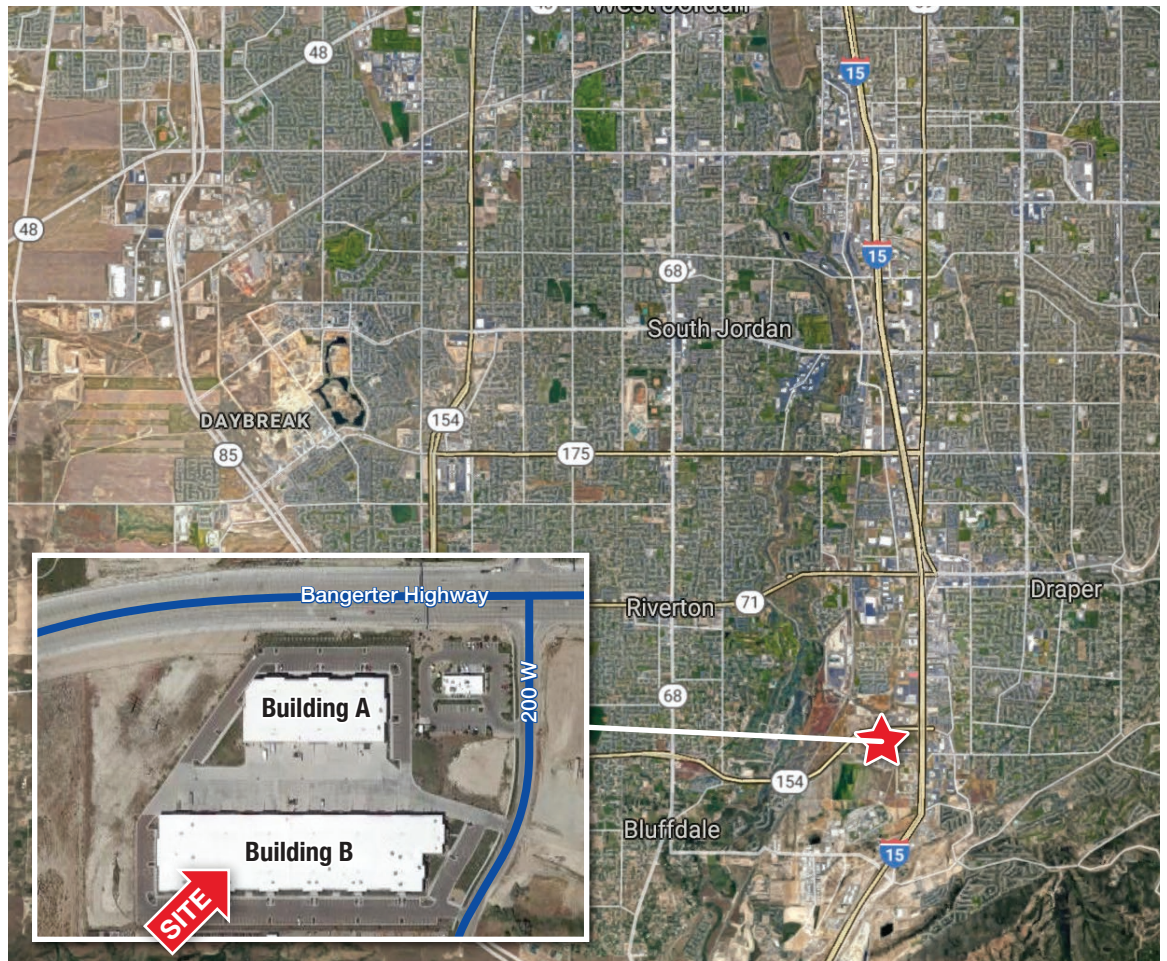
NOW LEASING  
SUITE B-2

# BANGERTER RIDGE™

—BUSINESS PARK—

13702 SOUTH 200 WEST // DRAPER, UTAH

## SITE MAP



## FLOOR PLAN: SUITE B-2

SUITE B-2 10,001 SF Total



Equity Real Estate | 321 E State St, American Fork, UT 84003

© 2018 Equity Real Estate. This information has been obtained from sources believed reliable. We have not verified it and make no guarantee, warranty or representation about it. Any projections, opinions, assumptions or estimates used are for example only and do not represent the current or future performance of the property. You and your advisors should conduct a careful, independent investigation of the property to determine to your satisfaction the suitability of the property for your needs.