



SAURAGE ROTENBERG™
COMMERCIAL REAL ESTATE

FOR LEASE

WOODDALE CENTER OFFICE COMPLEX

2032, 2034, 2036 WOODDALE BLVD, BATON ROUGE, LA 70806

220 - 2,500 SF



OFFERING SUMMARY

Lease Rate:	\$550.00 - 2,916.67/mo.
Available SF:	220 - 2,500 SF

PROPERTY HIGHLIGHTS

- Wooddale Center Office Complex
- Affordable Office Space Available with a Variety of Floor Plans
- 2032 Wooddale: 2,500 SF. Freshly Renovated; New Flooring, New Paint, New Fixtures and New Roof
- +/-1.66 Acre Lot
- 121' Frontage on Wooddale Blvd.
- Centrally Located, Established Area near the new Amazon Fulfillment Center corner of Airline Hwy. and Florida Blvd.
- Easy Access, Dual Access Points
- All Leases are Modified Gross
- Zoned M-2



CARMEN AUSTIN, MBA, CCIM, SIOR
Associate Broker & Retail Specialist
(D)225.930.6256 | (C)225.328.1778
carmen@sr-cre.com

SAURAGE ROTENBERG COMMERCIAL REAL ESTATE, LLC
5135 Bluebonnet Boulevard
Baton Rouge, LA 70809
225.766.0000 | sauragerotenberg.com

The information contained herein has either been given to us by property owners or is from sources deemed reliable and is believed to be correct, it is not in any way warranted or guaranteed by Saurage Rotenberg Commercial Real Estate. This information is submitted subject to errors, omissions, changes in price, rental or other conditions, withdrawal without notice, and to any special listing conditions imposed by the principals. Licensed in Louisiana & Mississippi.



SAURAGE ROTENBERG™
COMMERCIAL REAL ESTATE

FOR LEASE

WOODDALE CENTER OFFICE COMPLEX

2032, 2034, 2036 WOODDALE BLVD, BATON ROUGE, LA 70806

220 - 2,500 SF



AVAILABLE SPACES

SUITE	TENANT	SIZE (SF)	LEASE TYPE	LEASE RATE	DESCRIPTION
2032_ABCDE	Available	2,200 SF	Modified Gross	\$2,200 per month	Base Rent + Utilities
2032_A	Available	1,000 SF	Modified Gross	\$1,000 per month	Base Rent + \$200/mo. Utilities
2032_B	Available	220 SF	Modified Gross	\$550 per month	Base Rent includes Utilities
2032_C	Available	220 SF	Modified Gross	\$550 per month	Base Rent includes Utilities
2032_D	Available	220 SF	Modified Gross	\$550 per month	Base Rent includes Utilities
2032_E	Available	220 SF	Modified Gross	\$550 per month	Base Rent includes Utilities
2034	Available	2,500 SF	Modified Gross	\$2,917 per month	Base Rent + Utilities. Freshly Renovated; Brand New Flooring, Paint, Roof and Fixtures
2036_M	Available	550 SF	Modified Gross	\$800 per month	Base Rent includes Utilities
2036_N	Available	1,000 SF	Modified Gross	\$1,150 per month	Base Rent includes Utilities. 5 Offices, Breakroom, Conference Room and 2 Restrooms
2036_O	Available	550 SF	Modified Gross	\$800 per month	Base Rent includes Utilities
2036_P	Available	550 SF	Modified Gross	\$800 per month	Base Rent includes Utilities
2036_QRS	Available	1,176 SF	Modified Gross	\$1,200 per month	Base Rent includes Utilities

CARMEN AUSTIN, MBA, CCIM, SIOR
Associate Broker & Retail Specialist
(D)225.930.6256 | (C)225.328.1778
carmen@sr-cre.com

SAURAGE ROTENBERG COMMERCIAL REAL ESTATE, LLC
5135 Bluebonnet Boulevard
Baton Rouge, LA 70809
225.766.0000 | sauragerotenberg.com

The information contained herein has either been given to us by property owners or is from sources deemed reliable and is believed to be correct, it is not in any way warranted or guaranteed by Saurage Rotenberg Commercial Real Estate. This information is submitted subject to errors, omissions, changes in price, rental or other conditions, withdrawal without notice, and to any special listing conditions imposed by the principals. Licensed in Louisiana & Mississippi.



SAURAGE ROTENBERG™
COMMERCIAL REAL ESTATE

OFFICE FOR LEASE

WOODDALE CENTER OFFICE COMPLEX

2032, 2034, 2036 WOODDALE BLVD, BATON ROUGE, LA 70806

220 - 2,500 SF



Wooddale Blvd., 121' Frontage



Scobell Dr., 60' Frontage

CARMEN AUSTIN, MBA, CCIM, SIOR
Associate Broker & Retail Specialist
(D)225.930.6256 | (C)225.328.1778
carmen@sr-cre.com

SAURAGE ROTENBERG COMMERCIAL REAL ESTATE, LLC
5135 Bluebonnet Boulevard
Baton Rouge, LA 70809
225.766.0000 | sauragerotenberg.com

The information contained herein has either been given to us by property owners or is from sources deemed reliable and is believed to be correct, it is not in any way warranted or guaranteed by Saurage Rotenberg Commercial Real Estate. This information is submitted subject to errors, omissions, changes in price, rental or other conditions, withdrawal without notice, and to any special listing conditions imposed by the principals. Licensed in Louisiana & Mississippi.



SAURAGE ROTENBERG™
COMMERCIAL REAL ESTATE

OFFICE FOR LEASE

WOODDALE CENTER OFFICE COMPLEX

2032, 2034, 2036 WOODDALE BLVD, BATON ROUGE, LA 70806



2032 Wooddale Suite A



2032 Wooddale Suite A



2032 Wooddale Suite A



2032 Wooddale Suite A



2032 Wooddale Suite A



2032 Wooddale Suite A

CARMEN AUSTIN, MBA, CCIM, SIOR
Associate Broker & Retail Specialist
(D)225.930.6256 | (C)225.328.1778
carmen@sr-cre.com

SAURAGE ROTENBERG COMMERCIAL REAL ESTATE, LLC
5135 Bluebonnet Boulevard
Baton Rouge, LA 70809
225.766.0000 | sauragerotenberg.com

The information contained herein has either been given to us by property owners or is from sources deemed reliable and is believed to be correct, it is not in any way warranted or guaranteed by Saurage Rotenberg Commercial Real Estate. This information is submitted subject to errors, omissions, changes in price, rental or other conditions, withdrawal without notice, and to any special listing conditions imposed by the principals. Licensed in Louisiana & Mississippi.



SAURAGE ROTENBERG™
COMMERCIAL REAL ESTATE

OFFICE FOR LEASE WOODDALE CENTER OFFICE COMPLEX

2032, 2034, 2036 WOODDALE BLVD, BATON ROUGE, LA 70806

220 - 2,500 SF



2032 Wooddale Blvd., Suite E



2032 Wooddale Blvd., Common Area



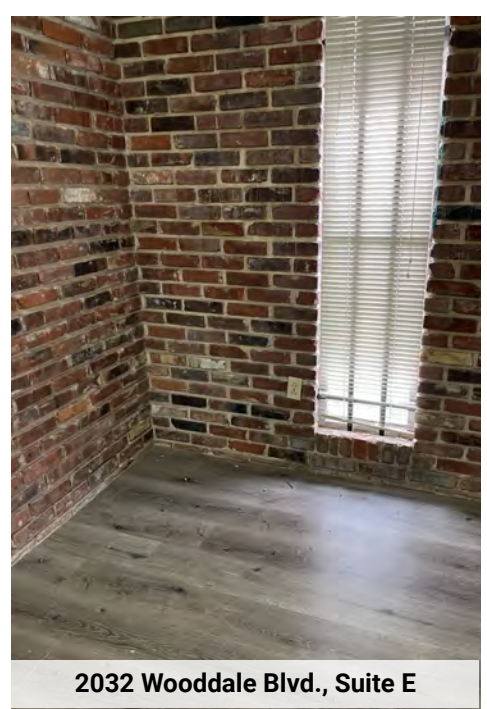
2032 Wooddale Blvd., Common Area



2032 Wooddale Blvd., Suite E



2032 Wooddale Blvd., Suite E



2032 Wooddale Blvd., Suite E

CARMEN AUSTIN, MBA, CCIM, SIOR
Associate Broker & Retail Specialist
(D)225.930.6256 | (C)225.328.1778
carmen@sr-cre.com

SAURAGE ROTENBERG COMMERCIAL REAL ESTATE, LLC
5135 Bluebonnet Boulevard
Baton Rouge, LA 70809
225.766.0000 | sauragerotenberg.com

The information contained herein has either been given to us by property owners or is from sources deemed reliable and is believed to be correct, it is not in any way warranted or guaranteed by Saurage Rotenberg Commercial Real Estate. This information is submitted subject to errors, omissions, changes in price, rental or other conditions, withdrawal without notice, and to any special listing conditions imposed by the principals. Licensed in Louisiana & Mississippi.



SAURAGE ROTENBERG™
COMMERCIAL REAL ESTATE

OFFICE FOR LEASE

WOODDALE CENTER OFFICE COMPLEX

2032, 2034, 2036 WOODDALE BLVD, BATON ROUGE, LA 70806

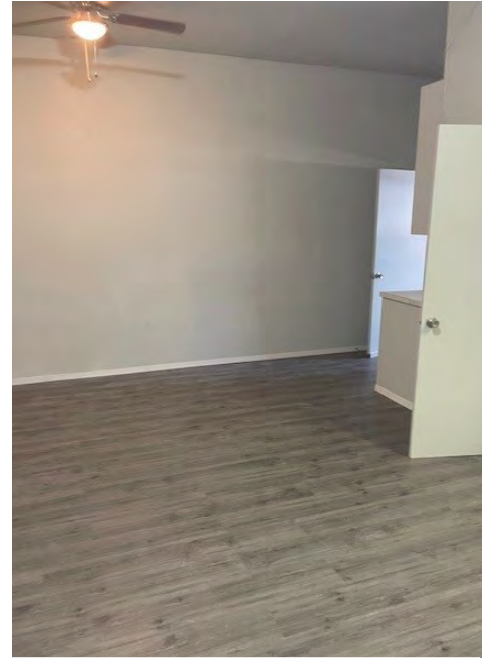
220 - 2,500 SF



2034 Wooddale Blvd.



2034 Wooddale Blvd.



2034 Wooddale Blvd.



2034 Wooddale Blvd.



2034 Wooddale Blvd.



2034 Wooddale Blvd.

CARMEN AUSTIN, MBA, CCIM, SIOR
Associate Broker & Retail Specialist
(D)225.930.6256 | (C)225.328.1778
carmen@sr-cre.com

SAURAGE ROTENBERG COMMERCIAL REAL ESTATE, LLC
5135 Bluebonnet Boulevard
Baton Rouge, LA 70809
225.766.0000 | sauragerotenberg.com

The information contained herein has either been given to us by property owners or is from sources deemed reliable and is believed to be correct, it is not in any way warranted or guaranteed by Saurage Rotenberg Commercial Real Estate. This information is submitted subject to errors, omissions, changes in price, rental or other conditions, withdrawal without notice, and to any special listing conditions imposed by the principals. Licensed in Louisiana & Mississippi.



SAURAGE ROTENBERG™
COMMERCIAL REAL ESTATE

WOODDALE CENTER OFFICE COMPLEX

2032, 2034, 2036 WOODDALE BLVD, BATON ROUGE, LA 70806

OFFICE FOR LEASE

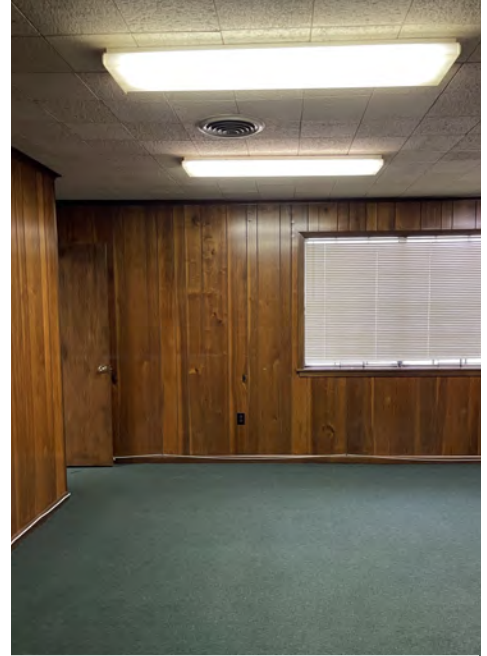
220 - 2,500 SF



2036 Wooddale Blvd., Suite N



2036 Wooddale Blvd., Suite N



2036 Wooddale Blvd., Suite N



2036 Wooddale Blvd., Suite N



2036 Wooddale Blvd., Suite N



2036 Wooddale Blvd., Suite N

CARMEN AUSTIN, MBA, CCIM, SIOR
Associate Broker & Retail Specialist
(D)225.930.6256 | (C)225.328.1778
carmen@sr-cre.com

SAURAGE ROTENBERG COMMERCIAL REAL ESTATE, LLC
5135 Bluebonnet Boulevard
Baton Rouge, LA 70809
225.766.0000 | sauragerotenberg.com

The information contained herein has either been given to us by property owners or is from sources deemed reliable and is believed to be correct, it is not in any way warranted or guaranteed by Saurage Rotenberg Commercial Real Estate. This information is submitted subject to errors, omissions, changes in price, rental or other conditions, withdrawal without notice, and to any special listing conditions imposed by the principals. Licensed in Louisiana & Mississippi.



SAURAGE ROTENBERG™
COMMERCIAL REAL ESTATE

OFFICE FOR LEASE WOODDALE CENTER OFFICE COMPLEX

2032, 2034, 2036 WOODDALE BLVD, BATON ROUGE, LA 70806

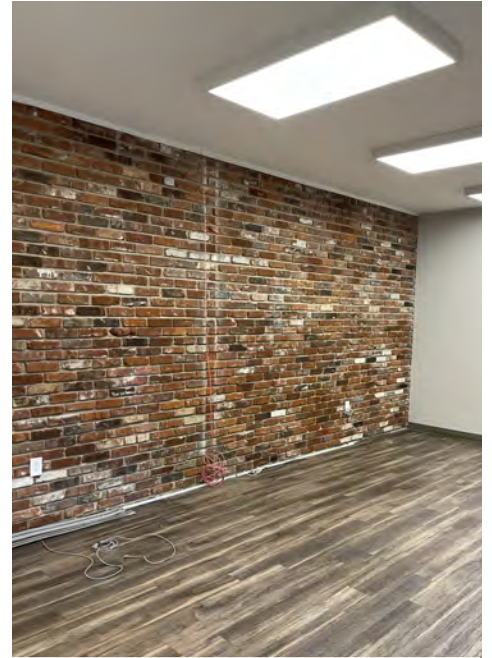
220 - 2,500 SF



7185 Scobell Dr.



7185 Scobell Dr., Suite B



7185 Scobell Dr., Suite B



7185 Scobell Dr., Suite B



7185 Scobell Dr., Suite B



7185 Scobell Dr., Suite B

CARMEN AUSTIN, MBA, CCIM, SIOR
Associate Broker & Retail Specialist
(D)225.930.6256 | (C)225.328.1778
carmen@sr-cre.com

SAURAGE ROTENBERG COMMERCIAL REAL ESTATE, LLC
5135 Bluebonnet Boulevard
Baton Rouge, LA 70809
225.766.0000 | sauragerotenberg.com

The information contained herein has either been given to us by property owners or is from sources deemed reliable and is believed to be correct, it is not in any way warranted or guaranteed by Saurage Rotenberg Commercial Real Estate. This information is submitted subject to errors, omissions, changes in price, rental or other conditions, withdrawal without notice, and to any special listing conditions imposed by the principals. Licensed in Louisiana & Mississippi.



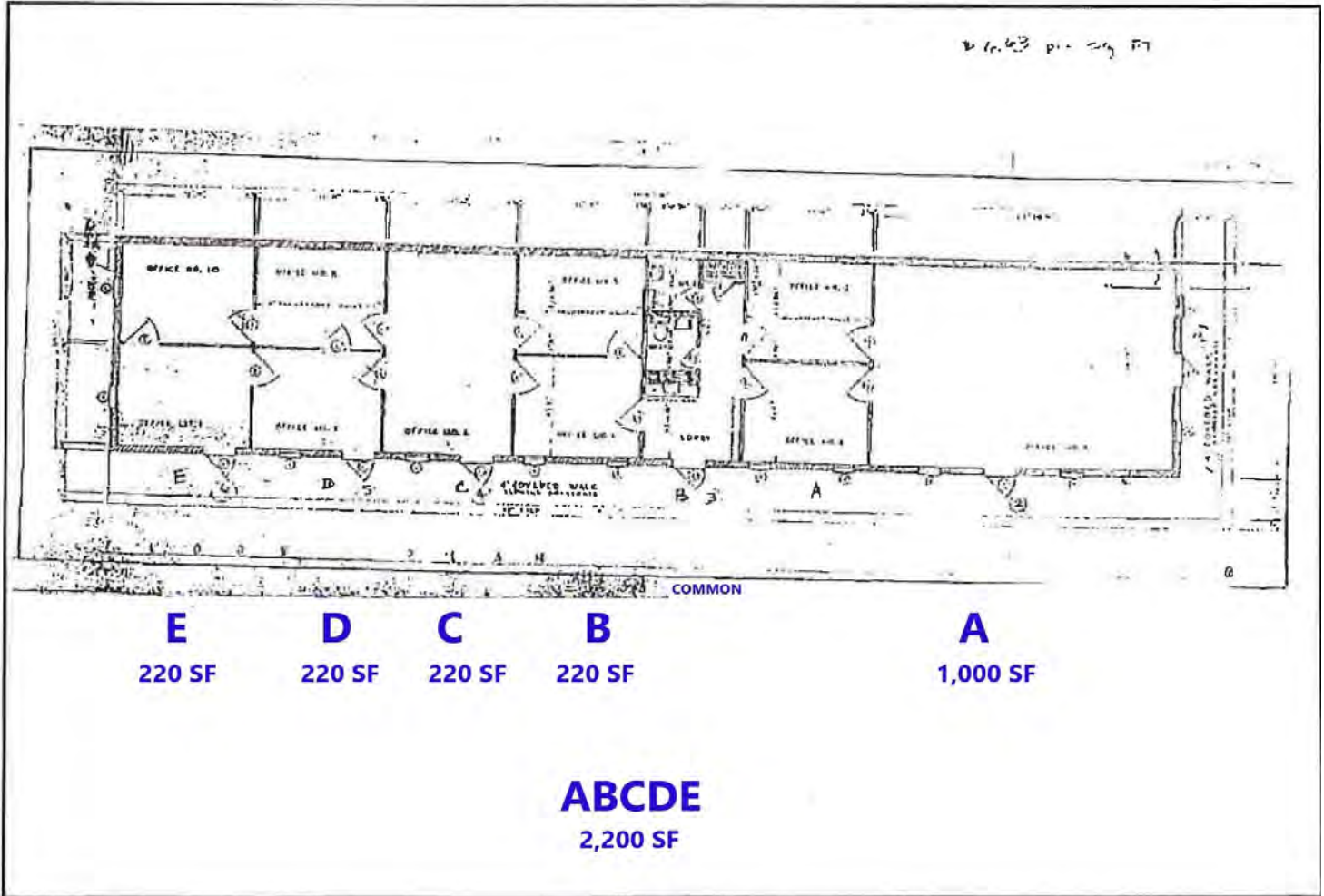
SAURAGE ROTENBERG™
COMMERCIAL REAL ESTATE

FLOOR PLAN: A, B, C, D, E

WOODDALE CENTER OFFICE COMPLEX

2032, 2034, 2036 WOODDALE BLVD, BATON ROUGE, LA 70806

220 - 2,500 SF



FLOOR PLAN 2032 WOODDALE BLVD.

CARMEN AUSTIN, MBA, CCIM, SIOR
Associate Broker & Retail Specialist
(D)225.930.6256 | (C)225.328.1778
carmen@sr-cre.com

SAURAGE ROTENBERG COMMERCIAL REAL ESTATE, LLC
5135 Bluebonnet Boulevard
Baton Rouge, LA 70809
225.766.0000 | sauragerotenberg.com

The information contained herein has either been given to us by property owners or is from sources deemed reliable and is believed to be correct, it is not in any way warranted or guaranteed by Saurage Rotenberg Commercial Real Estate. This information is submitted subject to errors, omissions, changes in price, rental or other conditions, withdrawal without notice, and to any special listing conditions imposed by the principals. Licensed in Louisiana & Mississippi.



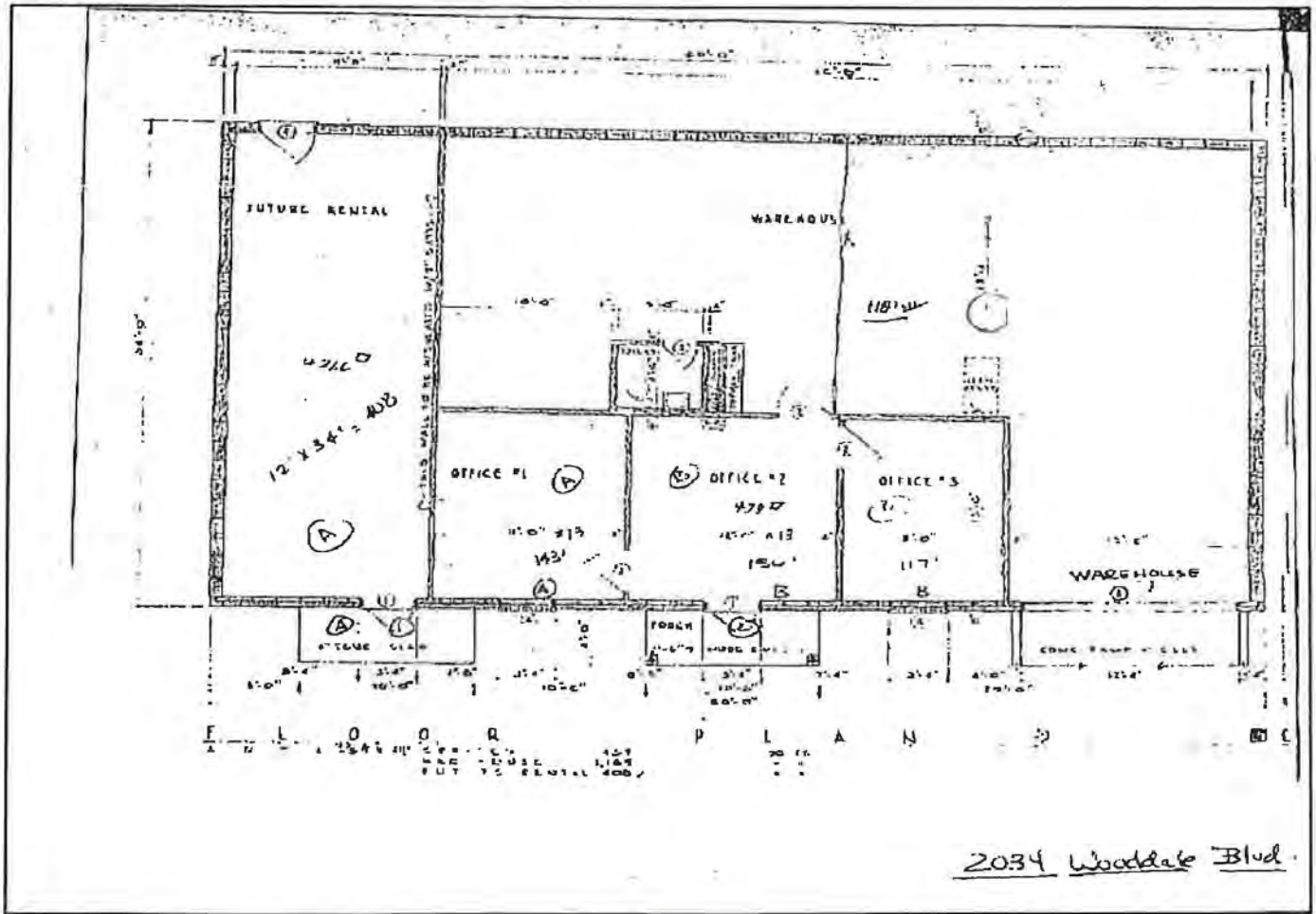
SAURAGE ROTENBERG™
COMMERCIAL REAL ESTATE

FLOOR PLAN: 2034

WOODDALE CENTER OFFICE COMPLEX

2032, 2034, 2036 WOODDALE BLVD, BATON ROUGE, LA 70806

220 - 2,500 SF



2034 WOODDALE BLVD. 2,500 SF

CARMEN AUSTIN, MBA, CCIM, SIOR
Associate Broker & Retail Specialist
(D)225.930.6256 | (C)225.328.1778
carmen@sr-cre.com

SAURAGE ROTENBERG COMMERCIAL REAL ESTATE, LLC
5135 Bluebonnet Boulevard
Baton Rouge, LA 70809
225.766.0000 | sauragerotenberg.com

The information contained herein has either been given to us by property owners or is from sources deemed reliable and is believed to be correct, it is not in any way warranted or guaranteed by Saurage Rotenberg Commercial Real Estate. This information is submitted subject to errors, omissions, changes in price, rental or other conditions, withdrawal without notice, and to any special listing conditions imposed by the principals. Licensed in Louisiana & Mississippi.



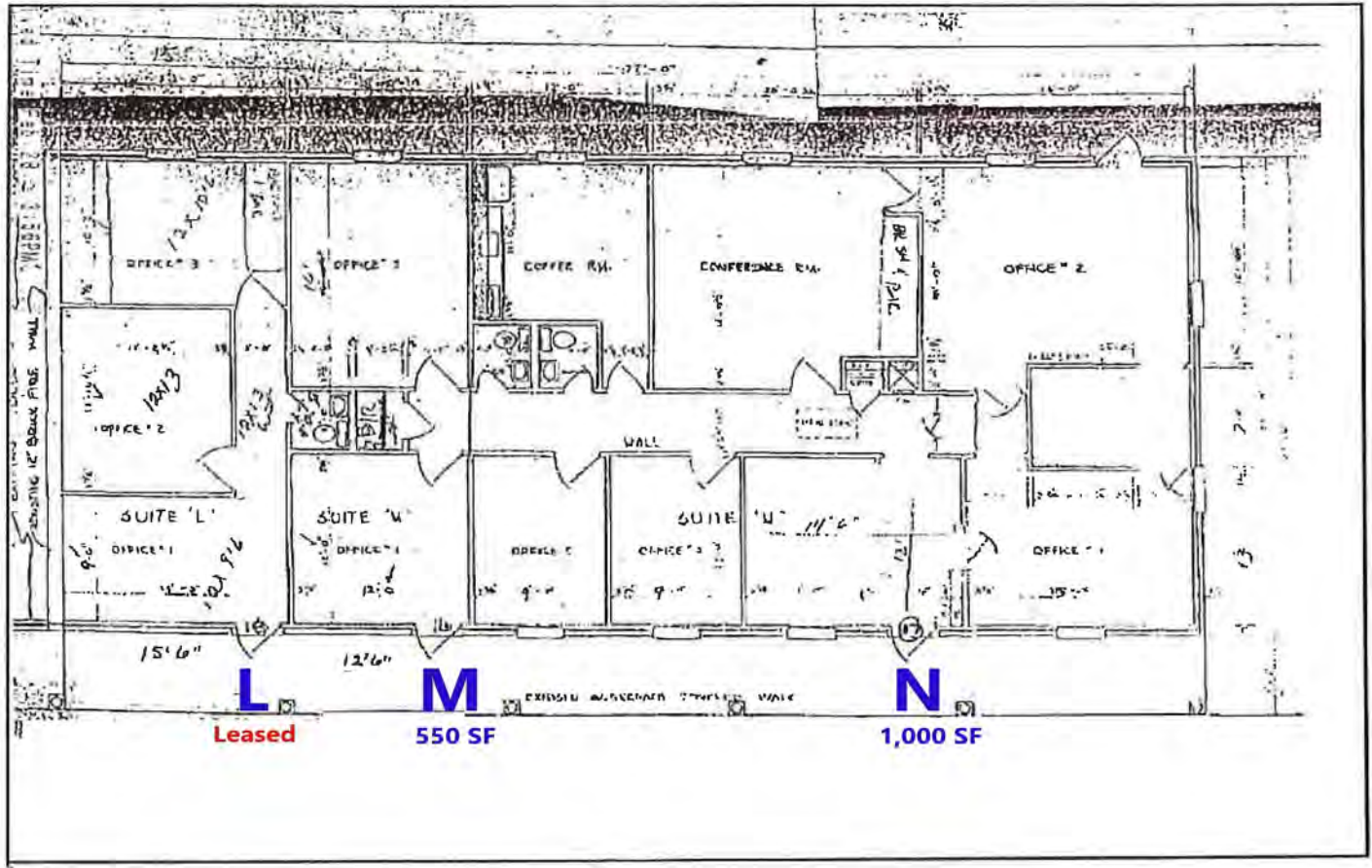
SAURAGE ROTENBERG
COMMERCIAL REAL ESTATE

FLOOR PLAN: L, M, N

WOODDALE CENTER OFFICE COMPLEX

2032, 2034, 2036 WOODDALE BLVD, BATON ROUGE, LA 70806

220 - 2,500 SF



2036 WOODDALE BLVD.

CARMEN AUSTIN, MBA, CCIM, SIOR
Associate Broker & Retail Specialist
(D)225.930.6256 | (C)225.328.1778
carmen@sr-cre.com

SAURAGE ROTENBERG COMMERCIAL REAL ESTATE, LLC
5135 Bluebonnet Boulevard
Baton Rouge, LA 70809
225.766.0000 | sauragerotenberg.com

The information contained herein has either been given to us by property owners or is from sources deemed reliable and is believed to be correct, it is not in any way warranted or guaranteed by Saurage Rotenberg Commercial Real Estate. This information is submitted subject to errors, omissions, changes in price, rental or other conditions, withdrawal without notice, and to any special listing conditions imposed by the principals. Licensed in Louisiana & Mississippi.



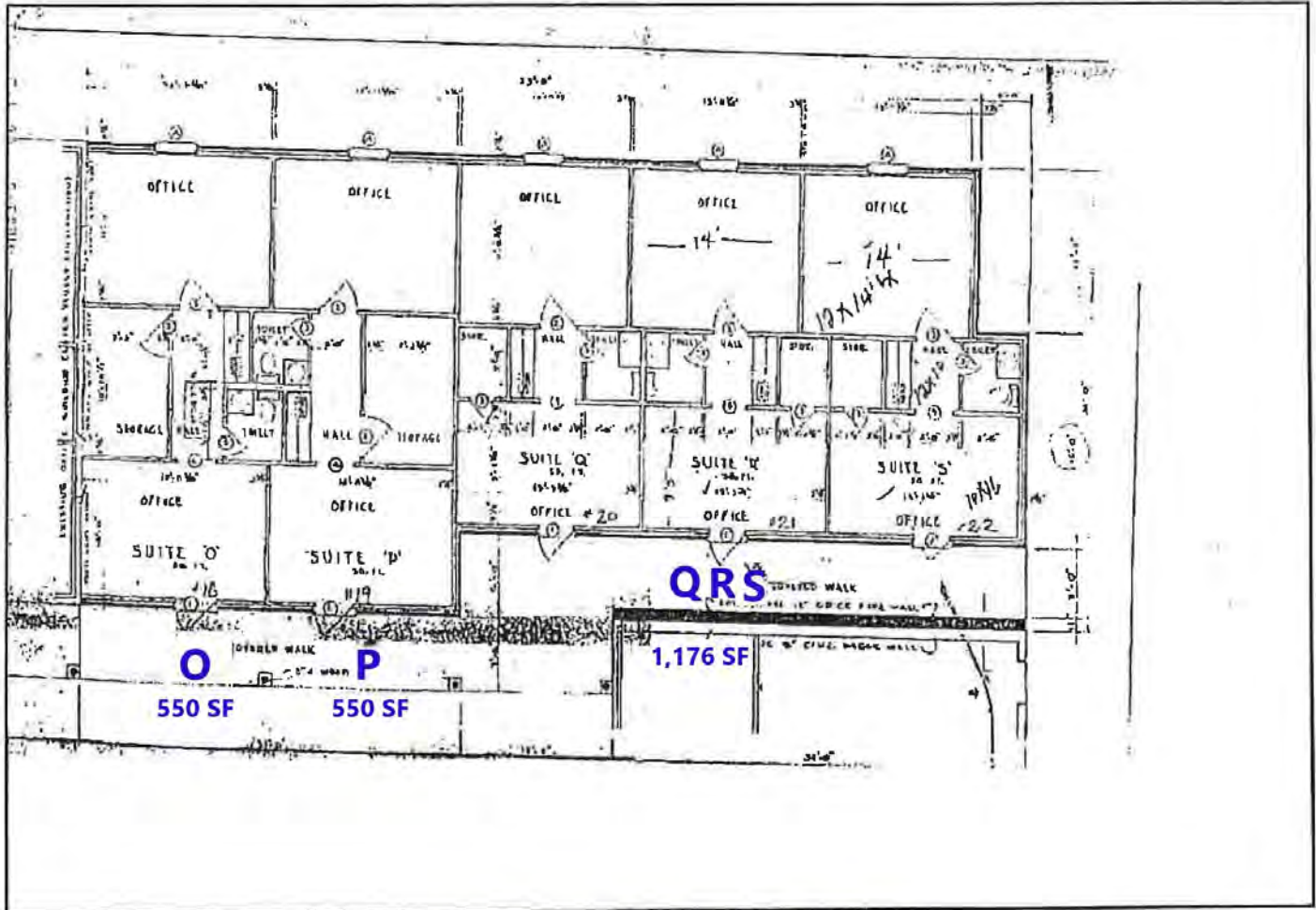
SAURAGE ROTENBERG™
COMMERCIAL REAL ESTATE

FLOOR PLAN: O, P, QRS

WOODDALE CENTER OFFICE COMPLEX

2032, 2034, 2036 WOODDALE BLVD, BATON ROUGE, LA 70806

220 - 2,500 SF



2036 WOODDALE BLVD.

CARMEN AUSTIN, MBA, CCIM, SIOR
Associate Broker & Retail Specialist
(D)225.930.6256 | (C)225.328.1778
carmen@sr-cre.com

SAURAGE ROTENBERG COMMERCIAL REAL ESTATE, LLC
5135 Bluebonnet Boulevard
Baton Rouge, LA 70809
225.766.0000 | sauragerotenberg.com

The information contained herein has either been given to us by property owners or is from sources deemed reliable and is believed to be correct, it is not in any way warranted or guaranteed by Saurage Rotenberg Commercial Real Estate. This information is submitted subject to errors, omissions, changes in price, rental or other conditions, withdrawal without notice, and to any special listing conditions imposed by the principals. Licensed in Louisiana & Mississippi.



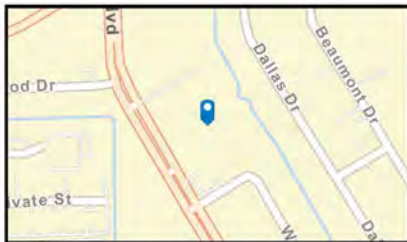
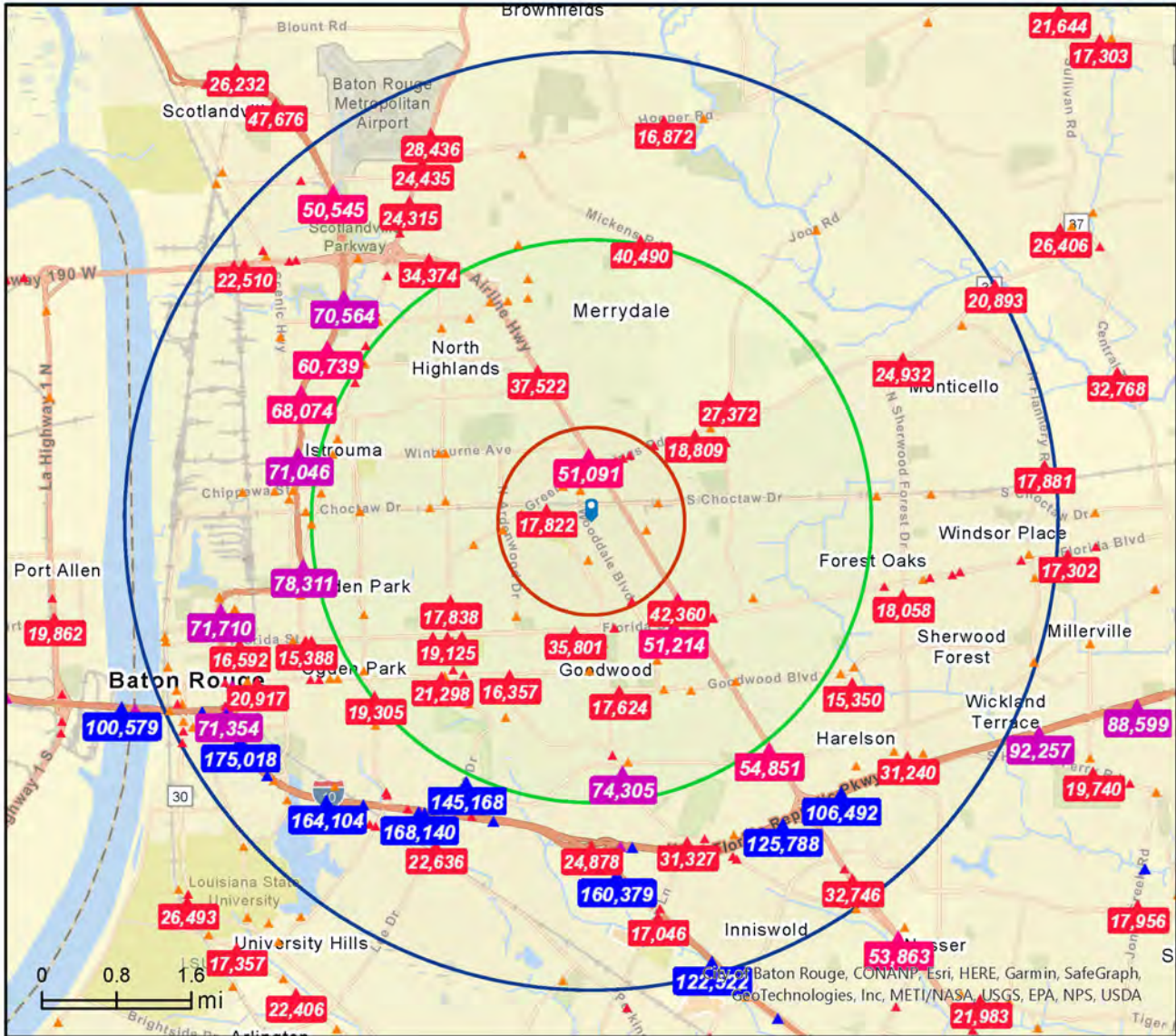
SAURAGE ROTENBERG™
COMMERCIAL REAL ESTATE

TRAFFIC COUNT MAP

WOODDALE CENTER OFFICE COMPLEX

2032, 2034, 2036 WOODDALE BLVD, BATON ROUGE, LA 70806

220 - 2,500 SF



- Average Daily Traffic Volume**
- ▲ Up to 6,000 vehicles per day
 - ▲ 6,001 - 15,000
 - ▲ 15,001 - 30,000
 - ▲ 30,001 - 50,000
 - ▲ 50,001 - 100,000
 - ▲ More than 100,000 per day



Source: ©2022 Kalibrate Technologies (Q1 2022).

CARMEN AUSTIN, MBA, CCIM, SIOR
Associate Broker & Retail Specialist
(D)225.930.6256 | (C)225.328.1778
carmen@sr-cre.com

SAURAGE ROTENBERG COMMERCIAL REAL ESTATE, LLC
5135 Bluebonnet Boulevard
Baton Rouge, LA 70809
225.766.0000 | sauragerotenberg.com

The information contained herein has either been given to us by property owners or is from sources deemed reliable and is believed to be correct, it is not in any way warranted or guaranteed by Saurage Rotenberg Commercial Real Estate. This information is submitted subject to errors, omissions, changes in price, rental or other conditions, withdrawal without notice, and to any special listing conditions imposed by the principals. Licensed in Louisiana & Mississippi.



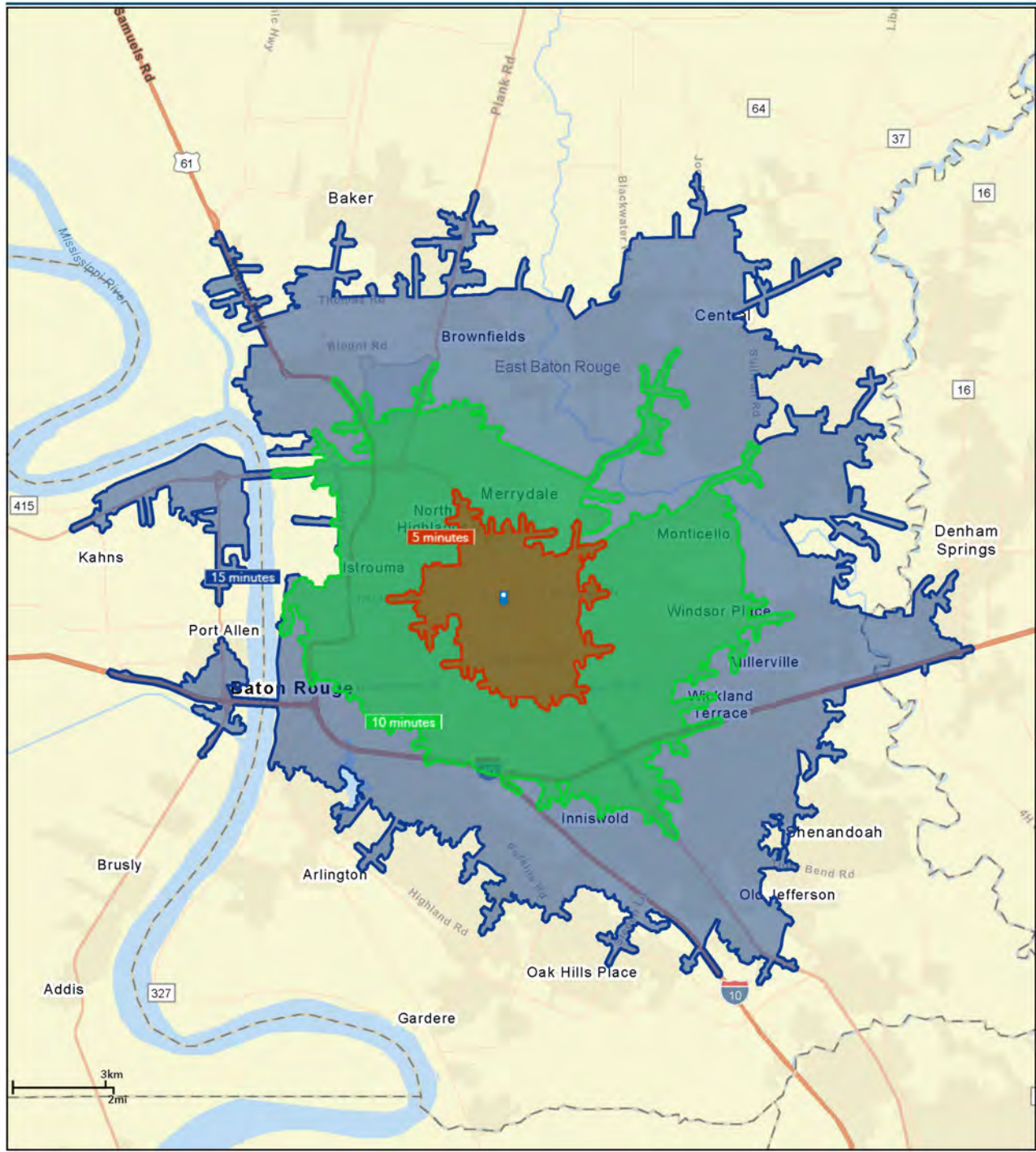
SAURAGE ROTENBERG™
COMMERCIAL REAL ESTATE

DRIVE TIME MAP: 5, 10, 15 MINUTES

WOODDALE CENTER OFFICE COMPLEX

2032, 2034, 2036 WOODDALE BLVD, BATON ROUGE, LA 70806

220 - 2,500 SF



CARMEN AUSTIN, MBA, CCIM, SIOR
Associate Broker & Retail Specialist
(D)225.930.6256 | (C)225.328.1778
carmen@sr-cre.com

SAURAGE ROTENBERG COMMERCIAL REAL ESTATE, LLC
5135 Bluebonnet Boulevard
Baton Rouge, LA 70809
225.766.0000 | sauragerotenberg.com

The information contained herein has either been given to us by property owners or is from sources deemed reliable and is believed to be correct, it is not in any way warranted or guaranteed by Saurage Rotenberg Commercial Real Estate. This information is submitted subject to errors, omissions, changes in price, rental or other conditions, withdrawal without notice, and to any special listing conditions imposed by the principals. Licensed in Louisiana & Mississippi.