

# 9155 Harrison Park Ct

Indianapolis, IN 46216

10,286 SF on 1.21 Acres

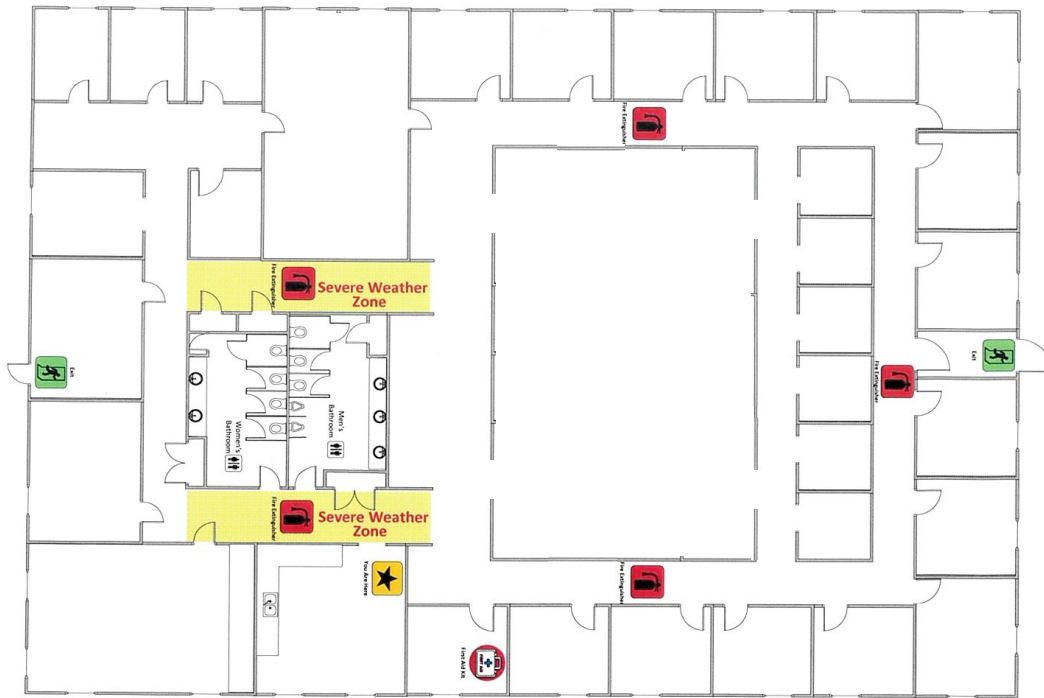


## PROPERTY HIGHLIGHTS

- 1.21 Acres
- 42 parking spots
- Year Built: 2000
- Zoned DP - Planned Unit Development
- Taxes: \$31,886.60/year
- Sale Price: Contact Broker

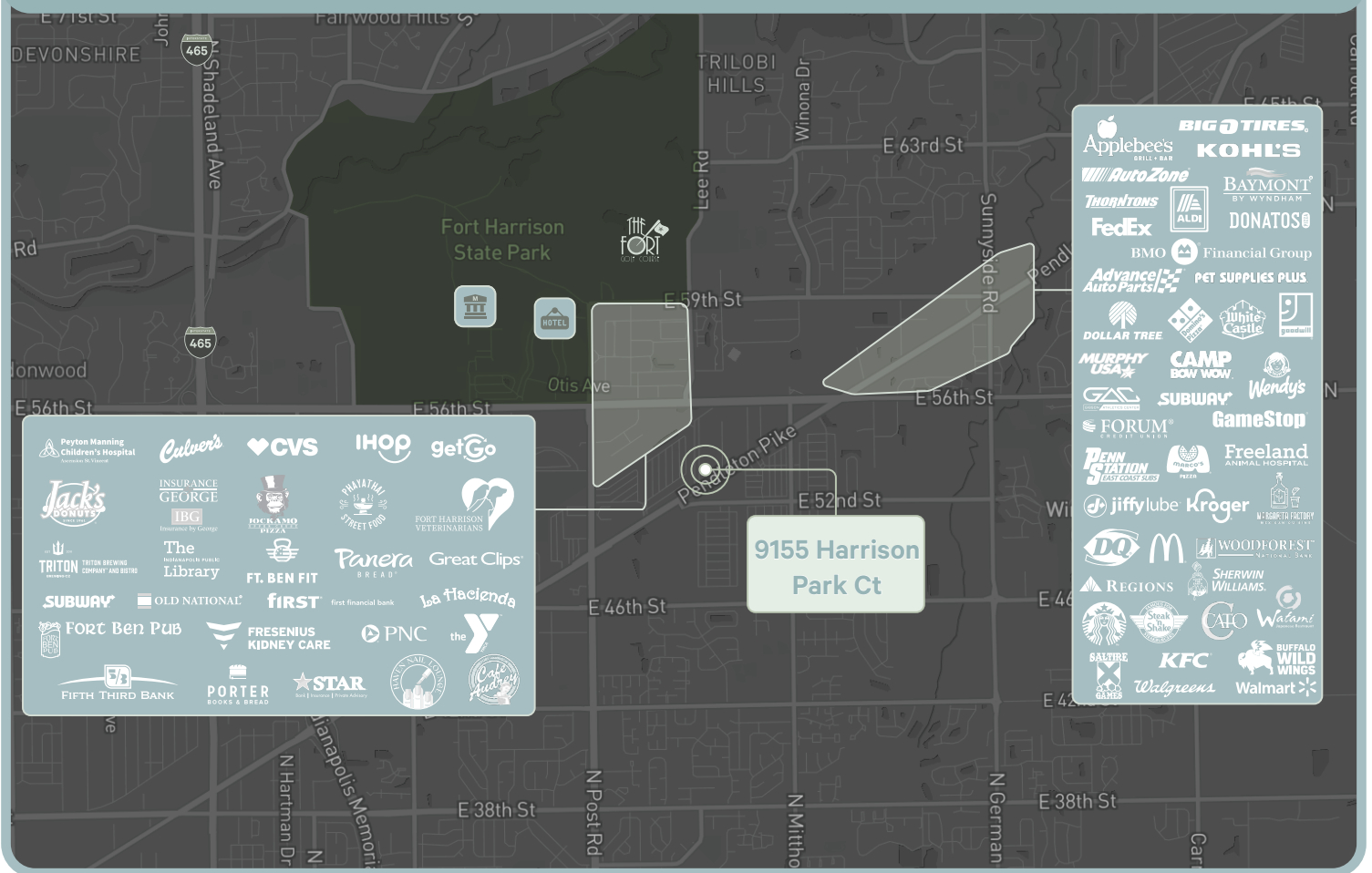


## FLOOR PLAN





PROPERTY LOCATION



Contact Us

**Kyle Powell**  
First Vice President  
+1 317 269 1064  
kyle.powell@cbre.com

**Kevin Broderick**  
First Vice President  
+1 317 340 4872  
kevin.broderick2@cbre.com

© 2026 CBRE, Inc. All rights reserved. This information has been obtained from sources believed reliable, but has not been verified for accuracy or completeness. You should conduct a careful, independent investigation of the property and verify all information. Any reliance on this information is solely at your own risk. CBRE and the CBRE logo are service marks of CBRE, Inc. All other marks displayed on this document are the property of their respective owners, and the use of such logos does not imply any affiliation with or endorsement of CBRE. Photos herein are the property of their respective owners. Use of these images without the express written consent of the owner is prohibited.