

OFFICE PROPERTY // FOR LEASE

ATTRACTIVE EXECUTIVE OFFICE SUITES IN DOWNTOWN NORTHVILLE

115 NORTH CENTER STREET
NORTHVILLE, MI 48167



- 130 SF & 205 SF executive office suites
- Beautiful historic building with exposed brick
- Convenient, accessible entrances
- Cooperative marketing effort via the Downtown Development Authority
- Abundant natural light



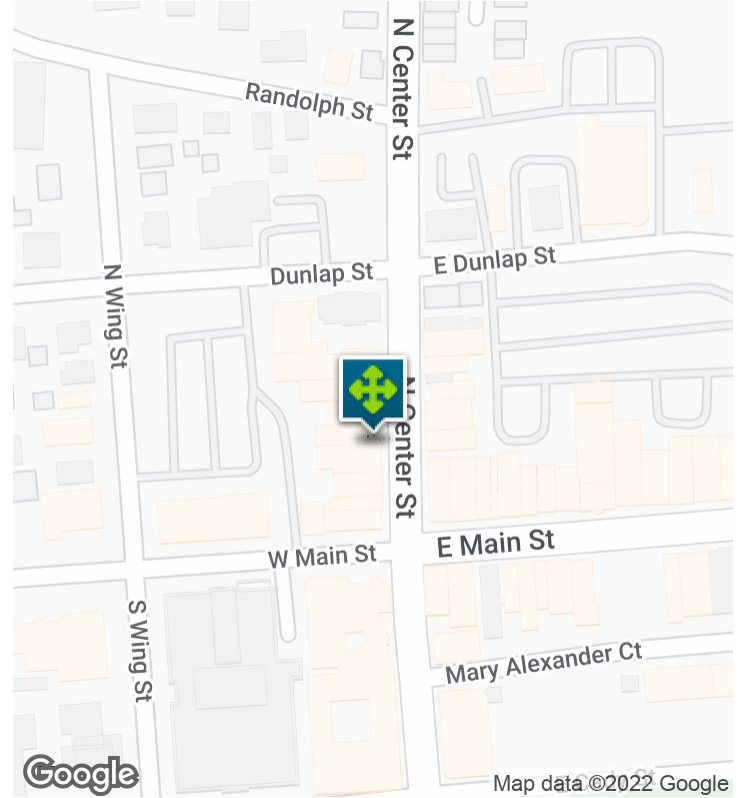
P.A. COMMERCIAL
Corporate & Investment Real Estate

26555 Evergreen Road, Suite 1500
Southfield, MI 48076

248.358.0100

paccommercial.com

EXECUTIVE SUMMARY



OFFERING SUMMARY

Lease Rate:	\$635.00 - 865.00 per month (Full Service)
Building Size:	13,600 SF
Available SF:	130 - 205 SF
Lot Size:	0.2 Acres
Year Built:	1940
Zoning:	CBD
Market:	Detroit
Submarket:	Southern I-275 Corridor
Traffic Count:	8,093

PROPERTY OVERVIEW

A charming historic building with exposed brick in Downtown Northville currently has two executive suites for lease. The suites have access to a shared conference room and kitchen. The building can be entered from the Center Street side or from the rear where there is more than ample parking, including 5 reserved spaces for the building.

LOCATION OVERVIEW

Newly updated offices in a historic building in the heart of downtown Northville. Conveniently located a 1/2 block north of Main & Center Streets.

PROPERTY HIGHLIGHTS

- 130 SF & 205 SF executive office suites
- Beautiful historic building with exposed brick
- Convenient, accessible entrances
- Cooperative marketing effort via the Downtown Development Authority
- Abundant natural light

115 NORTH CENTER STREET, NORTHVILLE, MI 48167 // FOR LEASE

LEASE SPACES



LEASE INFORMATION

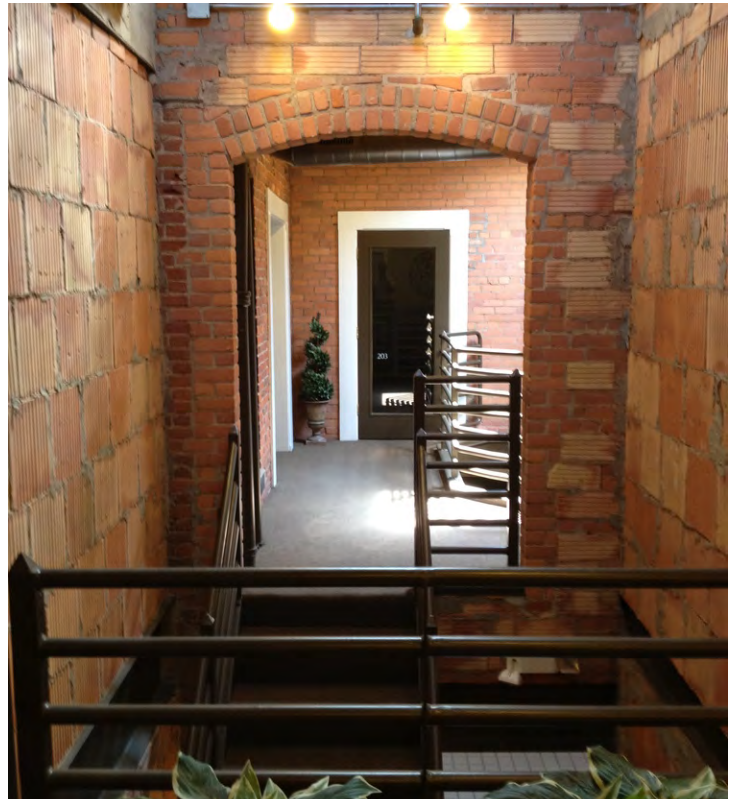
Lease Type:	Full Service	Lease Term:	Negotiable
Total Space:	130 - 205 SF	Lease Rate:	\$635.00 - \$865.00 per month

AVAILABLE SPACES

SUITE	TENANT	SIZE (SF)	LEASE TYPE	LEASE RATE	DESCRIPTION
115 N Center St, Suite 4	Available	205 SF	Full Service	\$865 per month	-
115 N Center St, Suite 5	Available	130 SF	Full Service	\$635 per month	-

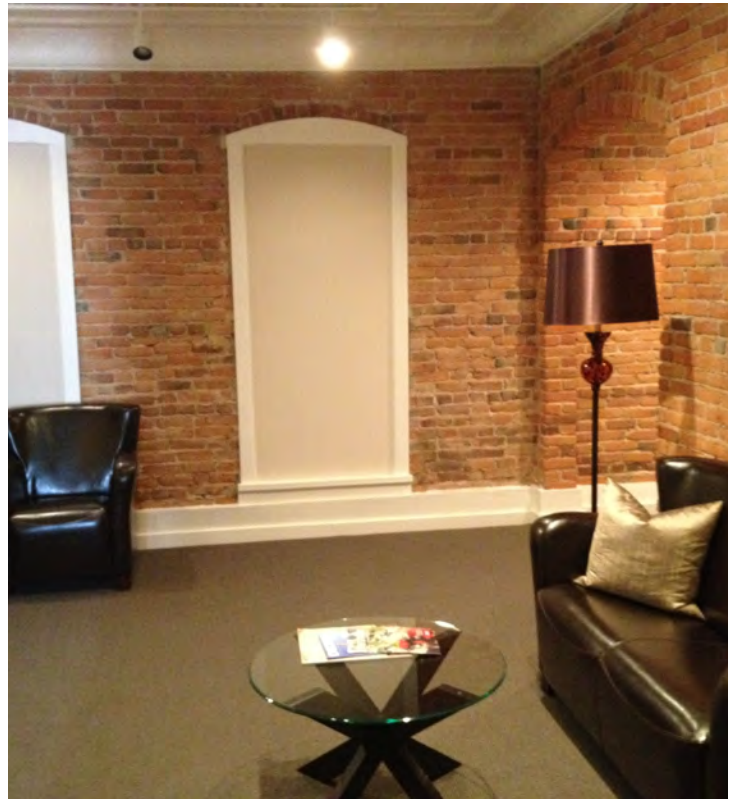
115 NORTH CENTER STREET, NORTHVILLE, MI 48167 // FOR LEASE

ADDITIONAL PHOTOS



115 NORTH CENTER STREET, NORTHVILLE, MI 48167 // FOR LEASE

ADDITIONAL PHOTOS



P.A. COMMERCIAL
Corporate & Investment Real Estate

Matthew J. Schiffman CEO/MANAGING MEMBER
D: 248.281.9907 | C: 248.943.6449
matt@pacommercial.com

Mike Gunn ASSOCIATE
D: 248.331.0202 | C: 248.924.7499
mike@pacommercial.com

115 NORTH CENTER STREET, NORTHVILLE, MI 48167 // FOR LEASE

FLOOR PLANS



*** Suite sizes are approximate*

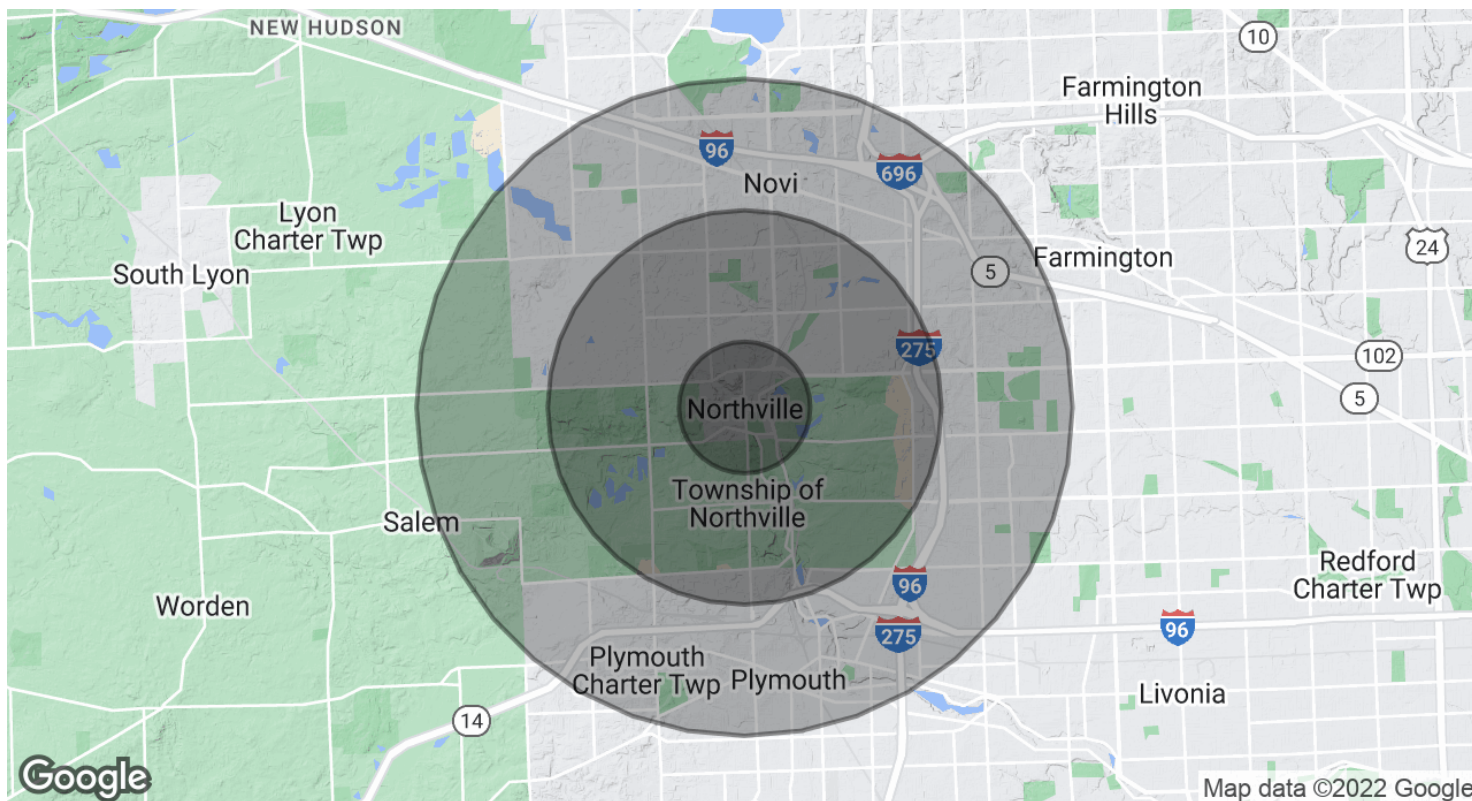


P.A. COMMERCIAL
Corporate & Investment Real Estate

Matthew J. Schiffman CEO/MANAGING MEMBER
D: 248.281.9907 | C: 248.943.6449
matt@pacommercial.com

Mike Gunn ASSOCIATE
D: 248.331.0202 | C: 248.924.7499
mike@pacommercial.com

DEMOGRAPHICS MAP & REPORT



POPULATION	1 MILE	3 MILES	5 MILES
Total Population	8,060	55,590	140,600
Average Age	44.2	41.5	41.3
Average Age (Male)	41.3	39.8	39.7
Average Age (Female)	46.1	43.0	42.7
HOUSEHOLDS & INCOME	1 MILE	3 MILES	5 MILES
Total Households	3,454	21,604	54,839
# of Persons per HH	2.3	2.6	2.6
Average HH Income	\$110,719	\$121,647	\$111,905
Average House Value	\$343,617	\$362,335	\$319,159

* Demographic data derived from 2020 ACS - US Census

115 NORTH CENTER STREET, NORTHVILLE, MI 48167 // FOR LEASE

CONTACT US



FOR MORE INFORMATION, PLEASE CONTACT:



Matthew J. Schiffman
CEO/MANAGING MEMBER

D: 248.281.9907
C: 248.943.6449
matt@pacommercial.com



Mike Gunn
ASSOCIATE

D: 248.331.0202
C: 248.924.7499
mike@pacommercial.com

P.A. Commercial

26555 Evergreen Road, Suite 1500
Southfield, MI 48076

P: 248.358.0100

F: 248.358.5300

pacommercial.com



P.A. COMMERCIAL
Corporate & Investment Real Estate

Matthew J. Schiffman CEO/MANAGING MEMBER

D: 248.281.9907 | **C:** 248.943.6449
matt@pacommercial.com

Mike Gunn ASSOCIATE

D: 248.331.0202 | **C:** 248.924.7499
mike@pacommercial.com