

PARK NORTH I & II

NOW LEASING

8200

0158

stewart

OAKPOINT



8200/8240 N Mopac Expy
Austin, Texas 78759



BUILDING OVERVIEW

Two 3-story office buildings located conveniently in North Austin on MoPac Expressway with 24/7 key card access, fiber optic cabling, nightly security & on-site management. Providing ample, state-of-the-art amenities and a great location, Park North is the ideal modern office space for any company.

PARK NORTH 8200

BUILT IN

1981*

RENTABLE SPACE

134,924 sf*

PARKING RATIO

3.5:1,000*

AVG FLOOR PLATE

22,261 sf*

FLOORS

3*

LOT

3.04 acres*

RENOVATED

2023*

UNFINISHED CEILING HEIGHT

I: 12' II: 13'

*Applies to both Park North I and Park North II



FEATURED AMENITIES

Outdoor communal spaces, newly built fitness and conference centers, and prime proximity to Austin's top amenities.



Newly built fitness center



Large conference center



Outdoor communal space



Generous parking



Prime proximity to Austin's top amenities



24/7 key card access with nightly security



On-site property management





Top amenities in close proximity.

📍 PARK NORTH I & II

1 SHOPS AT ARBOR WALK

Marshalls
Chipotle
BJ's Restaurant and Brewhouse
Lupe Tortilla
Mighty Fine Burgers
Southside Market & BBQ

2 AUSTIN HILLS

Trader Joe's
CAVA
Modern Market
Newk Eatery
Corner Bakery
Honest Mary

3 GATEWAY

Whole Foods Market
Target
The Arboretum
Dave & Buster's
IchiUmi Sushi
Simar Seafood & Steak

4 THE DOMAIN

Topgolf
Lululemon
Nordstrom
Dillard's
Velvet Taco
Apple

5 NORTH SHOAL CREEK

Starbucks
P. Terry's Burger Stand
Reunion Park
Waterloo Ice House
Cabo Bob's
Jack Allen's

6 QUARRY

Chick-fil-A
Whole Foods
Target
Trek Bicycle
Marco's Pizza
Schlotzsky's



AVAILABILITY

Park North I, Suite 140

SIZE

385 sf

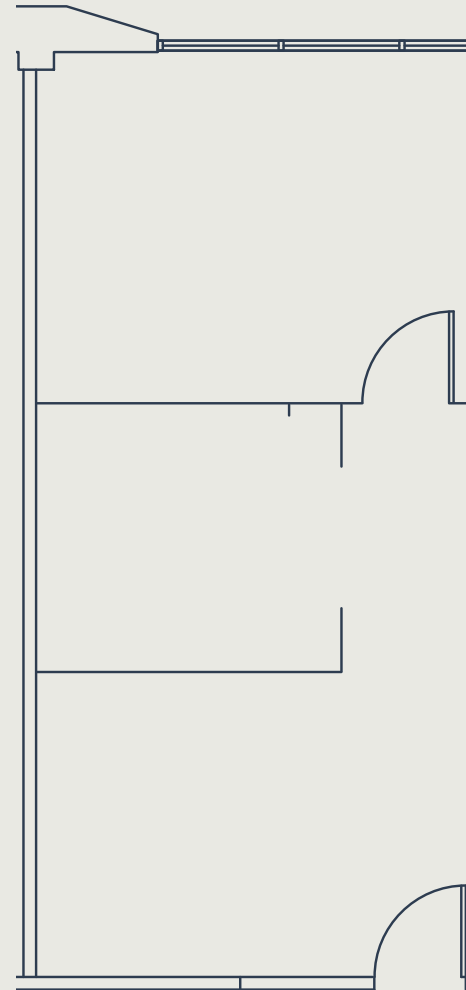
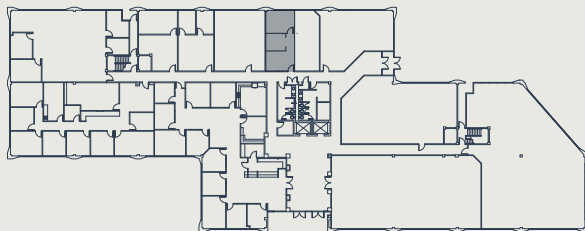
AVAILABLE

10/1/2026

LEVEL 3

LEVEL 2

▶ LEVEL 1





AVAILABILITY

Park North I, Suite 200

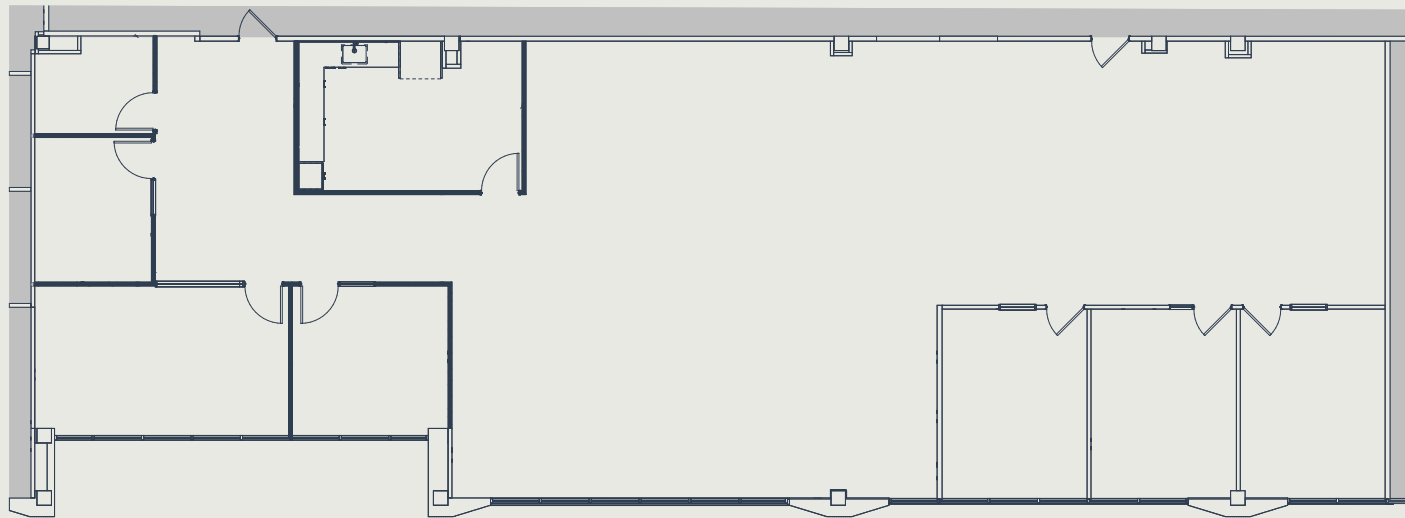
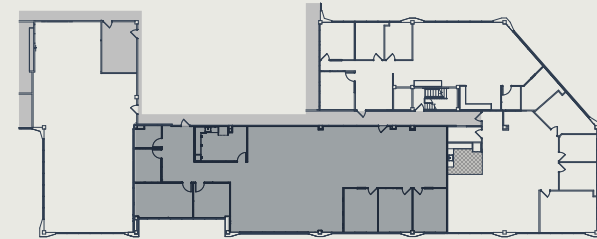
SIZE

4,408 sf

WHITEBOX

Available Now

- LEVEL 3
- ▶ LEVEL 2
- LEVEL 1





AVAILABILITY

Park North I, Suite 295

SIZE

2,586 sf

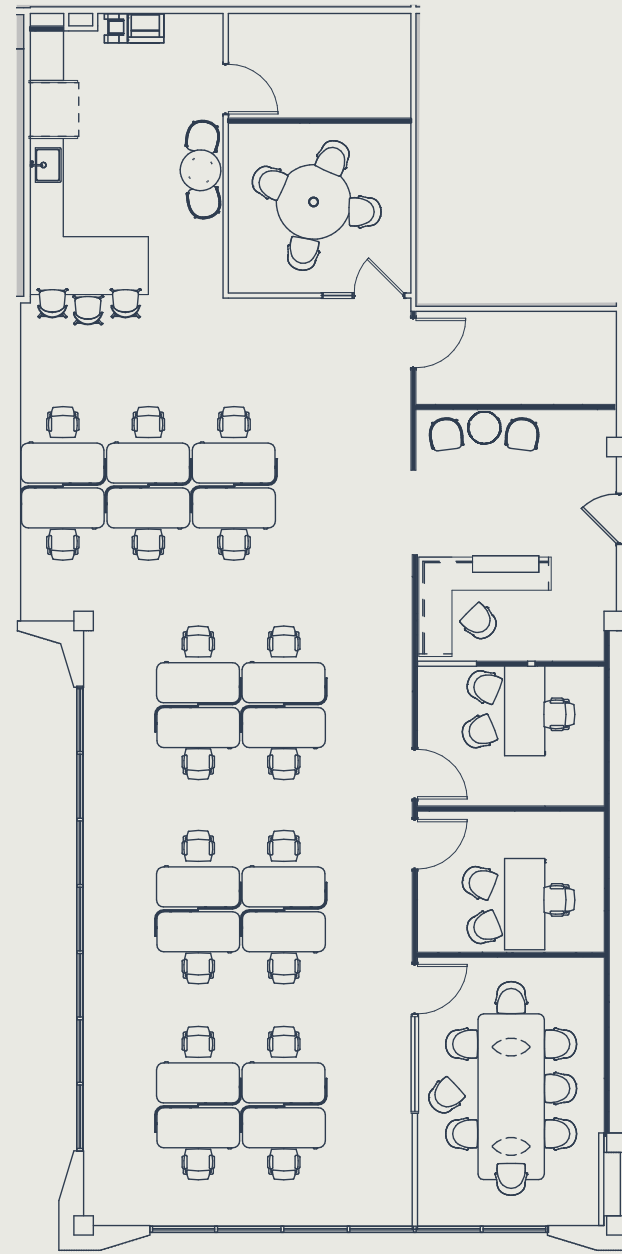
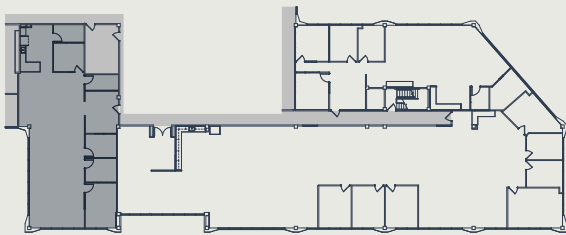
SPEC SUITE

Available Now

LEVEL 3

▶ LEVEL 2

LEVEL 1





AVAILABILITY

Park North I, Suite 310

SIZE

2,912 sf

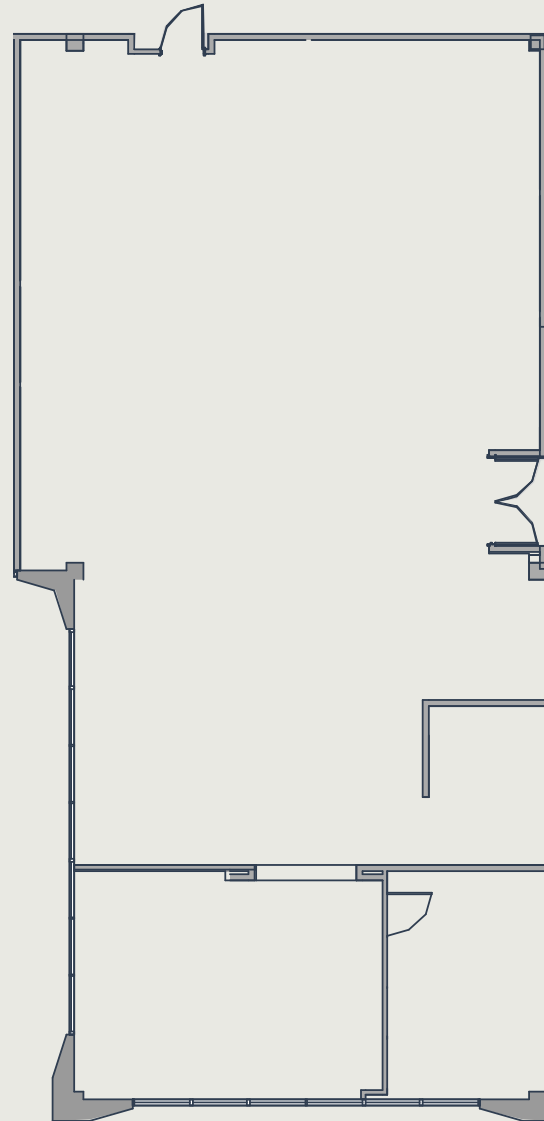
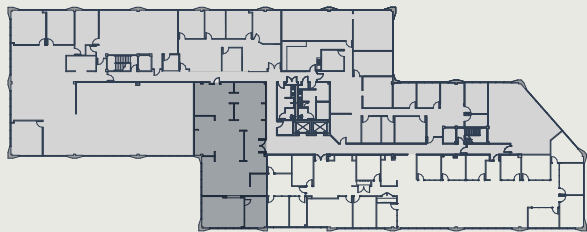
AVAILABILITY DATE

5/1/2026

▶ LEVEL 3

LEVEL 2

LEVEL 1





AVAILABILITY

Park North II, Suite 125

SIZE

1,337 sf

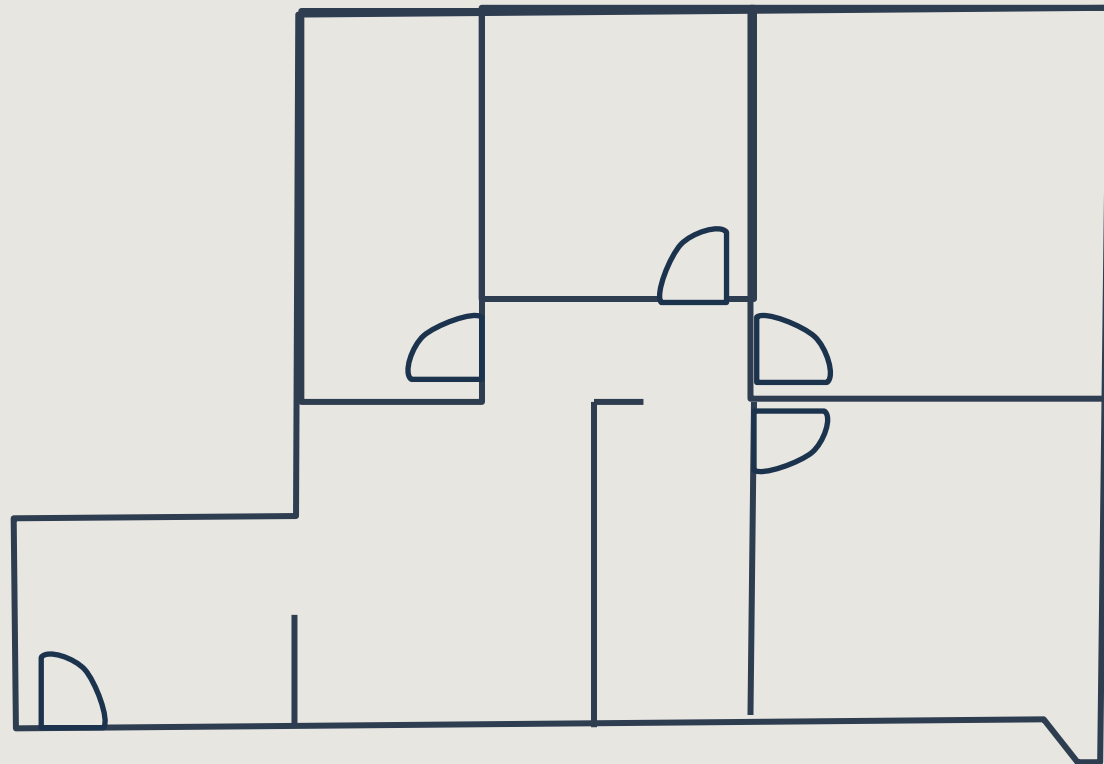
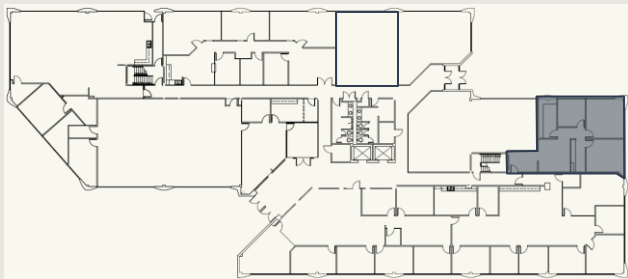
AVAILABILITY DATE

Available Now

LEVEL 3

LEVEL 2

▶ LEVEL 1





AVAILABILITY

Park North II, Suite 145

SIZE

749 sf

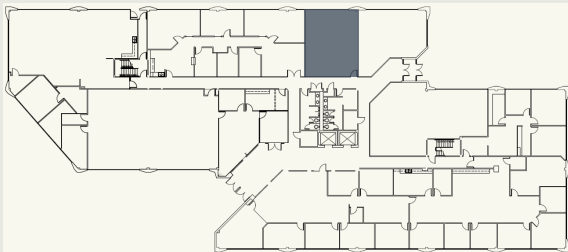
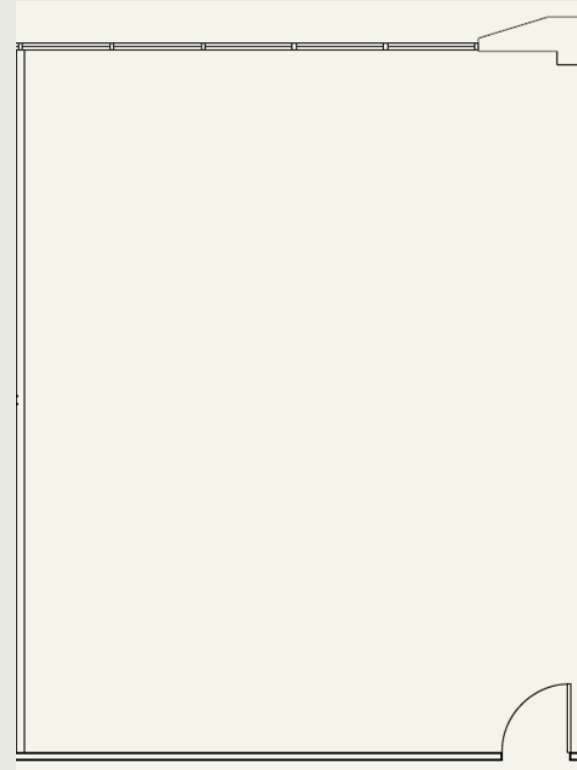
AVAILABILITY DATE

5/1/2026

LEVEL 3

LEVEL 2

▶ LEVEL 1





AVAILABILITY

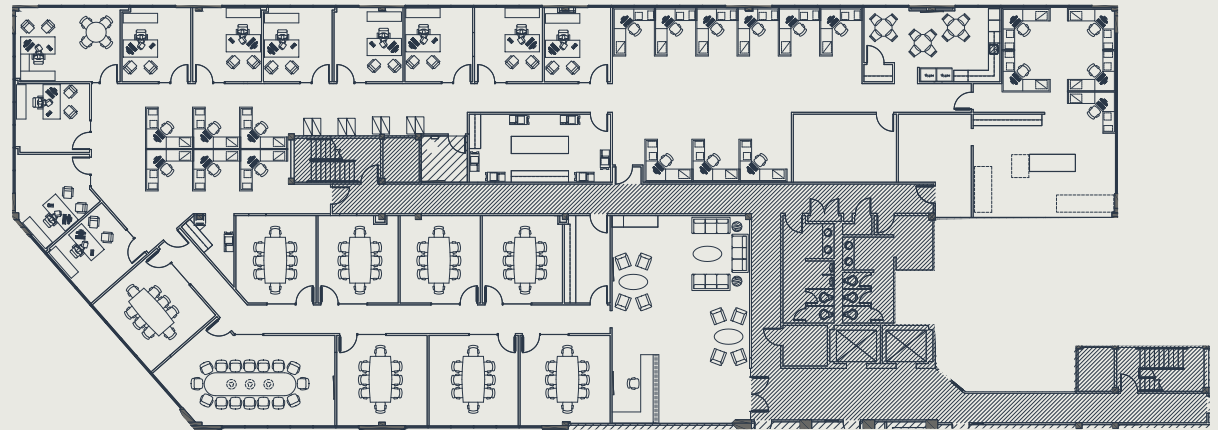
Park North II, Suite 200

SIZE

11,917 sf

AVAILABILITY DATE

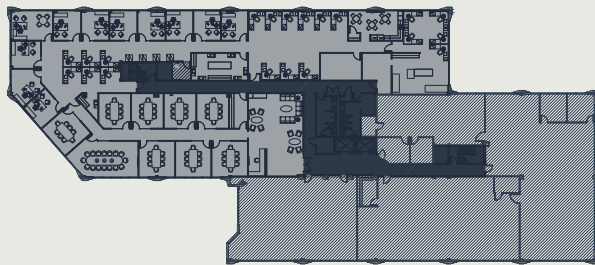
5/1/2026



LEVEL 3

▶ LEVEL 2

LEVEL 1





AVAILABILITY

Park North II, Suite 310

SIZE

2,536 sf

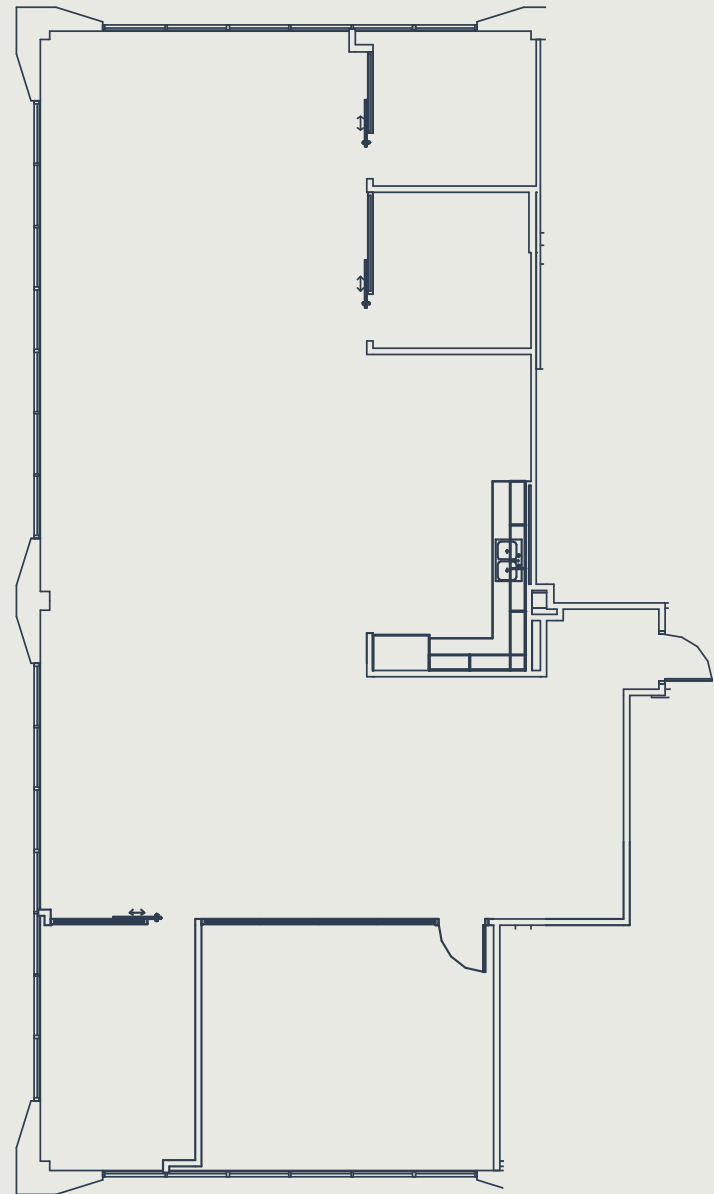
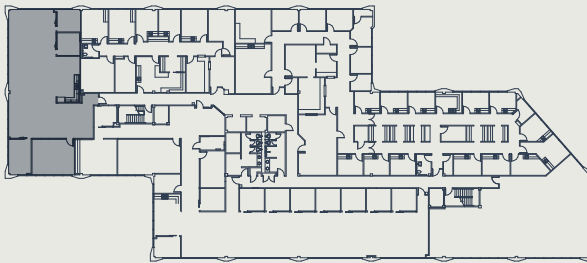
AVAILABILITY DATE

Available Now

▶ LEVEL 3

LEVEL 2

LEVEL 1





AVAILABILITY

Park North II, Suite 325

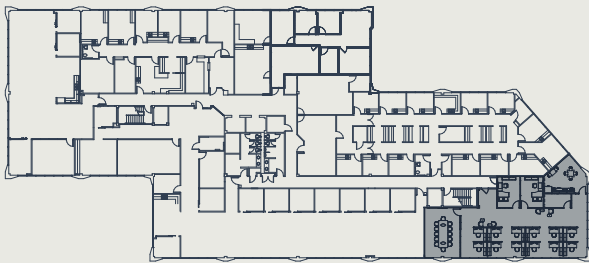
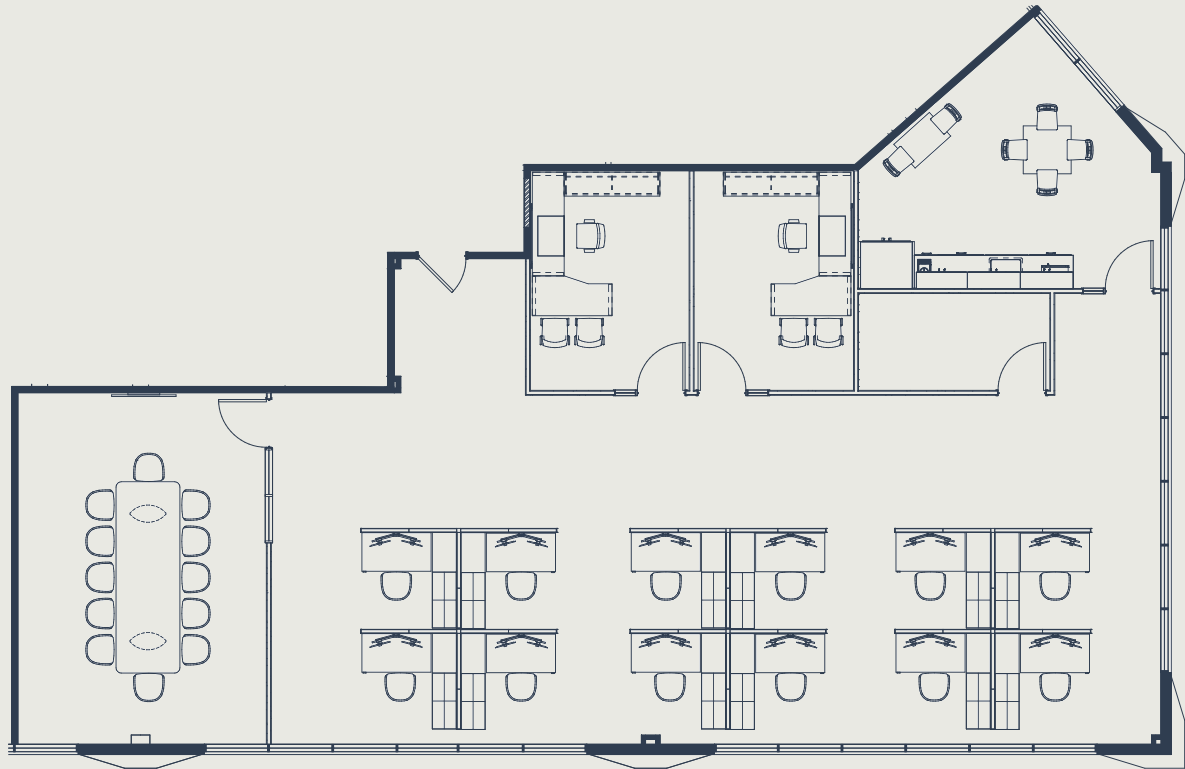
SIZE

2,392 sf

AVAILABILITY DATE

Available Now

- ▶ LEVEL 3
- LEVEL 2
- LEVEL 1





LEASING INFORMATION

Park North I & II is locally owned and operated by OakPoint, a vertically integrated firm with a diverse portfolio in commercial, multifamily, office, residential, and industrial real estate.

For leasing information, please contact:

RYAN BUSCHA

Director

O (512) 975-2253

E rbuscha@oakpointre.com

DAN FRICKS

Leasing

O (512) 640-6278

E dfricks@oakpointre.com

