

SALE

CLINICAL SUITE IN SILVER LAKE

10315 19th Ave SE, Ste 112 Everett, WA 98208



Sale Price

\$899,000

OFFERING SUMMARY

Available SF:	2,372 SF
Lot Size:	2.04 Acres
Year Built:	2005
Zoning:	MU

PROPERTY OVERVIEW

Suite 112 is an exceptional 2,372 square foot medical office in a prime Silver Lake location, meticulously designed for healthcare professionals seeking a practice space. Previously used for counseling services, dental office, and sleep studies.

This turnkey medical suite eliminates the need for extensive build-out. The thoughtful design and premium location make this an outstanding opportunity for healthcare professionals ready to establish or expand their practice in Silver Lake.

Call for a tour - please do not disturb current tenant.

Heidi Ihde
(425) 478-7546
heidi@hlbirealestate.com



**COLDWELL BANKER
COMMERCIAL**
DANFORTH

SALE

CLINICAL SUITE IN SILVER LAKE

10315 19th Ave SE, Ste 112 Everett, WA 98208



LOCATION ADVANTAGES

Strategically positioned on 19th Avenue directly across from Costco, this location offers high visibility and easy access for patients, along with ample parking and a convenient setting for both patients and staff. Situated within an established medical corridor, it benefits from proximity to complementary healthcare services, enhancing its appeal as a prime location for medical practices.

PROFESSIONAL LAYOUT & DESIGN

- 6 spacious exam rooms/offices with built-in sound attenuation for optimal patient privacy including a large, private physician/practitioner/director office for consultations and administrative work
- Large reception area with integrated nurses station for seamless workflow
- Dedicated server/computer area
- Ample storage throughout the suite

PATIENT-FOCUSED AMENITIES

- Three restrooms including one ADA-compliant- Abundant natural light enhanced by 2 skylights creating a welcoming atmosphere
- Quiet corner unit location insures minimal disruption and maximum privacy
- Sound-attenuated suites originally built for sleep study clinic –perfect for counseling sessions

IDEAL FOR:

- Medical practices
- Dental offices
- Mental health counseling centers
- Specialty clinics
- Multi-practitioner wellness centers

Heidi Ihde
(425) 478-7546
heidi@hlbirealestate.com

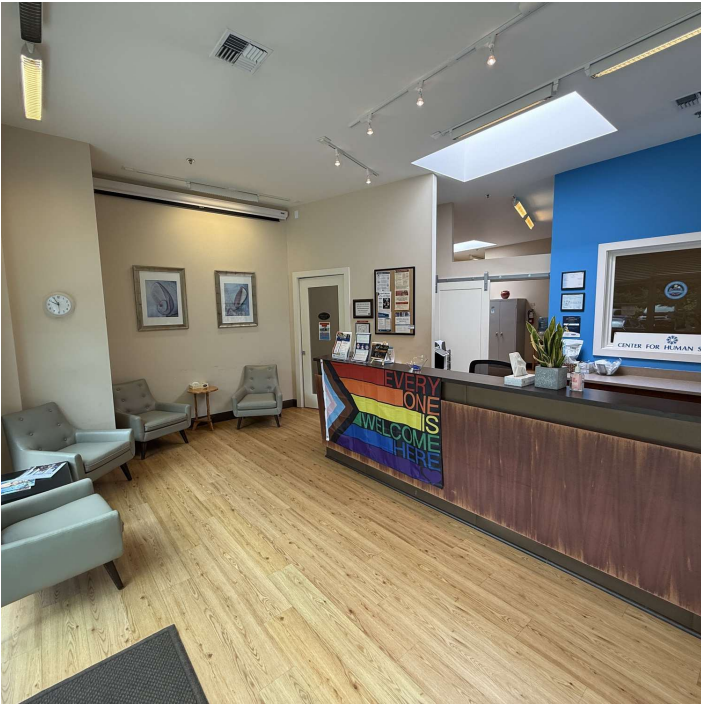


**COLDWELL BANKER
COMMERCIAL**
DANFORTH

SALE

CLINICAL SUITE IN SILVER LAKE

10315 19th Ave SE, Ste 112 Everett, WA 98208



Heidi Ihde
(425) 478-7546
heidi@hlbirealestate.com

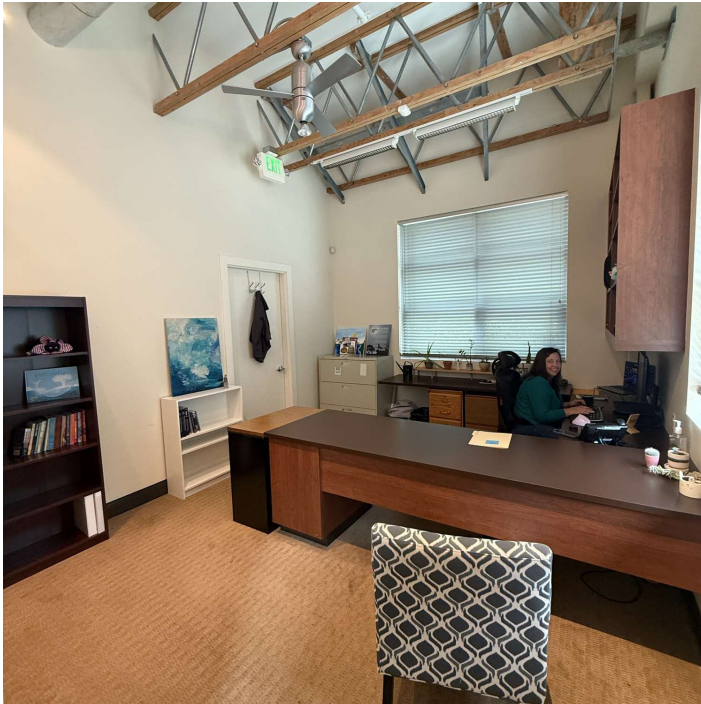


**COLDWELL BANKER
COMMERCIAL**
DANFORTH

SALE

CLINICAL SUITE IN SILVER LAKE

10315 19th Ave SE, Ste 112 Everett, WA 98208



Heidi Ihde
(425) 478-7546
heidi@hlbirealestate.com

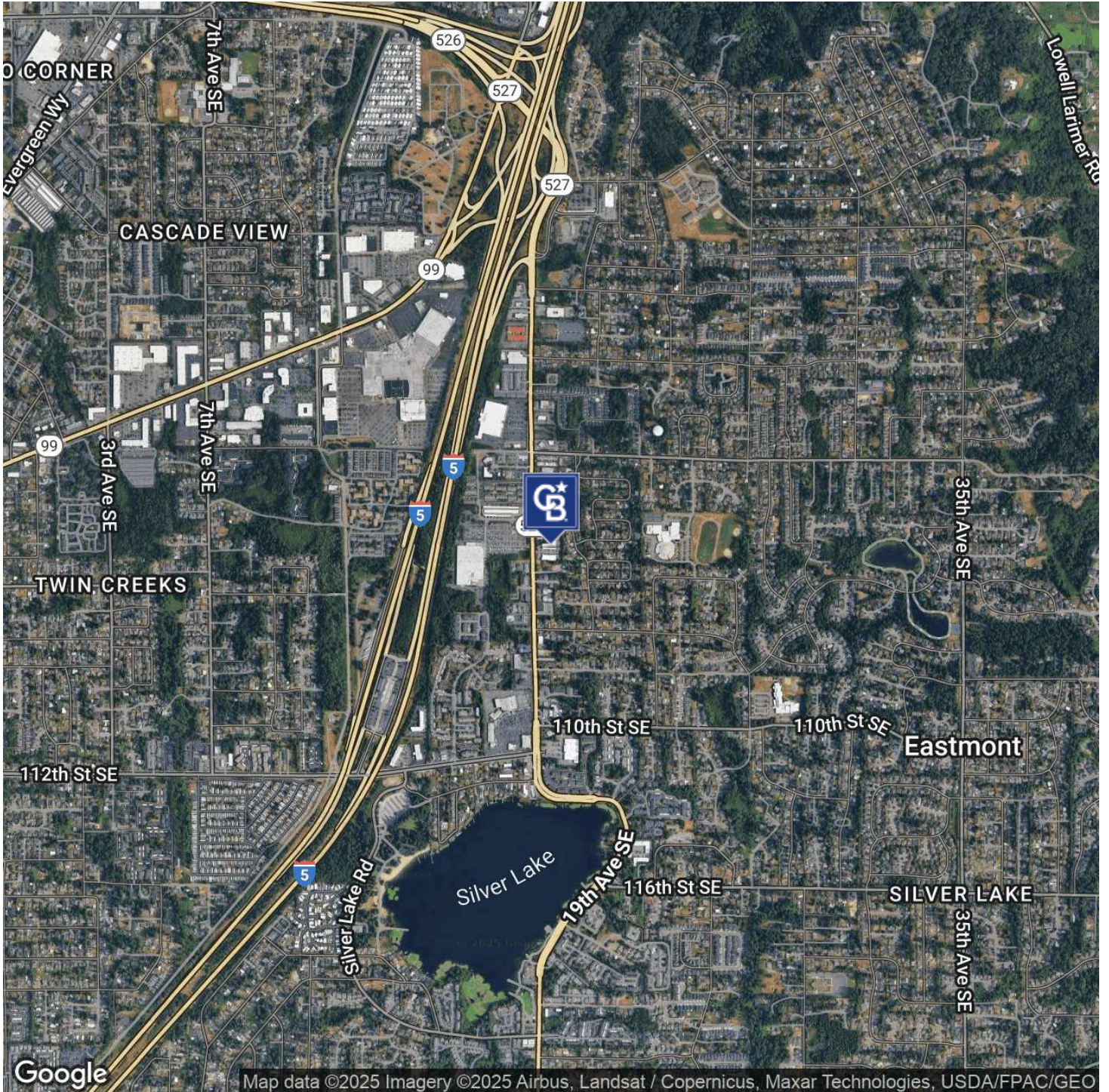


**COLDWELL BANKER
COMMERCIAL**
DANFORTH

SALE

CLINICAL SUITE IN SILVER LAKE

10315 19th Ave SE, Ste 112 Everett, WA 98208



Heidi Ihde
(425) 478-7546
heidi@hlbirealestate.com



**COLDWELL BANKER
COMMERCIAL**
DANFORTH