

**41735 RIDER WAY, SUITE 103
TEMECULA, CA 92590**

FOR LEASE

± 1,945 SF

INDUSTRIAL / FLEX SPACE



JACKIE BEAUCHAMP

(951) 684-1251 | jbeauchamp@mcgre.com

DRE License # #01461175 | #01899258



**MARTIN
COMMERCIAL
GROUP**

Commercial Real Estate Services

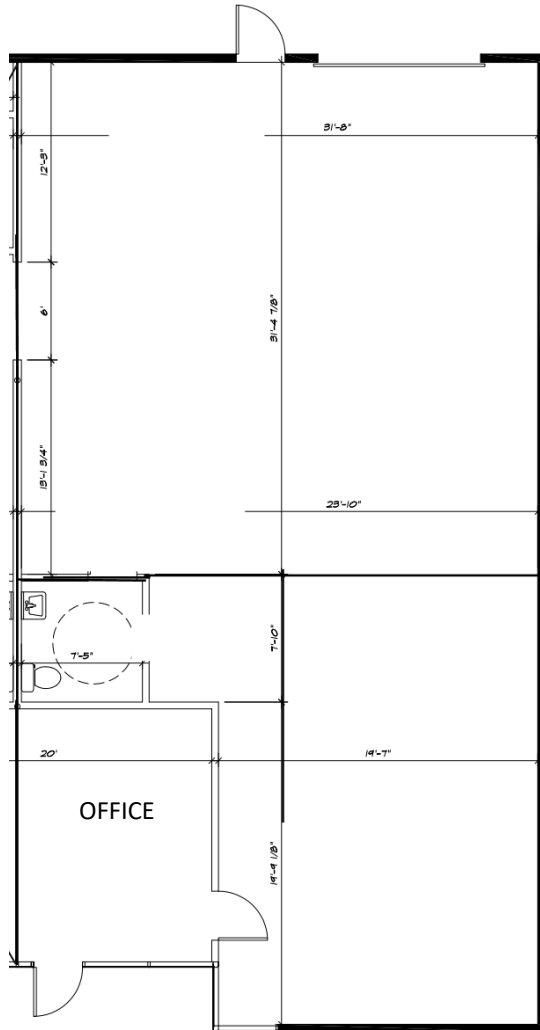
WWW.MCGRE.COM

**41735 RIDER WAY, SUITE 103
TEMECULA, CA 92590**

FOR LEASE

± 1,945 SF

INDUSTRIAL / FLEX SPACE



PROPERTY HIGHLIGHTS

- **±1,945 SF Industrial / Flex Space Available**
- **Upgraded Interior!**
- **Full Climate Control in Warehouse or can Cap off HVAC**
- **1 Office & Large Open Showroom/Warehouse**
- **Interior Private Restroom**
- **SC Zoning within the Uptown Art District (Verify)**
- **CALL AGENT TO SHOW!**



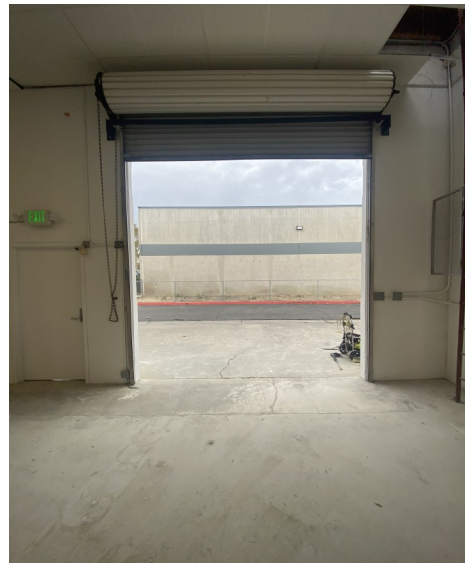
**MARTIN
COMMERCIAL
GROUP**
Commercial Real Estate Services

The information contained herein has been obtained from sources we deem reliable. While we have no reason to doubt its accuracy, we do not guarantee it.

CORPORATE OFFICE: 1495 E. WARNER AVENUE ~ SANTA ANA, CA 92705
Orange County 714-241-1141
Inland Empire: 951-684-1251

**41735 RIDER WAY, SUITE 103
TEMECULA, CA 92590**

**FOR LEASE
± 1,945 SF
INDUSTRIAL / FLEX SPACE**



The information contained herein has been obtained from sources we deem reliable. While we have no reason to doubt its accuracy, we do not guarantee it.

**CORPORATE OFFICE: 1495 E. WARNER AVENUE ~ SANTA ANA, CA 92705
Orange County 714-241-1141
Inland Empire: 951-684-1251**