



**WORLD HOUSTON**  
INTERNATIONAL BUSINESS CENTER

**BUILDING 15**  
**SUITE 100**



## 3,075 SQUARE FEET

3995 WORLD HOUSTON PKWY, SUITE 100, HOUSTON, TX



- 2,315 SF Office



- Class A Tilt-Wall Building in Master-Planned Industrial Park



- 760 SF Climate Controlled Warehouse



- End Cap Space



- Rear Load (1 Grade Level Door)



- 5:1,000 Parking Ratio



- 16' Clear Height



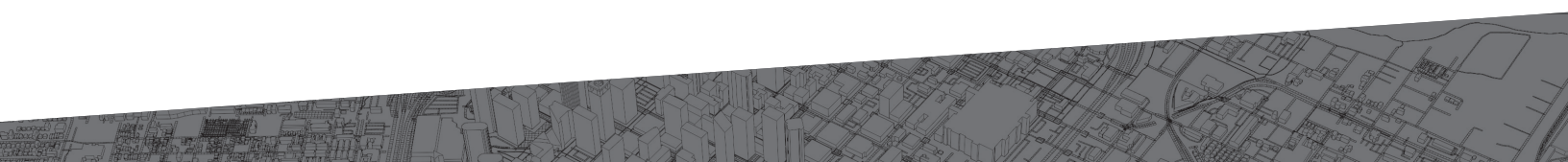
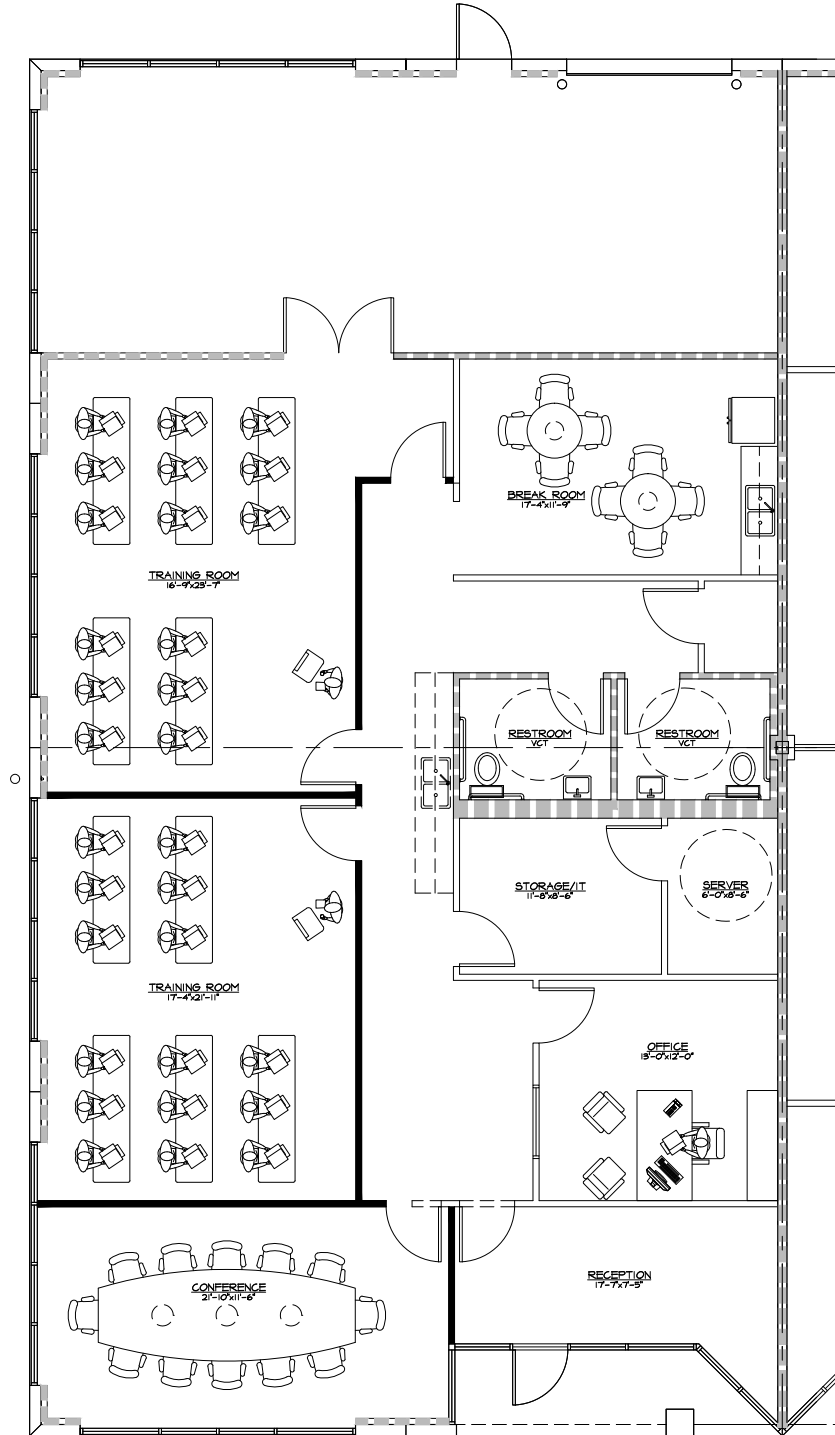
- Located in North Houston adjacent to Bush IAH



# FLOOR PLAN

**3,075 SQUARE FEET**

**3995 WORLD HOUSTON PKWY, SUITE 100, HOUSTON, TX**





# LOCATION MAPS



**CONTACT INFORMATION**

**LOGAN GREER**  
lgreer@insiterealty.com  
713.339.5363

**DAYNE WUNDERLICH**  
dwunderlich@insiterealty.com  
713.339.5329

**EASTGROUP**  
PROPERTIES

**INSITE**