

AVAILABLE

31-90 Steinway Street

ASTORIA, NEW YORK 11105

RETAIL



PROPERTY INFO

- + Premises: 3,440 SF
- + Frontage: 42'-4"
- + Term: Through December 31, 2027 with additional options
- + Neighboring Tenants: Duane Reade; Chase Bank; Starbucks; Uni K Wax; GoHealth Urgent Care; CityMD; The Gap & Gap Kids; Victoria Secret; FedEx; Express; Verizon Wireless; GNC; McDonalds; Payless Shoes; Bank of America; Gamestop; The Children's Place; Zales; Bath & Body Works
- + Comments:
 - Great frontage retail space steps from the busy intersection of Steinway Street and Broadway in prime Astoria, Queens
 - Located on Steinway's best block, between Broadway and 31st Avenue
 - Amazing 7-Day per week pedestrian and vehicular counts
 - Steps to the Steinway (M/R) Subway with 4.8 Million Annual Ridership
- + Asking Price: Upon Request

CONTACT US

DEAN ROSENZWEIG

Senior Vice President
+1 718 289 7715
dean.rosenzweig@cbre.com

JEREMY SCHOLDER

Senior Associate
+1 718 289 7704
jeremy.scholder@cbre.com

ED GLACKIN

Associate
+1 718 289 7707
ed.glackin@cbre.com

www.cbre.us

CBRE

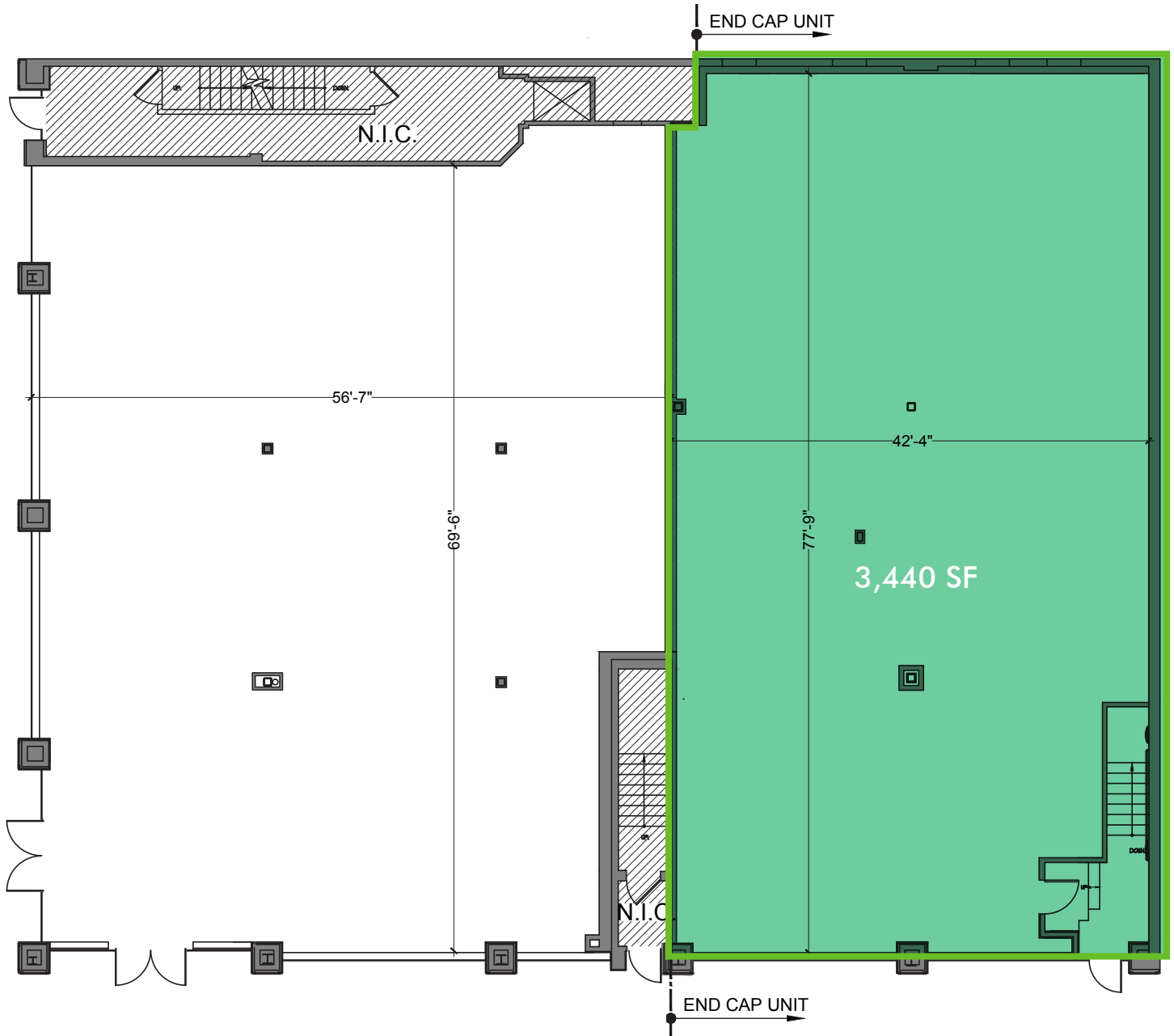
AVAILABLE

31-90 Steinway Street

ASTORIA, NEW YORK 11105

RETAIL

PROPOSED FLOOR PLAN



CONTACT US

DEAN ROSENZWEIG

Senior Vice President
+1 718 289 7715
dean.rosenzweig@cbre.com

JEREMY SCHOLDER

Senior Associate
+1 718 289 7704
jeremy.scholder@cbre.com

ED GLACKIN

Associate
+1 718 289 7707
ed.glackin@cbre.com

www.cbre.us

CBRE

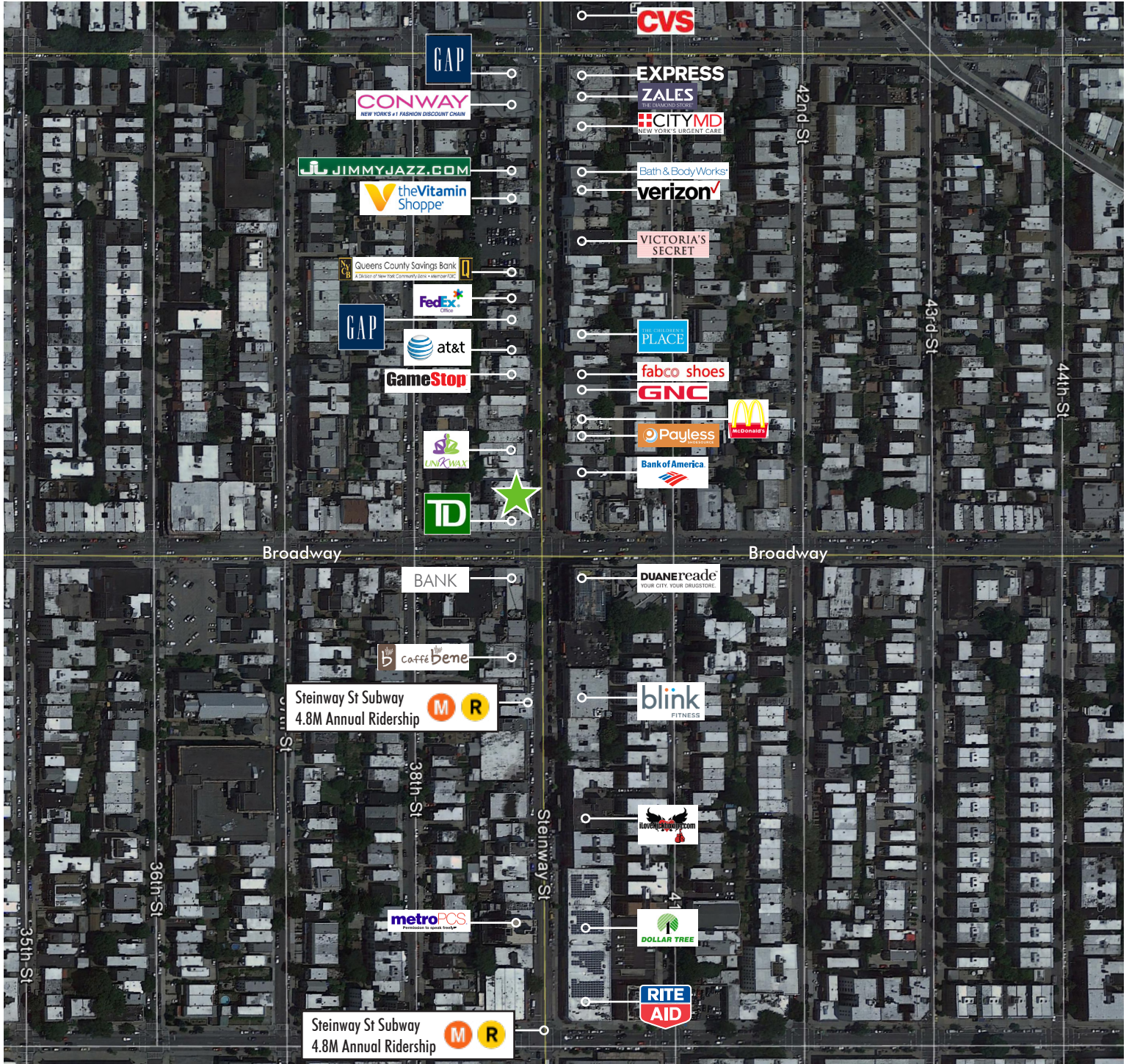
AVAILABLE

31-90 Steinway Street

ASTORIA, NEW YORK 11105

RETAIL

NEIGHBORING TENANTS



© 2016 CBRE, Inc. The information contained in this document has been obtained from sources believed reliable. While CBRE, Inc. does not doubt its accuracy, CBRE, Inc. has not verified it and makes no guarantee, warranty or representation about it. It is your responsibility to independently confirm its accuracy and completeness. Any projections, opinions, assumptions or estimates used are for example only and do not represent the current or future performance of the property. The value of this transaction to you depends on tax and other factors which should be evaluated by your tax, financial and legal advisors. You and your advisors should conduct a careful, independent investigation of the property to determine to your satisfaction the suitability of the property for your needs. Photos herein are the property of their respective owners and use of these images without the express written consent of the owner is prohibited. CBRE and the CBRE logo are service marks of CBRE, Inc. and/or its affiliated or related companies in the United States and other countries. All other marks displayed on this document are the property of their respective owners.

www.cbre.us

CBRE