



NATHAN LN

45th AVE N

ROCKFORD RD



FOR SALE | MEDICAL/OFFICE BUILDINGS

PLYMOUTH PROFESSIONAL

PROPERTY OVERVIEW

FOR SALE

BUILDING INFORMATION

- × **Location:** 9750 + 9800 Rockford Road
Plymouth, MN 55442
- × **Building Size:** 15,144 sq. ft. + 7,700 sq. ft.
- × **Lot Size:** 2.4 acres
- × **Zoning:** O: Office
- × **Year Built:** 1993
- × **Parking:** 9750 Building: 79 stalls
9800 Building: 44 stalls

HIGHLIGHTS

- × Building exterior and pylon signage available
- × Great exposure + easy access to Rockford Rd & Hwy 169
- × Located on highly visible corner
- × Medical/Office building with ample surface parking
- × Excellent owner/user opportunity with income

ASKING PRICE

- × Negotiable

2025 Proposed Real Estate Taxes

- × \$70,800 (9750 bldg) + \$44,000 (9800 bldg)

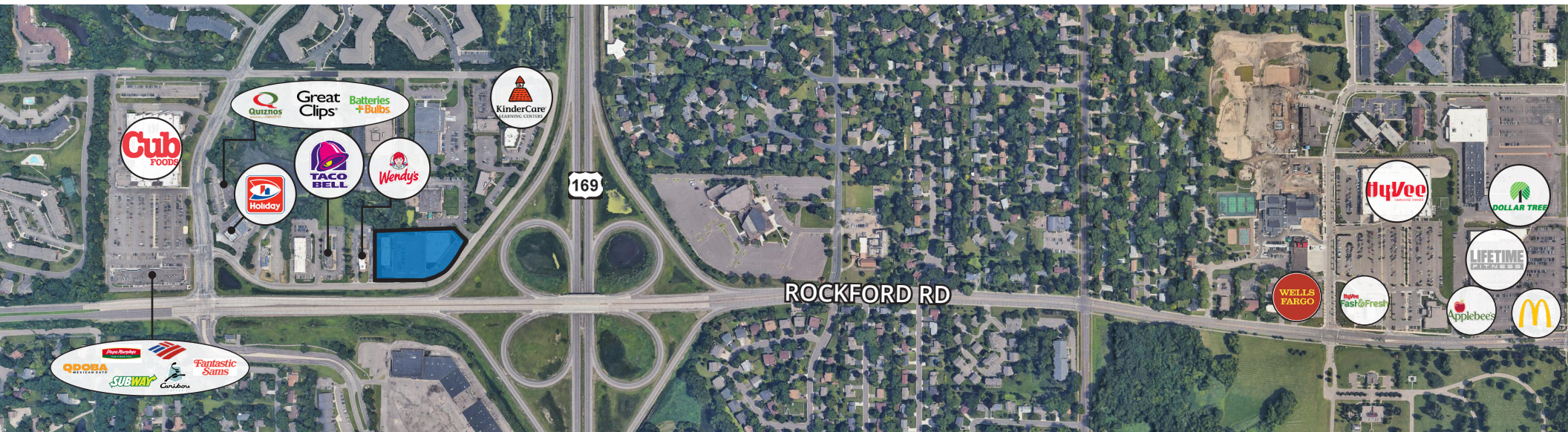
9800 AVAILABILITY

- × 100% Leased

9750 AVAILABILITY

- × Suite 100 | 12,687 RSF

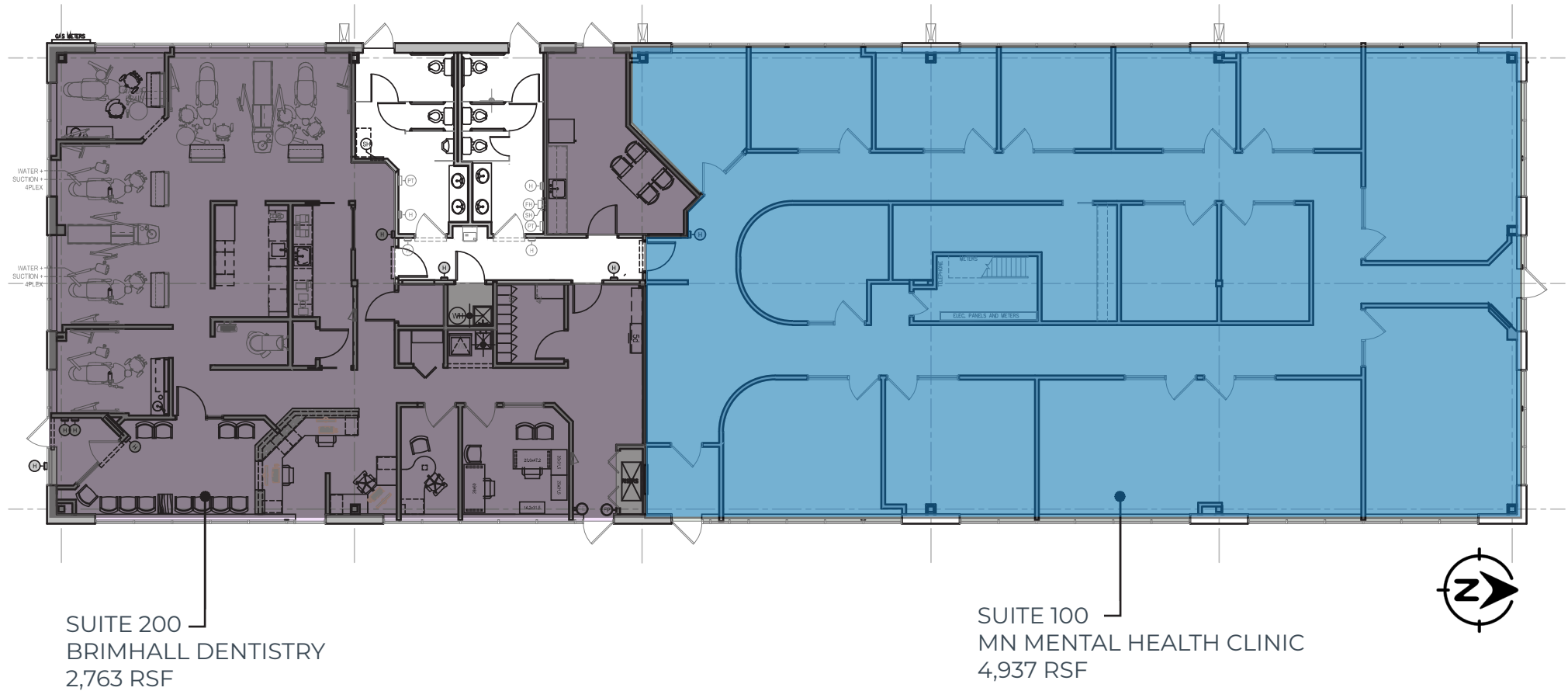
AREA AMENITIES





FLOOR PLAN

9800 Rockford Rd



CONTACT:

Bryan Beltrand | 612.359.1616 | bryan.beltrand@transwestern.com
Chad Anvary | 612.359.1642 | chad.anvary@transwestern.com

FLOOR PLAN

9750 Rockford Rd



SUITE 100
AVAILABLE
12,687 SF

SUITE 400
HERITAGE DENTAL
2,457 SF



CONTACT:

Bryan Beltrand | 612.359.1616 | bryan.beltrand@transwestern.com
Chad Anvary | 612.359.1642 | chad.anvary@transwestern.com



TRANSWESTERN

REAL ESTATE
SERVICES