

Sub-Lease Available:

**2522**  
**W SUNSET BLVD**

SILVER LAKE



CREATIVE SPACE / RETAIL





# LOCATION

## Silver Lake

Nestled in the vibrant heart of Silver Lake, this open and airy space offers an opportunity for a number of uses. Located on the bustling Sunset Blvd, you'll be in great company with renowned neighbors like Pijja Palace, Greekman's, and PETA.

The neighborhood's blend of culture, art, and community ensures a steady flow of patrons eager to stumble upon new events and retail experiences. Don't miss the chance to be part of Silver Lake's exciting creative scene.



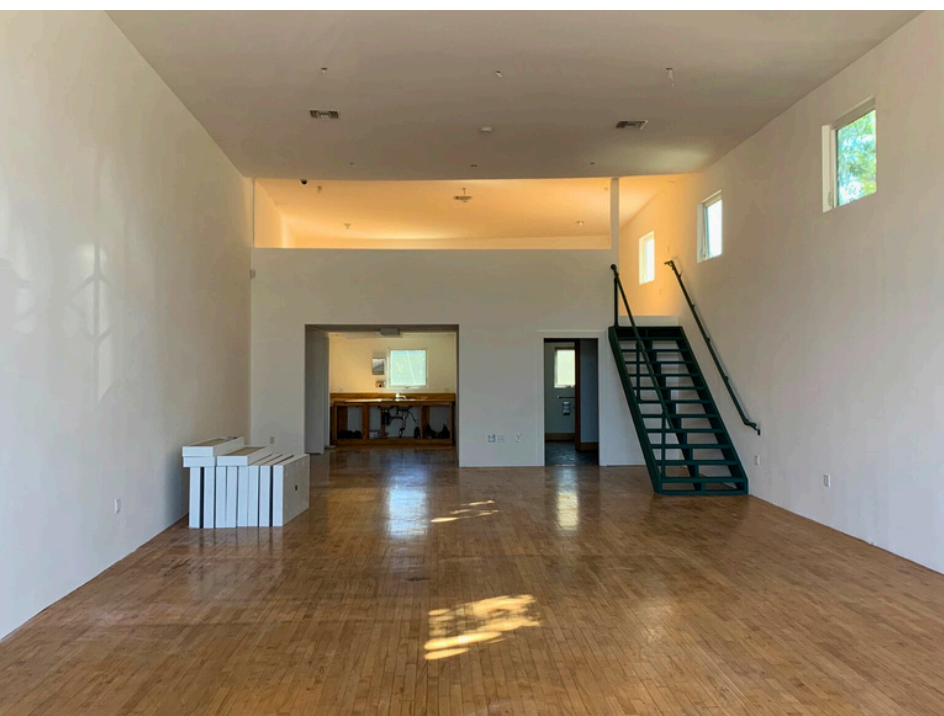


# PROPERTY SPECS

- Size: 1,600 sf
- Bonus 400 sf Mezzanine
- Rent: \$5.50 +NNN
- New Lease With Landlord
- Beautiful Architectural Features
- Tandem Parking Space at Rear
- Current Tenant is Moving to a New Location
- Available Now









## NEIGHBORING TENANTS

**DS&D  
URGA**

**Candid**  
HOME

*free people*

  
new balance

**FILSON**  
SINCE 1897

**WASTELAND**



## CONTACT

### Lorena Tomb

213.277.7247 x1

[Lorena@urbanlimere.com](mailto:Lorena@urbanlimere.com)

BRE # 01894475

### Chris Stewart

213.277.7247 x2

[Chris@urbanlimere.com](mailto:Chris@urbanlimere.com)

BRE # 02142374