

Industrial / Flex Availability

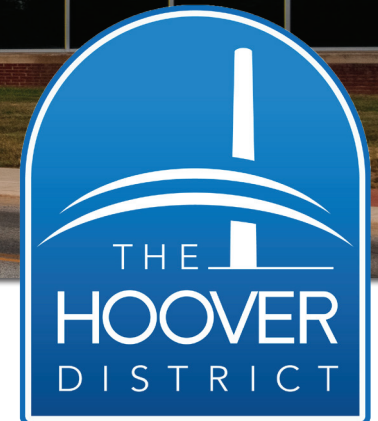
101 East Maple Street, North Canton, OH

The Hoover District is located within minutes of I-77 and the Akron Canton Airport on the corner of Main Street and East Maple in the heart of Downtown North Canton, OH. The historic property sits on 88 acres and encompasses 1.4 million square feet.



Austin Semarjian
216.570.2270 | asemarjian@icpllc.com

Alysse LaMarca
440-785-5575 | alamarca@icpllc.com



Property Facts

Total Available 134,202 SF

Surface Parking 907 free of charge

Elevators One (1) passenger elevator Capability for two (2) if needed AT&T and Spectrum

Signage Façade signage available

Fiber Optics Connection is available at building
Area served by two (2) circuits (AT&T and Spectrum)

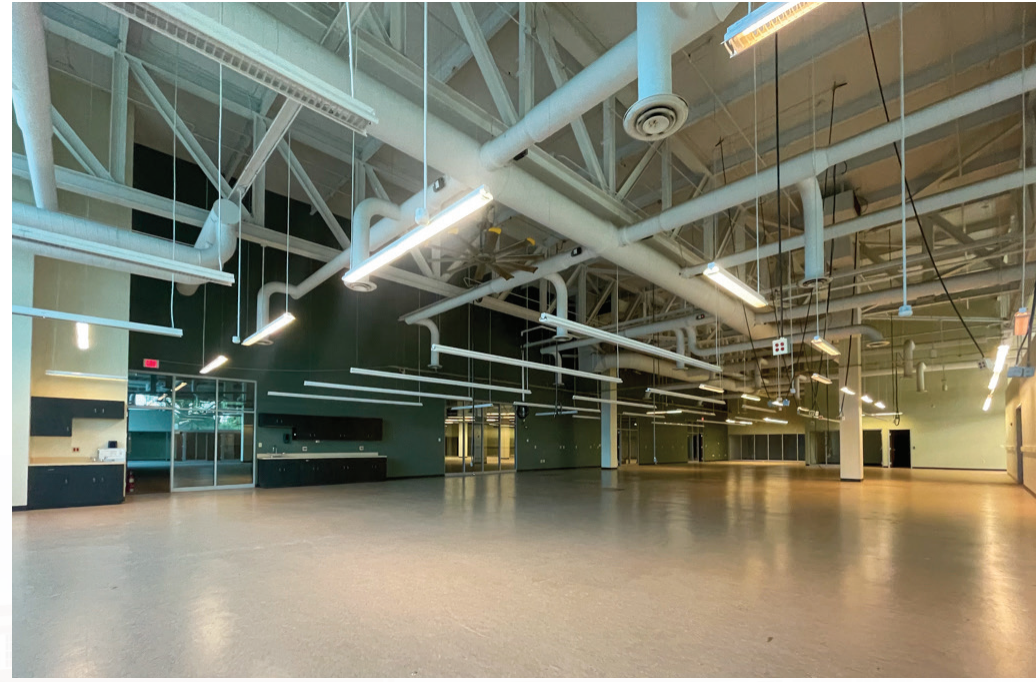
Electricity Tenants are separately metered and billed for electricity consumed through, lights, outlets and HVAC.

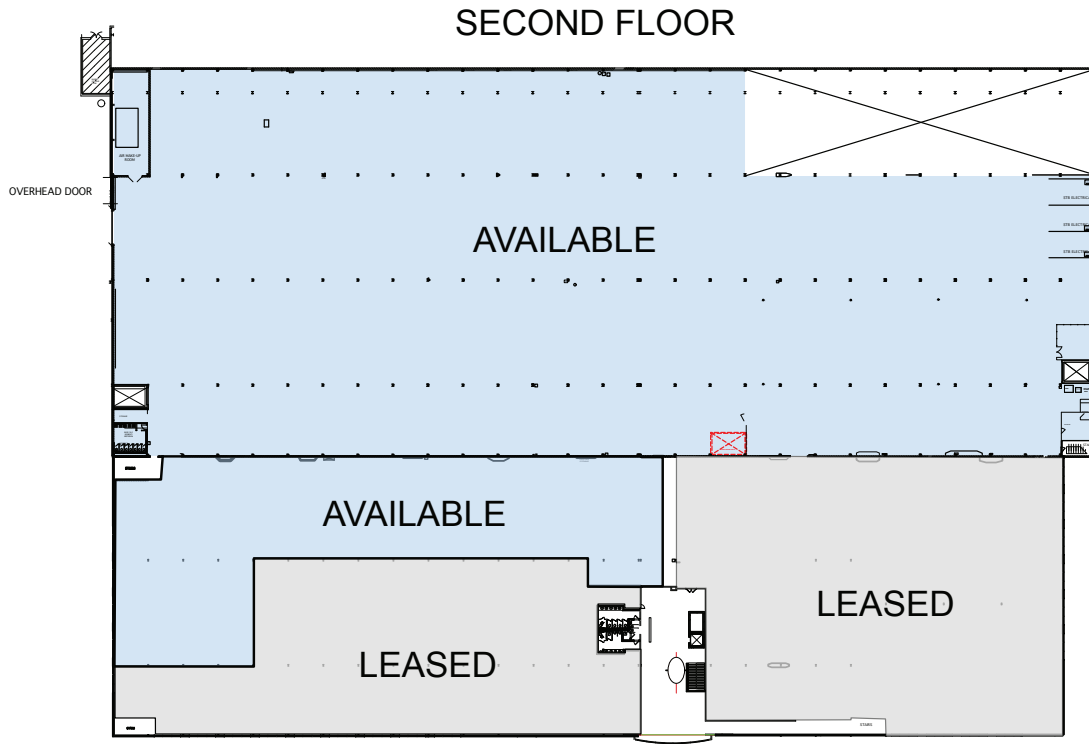
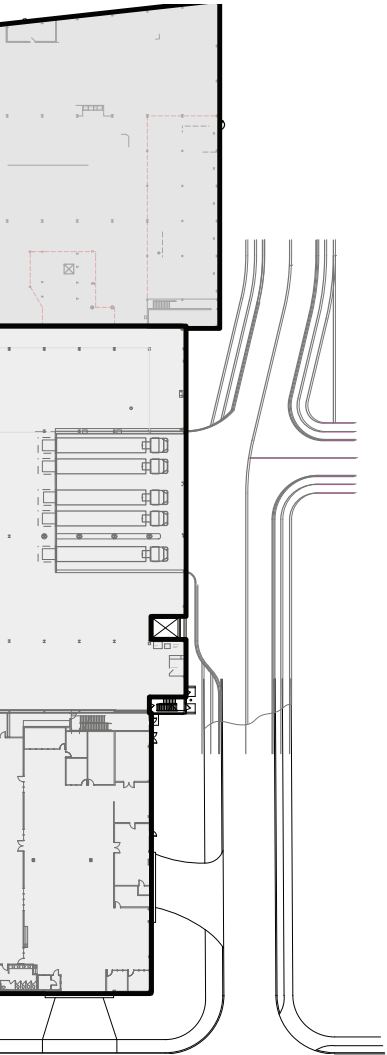
Security Key card access to building suite. Suburban building with a nightly and weekend (24 hours /365 days) manned security station.

Sprinklered Fully sprinklered with flow, pressure and valve tamper alarms. Smoke and fire alarms



Aerial





SECOND FLOOR
AVAILABLE = 134,202 SF