

# 420 EAST SOUTH TEMPLE

FOR LEASE



## PROPERTY DETAILS

420 East South Temple, Salt Lake City, UT 84111

- **\$24.00/RSF full service**
- Plug and play space available
- Creative space available
- Common areas recently upgraded
- Within minutes of the courthouse and CBD
- Within minutes of three hospitals
- Within 15 minutes of Salt Lake City International Airport
- Abundant free covered parking- 3/1,000 Ratio
- Stunning views of the mountains and skyline
- Attractive grounds with large courtyard

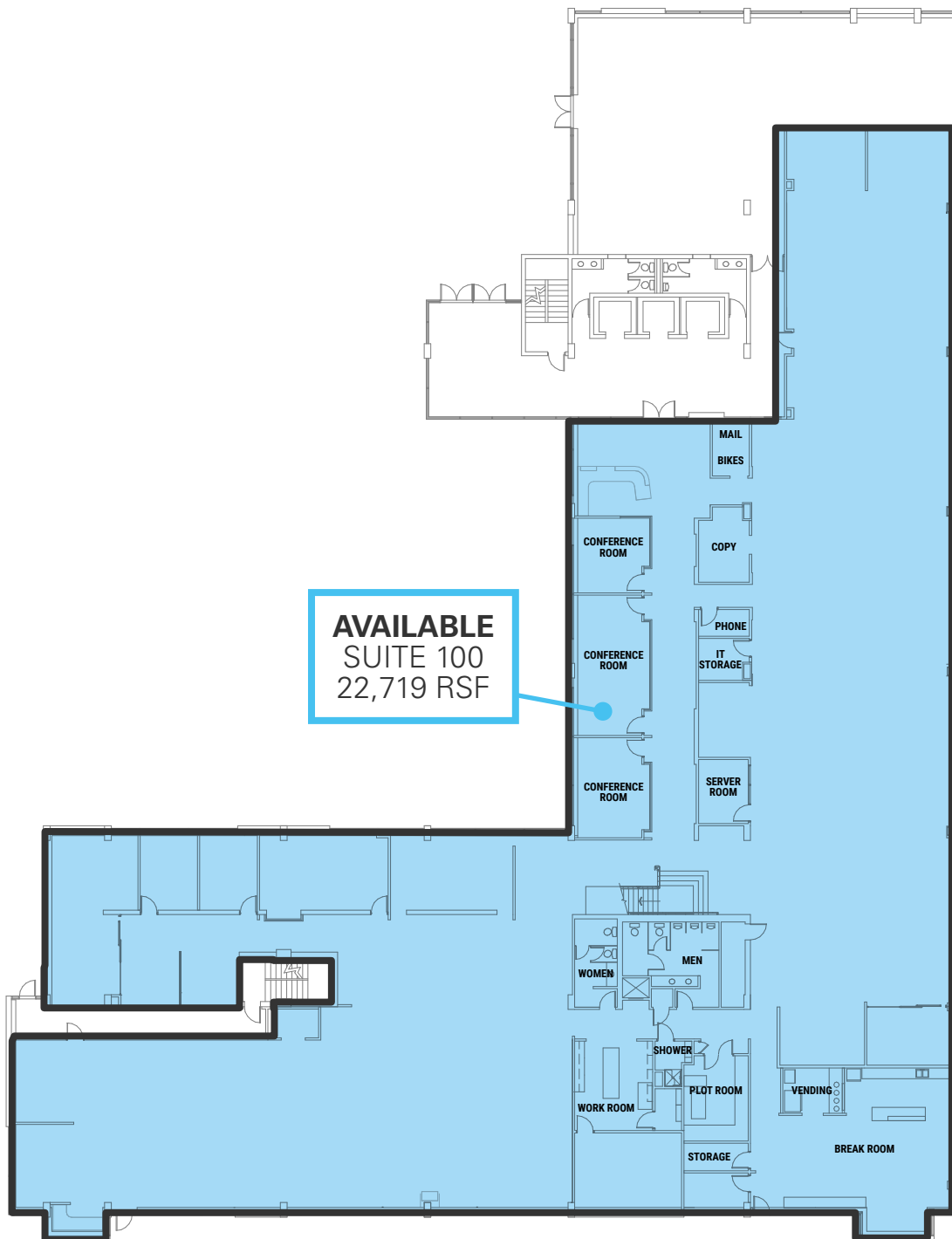


**COLLIN PERKINS**  
cperkins@newmarkmw.com  
direct 801.604.0064  
[View Profile](#)

**SKYE GALLEY**  
sgalley@newmarkmw.com  
direct 801.971.3602  
[View Profile](#)

**FULL SERVICE  
COMMERCIAL REAL ESTATE**  
312 East South Temple  
Salt Lake City, Utah 84111  
Office 801.456.8800  
[www.newmarkmw.com](http://www.newmarkmw.com)

# FIRST FLOOR

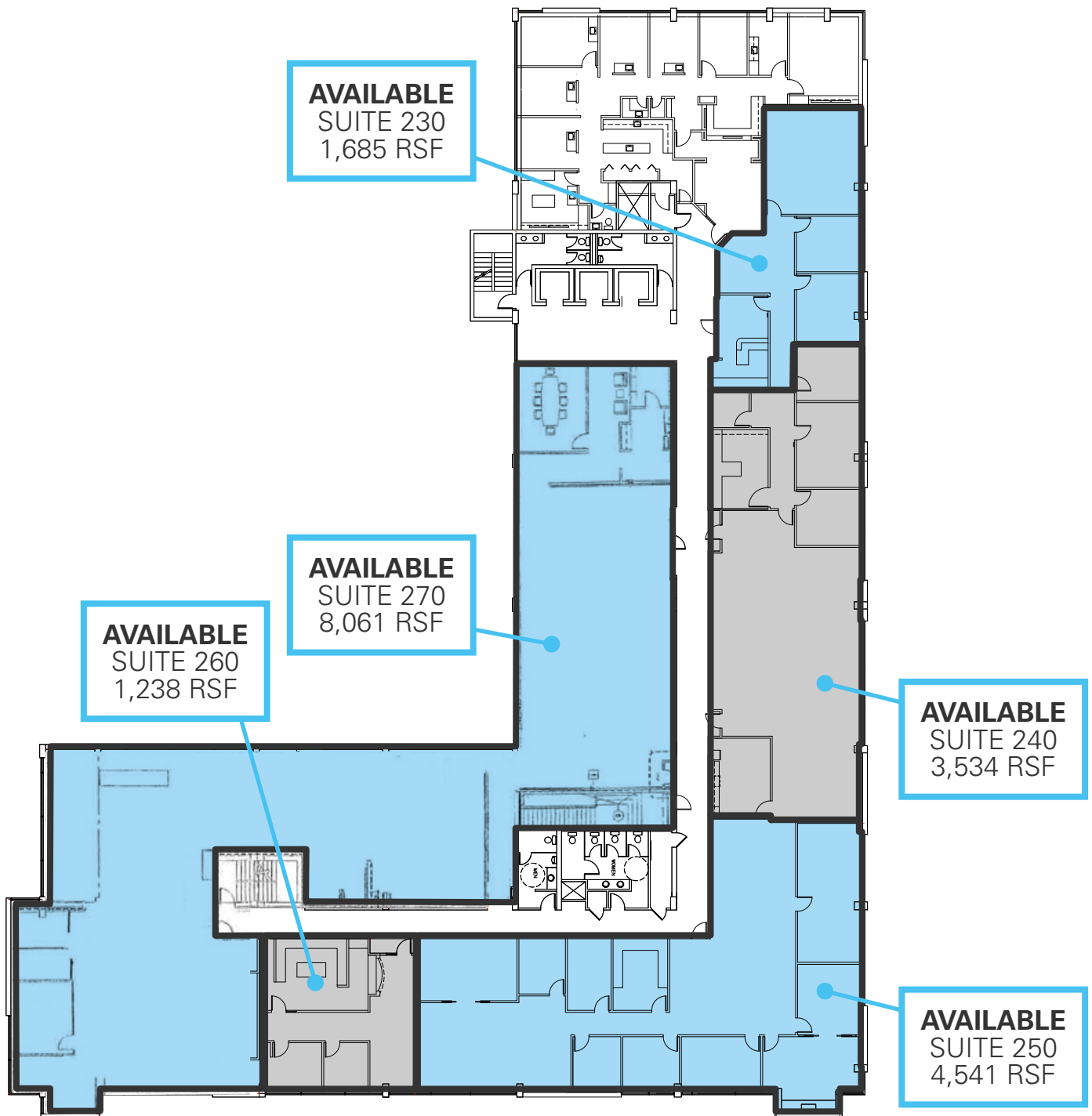


**COLLIN PERKINS**  
cperkins@newmarkmw.com  
direct 801.604.0064  
[View Profile](#)

**SKYE GALLEY**  
sgalley@newmarkmw.com  
direct 801.971.3602  
[View Profile](#)

**FULL SERVICE  
COMMERCIAL REAL ESTATE**  
312 East South Temple  
Salt Lake City, Utah 84111  
Office 801.456.8800  
[www.newmarkmw.com](http://www.newmarkmw.com)

# SECOND FLOOR

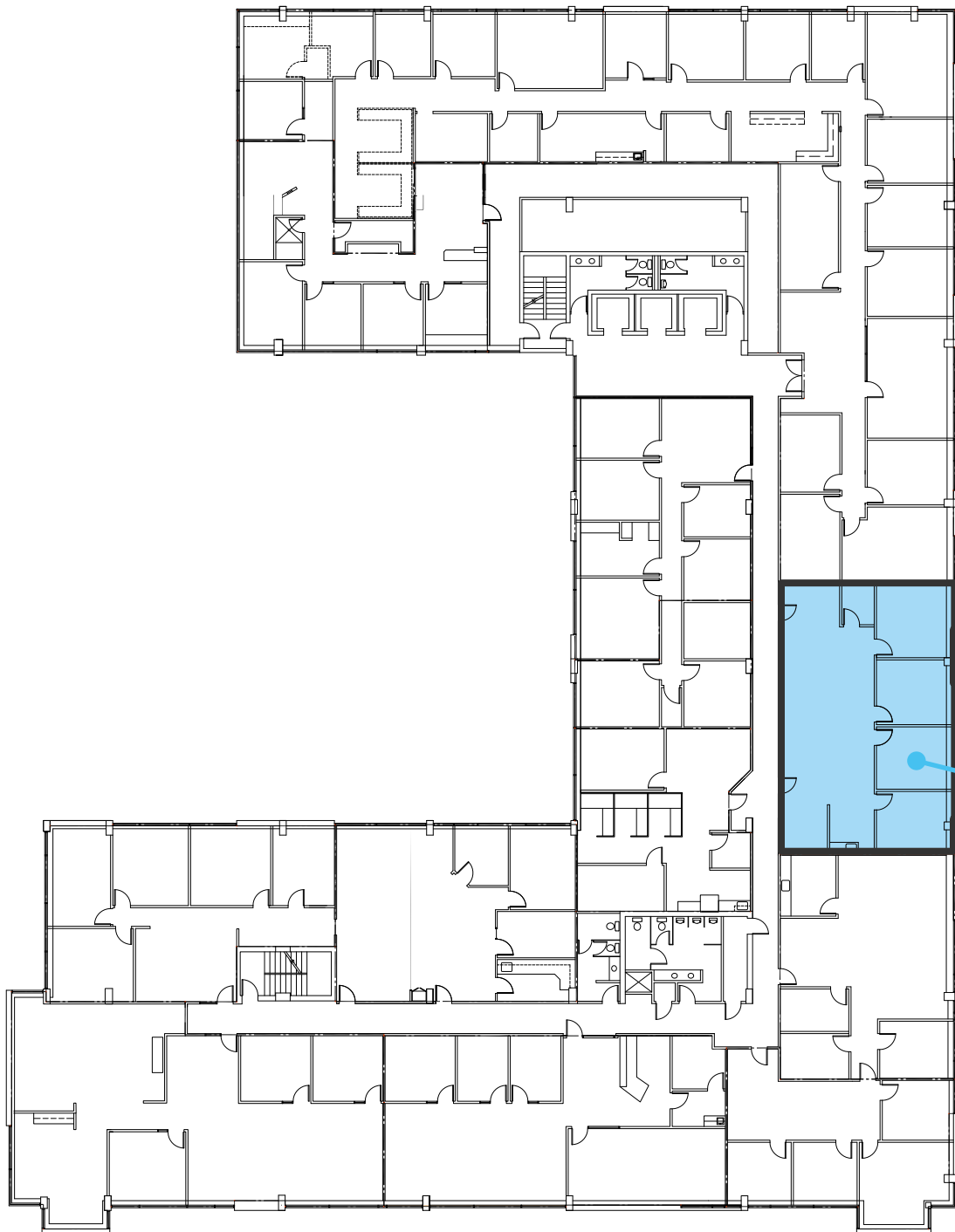


**COLLIN PERKINS**  
cperkins@newmarkmw.com  
direct 801.604.0064  
[View Profile](#)

**SKYE GALLEY**  
sgalley@newmarkmw.com  
direct 801.971.3602  
[View Profile](#)

**FULL SERVICE  
COMMERCIAL REAL ESTATE**  
312 East South Temple  
Salt Lake City, Utah 84111  
Office 801.456.8800  
[www.newmarkmw.com](http://www.newmarkmw.com)

# THIRD FLOOR



**AVAILABLE**  
SUITE 310  
1,969 RSF



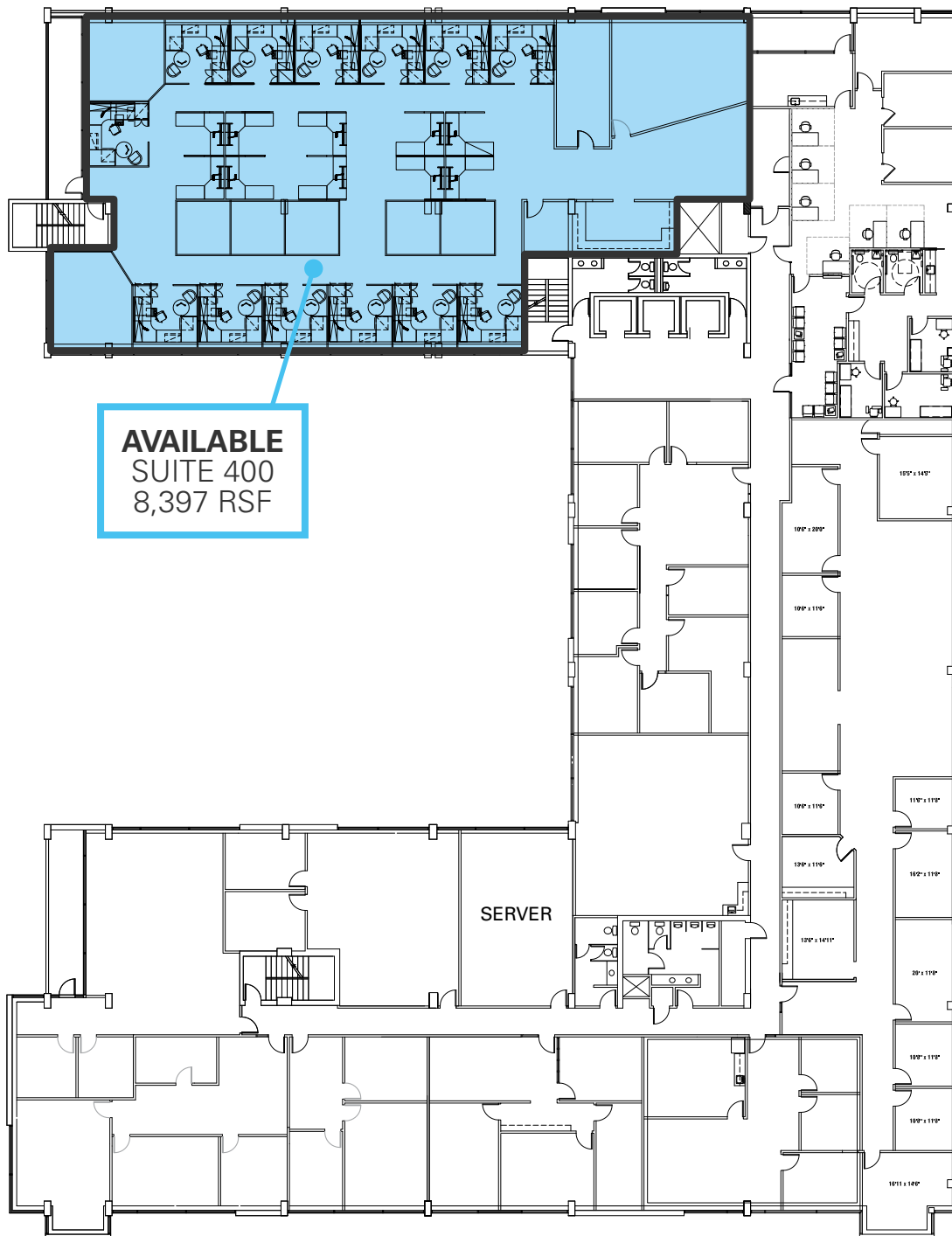
**COLLIN PERKINS**  
cperkins@newmarkmw.com  
direct 801.604.0064  
[View Profile](#)

**SKYE GALLEY**  
sgalley@newmarkmw.com  
direct 801.971.3602  
[View Profile](#)

**FULL SERVICE  
COMMERCIAL REAL ESTATE**  
312 East South Temple  
Salt Lake City, Utah 84111  
Office 801.456.8800  
[www.newmarkmw.com](http://www.newmarkmw.com)



# FOURTH FLOOR



**AVAILABLE**  
SUITE 400  
8,397 RSF

SERVER

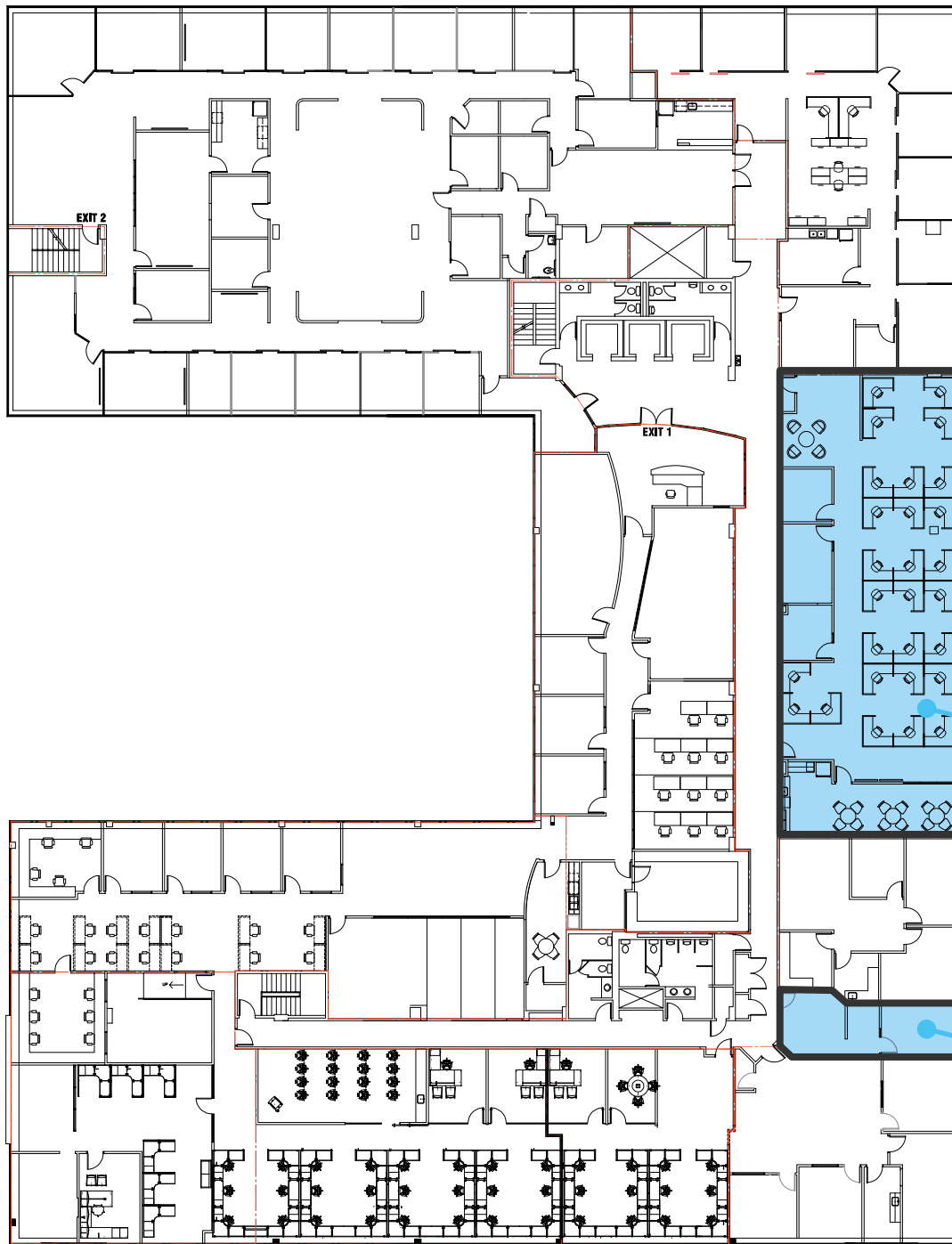


**COLLIN PERKINS**  
cperkins@newmarkmw.com  
direct 801.604.0064  
[View Profile](#)

**SKYE GALLEY**  
sgalley@newmarkmw.com  
direct 801.971.3602  
[View Profile](#)

**FULL SERVICE  
COMMERCIAL REAL ESTATE**  
312 East South Temple  
Salt Lake City, Utah 84111  
Office 801.456.8800  
[www.newmarkmw.com](http://www.newmarkmw.com)

# FIFTH FLOOR



**AVAILABLE**  
SUITE 500  
4,031 RSF

**AVAILABLE**  
SUITE 540  
462 RSF

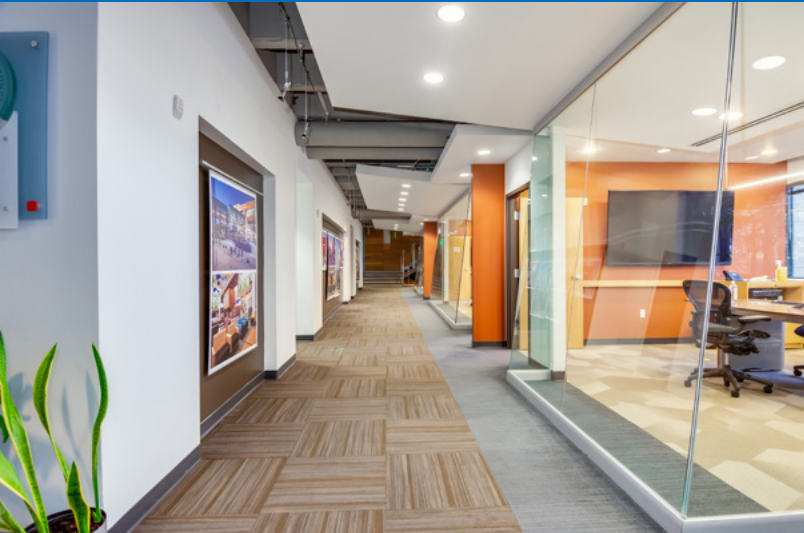


**COLLIN PERKINS**  
cperkins@newmarkmw.com  
direct 801.604.0064  
[View Profile](#)

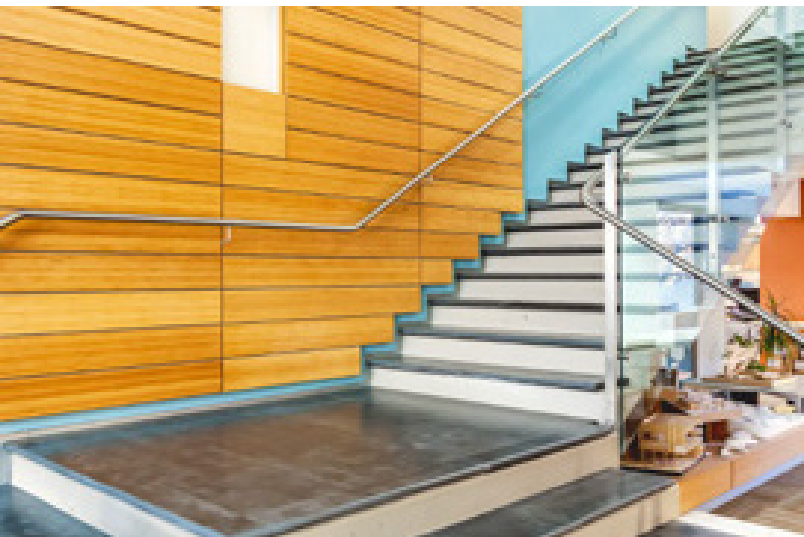
**SKYE GALLEY**  
sgalley@newmarkmw.com  
direct 801.971.3602  
[View Profile](#)

**FULL SERVICE  
COMMERCIAL REAL ESTATE**  
312 East South Temple  
Salt Lake City, Utah 84111  
Office 801.456.8800  
[www.newmarkmw.com](http://www.newmarkmw.com)

# 420 EAST SOUTH TEMPLE



| SUITE 100



**NEWMARK**  
MOUNTAIN WEST

**COLLIN PERKINS**  
cperkins@newmarkmw.com  
direct 801.604.0064  
[View Profile](#)

**SKYE GALLEY**  
sgalley@newmarkmw.com  
direct 801.971.3602  
[View Profile](#)

**FULL SERVICE  
COMMERCIAL REAL ESTATE**  
312 East South Temple  
Salt Lake City, Utah 84111  
Office 801.456.8800  
[www.newmarkmw.com](http://www.newmarkmw.com)



# 420 EAST SOUTH TEMPLE



**SUITE 560**  
FORMER NETWORK  
OPERATIONS CENTER (NOC)

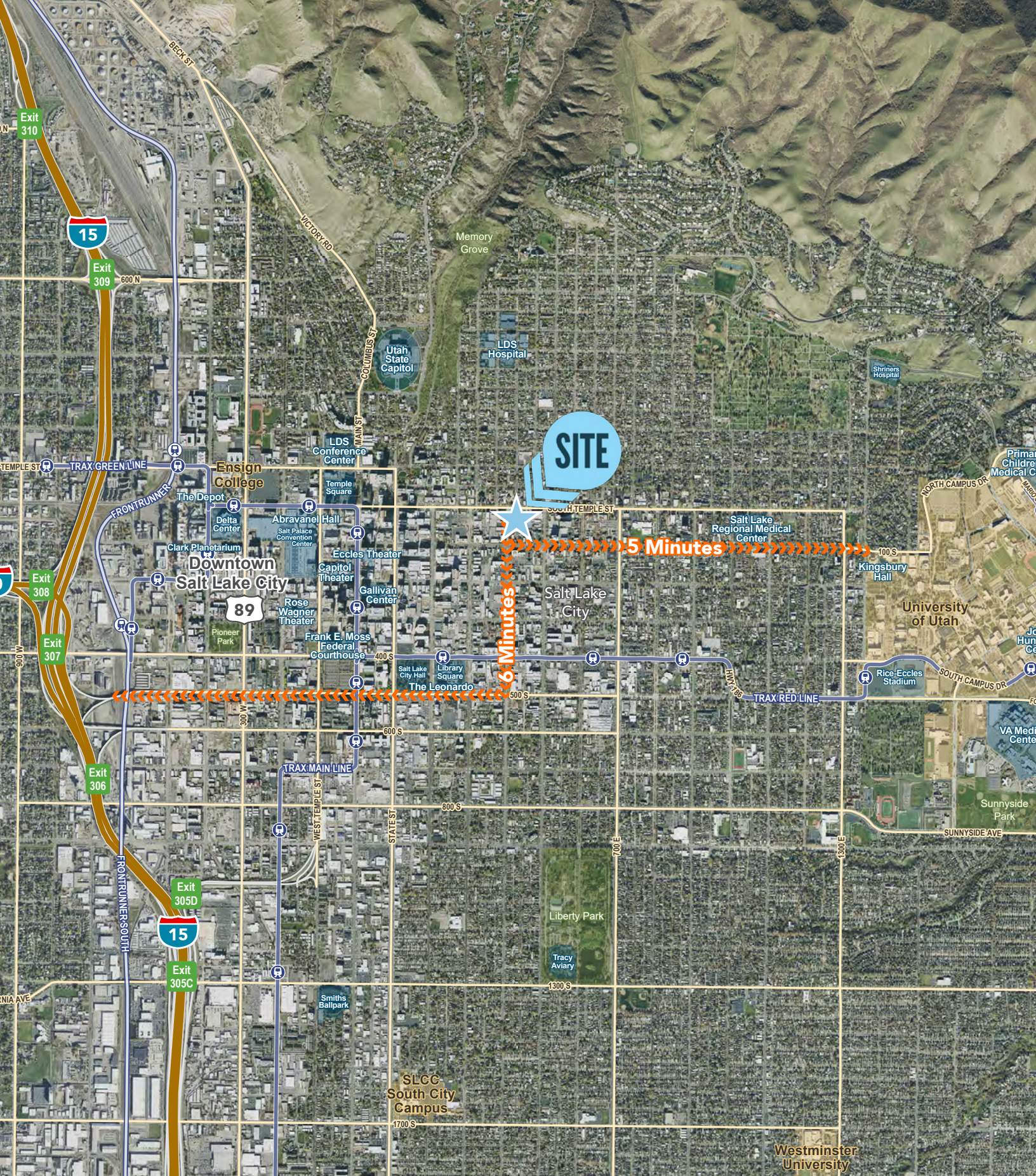


**COLLIN PERKINS**  
cperkins@newmarkmw.com  
direct 801.604.0064  
[View Profile](#)

**SKYE GALLEY**  
sgalley@newmarkmw.com  
direct 801.971.3602  
[View Profile](#)

**FULL SERVICE  
COMMERCIAL REAL ESTATE**  
312 East South Temple  
Salt Lake City, Utah 84111  
Office 801.456.8800  
[www.newmarkmw.com](http://www.newmarkmw.com)





**COLLIN PERKINS**  
cperkins@newmarkmw.com  
direct 801.604.0064  
[View Profile](#)

**SKYE GALLEY**  
sgalley@newmarkmw.com  
direct 801.971.3602  
[View Profile](#)

**FULL SERVICE  
COMMERCIAL REAL ESTATE**  
312 East South Temple  
Salt Lake City, Utah 84111  
Office 801.456.8800  
[www.newmarkmw.com](http://www.newmarkmw.com)