



**For Sale/Lease**

## Center Street Retail 504 E. Center | Pocatello, ID

*Colliers Portneuf Valley is pleased to represent a hard corner retail space with great visibility for Lease or Sale in the heart of downtown Pocatello, ID on 4th and Center Streets. The building is located on major arterials adjacent to Jack in the Box, within one block of Bannock County Courthouse, six blocks from Idaho State University on a hard corner. There is excellent visibility, and perfect for an owner/user.*

### Highlights

- Hard corner signalized intersection
- 2,700 SF of open space (full basement 1,740 SF)
- Centrally located in Court House District
- 6 Blocks to Idaho State University

### Property Information

Property Type	Retail
Building Size	4,440 SF
Land Size	30x120
Lease Type	NNN
Parking	2 Off Street
Access	Contact Agent

**Sale price:**

**\$250,000**

**Lease price:**

**Contact Agent**

**Contact us:**

**Jared Zebe**

208 709 7311  
jared.zebe@colliers.com

**Mike Zebe**

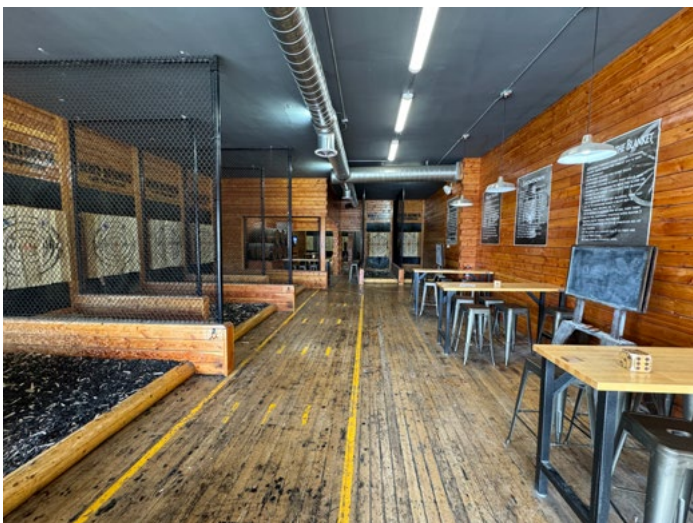
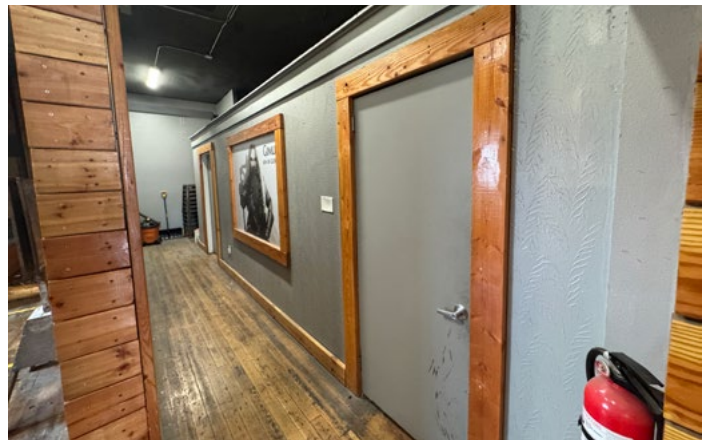
208 705 6453  
mike.zebe@colliers.com

**Don Zebe**

208 403 1973  
don.zebe@colliers.com



# Property Photos





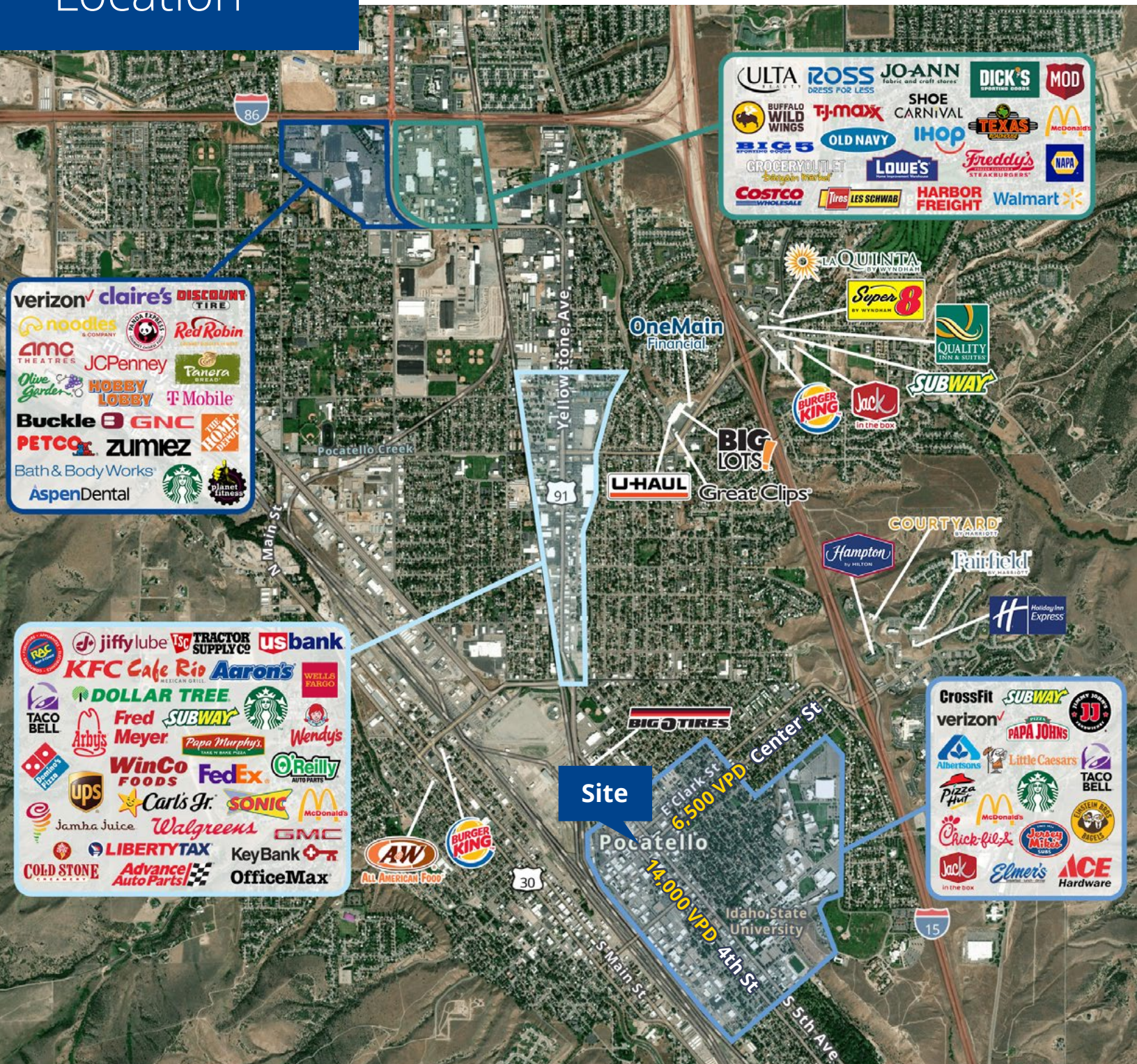
# Location



Google Map



Street View



Site

Pocatello

Idaho State University

4th St

5th Ave

6,500 VPD

14,000 VPD

Colliers

2043 E Center Street  
Pocatello, Idaho 83201  
208 951 2100  
colliers.com/idaho

Demos	1 Miles	3 Miles	5 Miles
Population	11,630	44,115	75,317
Households	5,146	17,509	28,525
Avg. Income	\$58,914	\$72,361	\$81,552