



**3265 Meridian Parkway  
Weston, FL 33331**

## Meridian Business Campus of Weston



Located within Meridian Business Campus, 3265 Meridian Parkway offers image conscious businesses on attractive and flexible multi-use facility. The single story building provides a creative alternative to companies needing both office and distribution space. In keeping with the high standards of Meridian Business Campus, impressive landscaping enhances the convenient, lake-front property.



# Flex Space Available For Lease

### For Further Information, Contact:

**Timothy J. Talbot**  
954.385.0000  
[ttalbot@comreal.com](mailto:ttalbot@comreal.com)

### Property Features Include:

- Suite 112 - 6,599 SF Office/Warehouse
- Class B; 41,295 SF Flex Building
- 14' Clear Ceiling Height
- Ample Parking Available
- Individually Metered & Controlled Air Conditioning in Office Areas
- Conveniently located off I-75, South of I-595, and the Sawgrass Expressway
- Close Proximity to Restaurants, Banks, and Retail Establishments
- 20 Minutes to Fort Lauderdale-Hollywood International Airport

# Meridian Business Campus

3265 Meridian Parkway, Weston, FL 33331

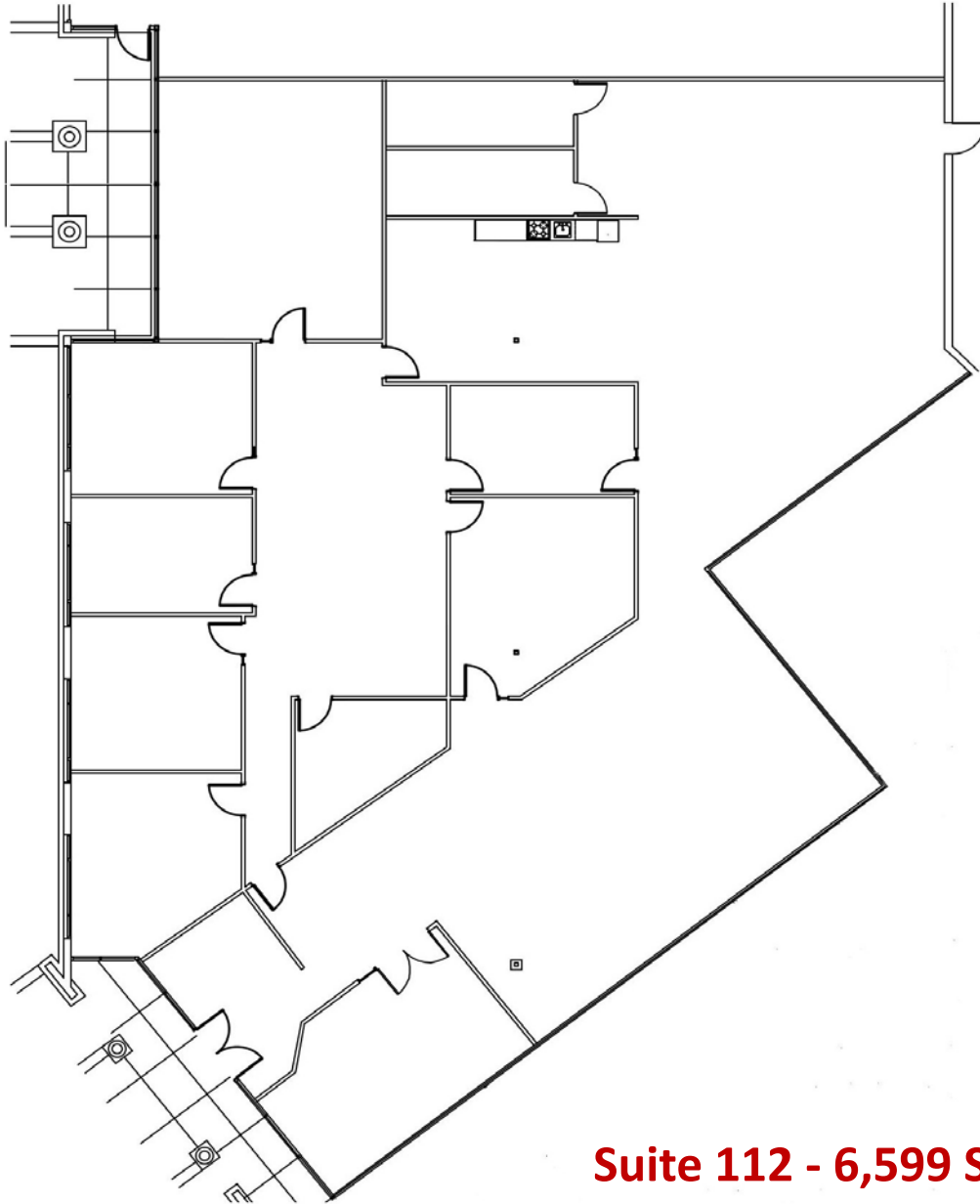


[View Property Video](#)



# Meridian Business Campus

3265 Meridian Parkway, Weston, FL 33331



**Suite 112 - 6,599 SF**

FOR LEASING INFORMATION:

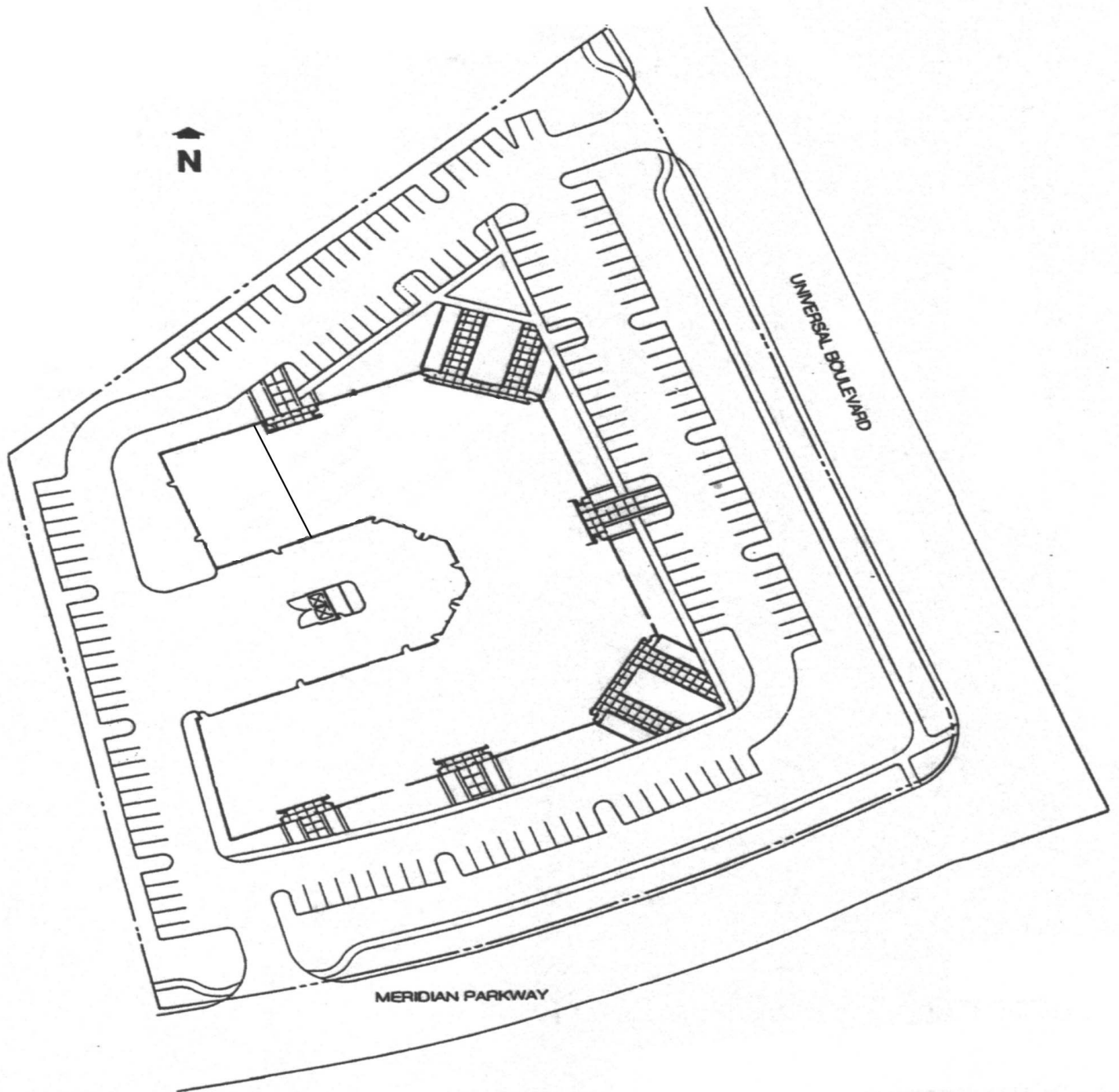
Timothy J. Talbot | [ttalbot@comreal.com](mailto:ttalbot@comreal.com)

**954.385.0000**



# Site Plan

3265 Meridian Parkway



*For Further Information, Contact:*



[www.comrealfortlauderdale.com](http://www.comrealfortlauderdale.com)

**Timothy J. Talbot**  
954.385.0000  
[ttalbot@comreal.com](mailto:ttalbot@comreal.com)