

**FOR  
LEASE**

GREAT LOCATION

# Libbie Square

1801 & 1807 Libbie Avenue | Richmond, VA 23226



**COMMONWEALTH  
COMMERCIAL**  
Comprehensive Property Solutions



## PROPERTY HIGHLIGHTS

- › One suite available  
3,646± SF second floor
- › Great location with frontage on Libbie Avenue
- › Easy access to I-64 and Broad Street
- › Ample surface lot parking with a parking ratio of 4.5/1,000 SF
- › Numerous nearby amenities at Willow Lawn including Cava, Starbucks, Chopt Salad Co, Panera Bread & many more!
- › **LEASE RATE: \$21.00/SF, FULL SERVICE**

## FOR MORE INFORMATION:

### ROBBIE BERNDT

Senior Associate

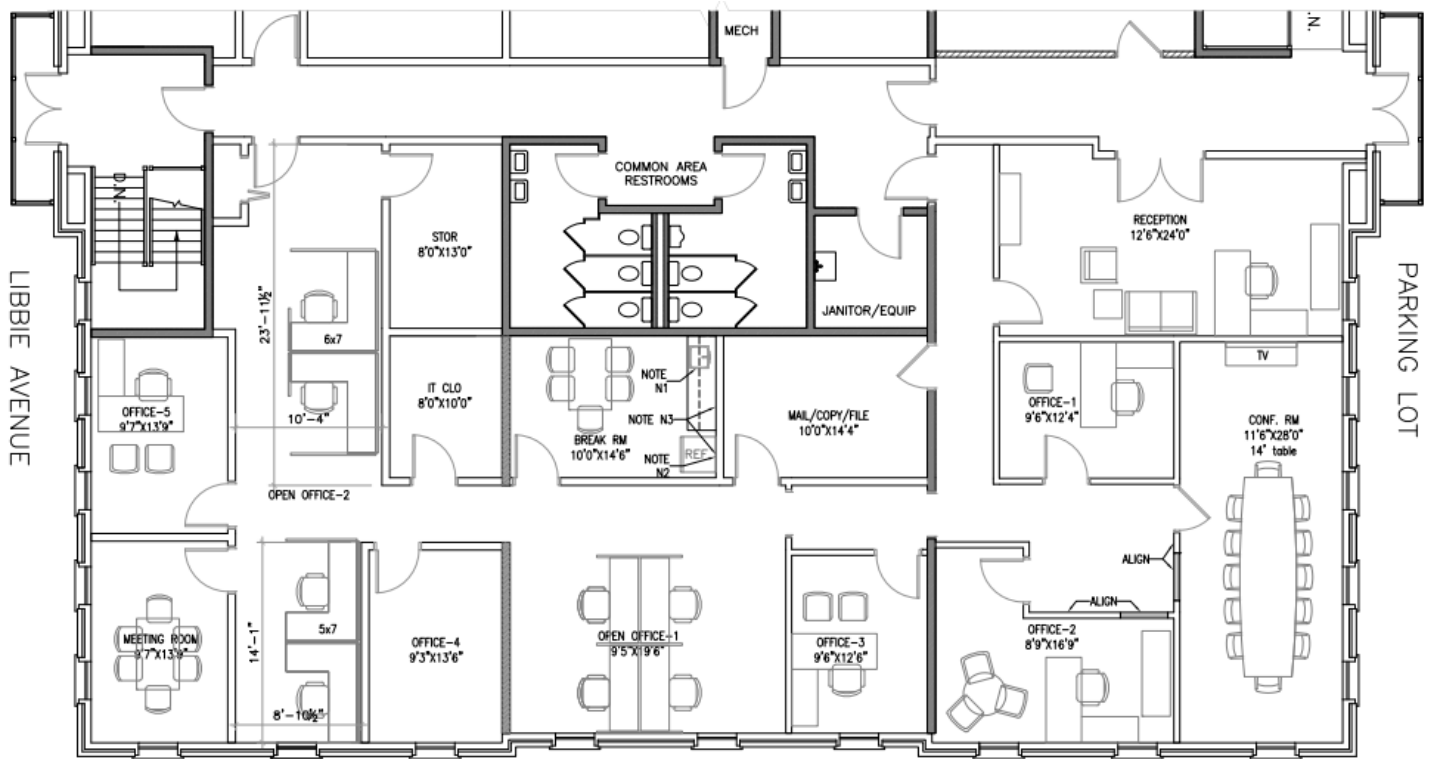
804-968-1151

[rberndt@commonwealthcommercial.com](mailto:rberndt@commonwealthcommercial.com)

Commonwealth Commercial Partners, LLC represents the Landlord of this property. Information contained herein is deemed reliable but is not guaranteed.

# FLOOR PLANS

Second Floor  
SUITE 203  
3,646± SF



# RETAIL MAP

DEMOGRAPHICS	1 MILE	3 MILE	5 MILE
TOTAL POPULATION	10,214	85,733	249,483
AVERAGE HH INCOME	\$116,651	\$105,307	\$91,172
DAYTIME EMPLOYMENT	18,049	78,751	211,361



**WILLOW LAWN RESTAURANTS & RETAIL**

FOR LEASE | 1801 & 1807 LIBBIE AVENUE | RICHMOND, VA 23226