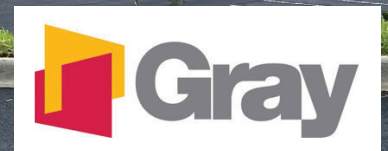


# Gray Industrial Center

406 Logistics Drive, Shelbyville, KY

[www.cbre.com/louisville](http://www.cbre.com/louisville)

Building 1: 283,500+/- SF | Ready for Occupancy!



## Property Highlights

- Building 1: 283,500+/- SF
- Building 1 spec office: 2,700+/- SF
- Building 3: Up to 650,000\*+/- SF
- 36' clear height
- ESFR sprinkler system
- LED lighting
- 22.2 miles to Ford KTP
- 30.8 miles to Louisville International Airport
- 31.6 miles to UPS Worldport
- 32.3 miles to Ford LAP
- 47 miles to Lexington
- 49 miles to Toyota-Georgetown
- Contact agent for pricing

## Contact Us

**Doug Butcher, SIOR**  
Executive Vice President  
+1 502 412 7641  
[doug.butcher@cbre.com](mailto:doug.butcher@cbre.com)

**Alex P. Grove**  
Senior Associate  
+1 502 412 7655  
[alex.grove@cbre.com](mailto:alex.grove@cbre.com)

*\*Proposed building sizes are conceptual and flexibility in size and building design is available.*

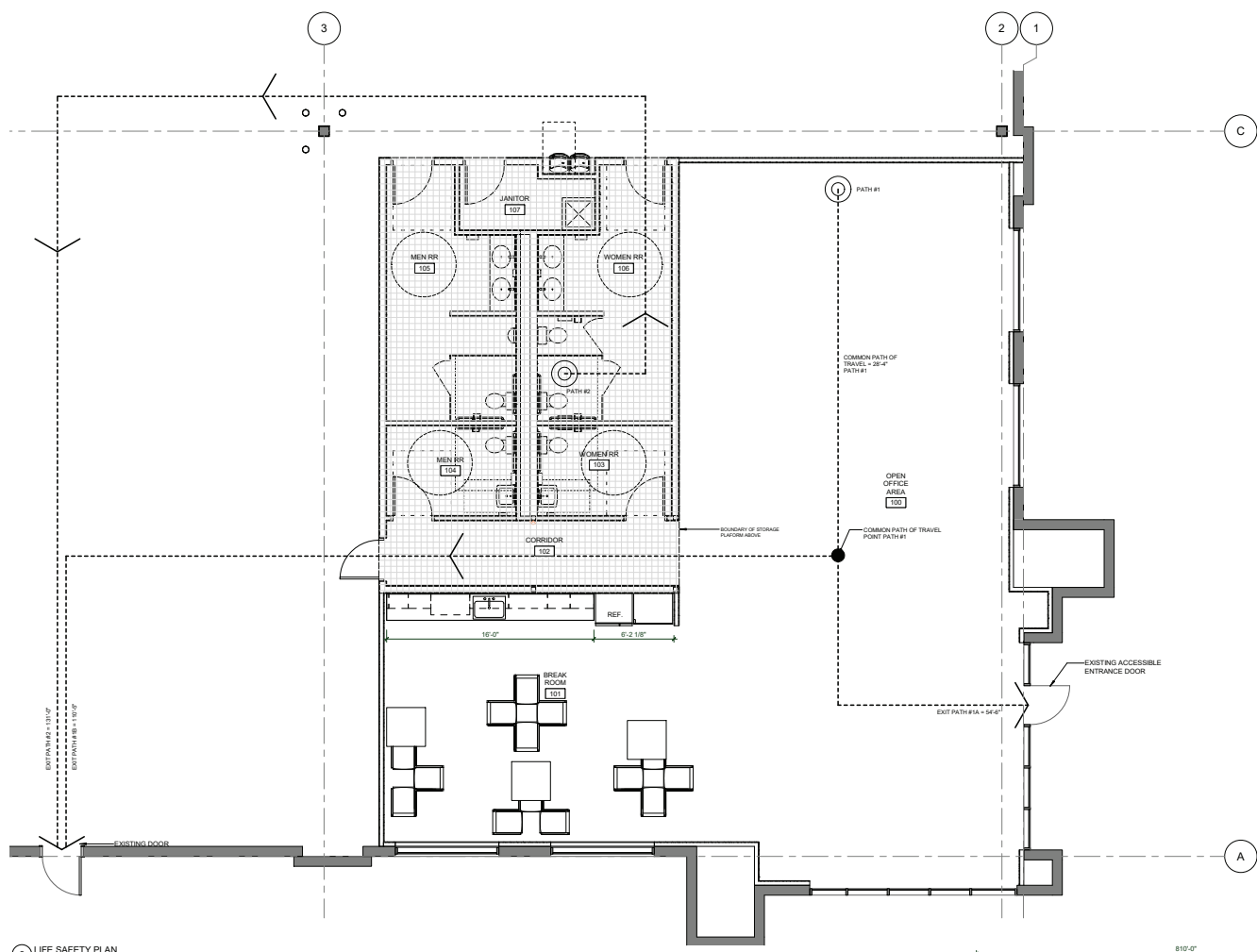
## Gray Industrial Center

Shelbyville, KY

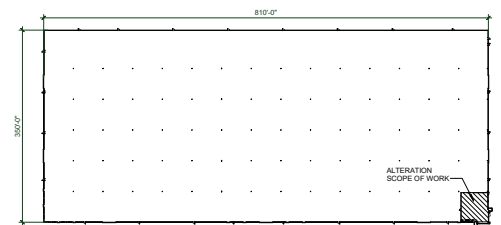
### BUILDING 1 SPECS

Available Space	283,500+/- square feet
Office Area	2,700+/-
Construction Type	Insulated pre-cast
Clear Height	36'
Fire Suppression	ESFR
Dock Doors	(29) 9' X 10' with 35,000 lb levelers and seals (expandable to 50)
Drive-In Doors	(2) 14' X 16'
Column Spacing	50' X 54'
Speed Bay	60'
Lighting	LED
HVAC	60 degrees at 0 outside 2 air changes per hour
Roof	60 MM TPO with 20 year warranty
Truck Court	140'
Car Parking	191 spaces
Trailer Parking	57 spaces
Slab	7" unreinforced concrete slab
Zoning	I-1

SPEC OFFICE (2,700+/-SF)



2 LIFE SAFETY PLAN  
1/8" = 1'-0"



1 KEY PLAN  
1" = 100'-0"



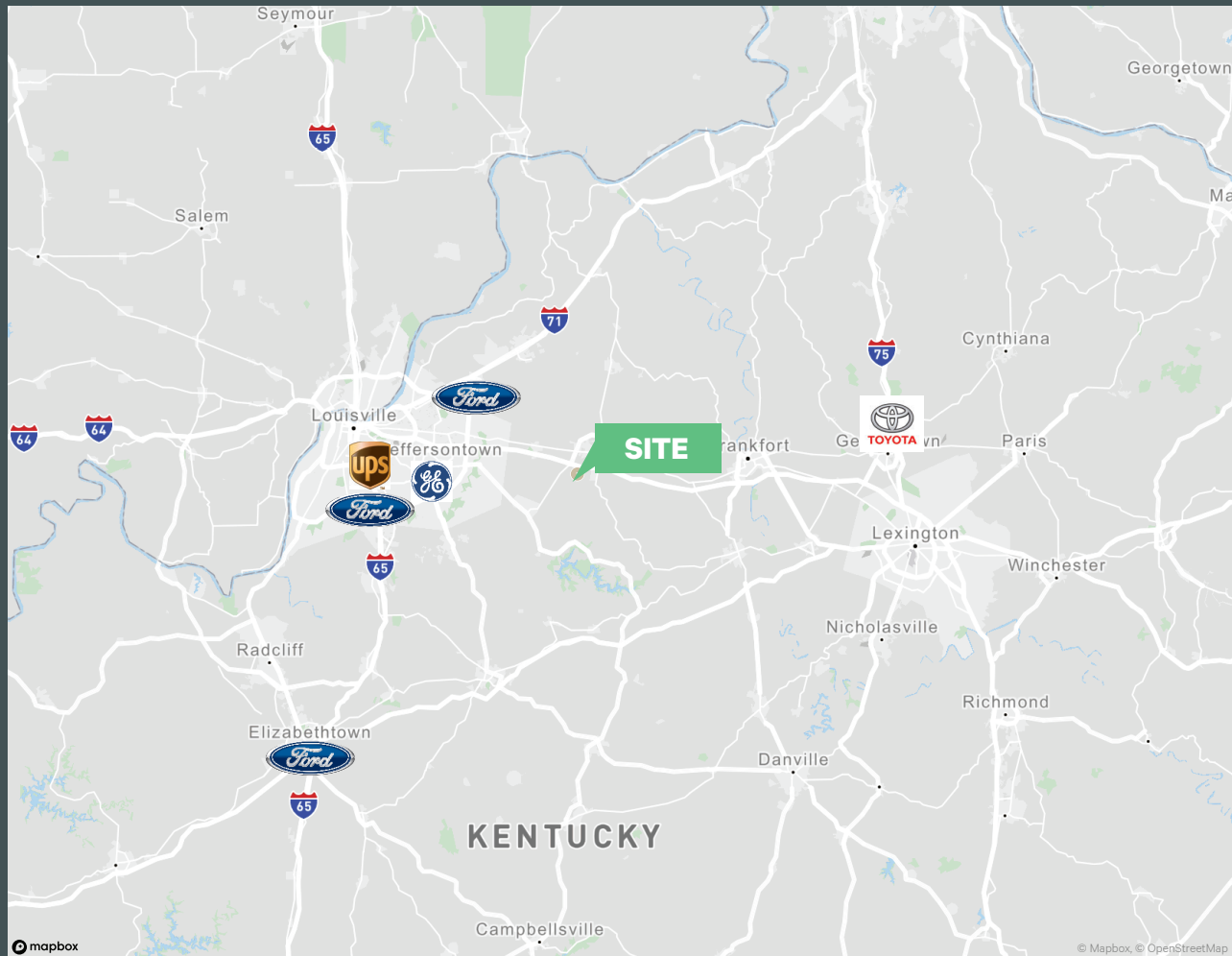
**Building 1**

**283,500+/- SF**

**Building 3**

**Up to 650,000\*+/- SF**

*\*Proposed building sizes are conceptual and flexibility in size and building design is available.*



Gray is a top 100 U.S. engineering, architecture and construction firm that consistently ranks among the top 15 in the manufacturing, automotive, distribution and food and beverage markets. The firm's knowledge and proven experience in the industrial landscape is unparalleled. Founded in 1960, Gray is a family-owned company headquartered in Lexington, KY with offices across the U.S. and Japan. For more information please visit: [www.gray.com](http://www.gray.com)

## Contact Us

**Doug Butcher, SIOR**  
Executive Vice President  
+1 502 412 7641  
[doug.butcher@cbre.com](mailto:doug.butcher@cbre.com)

**Alex P. Grove**  
Senior Associate  
+1 502 412 7655  
[alex.grove@cbre.com](mailto:alex.grove@cbre.com)

© 2022 CBRE, Inc. All rights reserved. This information has been obtained from sources believed reliable, but has not been verified for accuracy or completeness. You should conduct a careful, independent investigation of the property and verify all information. Any reliance on this information is solely at your own risk. CBRE and the CBRE logo are service marks of CBRE, Inc. All other marks displayed on this document are the property of their respective owners, and the use of such logos does not imply any affiliation with or endorsement of CBRE. Photos herein are the property of their respective owners. Use of these images without the express written consent of the owner is prohibited.