

## PROPERTY DETAILS

- Office condo available for sale multi-tenant office/retail center
- Second generation, built-out office for sale
- 1/4 mile from I-95
- 1/2 mile from the Beeline Hwy. (SR 710)
- In the Super 8 Shoppes, a mixed-use, office/retail center
- Center is fully occupied
- Recent interior renovations
- Can potentially expand into adjacent suite
- Frontage on Blue Heron Blvd.
- Space is move-in ready!

## ABOUT PROPERTY



### PRICE

\$542,000 (\$283.62/SF)



### YEAR BUILT

1985



### AVAILABLE SPACE

1,911 SF



### PARKING

Shared Surface Lot



### LOCATION

Riviera Beach, 1/2 mile from I-95

For more information:

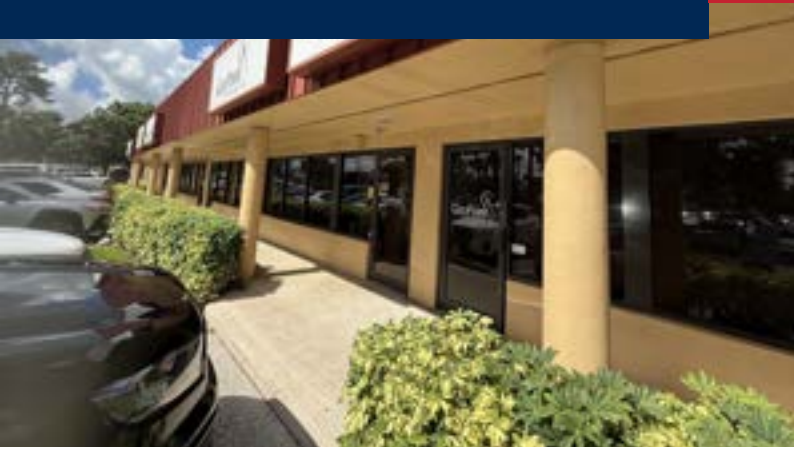
**Daniel Silver**

561.510.2124 | [dsilver@Bergercommercial.Com](mailto:dsilver@Bergercommercial.Com)  
[bergercommercial.com](http://bergercommercial.com)

**Michael Feuerman, Esq., CCIM, SIOR**

561.430.2303 | [Mfeuerman@Bergercommercial.Com](mailto:Mfeuerman@Bergercommercial.Com)





For more information:

**Daniel Silver**

561.510.2124 | [dsilver@Bergercommercial.Com](mailto:dsilver@Bergercommercial.Com)  
[bergercommercial.com](http://bergercommercial.com)

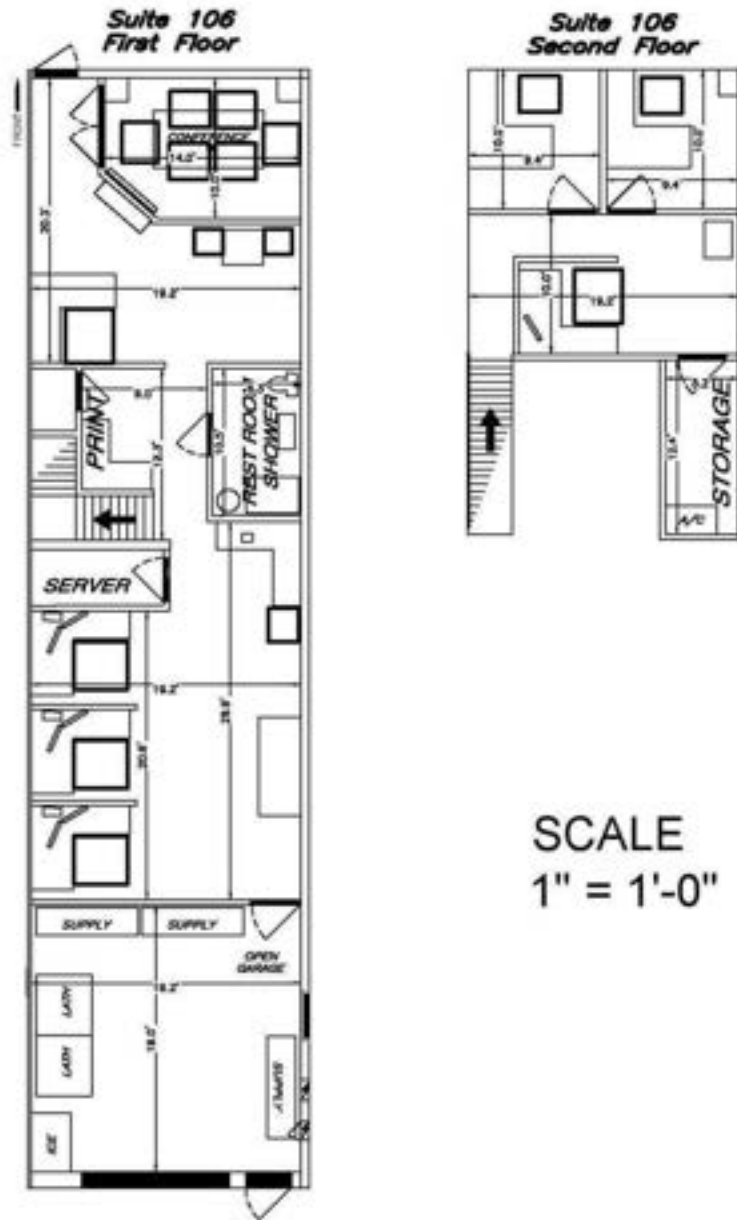
**Michael Feuerman, Esq., CCIM, SIOR**

561.430.2303 | [Mfeuerman@Bergercommercial.Com](mailto:Mfeuerman@Bergercommercial.Com)



**CVRFAC**  
International

COMMERCIAL BROKERAGE AND PROPERTY MANAGEMENT



For more information:

**Daniel Silver**

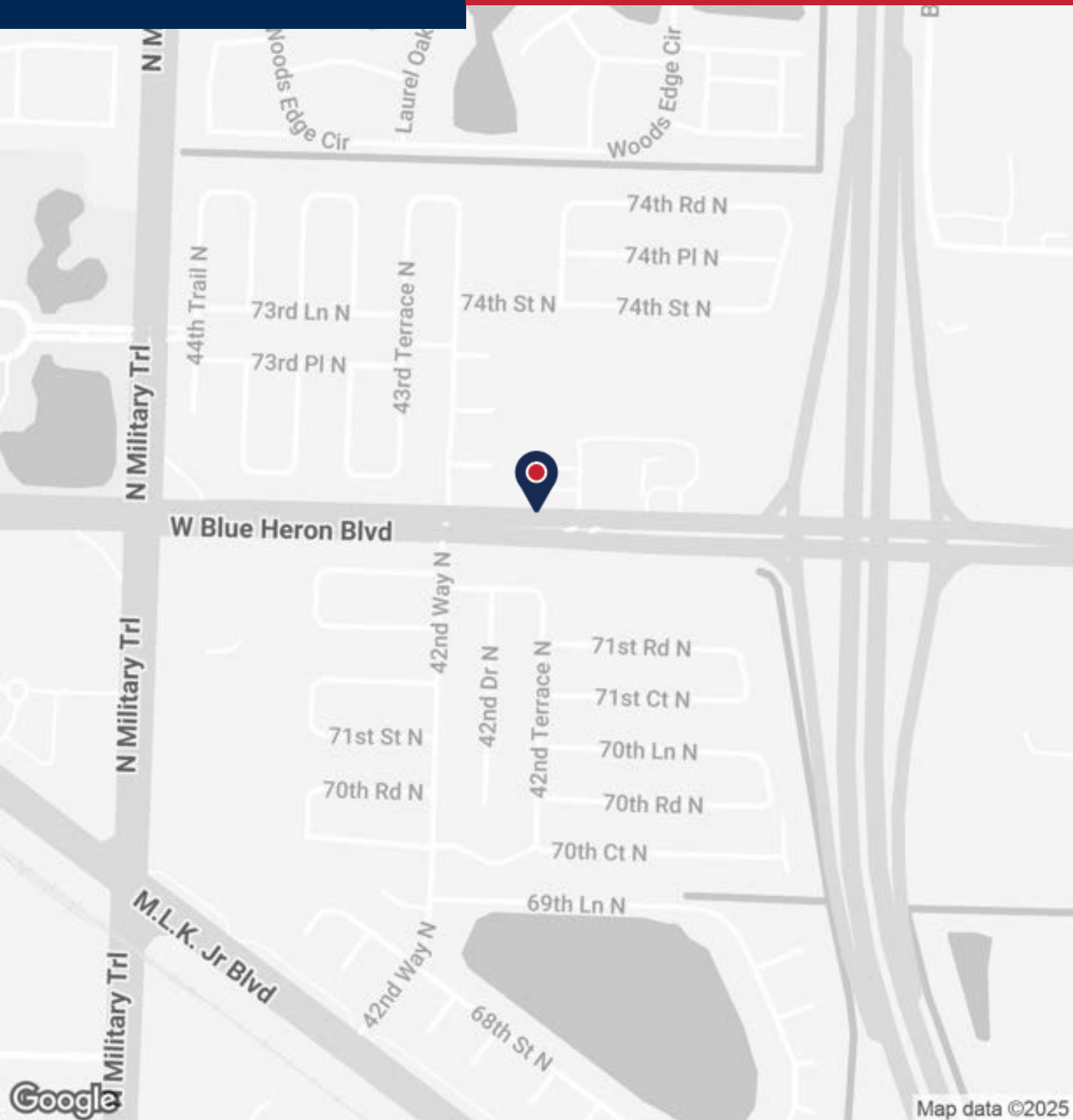
561.510.2124 | [dsilver@Bergercommercial.Com](mailto:dsilver@Bergercommercial.Com)  
bergercommercial.com

**Michael Feuerman, Esq., CCIM, SIOR**

561.430.2303 | [Mfeuerman@Bergercommercial.Com](mailto:Mfeuerman@Bergercommercial.Com)







For more information:

**Daniel Silver**

561.510.2124 | [dsilver@Bergercommercial.Com](mailto:dsilver@Bergercommercial.Com)  
[bergercommercial.com](http://bergercommercial.com)

**Michael Feuerman, Esq., CCIM, SIOR**

561.430.2303 | [Mfeuerman@Bergercommercial.Com](mailto:Mfeuerman@Bergercommercial.Com)

