

13390 Capital Street

Oak Park, MI

9,000 SF Available on 1.13 Acres



Contact Us

Jake Ginster

Associate
+1 248 633 6119
jake.ginster@cbre.com

Charles M. Ginster

Senior Vice President
+1 248 760 2439
chuck.ginster@cbre.com

Joe Kemp

Senior Associate
+1 248 404 7257
joe.kemp@cbre.com

9,000 SF AVAILABLE

13390 Capital Street, Oak Park, MI

For Lease

Aerial



Comments

- Close Proximity to I-696, M-10, and Southfield Freeway
- Rare Freestanding Industrial Building Located off Coolidge Hwy & Capital St
- Heavy Power, Clear Span Warehouse, and Five (5) Ton Crane Available
- Fenced, Gated, and Secured Lot

9,000 SF AVAILABLE

13390 Capital Street, Oak Park, MI

For Lease

Photos



9,000 SF AVAILABLE

13390 Capital Street, Oak Park, MI

For Lease

Property Features

9,000

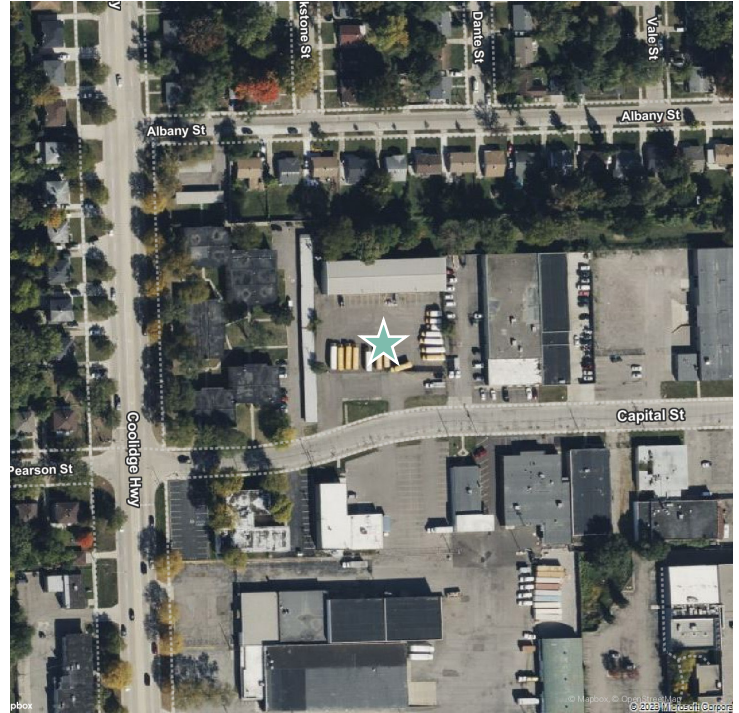
Square Footage

1.13

Acreage

\$8.00/NNN

Lease Rate



Year Built	1959/ Renovated 1986	Electrical Power	Heavy
Total Available	9,000 SF	Parking	50 Free Surface
Zoning	(IF) Industrial Flex	HVAC	Office
Acres	1.13 Acres	Truckwells	None
Construction	Masonry	Grade Level Doors	Two (2)
Crane	5-Ton Overhead Crane	Frontage	200' off Capital St
Ceiling Height	21'10" Side Truss 23'3" Center Truss	Lease Rate	\$8.00/NNN

Contact Us

Jake Ginster

Associate

+1 248 633 6119

jake.ginster@cbre.com

Charles M. Ginster

Senior Vice President

+1 248 760 2439

chuck.ginster@cbre.com

Joe Kemp

Senior Associate

+1 248 404 7257

joe.kemp@cbre.com

© 2024 CBRE, Inc. All rights reserved. This information has been obtained from sources believed reliable but has not been verified for accuracy or completeness. CBRE, Inc. makes no guarantee, representation or warranty and accepts no responsibility or liability as to the accuracy, completeness, or reliability of the information contained herein. You should conduct a careful, independent investigation of the property and verify all information. Any reliance on this information is solely at your own risk.

www.cbre.com

CBRE