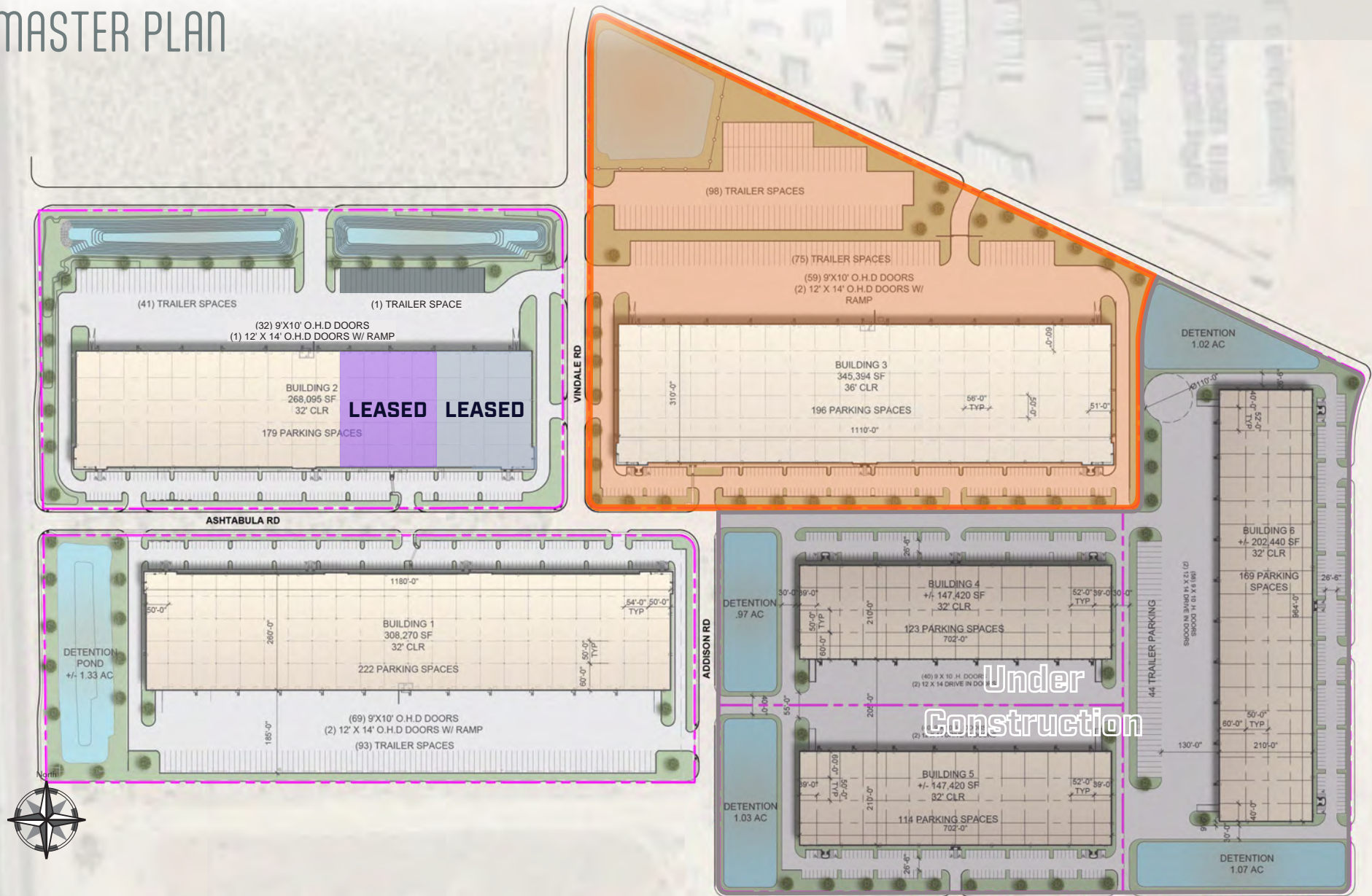




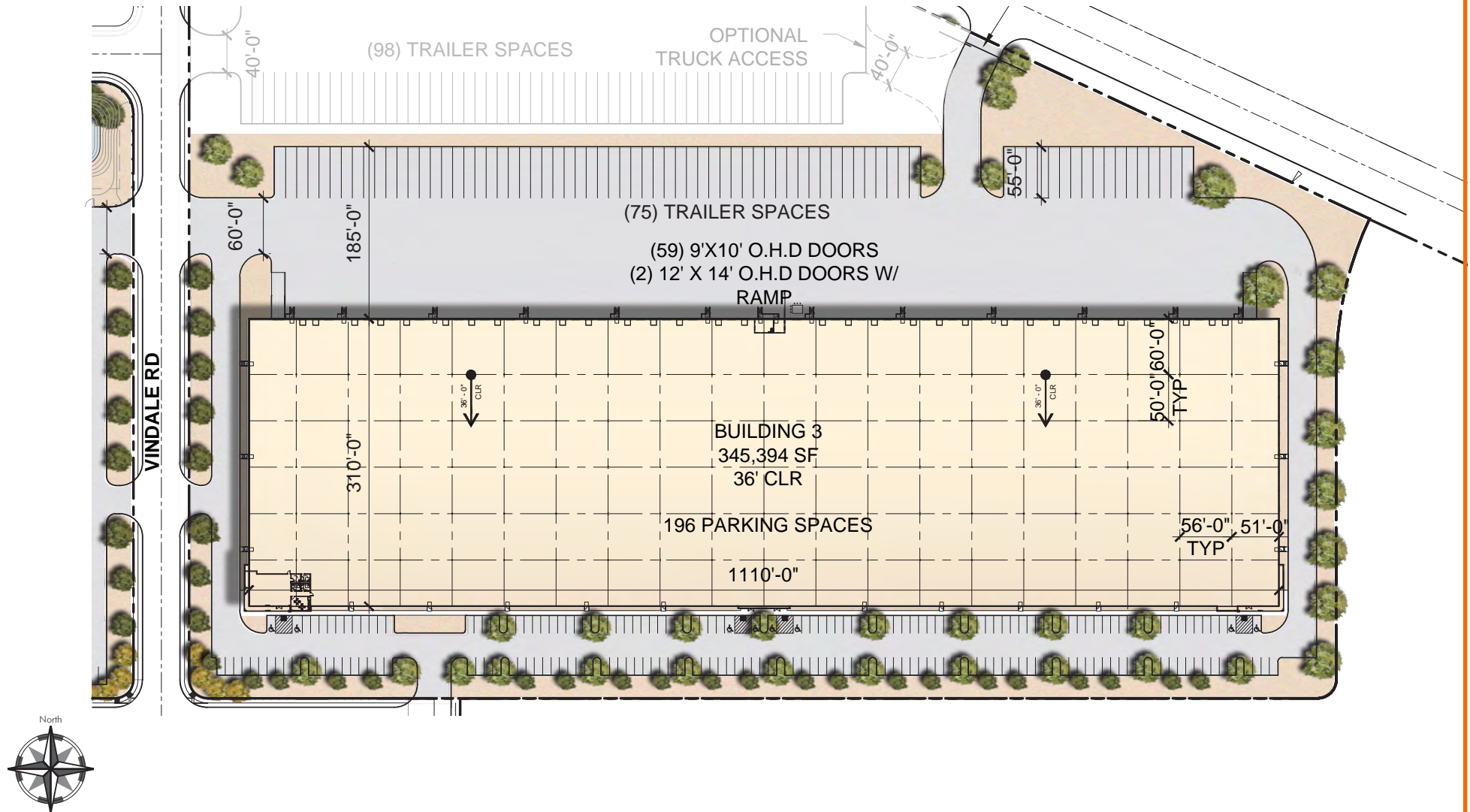
CAMINO REAL LOGISTICS PARK

MASTER PLAN



SITE PLAN

1800 Vindale Road



BUILDING SPECIFICATIONS

1800 Vindale Road

AVAILABLE SIZE:	345,394 sq. ft.
OFFICE SPACE:	2,541 sq. ft. (spec)
BUILDING DEPTH:	310'
COLUMN SPACING:	54' x 50', with 60' speed bays
CLEAR HEIGHT:	36' at first column line
DOCK DOORS:	59 (9' x 10') dock high 2 (12' x 14') drive-in ramps 30 (30,000 lbs) mechanical dock levelers
POWER:	4,000 Amps, 277/480V, 3PH, 4W
FOREIGN-TRADE ZONE (FTZ):	Located in Foreign Trade Zone No. 68
TRUCK COURT:	185'
ROOF:	Roof system - 60 Mil TPO Roof warranty: 20 years
FLOOR:	7" - 4000 PSI reinforced concrete
LIGHTING:	25' FC LED Clerestory, side windows in warehouse
TRAILER PARKING:	75 trailer spaces Expandable to 173
AUTO PARKING:	184 auto spaces
SPRINKLER:	ESFR



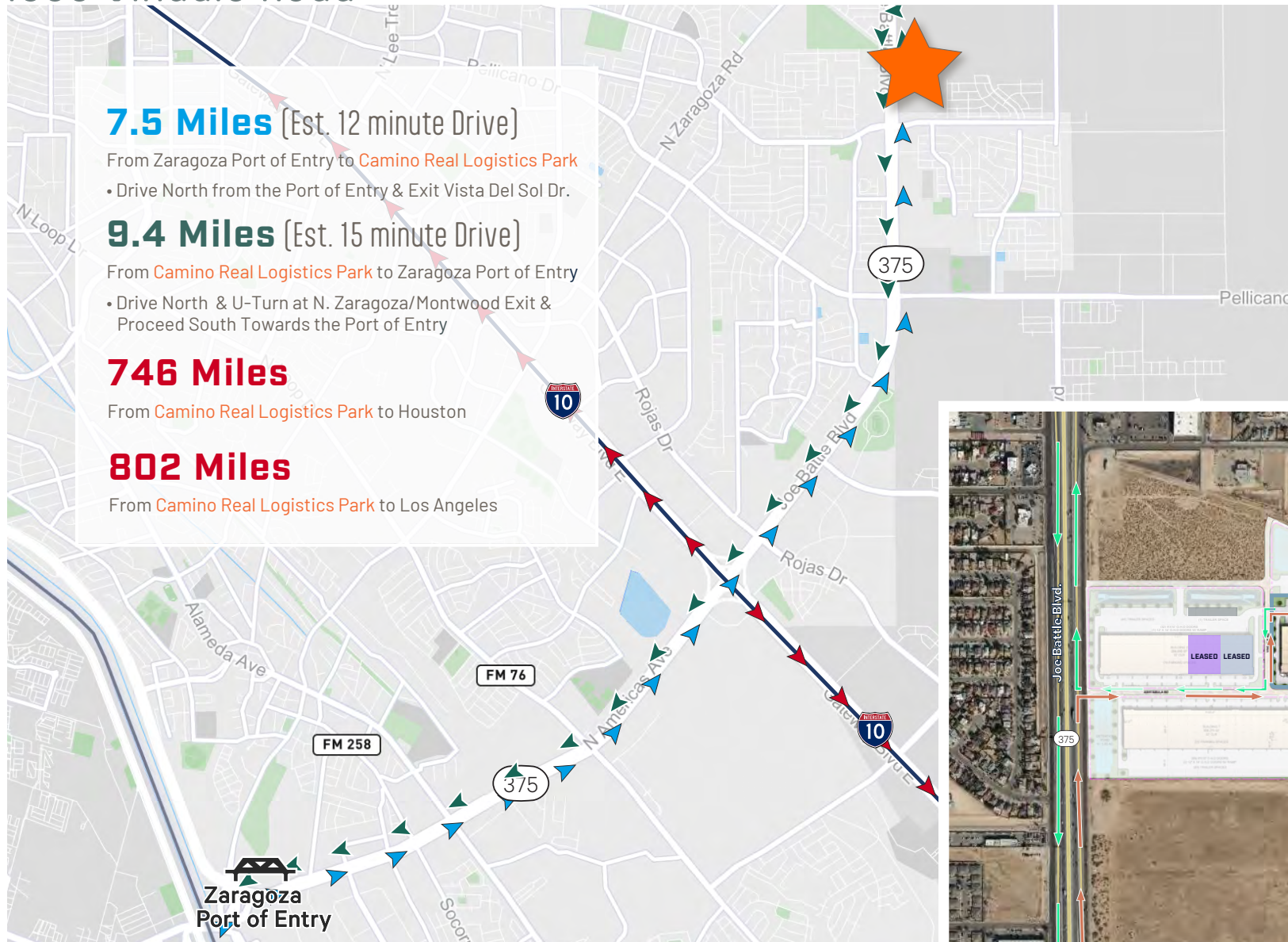
PROPERTY PHOTOS

1800 Vindale Road



INGRESS / EGRESS MAP

1800 Vindale Road



REGIONAL INFORMATION

PROJECT OVERVIEW

- Phase I (Buildings 100, 200 & 300) have already been completed, with construction underway on Phase II (Buildings 400, 500 & 600)
- High image corporate industrial park with frontage on TX-375 Loop
- Strategically positioned approximately 7.5 miles north of the Zaragoza Port of Entry
- Convenient access to TX-375 Loop and Interstate-10
- Large truck court with ample trailer staging
- Located in Foreign Trade Zone No. 68
- Approximately 13.5 miles to El Paso International Airport

MARKET OVERVIEW

- Business friendly Borderplex region
<https://www.borderplexalliance.org>
- El Paso is the 22nd largest city in the U.S. & 6th largest in Texas
- Largest bi-national industrial market with over 135 million SF
- Roughly equidistant to Houston and Los Angeles on Interstate-10
- Home to more than 70 of the Fortune 500





CAMINO REAL LOGISTICS PARK

**1800 Vindale Road
(Building 3)
El Paso, Texas 79936**

Chad McCleskey

Senior Vice President
+1 915 313 8805
chad.mccleskey@cbre.com

André R. Rocha

First Vice President
+1 915 313 8816
andre.rocha@cbre.com

Warehouse / Distribution
For Lease: 345,394 Square Feet



REAL
ESTATE

CBRE

www.cbre.com/elpaso

© 2025 CBRE, Inc. All rights reserved. This information has been obtained from sources believed reliable, but has not been verified for accuracy or completeness. You should conduct a careful, independent investigation of the property and verify all information. Any reliance on this information is solely at your own risk.

CBRE and the CBRE logo are service marks of CBRE, Inc. All other marks displayed on this document are the property of their respective owners, and the use of such logos does not imply any affiliation with or endorsement of CBRE.

Prior to including any photos in any materials, you must first make sure that CBRE has the right to use such photos from the copyright owner, and determine whether our marketing materials must include a credit to the copyright owner.

LICENSE HOLDER CONTACT INFORMATION: This notice is being provided for information purposes. It does not create an obligation for you to use the broker's services. Please acknowledge receipt of this notice below and retain a copy for your records.