

FOR SALE

2075 BARSTOW STREET

M-1-SPD ZONED LAND FOR SALE SACRAMENTO, CA 95815

M-1-SPD zoned land for sale. 6,534 SF or 0.15 acres of land for sale at \$130,680.

TANNER LAVERTY, CCIM

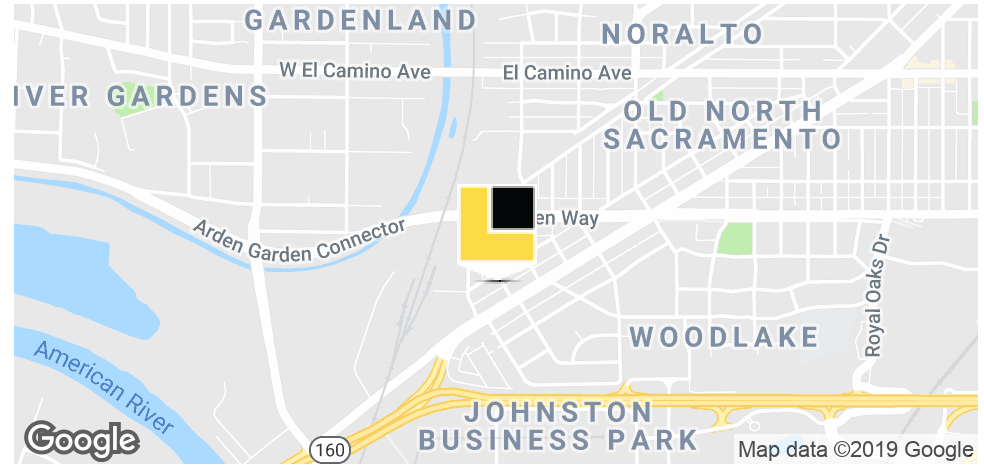
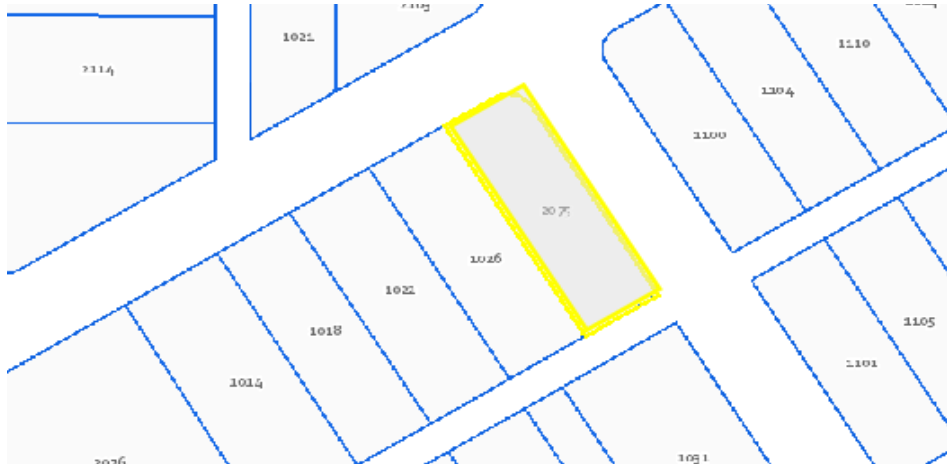
408.622.4490 x101
tanner@lavertychacon.com
BRE Officer #1436559

MARC CHACON, CPM

916.722.0333
marc@lavertychacon.com
BRE Officer #1431257

75 E SANTA CLARA STREET // SUITE 600
SAN JOSE, CA 95113

408.622.4490 // INFO@LAVERTYCHACON.COM
BRE CORPORATE ID #1901749 // **LAVERTYCHACON.COM**



OFFERING SUMMARY

Sale Price: \$130,680

Lot Size: 0.15 Acres

Zoning: M-1-SPD

Market: Old North Sacramento

Price / SF: \$20.00

PROPERTY OVERVIEW

M-1-SPD zoned land for sale. 6,534 SF or 0.15 acres of land for sale at \$130,680.

PROPERTY HIGHLIGHTS

- Can be sold along with two to 6 parcels on Del Paso Blvd
- Can be used as staging for construction purposes
- City of Sacramento is interested in offloading this site
- Close to public transit lines and stops
- Easy access on three sides of parcel
- Located in growing community
- 5 minutes from Downtown Sacramento
- 3 blocks from CA-160 for easy transportation logistics

Tanner Laverty, CCIM
408.622.4490 x101
tanner@lavertychacon.com
BRE Officer #1436559

Marc Chacon, CPM
916.722.0333
marc@lavertychacon.com
BRE Officer #1431257

75 E Santa Clara Street // Suite 600
San Jose, CA 95113
408.622.4490 // info@lavertychacon.com
BRE Corporate ID #1901749 // lavertychacon.com



Tanner Lavery, CCIM
408.622.4490 x101
tanner@lavertychacon.com
BRE Officer #1436559

Marc Chacon, CPM
916.722.0333
marc@lavertychacon.com
BRE Officer #1431257

75 E Santa Clara Street // Suite 600
San Jose, CA 95113
408.622.4490 // info@lavertychacon.com
BRE Corporate ID #1901749 // lavertychacon.com



LOCATION DESCRIPTION

Located in Old North Sacramento
Quick access to I-80 and Downtown Sacramento
Near grocery stores, coffee shops, restaurants and public transit lines

Tanner Laverty, CCIM
408.622.4490 x101
tanner@lavertychacon.com
BRE Officer #1436559

Marc Chacon, CPM
916.722.0333
marc@lavertychacon.com
BRE Officer #1431257

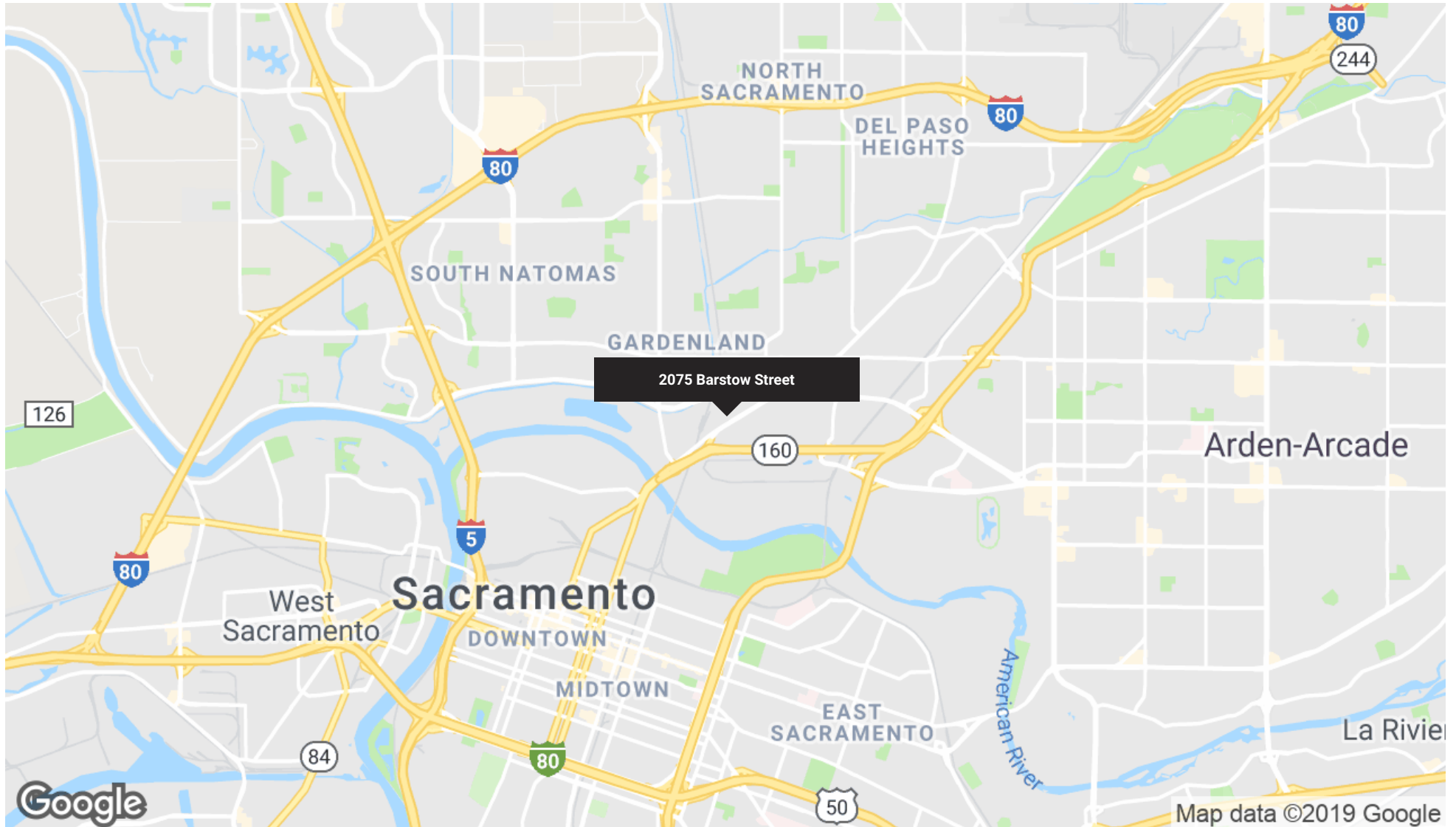
75 E Santa Clara Street // Suite 600
San Jose, CA 95113
408.622.4490 // info@lavertychacon.com
BRE Corporate ID #1901749 // lavertychacon.com



Tanner Laverty, CCIM
408.622.4490 x101
tanner@lavertychacon.com
BRE Officer #1436559

Marc Chacon, CPM
916.722.0333
marc@lavertychacon.com
BRE Officer #1431257

75 E Santa Clara Street // Suite 600
San Jose, CA 95113
408.622.4490 // info@lavertychacon.com
BRE Corporate ID #1901749 // lavertychacon.com



Tanner Laverty, CCIM
408.622.4490 x101
tanner@lavertychacon.com
BRE Officer #1436559

Marc Chacon, CPM
916.722.0333
marc@lavertychacon.com
BRE Officer #1431257

75 E Santa Clara Street // Suite 600
San Jose, CA 95113
408.622.4490 // info@lavertychacon.com
BRE Corporate ID #1901749 // lavertychacon.com



M-1-SPD ZONED LAND FOR SALE

2075 Barstow Street
Sacramento, CA 95815

For More Information:

TANNER LAVERTY, CCIM

408.622.4490 x101
tanner@lavertychacon.com
BRE Officer #1436559

MARC CHACON, CPM

916.722.0333
marc@lavertychacon.com
BRE Officer #1431257

BRE Corporate ID #1901749

LAVERTY CHACÓN COMMERCIAL REAL ESTATE
Sacramento Valley San Francisco Bay Area
916.722.0333 **408.622.4490**
info@lavertychacon.com | www.lavertychacon.com