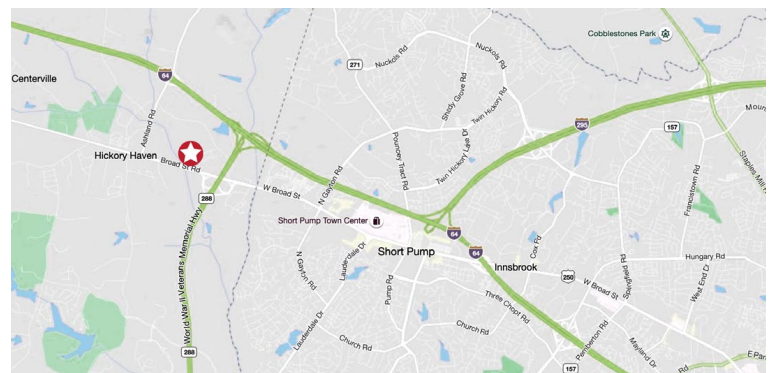




### HIGHLIGHTS

- Frontage on W. Broad Street - just West of 288 Interchange
- Full access corner at Mills Road and Broad Street
- 19,000 square feet retail style professional office buildings
- Two buildings: Building A 12,000 SF  
Building B 7,000 SF
- Broad Street and building signage
- Traffic counts:
  - W Broad (US 250) 30,000+ VPD
  - Route 288 50,000+ VPD
  - I-64 73,000+ VPD



### MORE INFORMATION

MIKE CARROLL  
mcarroll@glcva.com  
(804) 359-3575 EXT. 1

# BROAD MILLS PROFESSIONAL

NWC of Mills Rd & Broad Street | Gochland, VA

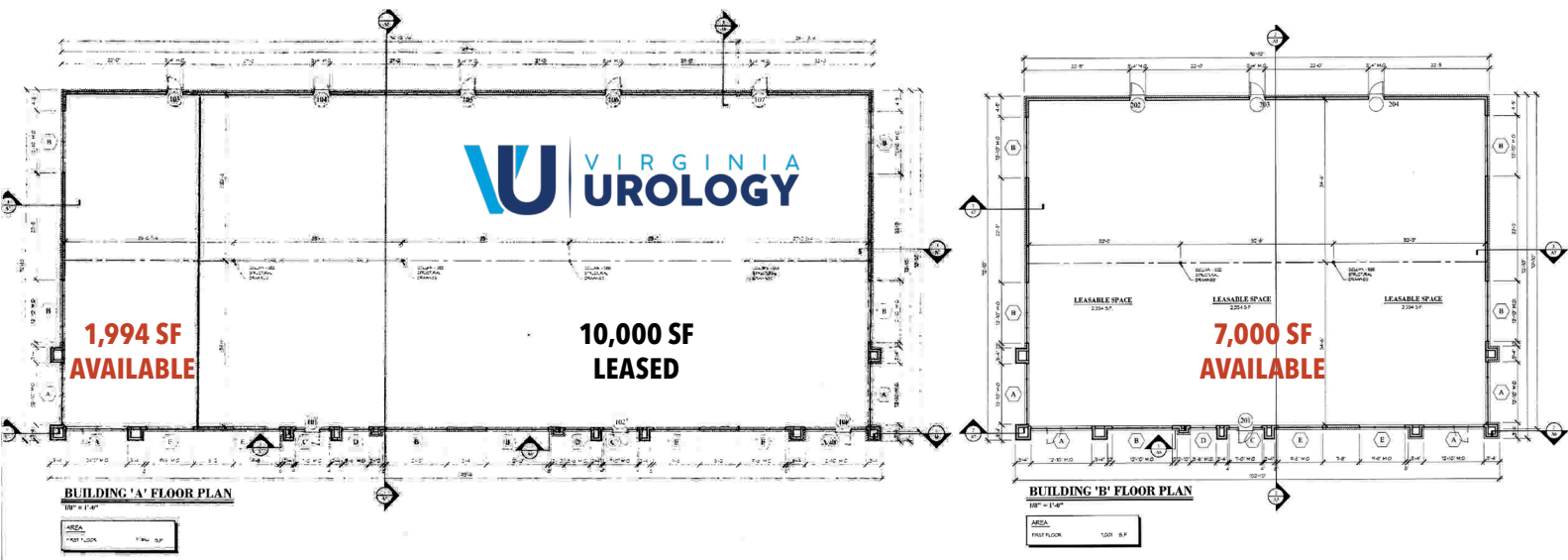


## NEW PROFESSIONAL OFFICE BUILDINGS

## FOR LEASE



JULY 8, 2021



Information contained herein was provided by sources believed to be reliable, General Land Commercial Real Estate Co. makes no representation, expressed or implied, as to its accuracy and said information is subject to errors, omissions or changes.

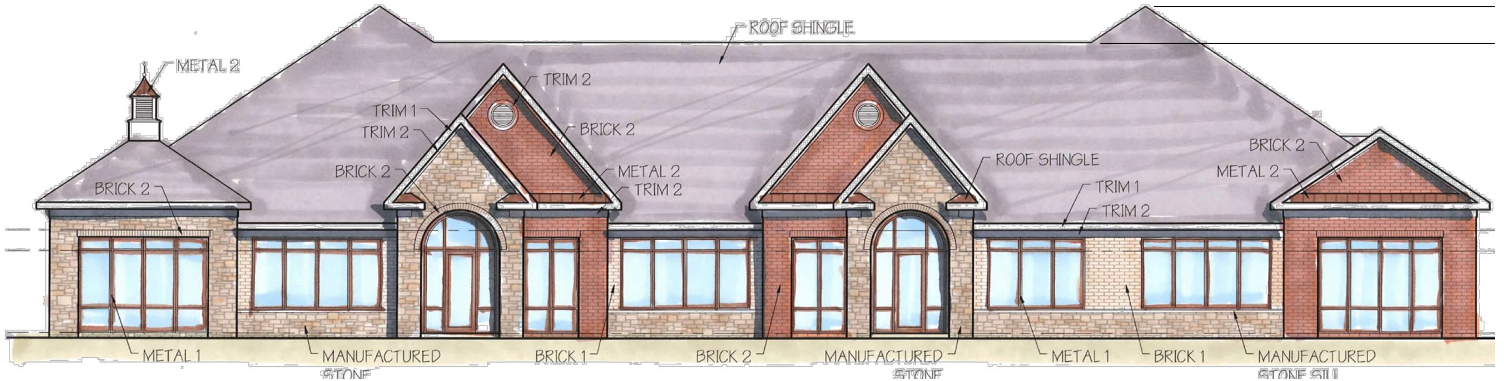
# BROAD MILLS PROFESSIONAL

NWC of Mills Rd & Broad Street | Gochland, VA



## NEW PROFESSIONAL OFFICE BUILDINGS

FOR LEASE



Information contained herein was provided by sources believed to be reliable, General Land Commercial Real Estate Co. makes no representation, expressed or implied, as to its accuracy and said information is subject to errors, omissions or changes.