

Medical/Office Building | For Lease



# 515 & 521 E Joppa Road

Stonehouse Crossing- Towson Redevelopment



**Peter Coe**

Associate

📞 O: 443.921.9322  
✉️ pcoe@troutdaniel.com  
🌐 www.troutdaniel.com



**Coleman Tirone**

Associate

📞 O: 443.921.9328  
✉️ ctirone@troutdaniel.com  
🌐 www.troutdaniel.com

# 515 & 521 E Joppa Road

Towson, MD

# Summary



## OFFERING SUMMARY

Lease Rate:	Negotiable
Building Size:	19,700 SF
Available SF:	1,183 - 2,642 SF
Lot Size:	1.31 Acres
Market:	Baltimore
Submarket:	Towson

## PROPERTY OVERVIEW

A once underutilized property is now a well-established redevelopment that serves as a medical / office boutique hub in Towson, MD. This property is located in the heart of Towson, where you are surrounded by many options: multiple restaurants, entertainment opportunities, the local library, and conveniently located to I-695, and I-83.

## PROPERTY HIGHLIGHTS

- 3 blocks east of York & Joppa Road
- Private restroom facilities and individual heat and air conditioning per suite
- On-site gym available for tenant use

## SPACES

515 E Joppa Road - Suite 304

## LEASE RATE

Negotiable

## LEASE TYPE

MG (Modified Gross)

## SPACE SIZE

1,429 - 2,642 SF

515 E Joppa Road - Suite 303

Negotiable

MG (Modified Gross)

1,183 SF



### Peter Coe

Associate

O: 443.921.9322  
pcoe@troutdaniel.com  
www.troutdaniel.com



### Coleman Tirone

Associate

O: 443.921.9328  
ctirone@troutdaniel.com  
www.troutdaniel.com

30 E. Padonia Road, Suite 504  
Timonium, MD 21093

Visit Us  
troutdaniel.com  
Call Us  
410.435.4004



The information contained in this marketing brochure has been obtained from sources we believe to be reliable; however, Trout Daniel & Associates LLC has not verified, and will not verify any of the information contained herein, nor has Trout Daniel & Associates LLC conducted any investigation regarding these matters and makes no warranty or representation whatsoever regarding the accuracy or completeness of the information provided. An agent indicated by an asterisk (\*) has a direct or indirect ownership interest in this property.



**Peter Coe**

Associate

O: 443.921.9322  
 pcoe@troutdaniel.com  
 www.troutdaniel.com



**Coleman Tirone**

Associate

O: 443.921.9328  
 ctirone@troutdaniel.com  
 www.troutdaniel.com

30 E. Padonia Road, Suite 504  
Timonium, MD 21093

**Visit Us**  
 troutdaniel.com  
**Call Us**  
 410.435.4004





**Peter Coe**

Associate

📞 O: 443.921.9322  
✉️ pcoe@troutdaniel.com  
🌐 www.troutdaniel.com



**Coleman Tirone**

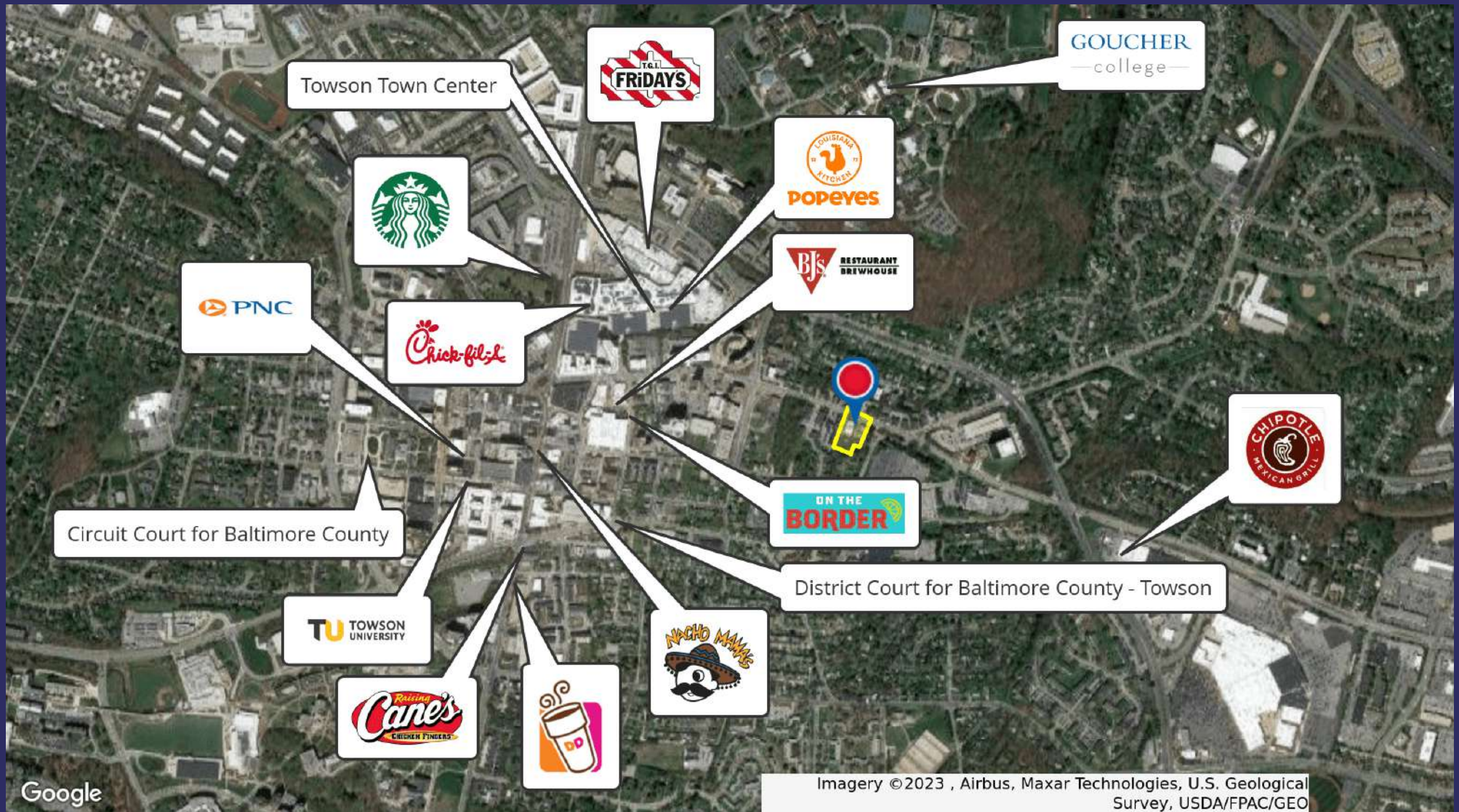
Associate

📞 O: 443.921.9328  
✉️ ctirone@troutdaniel.com  
🌐 www.troutdaniel.com

30 E. Padonia Road, Suite 504  
Timonium, MD 21093

Visit Us  
troutdaniel.com  
Call Us  
410.435.4004





Google

Imagery ©2023 , Airbus, Maxar Technologies, U.S. Geological Survey, USDA/FPAC/GEO



**Peter Coe**

Associate

📞 O: 443.921.9322  
✉️ pcoe@troutdaniel.com  
🌐 www.troutdaniel.com



**Coleman Tirone**

Associate

📞 O: 443.921.9328  
✉️ ctirone@troutdaniel.com  
🌐 www.troutdaniel.com

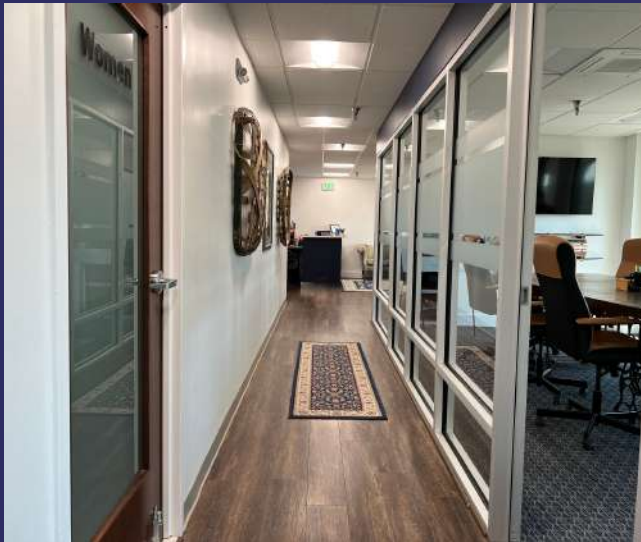
30 E. Padonia Road, Suite 504  
Timonium, MD 21093

Visit Us  
troutdaniel.com  
Call Us  
410.435.4004



515 & 521 E Joppa Road  
Towson, MD

# Interior Photos



**Peter Coe**

Associate

O: 443.921.9322  
pcoe@troutdaniel.com  
www.troutdaniel.com



**Coleman Tirone**

Associate

O: 443.921.9328  
ctirone@troutdaniel.com  
www.troutdaniel.com

30 E. Padonia Road, Suite 504  
Timonium, MD 21093

Visit Us  
troutdaniel.com  
Call Us  
410.435.4004



The information contained in this marketing brochure has been obtained from sources we believe to be reliable; however, Trout Daniel & Associates LLC has not verified, and will not verify any of the information contained herein, nor has Trout Daniel & Associates LLC conducted any investigation regarding these matters and makes no warranty or representation whatsoever regarding the accuracy or completeness of the information provided. An agent indicated by an asterisk (\*) has a direct or indirect ownership interest in this property.



**TRANSIT/SUBWAY**

- 1) BJ's Restaurant & Brewhouse
- 2) Towson Tavern
- 3) Bonefish Grill



2 Minutes, 4 Minutes, 2 Minutes



9 Minutes, 11 Minutes, 8 Minutes



0.4 Miles, 0.7 Miles, 0.4 Miles



**COMMUTER RAIL**

- 1) The Fresh Market
- 2) Towson Town Center
- 3) Cinemark Towson and XD



5 Minutes, 4 Minutes, 2 Minutes



15 Minutes, 10 Minutes, 9 Minutes



0.8 Miles, 0.5 Miles, 0.5 Miles



**AIRPORT**

- 1) I-83
- 2) I-695
- 3) I-95



7 Minutes, 5 Minutes, 10 Minutes



N/A



N/A



**Peter Coe**  
Associate

O: 443.921.9322  
pcoe@troutdaniel.com  
www.troutdaniel.com



**Coleman Tirone**  
Associate

O: 443.921.9328  
ctirone@troutdaniel.com  
www.troutdaniel.com

30 E. Padonia Road, Suite 504  
Timonium, MD 21093

Visit Us  
troutdaniel.com  
Call Us  
410.435.4004





**Peter Coe**

Associate

 O: 443.921.9322

 pcoe@troutdaniel.com



**Coleman Tirone**

Associate

 O: 443.921.9328

 ctirone@troutdaniel.com

The information contained in this marketing brochure has been obtained from sources we believe to be reliable; however, Trout Daniel & Associates LLC has not verified, and will not verify any of the information contained herein, nor has Trout Daniel & Associates LLC conducted any investigation regarding these matters and makes no warranty or representation whatsoever regarding the accuracy or completeness of the information provided. An agent indicated by an asterisk (\*) has a direct or indirect ownership interest in this property.

## Contact Us



**30 E. Padonia Road, Suite 504**  
Timonium, MD 21093



**Visit Us**  
troutdaniel.com



**Call Us**  
410.435.4004