



Property highlights

- 3,920 sf available for sublease
- Bank branch with drive-through
- High visibility retail presence
- Dedicated parking - eight (8) spaces
- Sublease runs through 2/28/28

For more information, please contact:

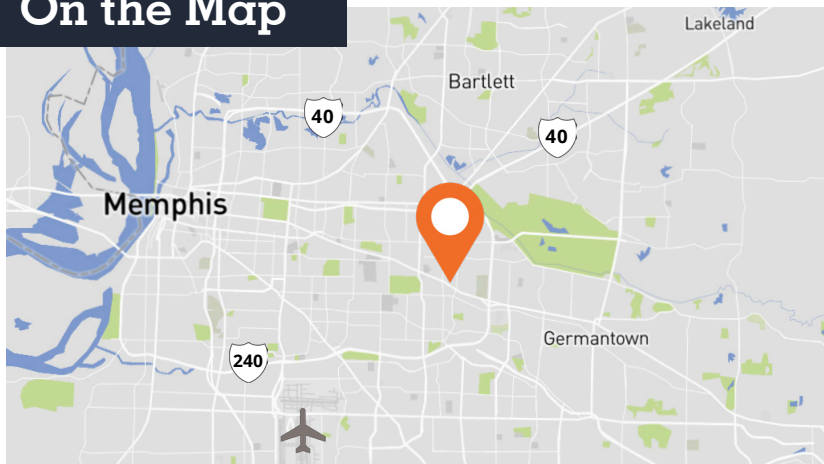
Bentley Pembroke, SIOR, Vice President

D 901 410 5266

C 901 378 9757

bentley.pembroke@avisonyoung.com

On the Map



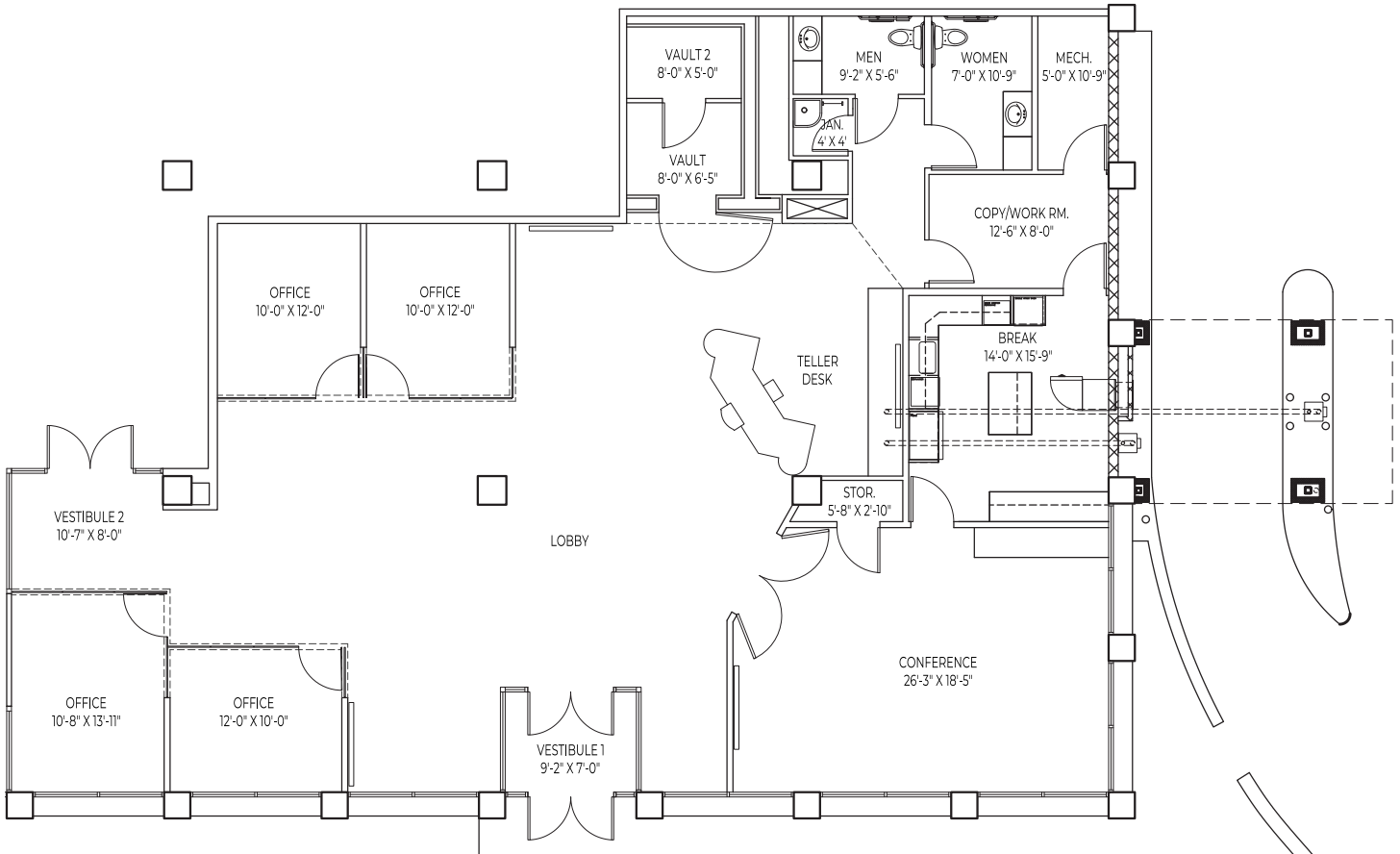
5350 Poplar Avenue, Suite 205

Memphis, TN 38119

901 231 1400

Suite 80

3,920 sf



Bentley Pembroke, SIOR, Vice President
D 901 410 5266
C 901 378 9757
bentley.pembroke@avisonyoung.com