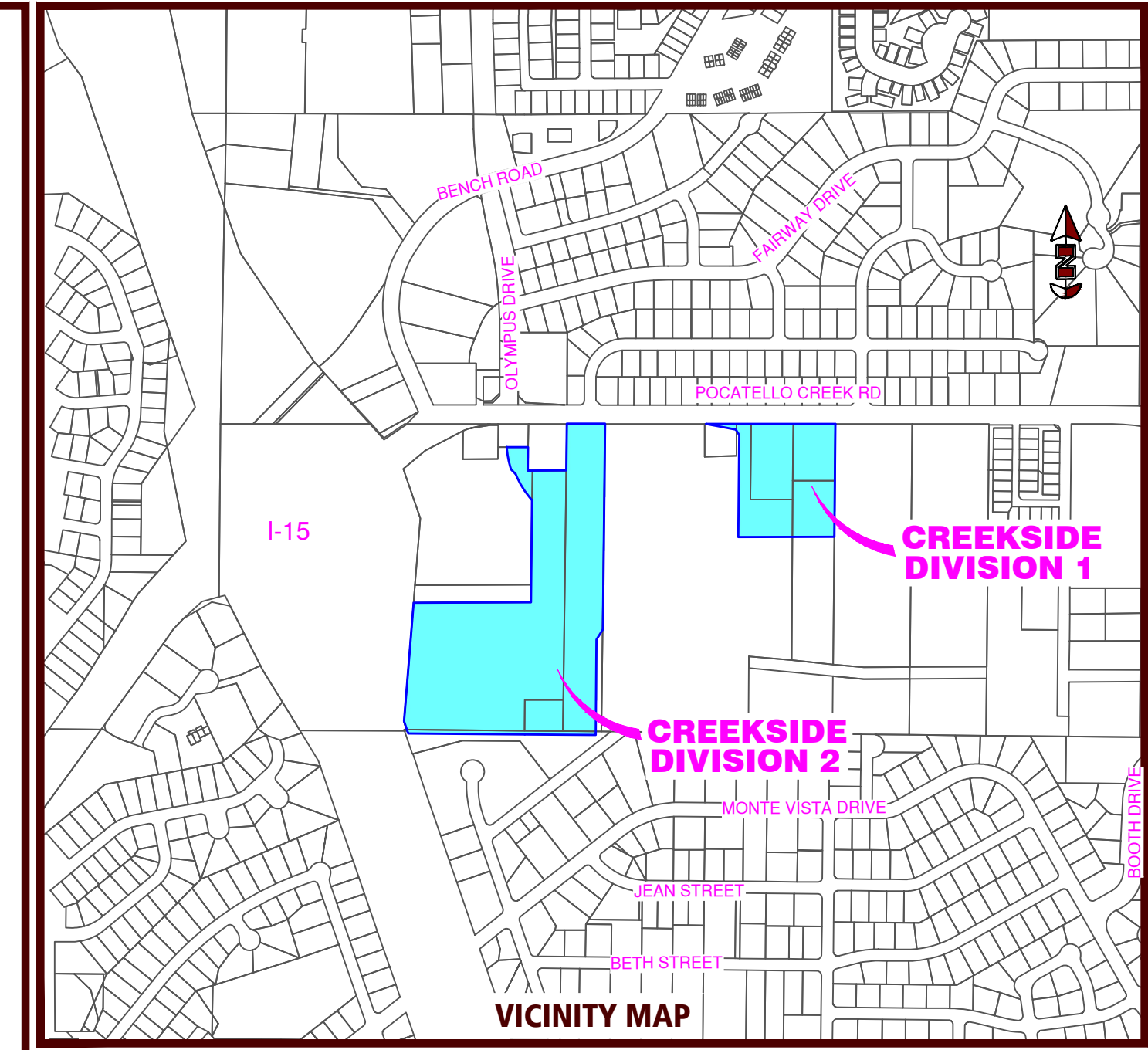
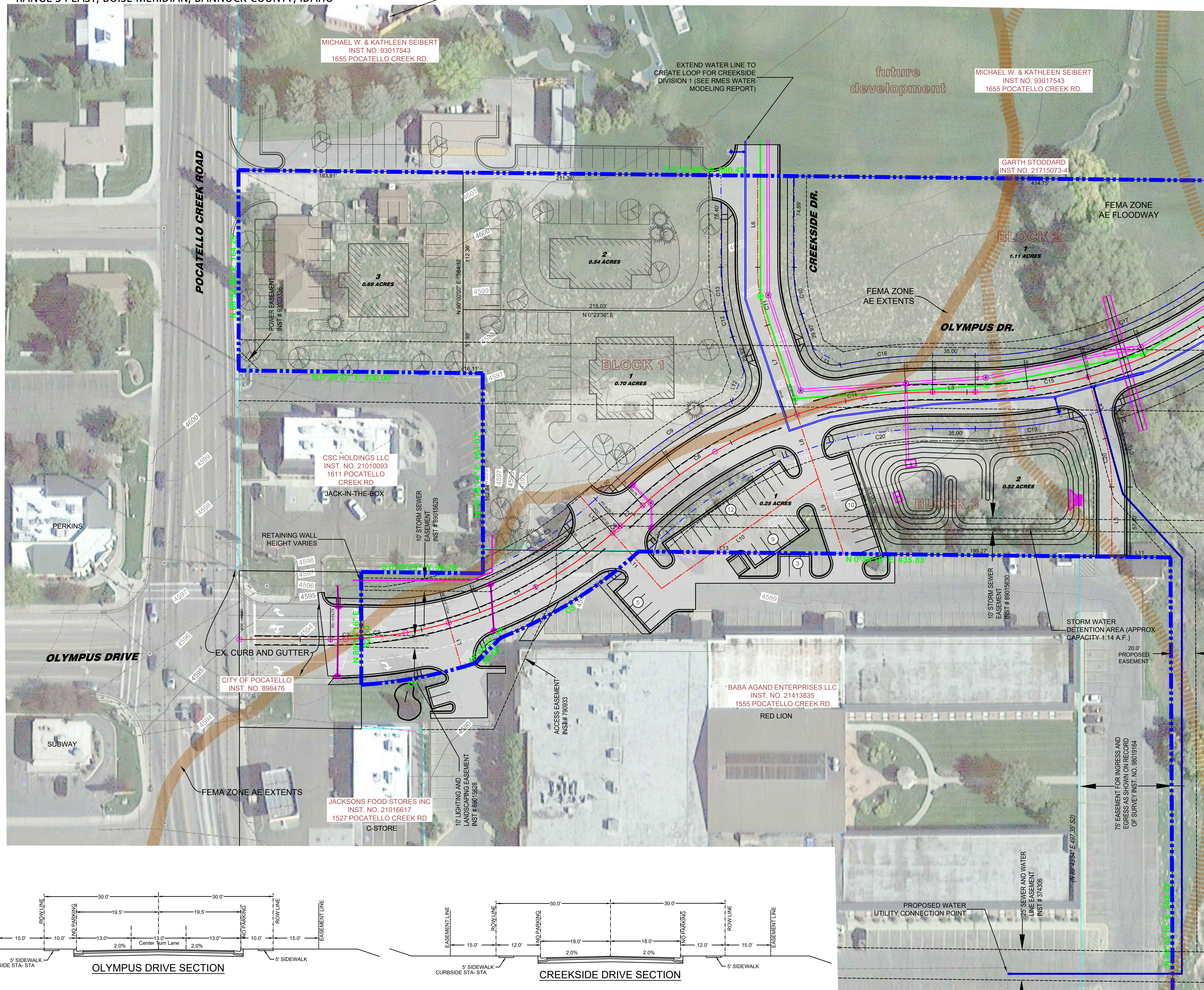


PRELIMINARY PLAT FOR: CREEKSIDE DISTRICT DIVISION 2

LOCATED IN THE NORTHEAST 1/4 OF THE SOUTHWEST 1/4 OF SECTION 13, TOWNSHIP 6 SOUTH,
RANGE 34 EAST, BOISE MERIDIAN, BANNOCK COUNTY, IDAHO



LEGEND & NOTES

	BOUNDARY LINE	NOTES 1. EXISTING ZONING: COMMERCIAL GENERAL 2. SUBDIVISION AREA: +/-15.56 ACRES 3. SUBDIVISION LOTS: 5, 1 PARKING LOT, 1 STORM WATER LOTS 4. GAS, POWER, TELEPHONE, CABLE T.V. & ETC. TO BE PROVIDED WITHIN DEVELOPMENT. 5. STORM WATER GENERATED SHALL BE DETAINED IN POND SHOWN 6. EASEMENTS ARE 10' (FT.) WIDE UNLESS OTHERWISE NOTED.
	PROPERTY LINE	
	EASEMENT LINE	
	CENTER LINE	
	SECTION LINE	
	EXISTING CONTOUR LINES	
	WATER LINE	
	SEWER LINE	
	STORM LINE	
	SEWER MANHOLE	
	SEWER SERVICE	
	STORM MANHOLE	
	STORM CATCH BASIN	
	FIRE HYDRANT	
	WATER METER	
	WATER SERVICE	
	WATER VALVE	

ARCH B SCALE (12"x18")
1 INCH = 80 FEET

ARCH D SCALE (24"x36")
1 INCH = 40 FEET

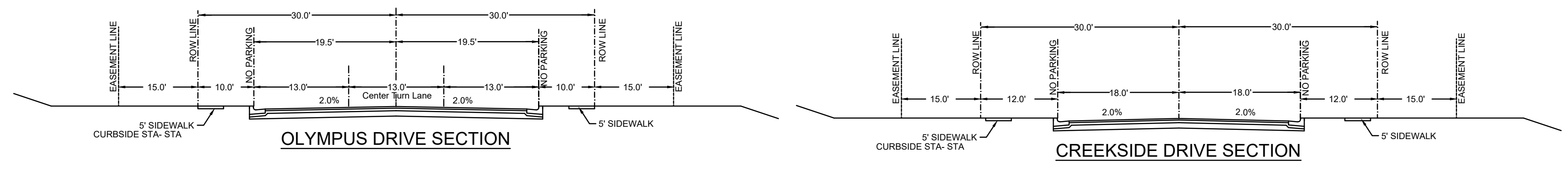
PRELIMINARY PLAT FOR:
CREEKSIDE DISTRICT DIVISION 2
LOCATED IN THE NORTHEAST 1/4 OF THE SOUTHWEST 1/4 OF SECTION 13, TOWNSHIP 6 SOUTH,
RANGE 34 EAST, BOISE MERIDIAN, BANNOCK COUNTY, IDAHO

DEVELOPER INFORMATION	
NAME: IRON EAGLE, LLC	ADDRESS: 1665 POCATELLO CREEK RD. POCATELLO, ID 83201
CONTACT: MIKE SEIBERT	PHONE: (208) 681-4472

SHEET INFORMATION	
DRAWN BY: JMG	CHECKED BY: SOB
PROJECT #: 18021	DATE CREATED: 4/26/2018
FILE PATH: R:\18\Seibert, Mike\Olympus Dr. Extension (18021)\DES\BASE	LAST REVISED: 7/10/2018

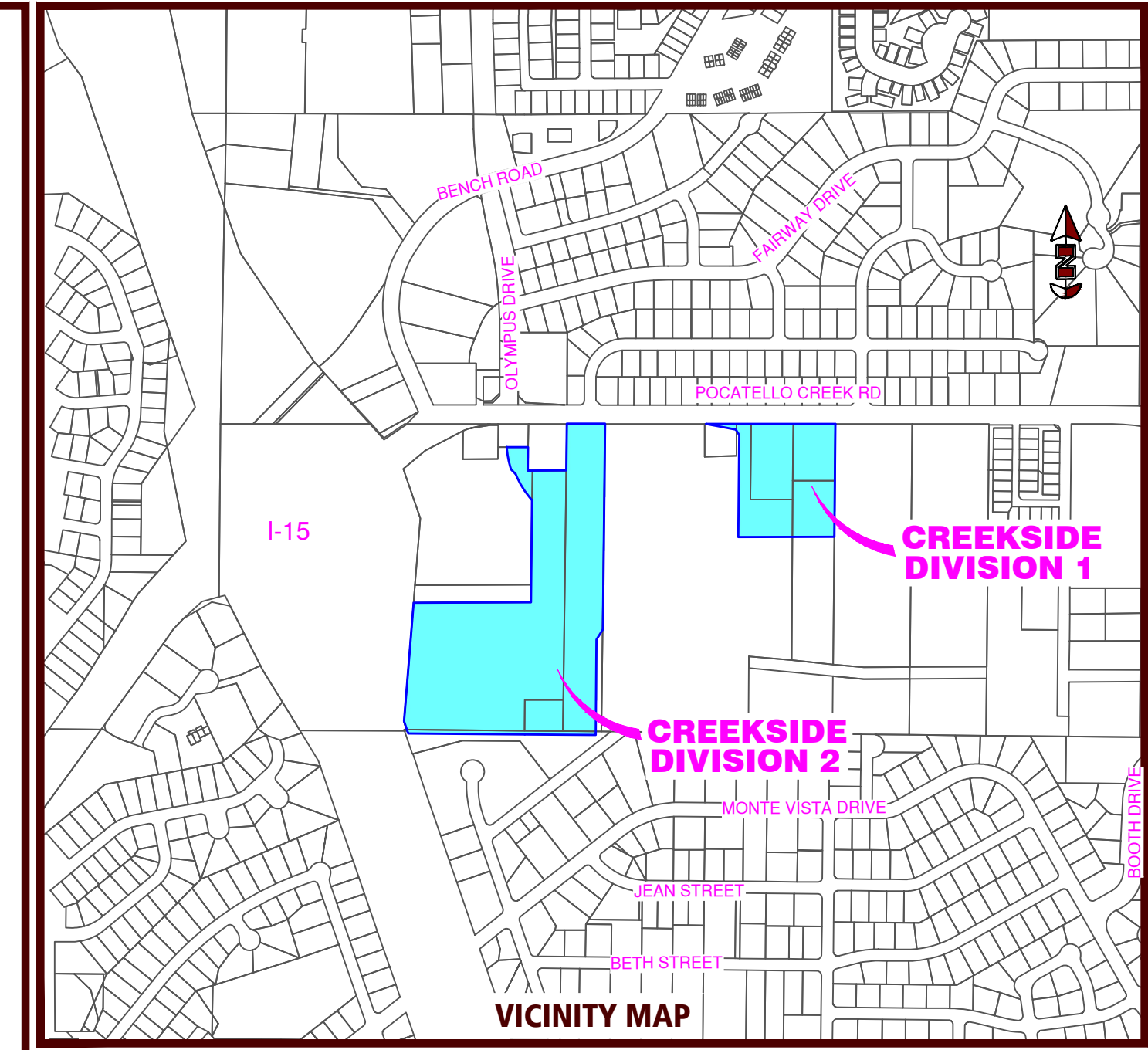
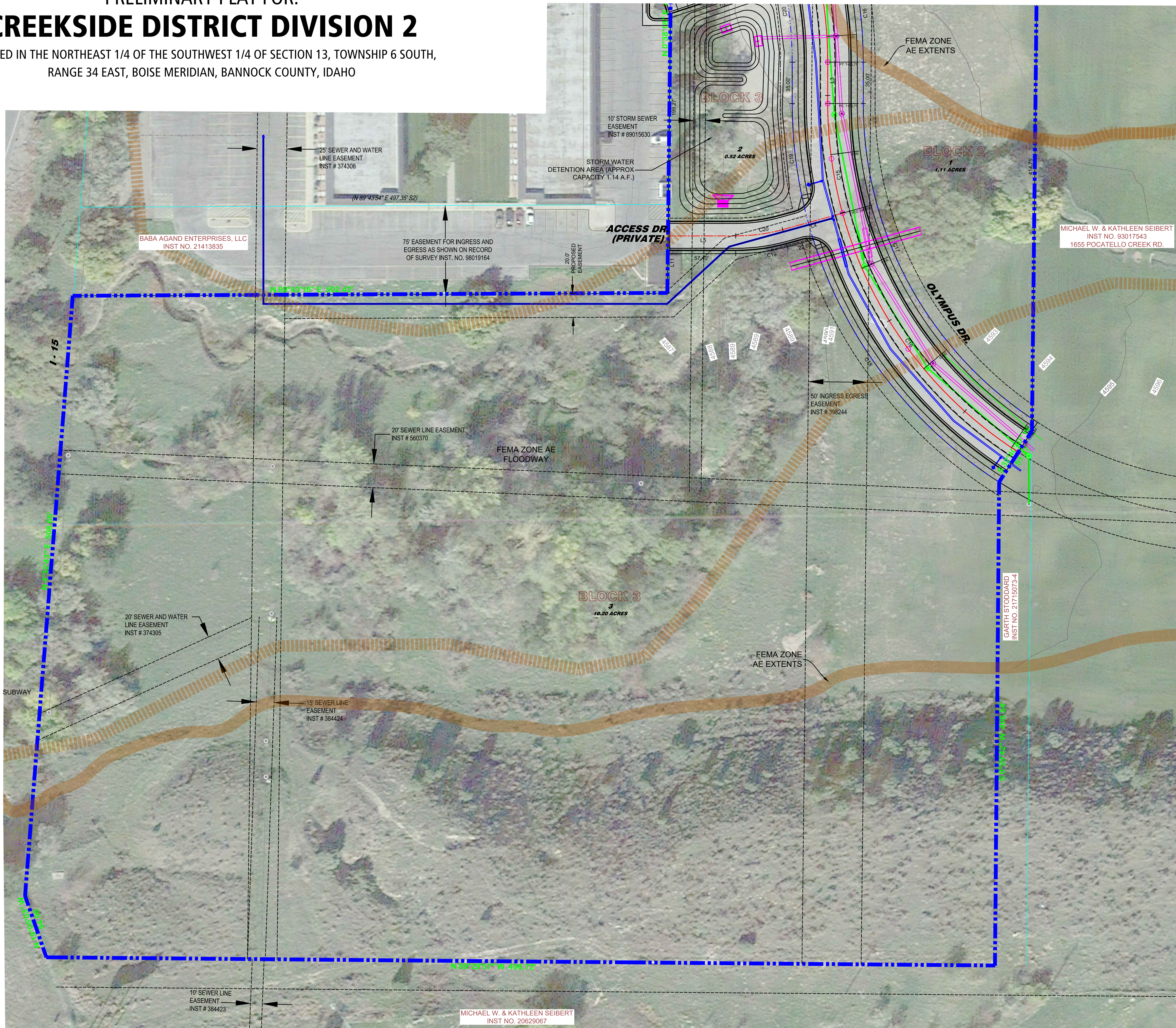
RMES
Engineers • Surveyors • Planners

301 58th St. W. #138 • Williston, ND 58801 • (701) 572-0110
600 E. Oak St. • Pocatello, ID 83201 • (208) 234-0110



PRELIMINARY PLAT FOR: CREEKSIDE DISTRICT DIVISION 2

LOCATED IN THE NORTHEAST 1/4 OF THE SOUTHWEST 1/4 OF SECTION 13, TOWNSHIP 6 SOUTH,
RANGE 34 EAST, BOISE MERIDIAN, BANNOCK COUNTY, IDAHO



LEGEND & NOTES

	BOUNDARY LINE	NOTES 1. EXISTING ZONING: COMMERCIAL GENERAL 2. SUBDIVISION AREA: +/-15.56 ACRES 3. SUBDIVISION LOTS: 5, 1 PARKING LOT, 1 STORM WATER LOTS 4. GAS, POWER, TELEPHONE, CABLE T.V. & ETC. TO BE PROVIDED WITHIN DEVELOPMENT. 6. STORM WATER GENERATED SHALL BE DETAINED IN POND SHOWN 7. EASEMENTS ARE 10' (FT.) WIDE UNLESS OTHERWISE NOTED.
	PROPERTY LINE	
	EASEMENT LINE	
	CENTER LINE	
	SECTION LINE	
	EXISTING CONTOUR LINES	
	WATER LINE	
	SEWER LINE	
	STORM LINE	
	SEWER MANHOLE	
	SEWER SERVICE	
	STORM MANHOLE	
	STORM CATCH BASIN	
	FIRE HYDRANT	
	WATER METER	
	WATER SERVICE	
	WATER VALVE	

ARCH B SCALE (12"x18")
1 INCH = 80 FEET

ARCH D SCALE (24"x36")
1 INCH = 40 FEET

PRELIMINARY PLAT FOR:
CREEKSIDE DISTRICT DIVISION 2
LOCATED IN THE NORTHEAST 1/4 OF THE SOUTHWEST 1/4 OF SECTION 13, TOWNSHIP 6 SOUTH,
RANGE 34 EAST, BOISE MERIDIAN, BANNOCK COUNTY, IDAHO

	DEVELOPER INFORMATION	
	NAME: IRON EAGLE, LLC	ADDRESS: 1665 POCATELLO CREEK RD. POCATELLO, ID 83201
	CONTACT: MIKE SEIBERT PHONE: (208) 681-4472	
SHEET INFORMATION		
DRAWN BY: JMG	CHECKED BY: SOB	
PROJECT #: 18021	DATE CREATED: 4/26/2018	LAST REVISED: 7/10/2018
FILE PATH: R:\18\Seibert, Mike\Olympus Dr. Extension (18021)\DES\BASE		

RMES
Engineers • Surveyors • Planners

301 58th St. W. #138 • Williston, ND 58801 • (701) 572-0110
600 E. Oak St. • Pocatello, ID 83201 • (208) 234-0110