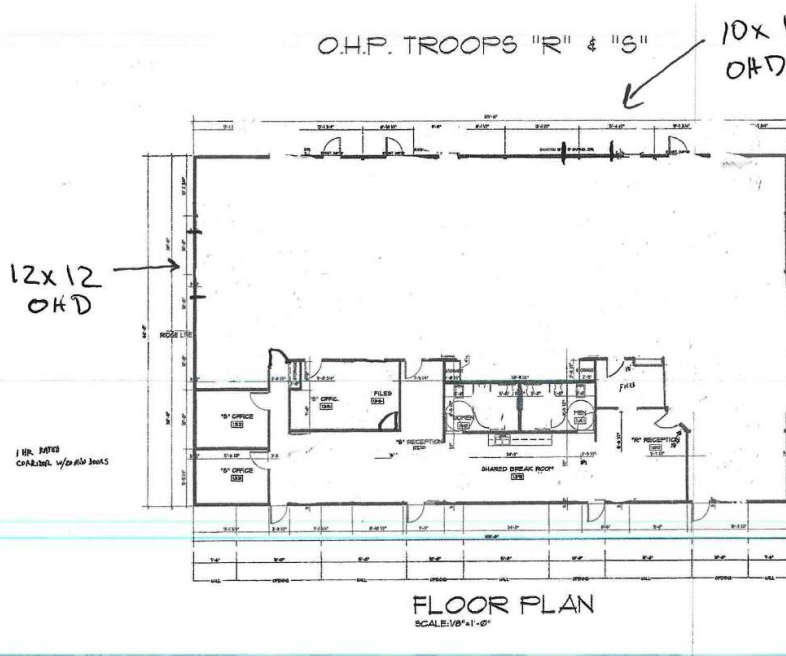


220 NORTHEAST 38TH TERRACE

OKLAHOMA CITY, OK 73105



PROPERTY DESCRIPTION

Price Edwards & Co is proud to bring 220 NE 38th Terrace to the leasing market. The property is currently under going full renovations that are set to complete before the end of December 2024. With a new, East facing 12x12 bay door, this fully temperature controlled flex space allows for a multitude of uses. Easy access to highways and a central location minutes away from downtown enhances the features of this space.

PROPERTY HIGHLIGHTS

- Two 12x12 bay doors
- Climate Controlled Shop Space
- 14 ft Clear Height in shop
- 1 Acre
- Central Location
- Easy Highway Access

OFFERING SUMMARY

Lease Rate:	\$9.50 SF/yr (NNN)
Available SF:	6,300 SF
Zoning:	I-2
Completion Date:	Dec. 2024

DANNY RIVERA

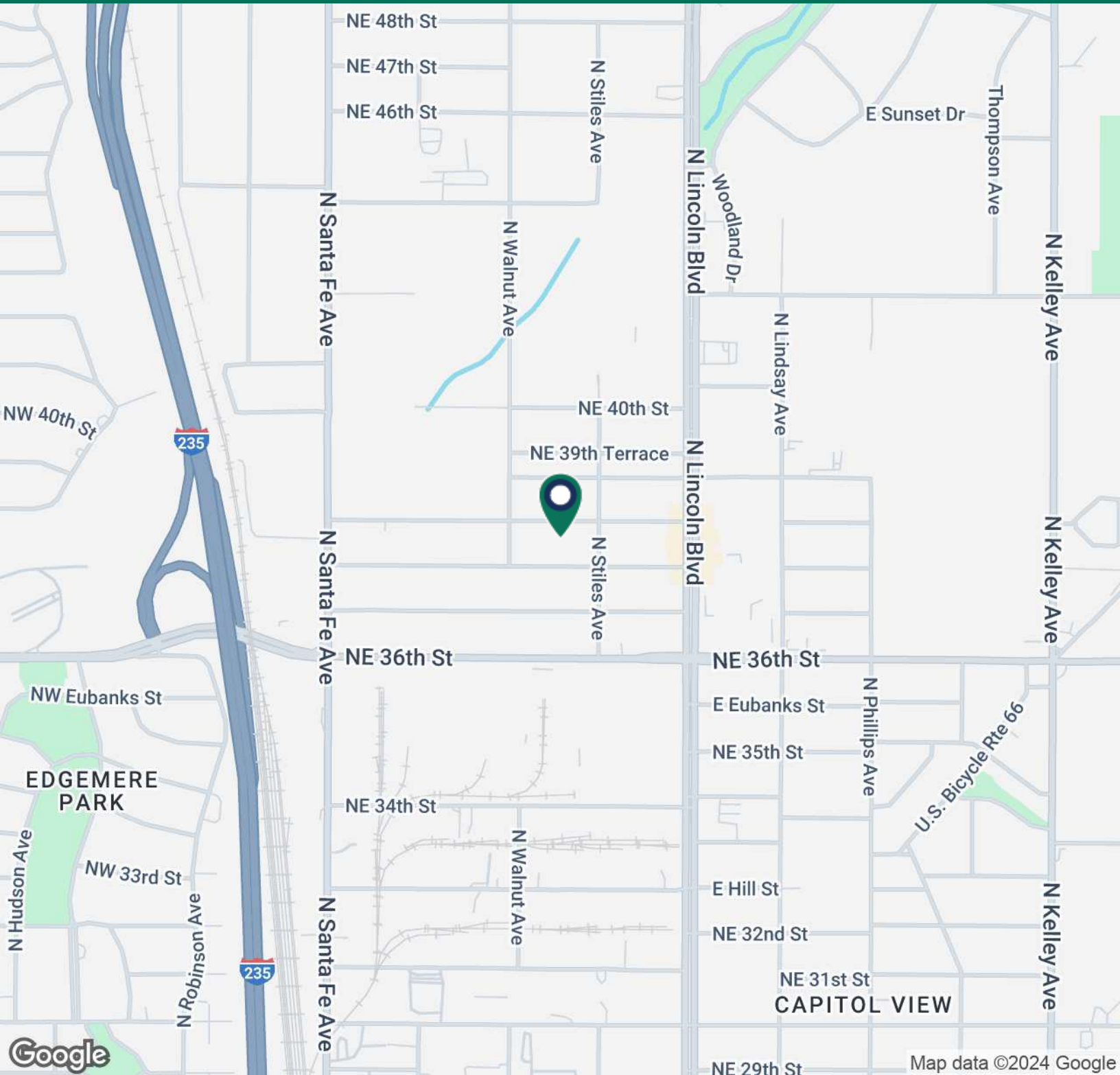
drivera@priceedwards.com
O: 405.408.5449

ANDREW HOLDER

aholder@priceedwards.com
O: 580.430.5124

220 NORTHEAST 38TH TERRACE

OKLAHOMA CITY, OK 73105



DANNY RIVERA

drivera@priceedwards.com
O: 405.408.5449

ANDREW HOLDER

aholder@priceedwards.com
O: 580.430.5124

**PRICE
EDWARDS**
AND COMPANY