



CRABTREE CENTER



PROPERTY HIGHLIGHTS

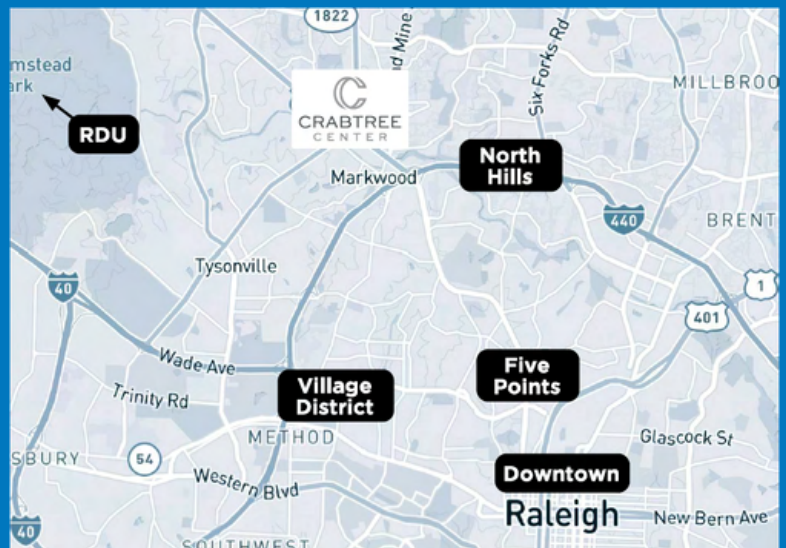
Pricing \$28.50 / SF - Full Service

New Renovations

- Freshly painted exterior
- Brand new lobbies with Class A finishes
- Improved HVAC system
- Local North Carolina art exhibited throughout
- New specialty light fixtures
- Updated landscape design

Property Features

- Incredible value for in demand location
- Local property management
- Convenient access to all parts of Raleigh via Glenwood Avenue, Creedmoor Road, and I-440
- Ample free parking
- Upfit negotiable
- Walkable to Crabtree Valley Mall - 35+ restaurants



Crabtree Center
4600 Marriott Drive
Raleigh, NC 27612



Grubb
Ventures

CONTACT

Stuart Grubb // sgrubb@grubbventures.com // O 919.786.9905 // C 919.272.2775

Joe Dye // jdye@grubbventures.com // O 919.786.9905 // C 919.931.8876



DISTANCE TO

Crabtree Valley Mall	2 mins
RDU	15 min
Raleigh Triangle Park	20 mins
North Hills	9 mins
Village District	11 mins
Glenwood South	13 mins
Downtown Raleigh	16 mins

Newly renovated, Crabtree Center offers a unique office space with a location that caters exceptionally well to clients and staff.

Conveniently located, positioned perfectly at the intersection of Glenwood Avenue and Creedmoor Road, this property is directly across from Crabtree Valley Mall's premier shopping and dining and minutes from North Hills, Cameron Village, Raleigh-Durham International Airport, Downtown Raleigh, and Raleigh Triangle Park. With dual entry points this property offers great access paired with abundant parking for staff and visitors alike.



CONTACT

Stuart Grubb // sgrubb@grubbventures.com // O 919.786.9905 // C 919.272.2775

Joe Dye // jdye@grubbventures.com // O 919.786.9905 // C 919.931.8876

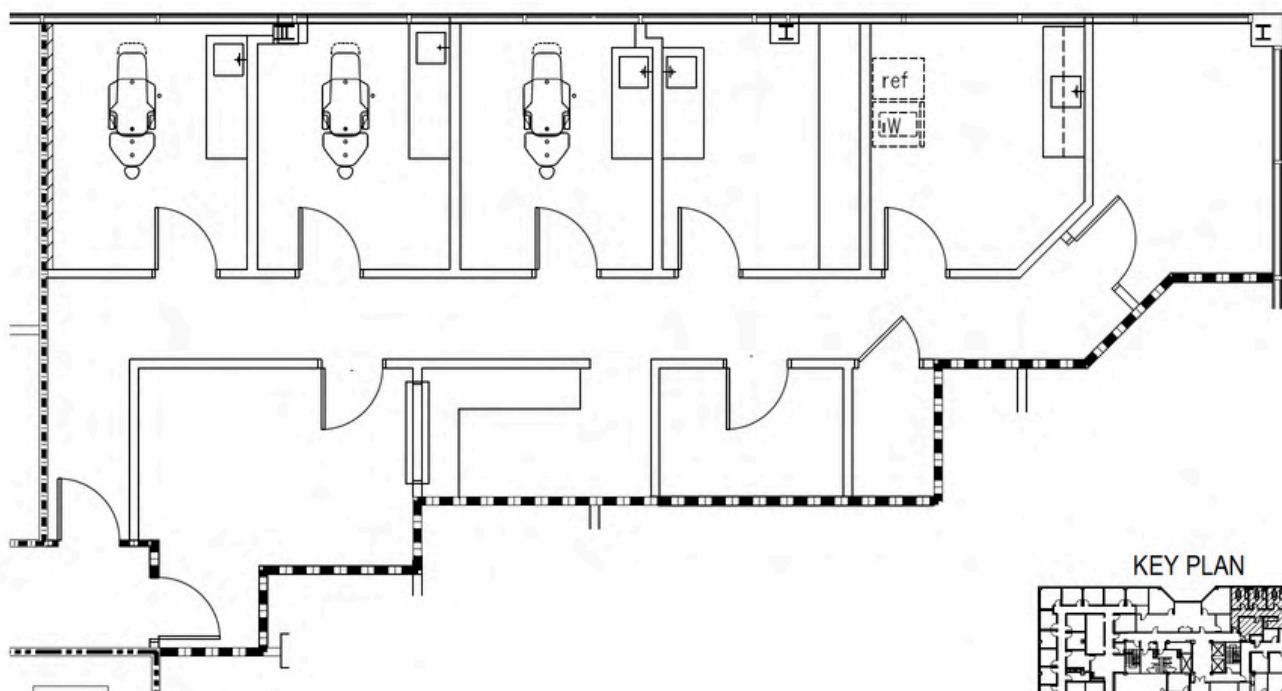
AVAILABLE FOR LEASE

Second Generation Dentist Office Space, ready for move-in!

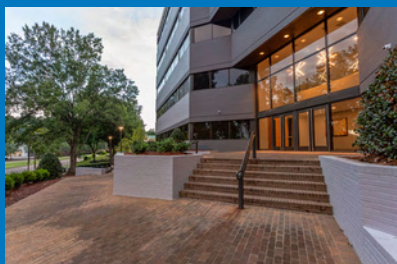
SUITE 330
1,563 RSF



SCAN FOR
VIRTUAL
TOUR



KEY PLAN



Grubb
Ventures

CONTACT

Stuart Grubb // sgrubb@grubbventures.com // O 919.786.9905 // C 919.272.2775

Joe Dye // jdye@grubbventures.com // O 919.786.9905 // C 919.931.8876