



Mayflower Business Park

428 - 438 Court St. Plymouth MA

(Proposed)
1.4 Acre Lot
FOR SALE



CENTER INFORMATION

- Location:** Route 3A Plymouth/Kingston Town Line
- Parcel Size:** 16+ Acres
- Center GLA:** 52,000 SF
- Primary Zoning:** (NC) Neighborhood Commercial Ply (R20) Kingston
- Traffic Count:** 17,820 AADT (Court St. Route 3A)
- Pylon Signage on Route 3A**
- Loading docks in rear**
- 1 mile from Route 3 Exit 8**
- Close to Cordage Park Complex**
- Nearby MBTA Commuter Rail Station**

Available: Proposed 1.4 Acre Lot For Sale

No warranty or representation, express or implied, is made as to the accuracy of the information contained herein, and same is submitted subject to errors, omissions, changes of price, lease, terms or other conditions and/or withdrawals without notice. All information must be verified by interested parties.



Mark Sobel
msobel@1stusrealty.com
508.280.4563
508.591.3000

www.1stusrealty.com



Mayflower Business Park

428 - 438 Court St. Plymouth MA

LAND
FOR SALE

Proposed Lot For Sale



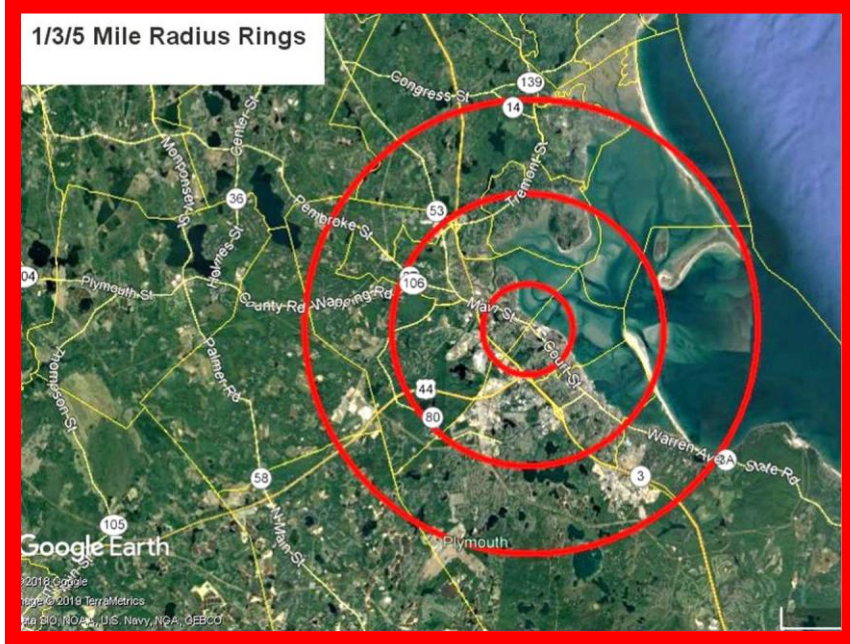
No warranty or representation, express or implied, is made as to the accuracy of the information contained herein, and same is submitted subject to errors, omissions, changes of price, lease, terms or other conditions and/or withdrawals without notice. All information must be verified by interested parties.



Mark Sobel
msobel@1stusrealty.com
508.280.4563
508.591.3000

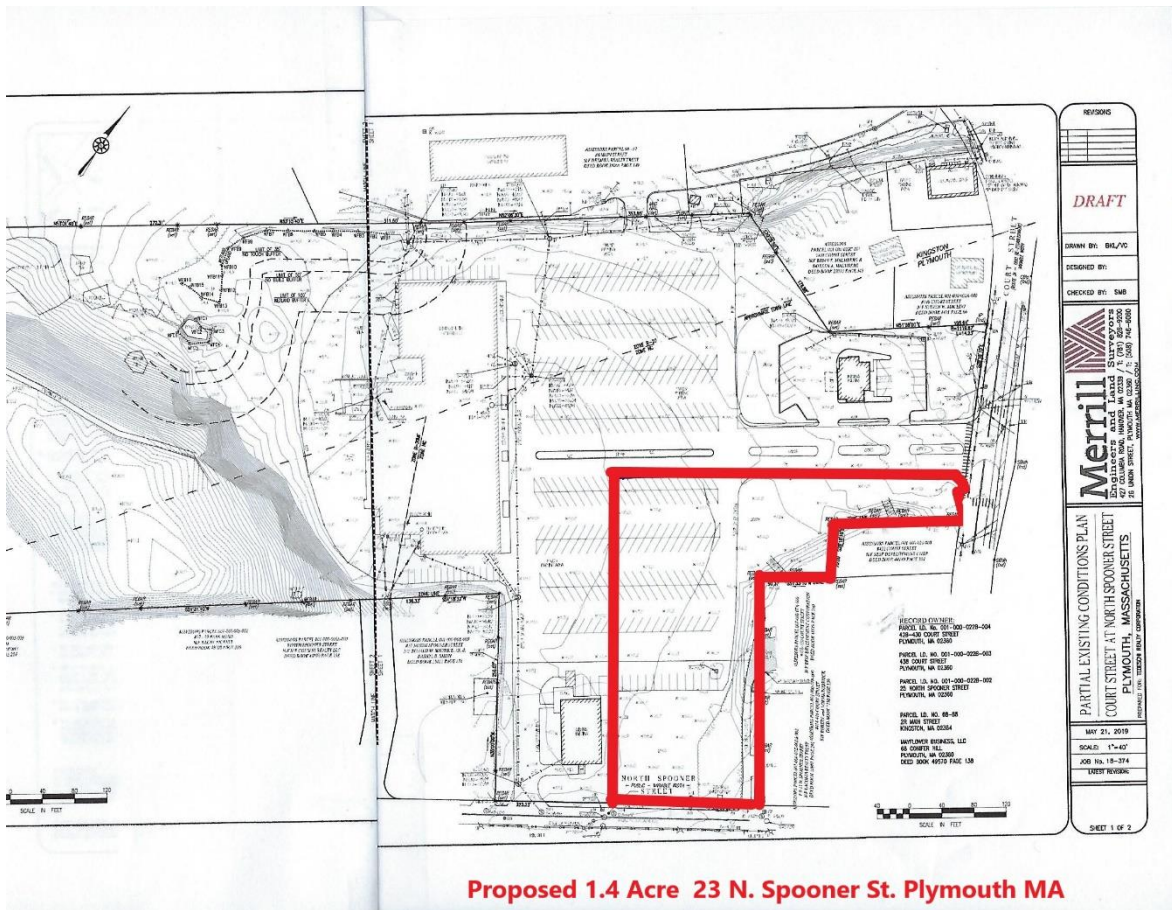
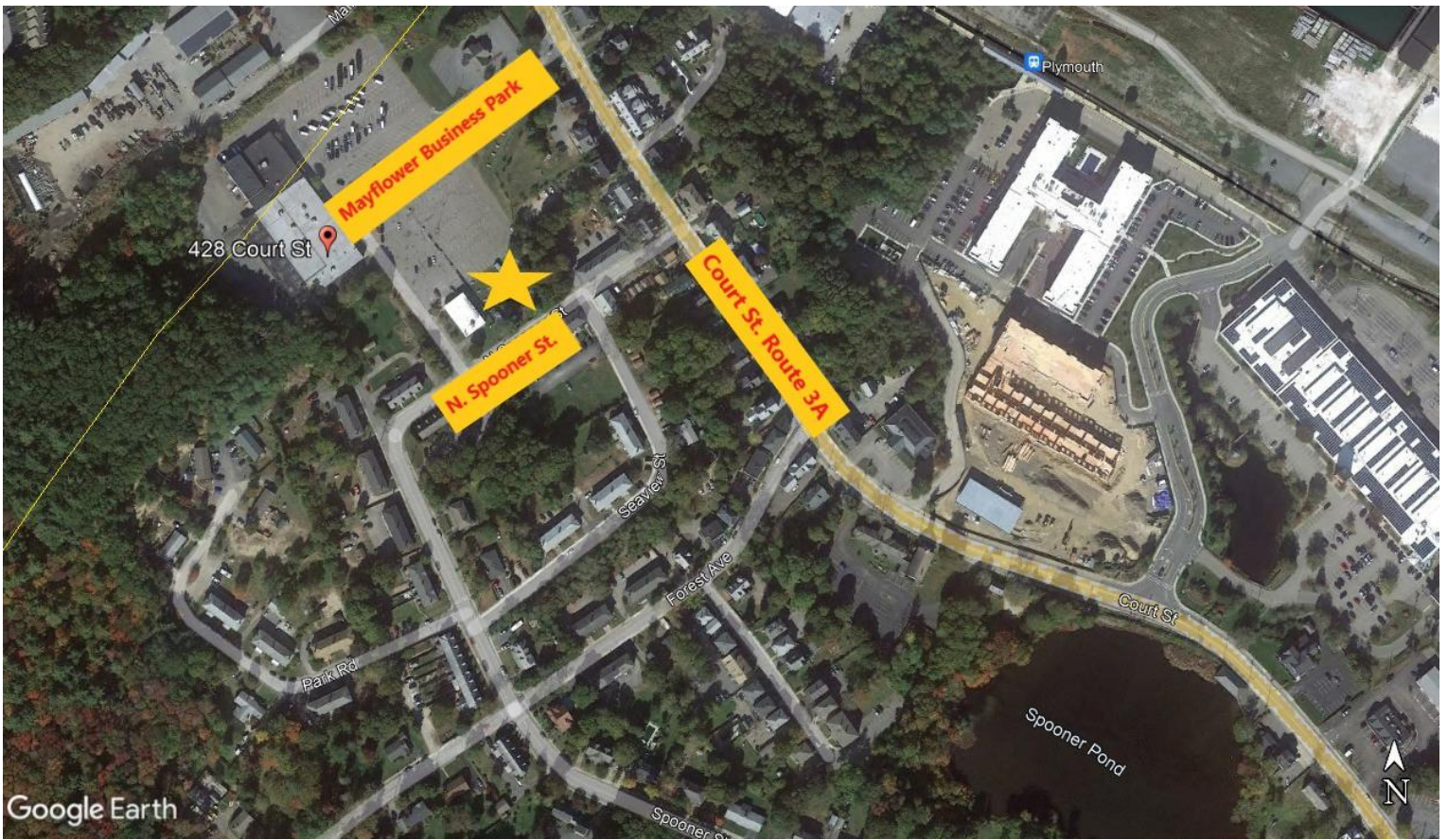
www.1stusrealty.com

Mayflower Business Park



DEMOGRAPHICS

Radius	Population	Med. HH Income	# Households
1 Mile	4,577	\$66,651.	1,968
3 Miles	24,868	\$69,857.	10,396
5 Miles	50,950	\$88,232.	19,337



LAND FOR SALE

1st U S Realty is pleased to present a 1.4 Acre Lot (approximate size) proposed for development near Court St. and North Spooner St. in Plymouth MA. Zoned as NC (Neighborhood Commercial); surrounded by residential condominiums and apartments in close proximity to the Kingston town line, Cordage Park, and Mayflower Business Park. Level with utilities available. Proposed use-apartment units.

No warranty or representation, express or implied, is made as to the accuracy of the information contained herein, and same is submitted subject to errors, omissions, changes of price, lease, terms or other conditions and/or withdrawals without notice. All information must be verified by interested parties.



Mark Sobel

msobel@1stusrealty.com

508.280.4563

508.591.3000

www.1stusrealty.com