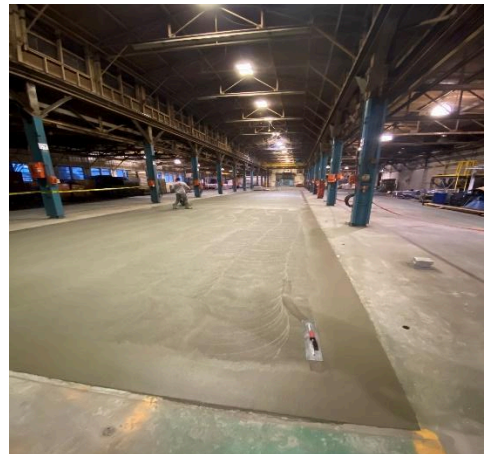
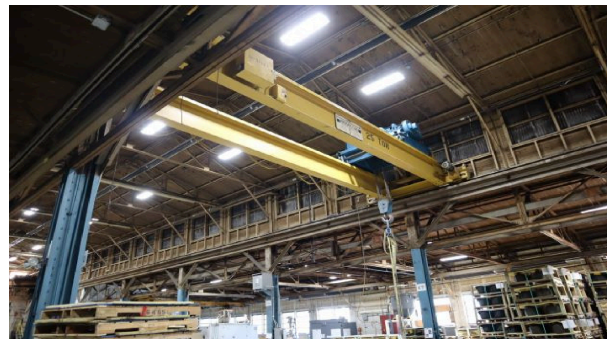


Industrial and Office space for Lease:

600 Cherry Fork, Leetonia, Columbiana County, OH 44431



- 105,000 sq. ft. Multi-Tenant Industrial bldg.
- Lease space available: Industrial: 17,480 sq. ft. & 27,670 sq. ft.; Office: 1,450 sq. ft. (46,600 sq. ft. total)
- Industrial \$4/sq. ft.; Office \$10/sq. ft.
- Common Area Docks
- Overhead Bridge Cranes & jib cranes ranging from 2-ton to 25-ton capacity
- Ceiling height 12' 14" to 40' High Bay
- LED lighting throughout building
- 3-Phase electric
- Rural setting in Village of Leetonia, OH
- Good access to major transportation routes
- 5-miles SE of Salem, OH; 15-miles S of Youngstown, OH
- Direct access to SR-11 via SR 344
- 9-miles NE access to Ohio-PA Turnpike (US-76)

CONTACT:

Austin Noel

Keller Williams Chervenik Realty

P: 330-277-6481

Austinnoel@kw.com