

**300 N PASADENA ST | GILBERT, AZ 85233**  
**INDUSTRIAL CONDO AVAILABLE FOR LEASE**

**KOBBE**  
CONDOMINIUMS



**COMMERCIAL PROPERTIES INC.**

Locally Owned. Globally Connected. CORFAC INTERNATIONAL

TEMPE: 2323 W University Drive, Tempe, AZ 85281 | 480.966.2301  
SCOTTSDALE: 8767 E Via de Commercio, Suite 101, Scottsdale, AZ 85258 | [www.cpi.az.com](http://www.cpi.az.com)

**TYSON BREINHOLT**

D 480.966.7513  
M 602.315.7131  
TBREINHOLT@CPIAZ.COM

**CALEB ALLEN**

D 480.621.3290  
M 480.622.4174  
CALLEN@CPIAZ.COM

**JACK ELDER**

D 480.968.9618  
M 602.573.3210  
JELDER@CPIAZ.COM

The information contained herein has been obtained from various sources. We have no reason to doubt its accuracy; however, J & J Commercial Properties, Inc. has not verified such information and makes no guarantee, warranty or representation about such information. The prospective buyer or lessee should independently verify all dimensions, specifications, floor plans, and all information prior to the lease or purchase of the property. All offerings are subject to prior sale, lease, or withdrawal from the market without prior notice.

# INDUSTRIAL CONDO AVAILABLE FOR LEASE



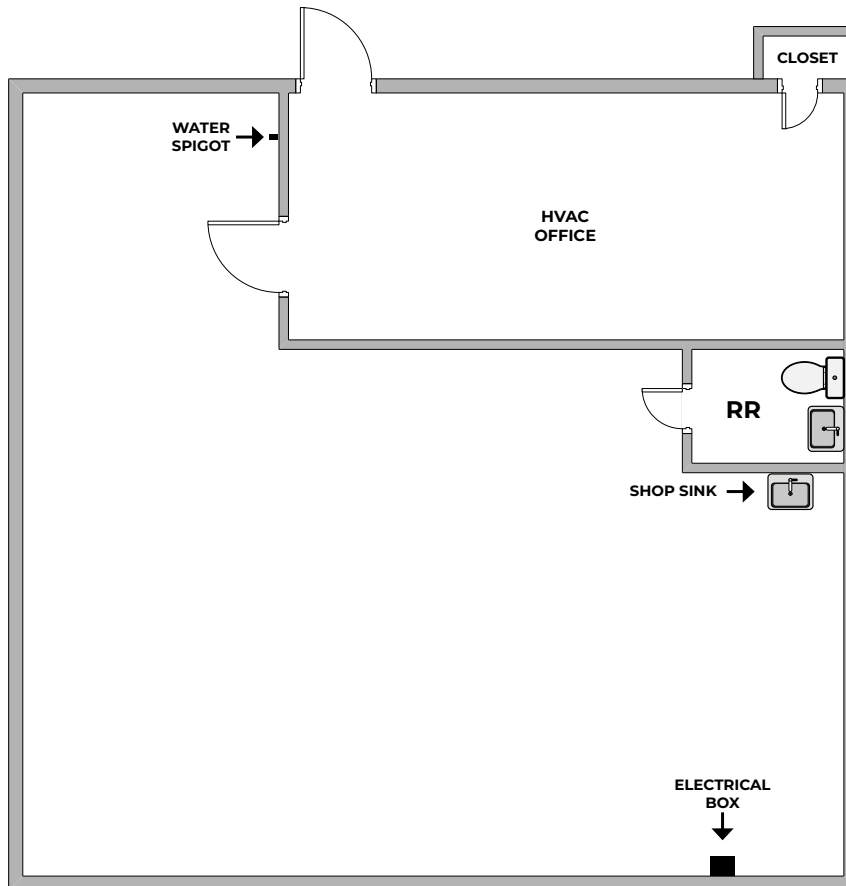
<b>Address</b>	300 N Pasadena St Gilbert, AZ 85233
<b>Building Size</b>	±9,304 SF
<b>Year Built</b>	2011
<b>Zoning</b>	LI, City of Gilbert
<b>Clear Height</b>	16'
<b>Project Near</b>	Elliot Rd & McQueen

## SPACES AVAILABLE

Suite #	Size	Lease Rate	Notes
104	±1,900 SF	\$1.40 NNN	Reception, Closet Storage, Restroom, Automatic Roll-Up Door
105	±2,948 SF	\$1.49 NNN	Includes 4 Offices, Restroom, Break Galley, Automatic Roll-Up Door, Outdoor Storage with 40'x9' Conex Box w/ Electrical, & HVAC

**Suite 104 & 105 are contiguous up to ±4,848 SF.**

**SUITE 104**



**SUITE 105**

