

**SALE**

# Allisonville Professional Center Suite 103

**10412 ALLISONVILLE ROAD, SUITE 103**

Fishers, IN 46038

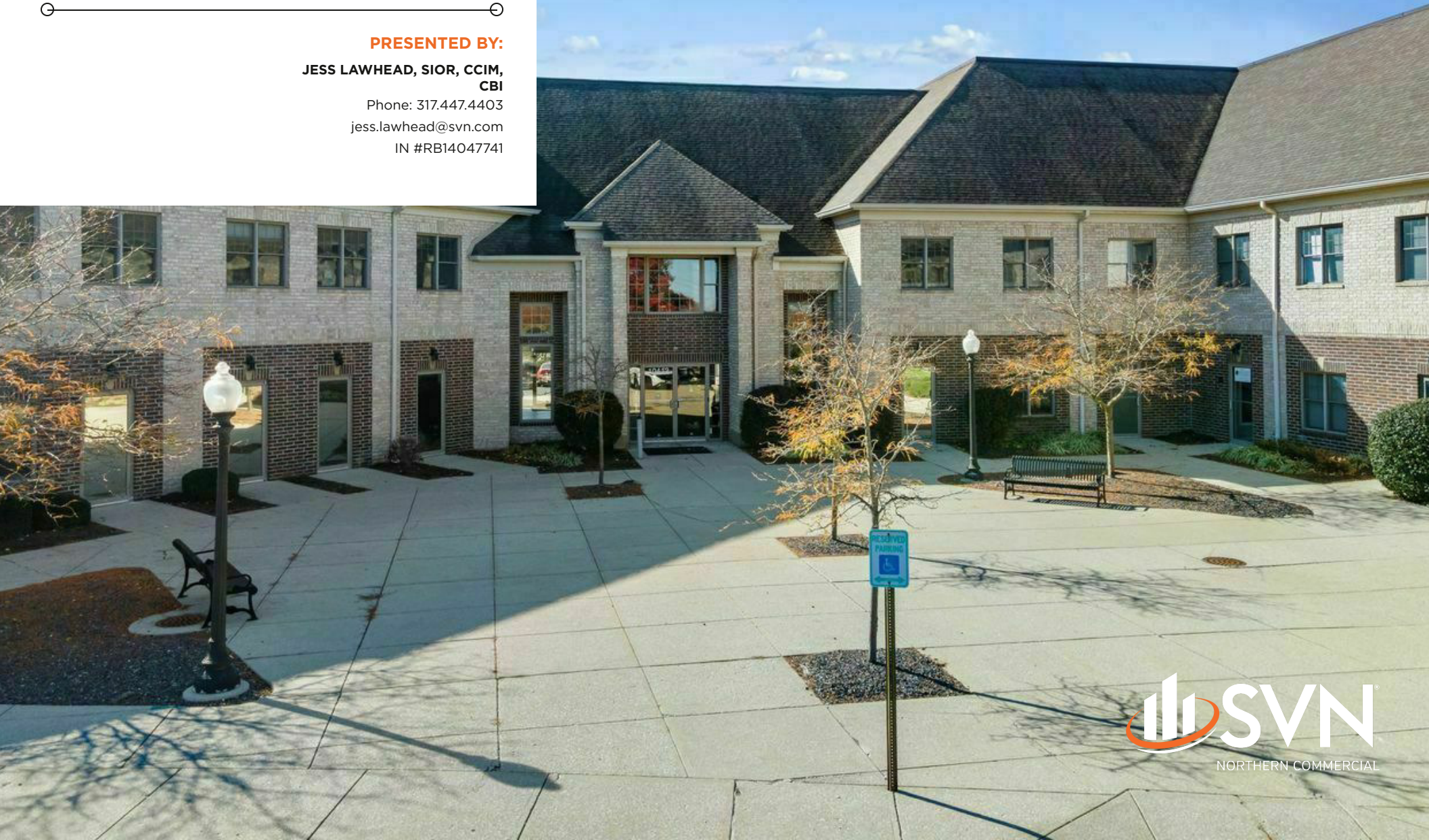
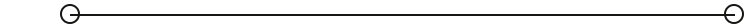
**PRESENTED BY:**

**JESS LAWHEAD, SIOR, CCIM,  
CBI**

Phone: 317.447.4403

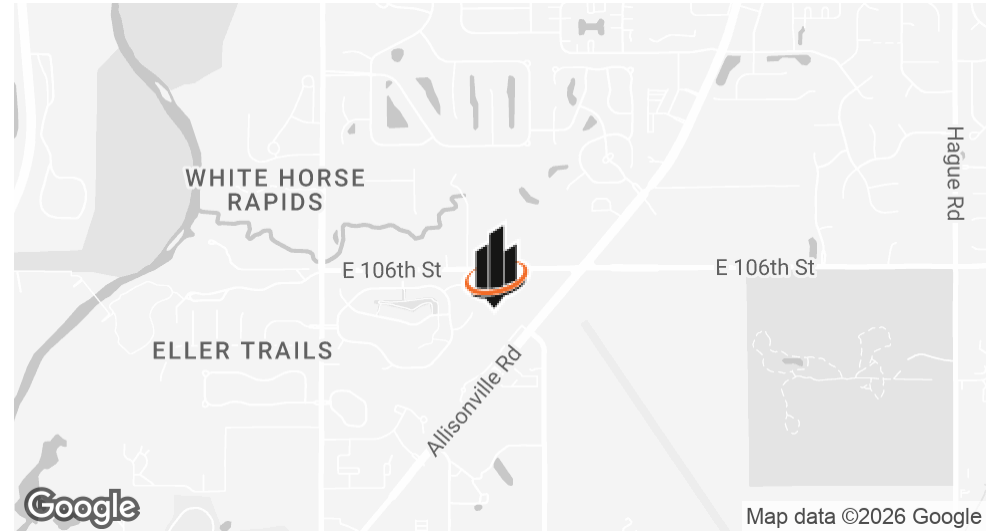
[jess.lawhead@svn.com](mailto:jess.lawhead@svn.com)

IN #RB14047741



NORTHERN COMMERCIAL

## PROPERTY SUMMARY



### OFFERING SUMMARY

<b>SALE PRICE:</b>	\$185,000
<b>AVAILABLE SF:</b>	611 SF
<b>LOT SIZE:</b>	0.53 Acres
<b>BUILDING SIZE:</b>	51,948 SF

### PROPERTY DESCRIPTION

SVN | Northern Commercial is pleased to present Suite 103, a 611 RSF turnkey office suite. The space is ready for immediate occupancy. The suite is located within a professionally managed building. Suite 103 has its own exterior entrance.

### PROPERTY HIGHLIGHTS

- Prime Fishers location
- 611 RSF turnkey office suite
- Dedicated on-site parking for tenants and patients
- Professionally managed building
- Suite 103 has its own exterior entrance

**JESS LAWHEAD, SIOR, CCIM, CBI**

O: 317.447.4403

jess.lawhead@svn.com

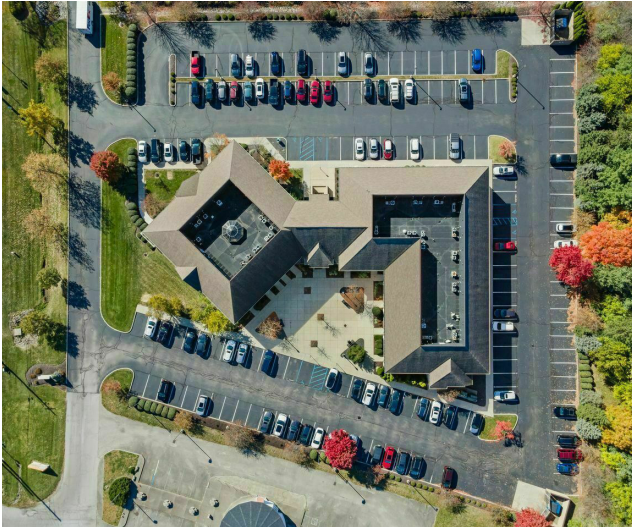
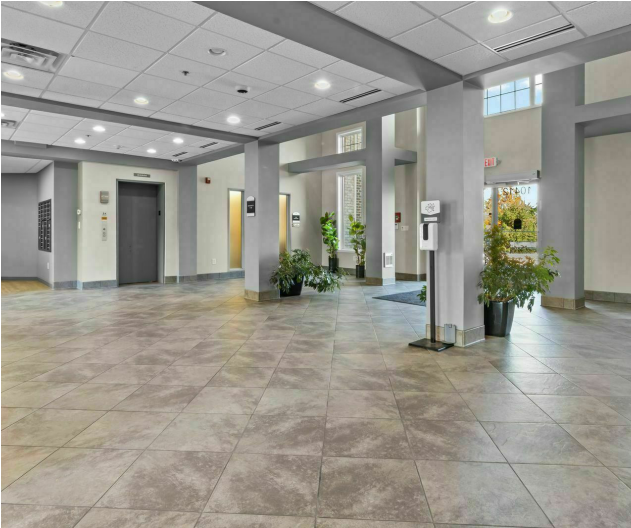
IN #RB14047741

## SUITE 103



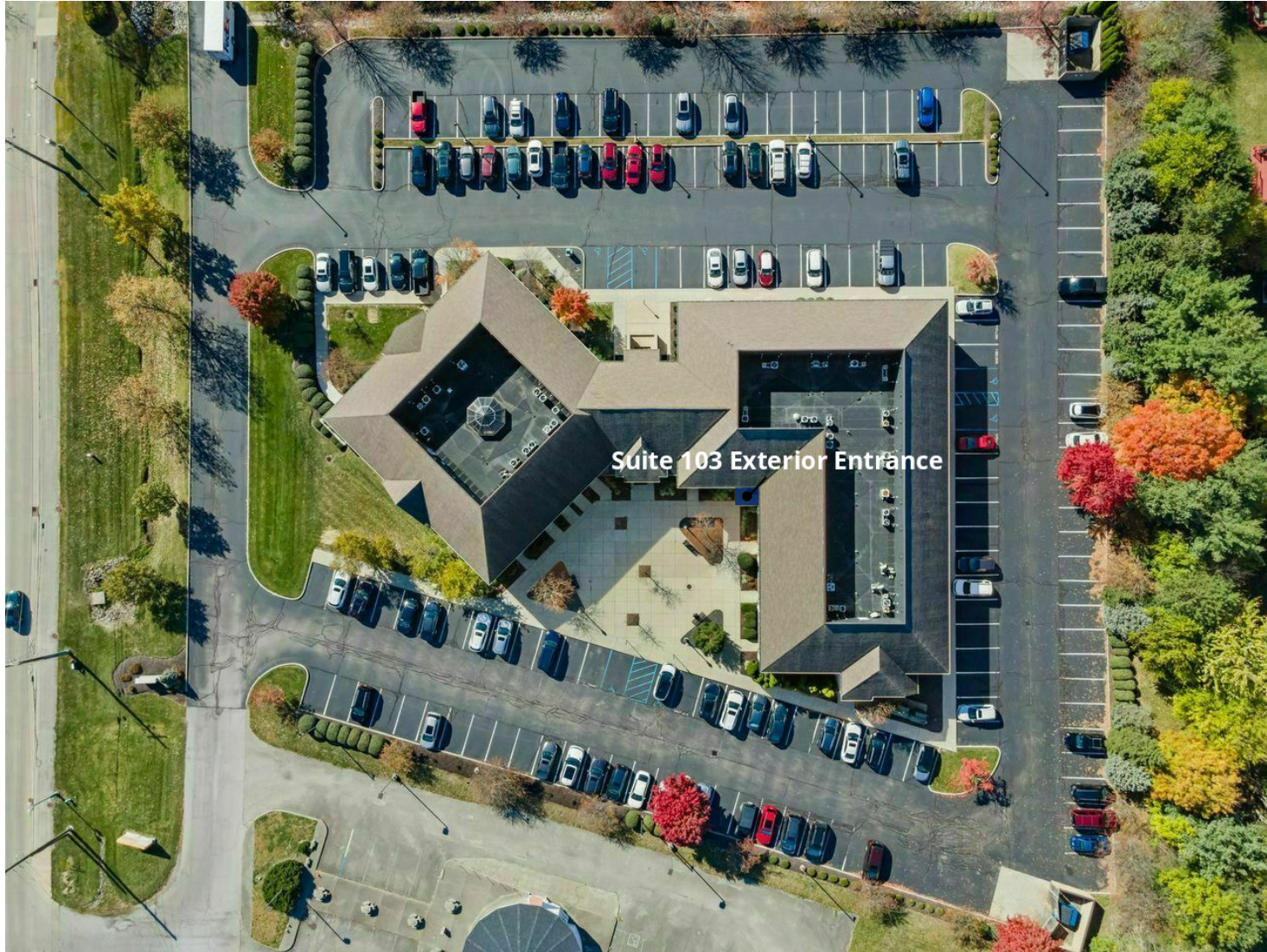
**JESS LAWHEAD, SIOR, CCIM, CBI**  
O: 317.447.4403  
jess.lawhead@svn.com  
IN #RB14047741

**ADDITIONAL PHOTOS**



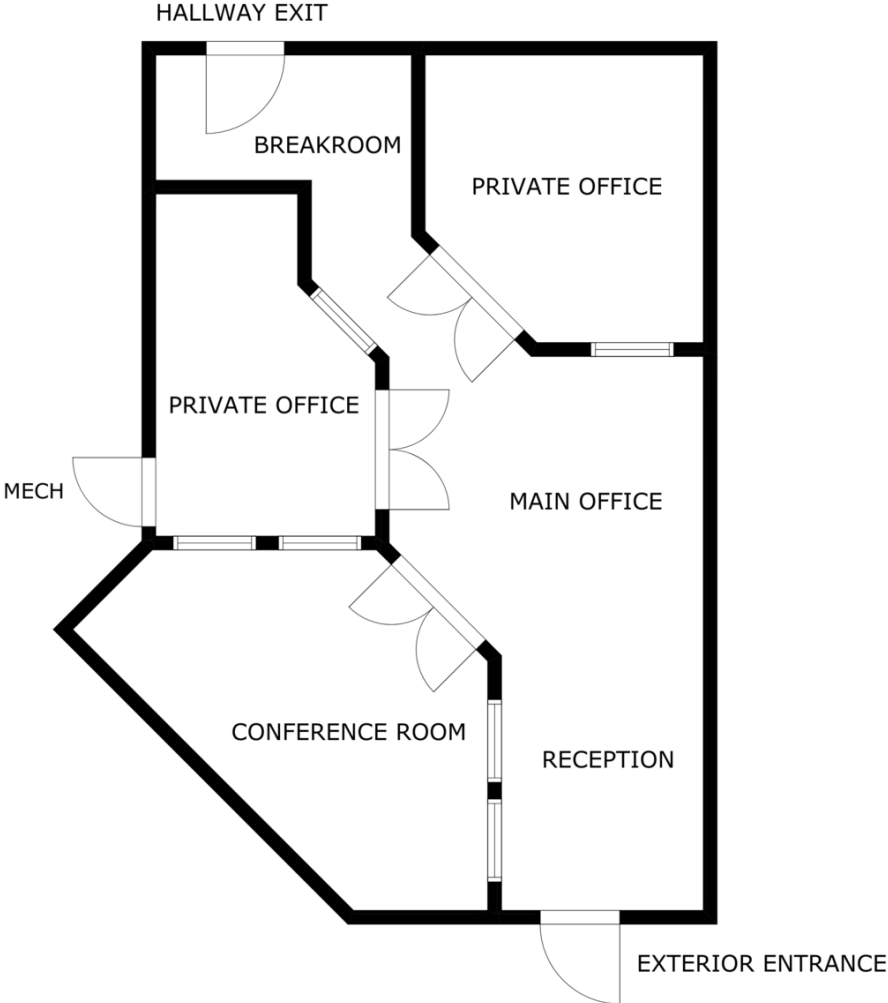
**JESS LAWHEAD, SIOR, CCIM, CBI**  
O: 317.447.4403  
jess.lawhead@svn.com  
IN #RB14047741

# PLANS



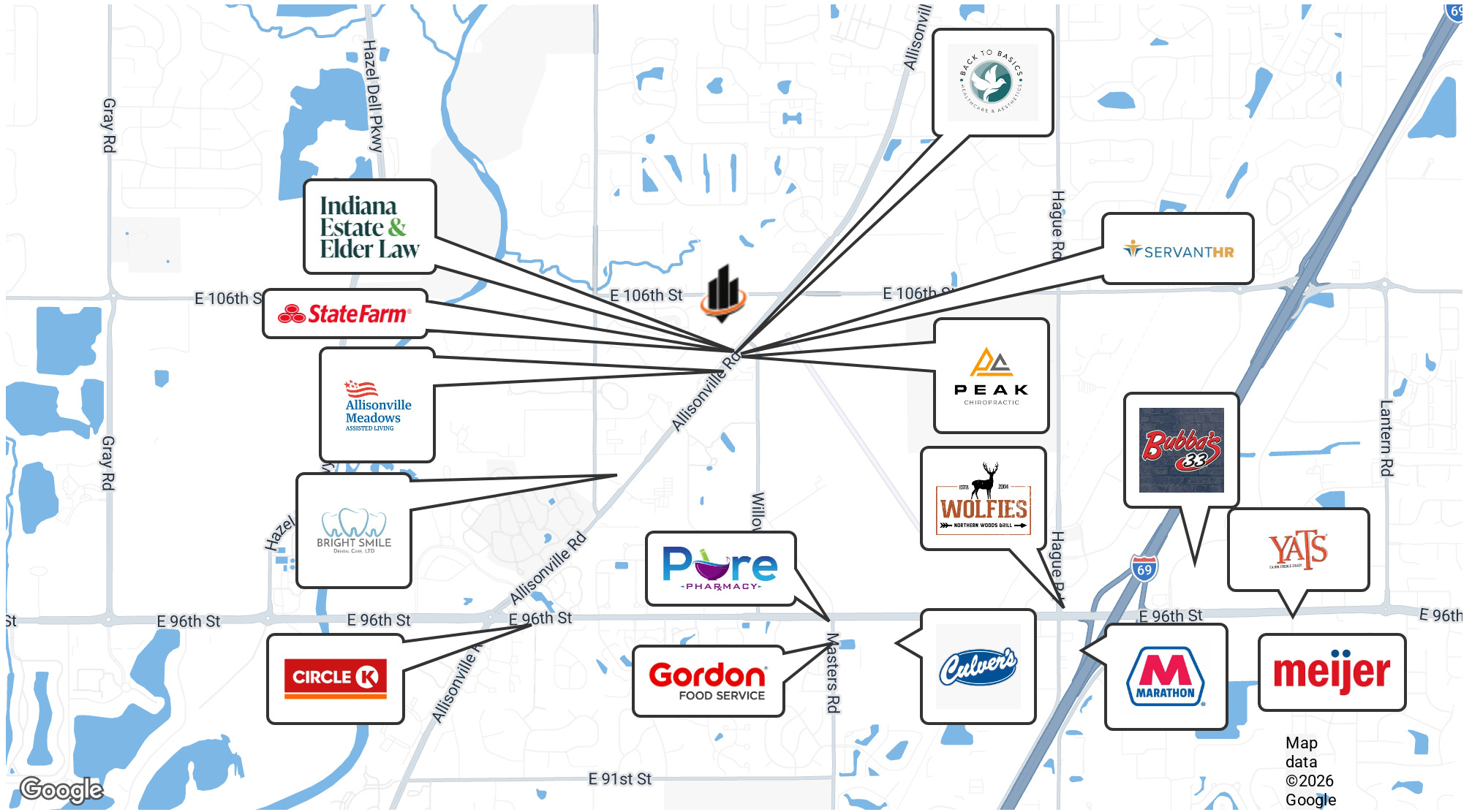
**JESS LAWHEAD, SIOR, CCIM, CBI**  
O: 317.447.4403  
jess.lawhead@svn.com  
IN #RB14047741

**PLANS**



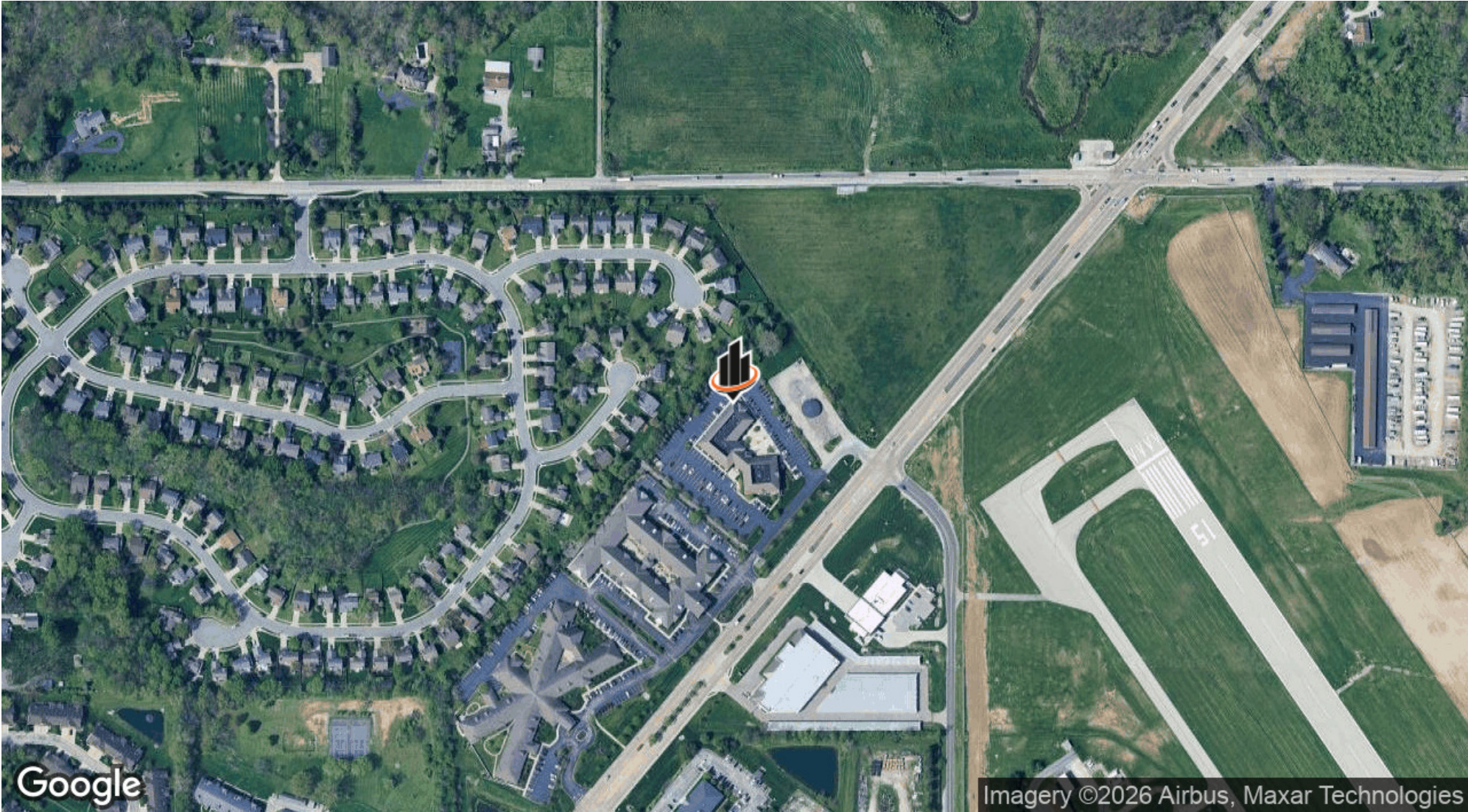
**JESS LAWHEAD, SIOR, CCIM, CBI**  
O: 317.447.4403  
jess.lawhead@svn.com  
IN #RB14047741

# RETAILER MAP



**JESS LAWHEAD, SIOR, CCIM, CBI**  
 O: 317.447.4403  
 jess.lawhead@svn.com  
 IN #RB14047741

**LOCATION MAP**



**JESS LAWHEAD, SIOR, CCIM, CBI**  
O: 317.447.4403  
jess.lawhead@svn.com  
IN #RB14047741