



956 TURNPIKE ST

CANTON, MA

FOR LEASE | TWO 6,500 SF INDUSTRIAL UNITS ON 2.25 AC

MATTY DROUILLARD
STEPHEN FLYNN
JAMES STUBBLEBINE

425.691.7881
781.917.7026
617.592.3388

matty@stubblebinecompany.com
sfflynn@stubblebinecompany.com
james@stubblebinecompany.com



THE
STUBBLEBINE
COMPANY

CORFAC INTERNATIONAL

PROPERTY SUMMARY



PROPERTY DESCRIPTION

Two 6,500 SF Industrial Units on 2.25 AC for Lease

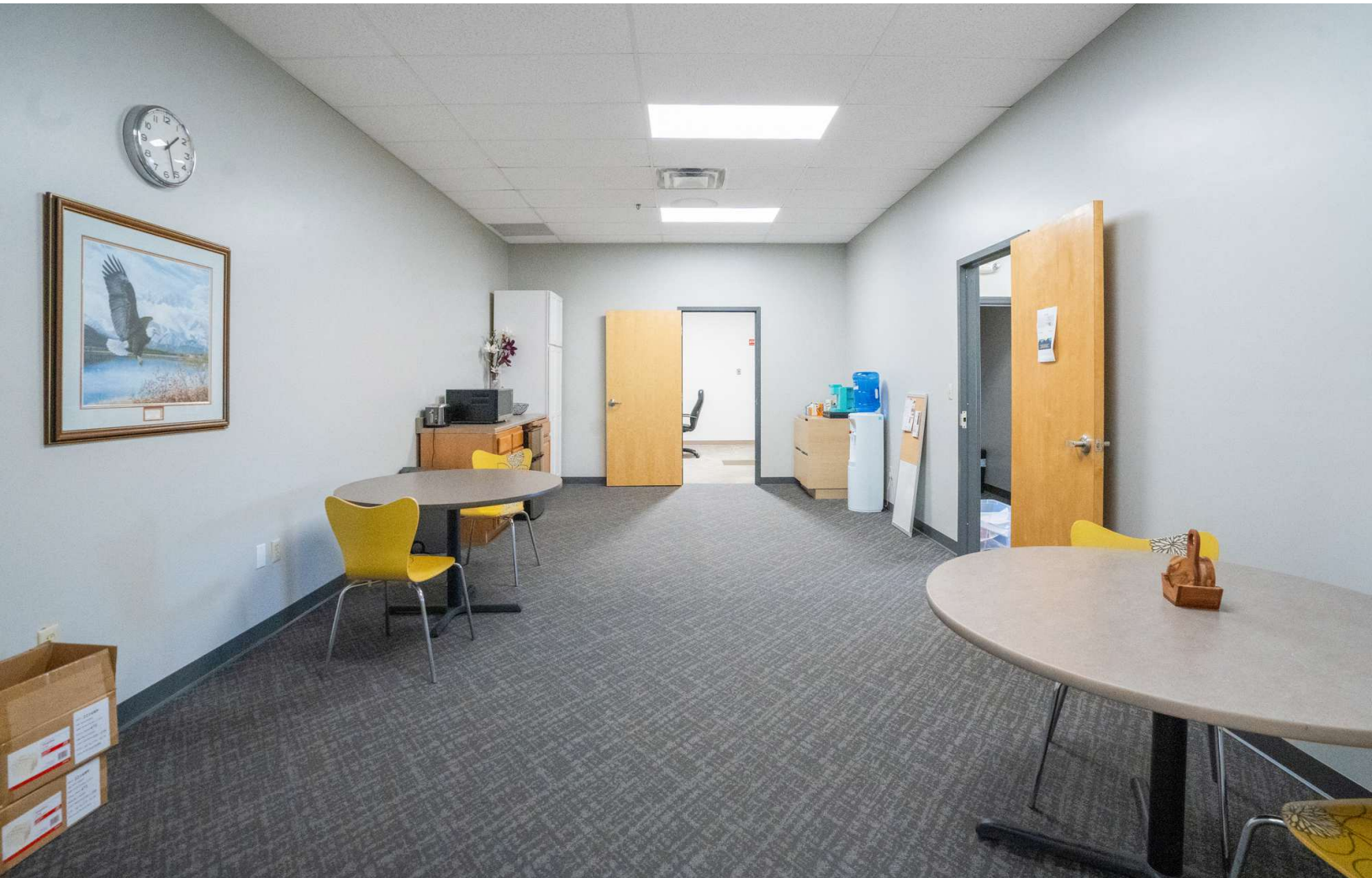
- Suite 1 is available now
- Suite 3 is available in March 2025

DEMOGRAPHICS	3 MILES	5 MILES	10 MILES
Total Households	22,723	51,644	293,832
Total Population	58,827	136,980	774,455
Average HH Income	\$152,033	\$148,714	\$145,410

PROPERTY SPECIFICATIONS

	Two (2) 6,500 SF Units comprised of:
	• 3,500 SF +/- Warehouse space
	• 1,500 +/- SF Flex
	• 1,500 SF +/- Office
Available SF:	
Lot Size:	2.25 AC
Available Units:	2
Clear Height:	24'
Loading:	Two (2) docks/unit
Power:	600a/277 - 480v; 3 phase, 4 wire
Construction:	Masonry
Sprinklers:	Wet
Lease Rate:	Market







INTERSTATE
93

24

138



139

24



956 TURNPIKE ST CANTON, MA

FOR LEASE | TWO 6,500 SF INDUSTRIAL UNITS ON 2.25 AC

MATTY DROUILLARD

425.691.7881

matty@stubblebinecompany.com

STEPHEN FLYNN

781.917.7026

sflynn@stubblebinecompany.com

JAMES STUBBLEBINE

617.592.3388

james@stubblebinecompany.com

We obtained the information above from sources we believe to be reliable. However, we have not verified its accuracy and make no guarantee, warranty or representation about it. It is submitted subject to the possibility of errors, omissions, change of price, rental or other conditions, prior sale, lease or financing, or withdrawal without notice. We include projections, opinions, assumptions or estimates for example only, and they may not represent current or future performance of the property. You and your tax and legal advisors should conduct your own investigation of the property and transaction.



THE
STUBBLEBINE
COMPANY

CORFAC INTERNATIONAL