

# LAND FOR SALE

## 7720 BELAIR ROAD

Baltimore, MD 21236  
Available: 3.63 ACRES

### HUGE PRICE REDUCTION!!



#### LISTING DATA

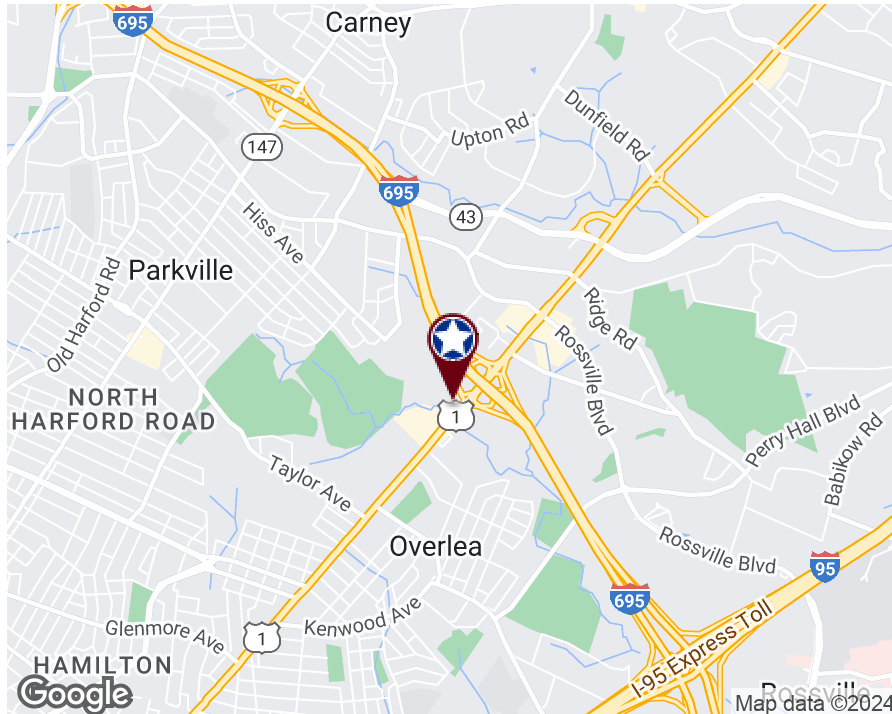
**PRICE:** \$775,000 (Negotiable)  
**AVAILABLE:** 3.63 Acres  
**OFFICE SF:** +/- 4,000 SF  
**ZONING:** BL/DR 5.5

#### PROPERTY INFORMATION

**COUNTY:** Baltimore  
**MARKET:** Baltimore  
**SUBMARKET:** Baltimore County East

#### PROPERTY HIGHLIGHTS

- ± 4,000 SF Former Office Building
- 3.63 Acres
- Zoned BL/DR 5.5
- Belair Road Frontage is Zoned BL with DR 5.5 in the Rear
- 228' of Frontage on Belair Road (Route 1)



#### Gideon Price

Associate

443.841.4961

[gprice@lee-associates.com](mailto:gprice@lee-associates.com)

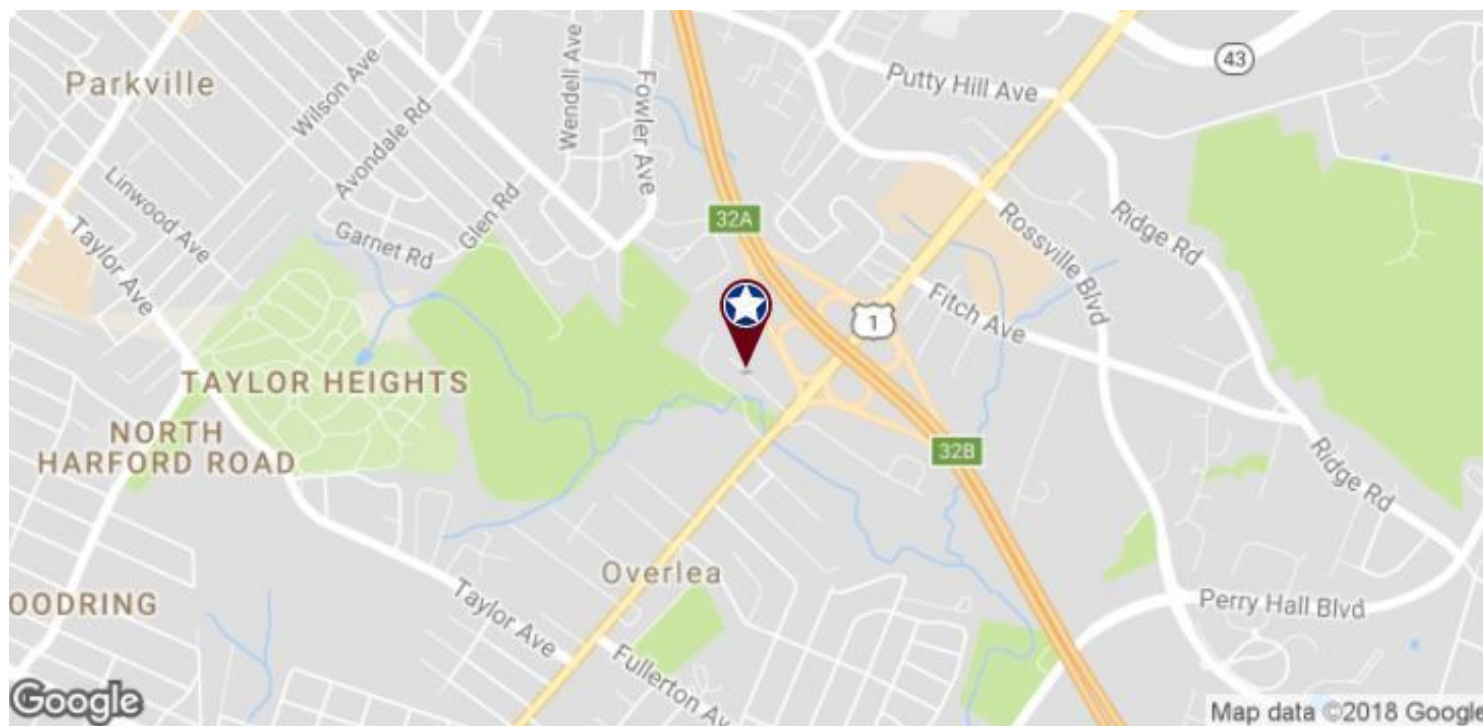
All information furnished regarding property for sale, rental or financing is from sources deemed reliable, but no warranty or representation is made to the accuracy thereof and same is submitted to errors, omissions, change of price, rental or other conditions prior to sale, lease or financing or withdrawal without notice. No liability of any kind is to be imposed on the broker herein.



# LAND FOR SALE 7720 BELAIR ROAD

Baltimore, MD 21236  
Available: 3.63 ACRES

**LEE & ASSOCIATES**  
COMMERCIAL REAL ESTATE SERVICES



**Gideon Price**  
Associate  
443.841.4961  
[gprice@lee-associates.com](mailto:gprice@lee-associates.com)

All information furnished regarding property for sale, rental or financing is from sources deemed reliable, but no warranty or representation is made to the accuracy thereof and same is submitted to errors, omissions, change of price, rental or other conditions prior to sale, lease or financing or withdrawal without notice. No liability of any kind is to be imposed on the broker herein.

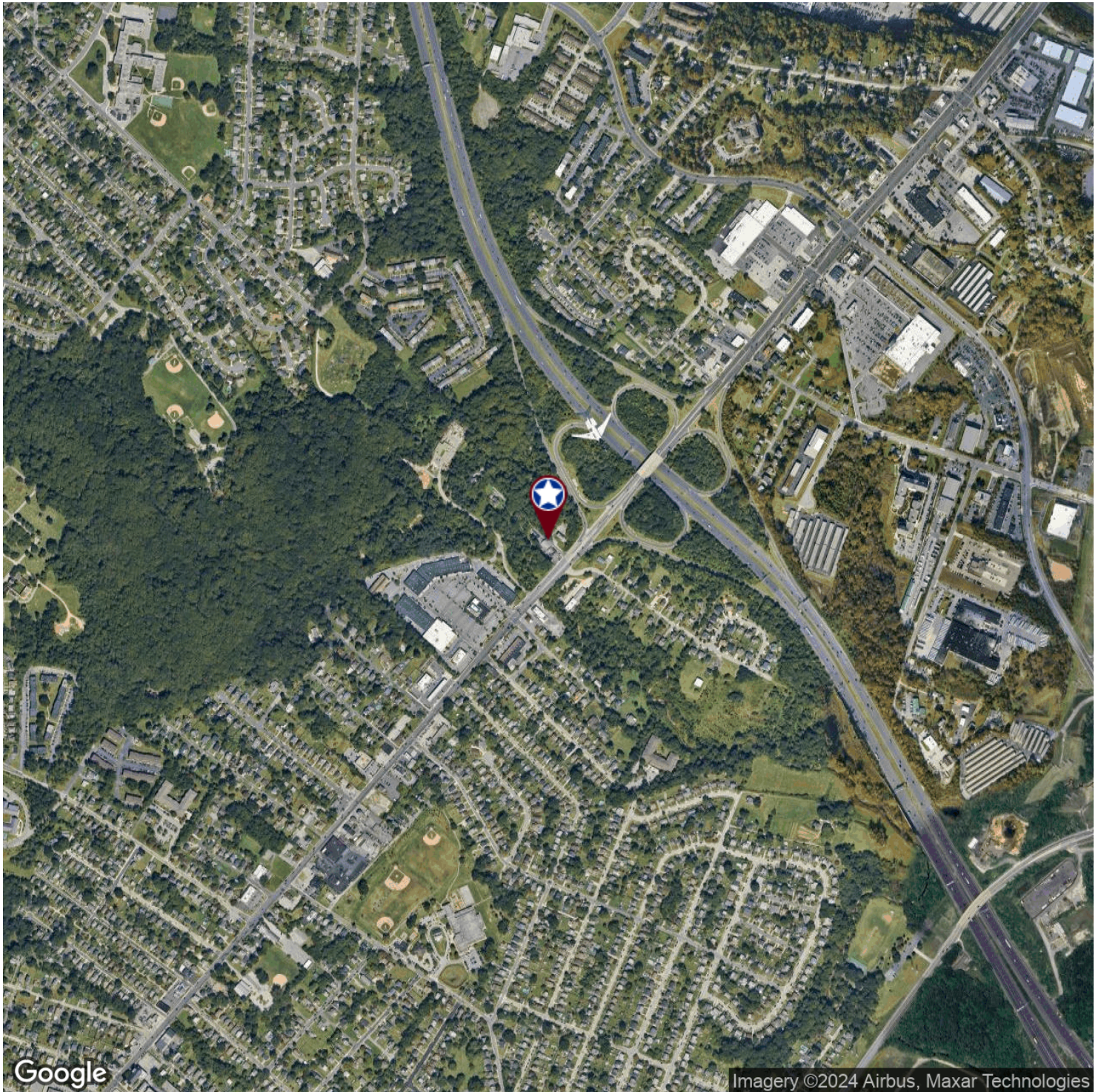


# LAND FOR SALE 7720 BELAIR ROAD

Baltimore, MD 21236

Available: 158,123 SF

**LEE & ASSOCIATES**  
COMMERCIAL REAL ESTATE SERVICES



**Gideon Price**  
Associate  
443.841.4961  
[gprice@lee-associates.com](mailto:gprice@lee-associates.com)

All information furnished regarding property for sale, rental or financing is from sources deemed reliable, but no warranty or representation is made to the accuracy thereof and same is submitted to errors, omissions, change of price, rental or other conditions prior to sale, lease or financing or withdrawal without notice. No liability of any kind is to be imposed on the broker herein.

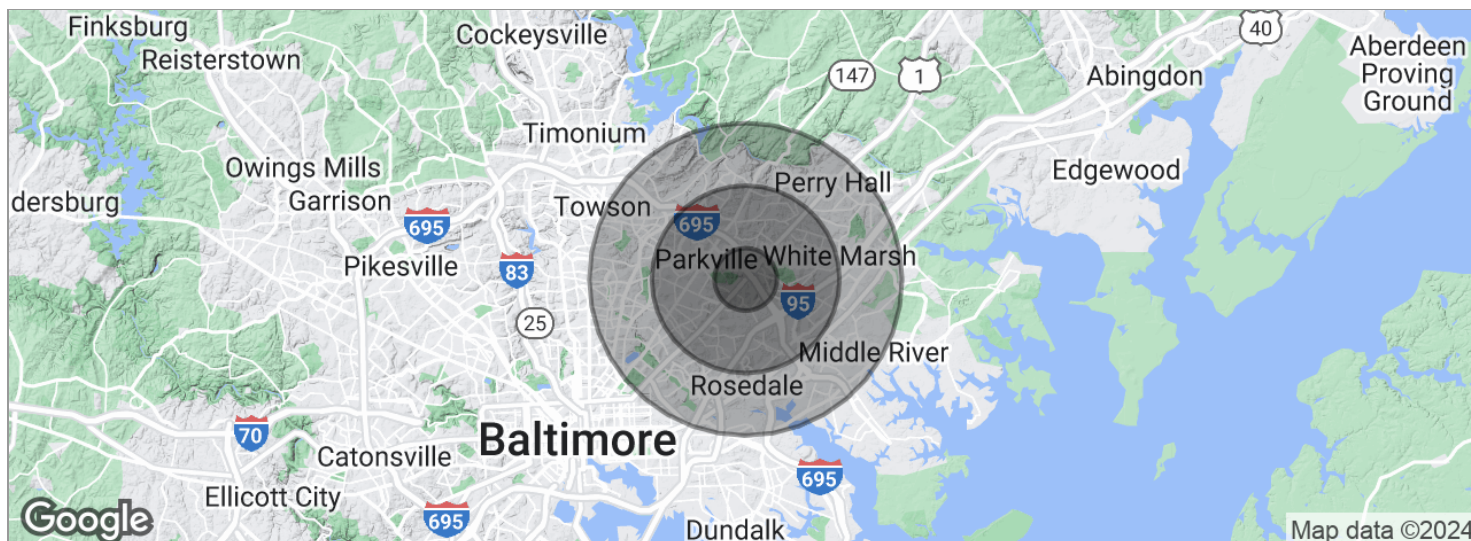


# LAND FOR SALE

## 7720 BELAIR ROAD

Baltimore, MD 21236

Available: 3.63 ACRES SF



### POPULATION

	1 MILE	3 MILES	5 MILES
Total population	11,819	135,662	334,694
Median age	38.3	38.3	37.5
Median age (Male)	36.2	36.3	35.5
Median age (Female)	40.6	40.0	39.1

### HOUSEHOLDS & INCOME

	1 MILE	3 MILES	5 MILES
Total households	4,979	54,340	133,852
# of persons per HH	2.4	2.5	2.5
Average HH income	\$70,590	\$69,257	\$66,490
Average house value	\$244,791	\$244,892	\$244,381

\* Demographic data derived from 2020 ACS - US Census

**Gideon Price**  
Associate  
443.841.4961  
gprice@lee-associates.com

All information furnished regarding property for sale, rental or financing is from sources deemed reliable, but no warranty or representation is made to the accuracy thereof and same is submitted to errors, omissions, change of price, rental or other conditions prior to sale, lease or financing or withdrawal without notice. No liability of any kind is to be imposed on the broker herein.