

3550 Arundell Circle

Ventura, California 93003

Property Highlights

- Easy Access to 101 and 126 Freeways
- Flexible M1 Zoning
- On Quiet Cul-De-Sac
- 1.26 acre portion of larger lot

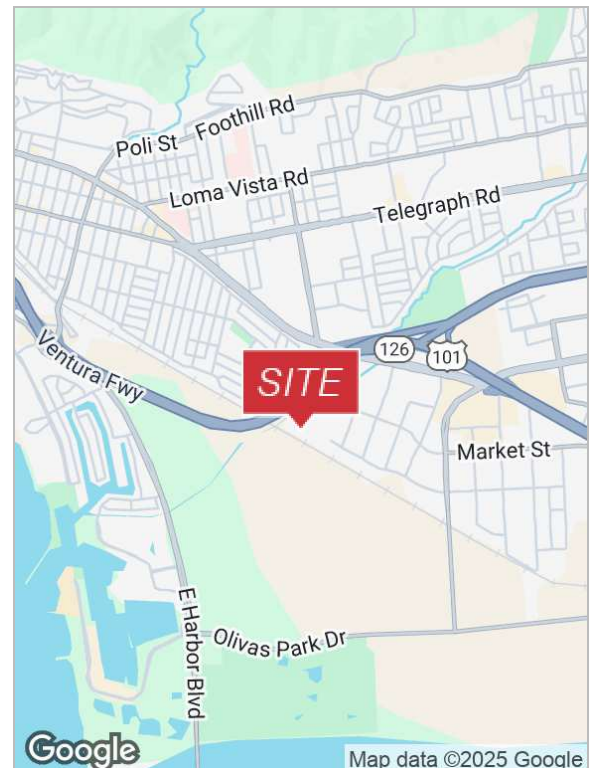
Property Description

Ideal equipment/contractor storage yards

Near Ventura Harbor

For RV, Fleet Storage, Oil Service, Cargo Container Uses

Monthly Lease Rate: \$13,721 (\$0.25 psf,) Gross



For more information

Fred Ferro

O: 805.288.5469 | C: 805.660.1727

fferro@naicapital.com | CalDRE #00873828

No warranty, express or implied, is made as to the accuracy of the information contained herein. This information is submitted subject to errors, omissions, change of price, rental or other conditions, withdrawal without notice, and is subject to any special listing conditions imposed by our principals. Cooperating brokers, buyers, tenants and other parties who receive this document should not rely on it, but should use it as a starting point of analysis, and should independently confirm the accuracy of the information contained herein through a due diligence review of the books, records, files and documents that constitute reliable sources of the information described herein. Logos are for identification purposes only and may be trademarks of their respective companies. NAI Capital Commercial, Inc. CAL DRE Lic. #02130474

NAI Capital

300 Esplanade Drive, Suite 470

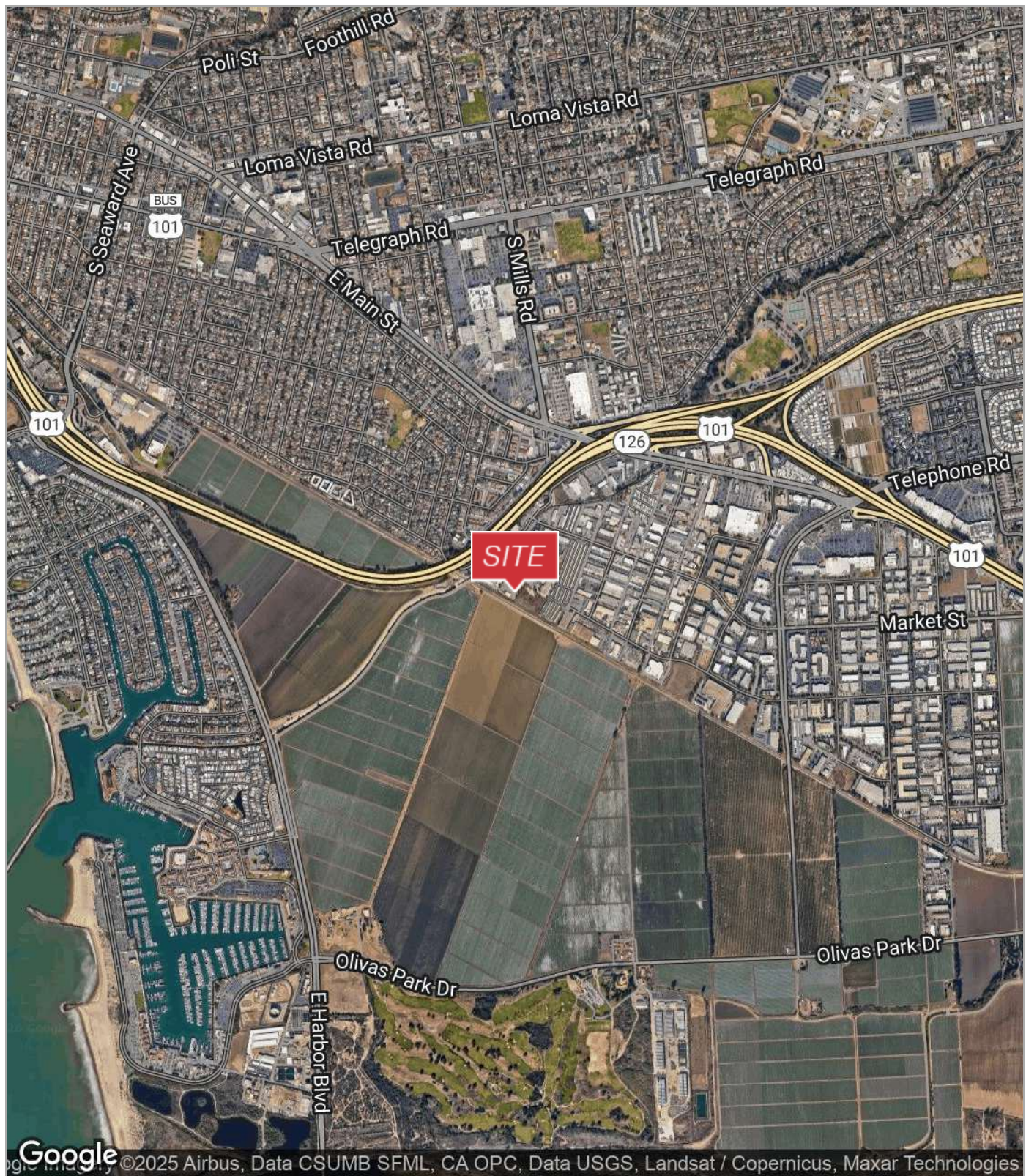
Oxnard, CA 93036

805.278.1400

naicapital.com

For Lease

3550 Arundell Circle



Fred Ferro
805.288.5469
C: 805.660.1727
fferro@naicapital.com
CalDRE #00873828

NAI Capital
COMMERCIAL REAL ESTATE SERVICES, WORLDWIDE