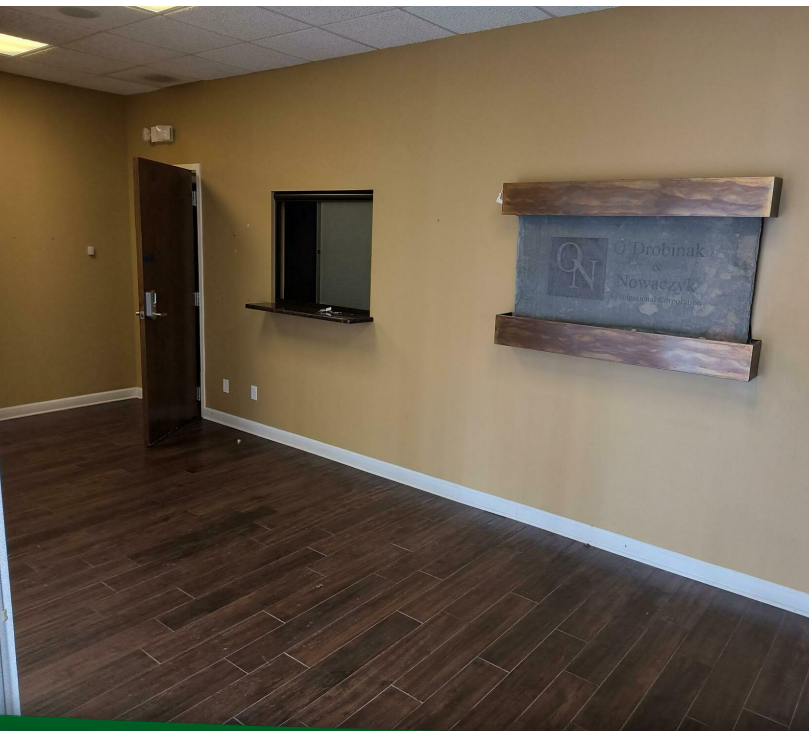


1806 ROBINHOOD BLVD, SCHERERVILLE, IN 46375



For more information, please contact:

ANTONY MIOCIC
Director of Office Group
219.864.0200
amiocic@latitudeco.com

CHANDLER KIMMEL
219.864.0200
ckimmel@latitudeco.com



LATITUDE
COMMERCIAL
REAL ESTATE SERVICES

LATITUDECO.COM

LEASING 1806 ROBINHOOD BLVD

1806 Robinhood Blvd, Schererville, IN 46375



EXECUTIVE SUMMARY



OFFERING SUMMARY

Available SF: 3,100 - 7,014 SF

Lease Rate: \$16.00 SF/yr (NNN)

Lot Size: 1.82 Acres

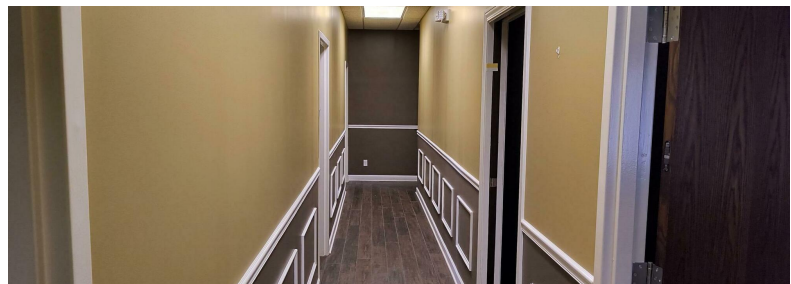
Year Built: 1979

Building Size: 7014 SF

Zoning: PO

PROPERTY HIGHLIGHTS

- 3,100sf former law firm space for lease
- Additional 4,000sf available build to suit
- End cap with drive-thru available
- Large monument signage available
- Property is located at a stop light intersection on US 30



ANTONY MIOCIC
Director of Office Group
219.864.0200
amiocic@latitudeco.com

CHANDLER KIMMEL
219.864.0200
ckimmel@latitudeco.com

LEASING 1806 ROBINHOOD BLVD

1806 Robinhood Blvd, Schererville, IN 46375



PROPERTY DESCRIPTION

PROPERTY DESCRIPTION

High visibility space available for lease at 1806 Robinhood Blvd, Schererville, IN. This exceptional property offers a 3,100sf former law firm space for lease, with the option for an additional 4,000sf build to suit. The end cap with drive-thru availability and large monument signage provide unparalleled visibility and convenience. Situated at a stop light intersection on US 30, this sought-after location offers prime exposure for your business.

LOCATION DESCRIPTION

This property is located at a stoplight intersection on the southwest corner of US 30 and Robinhood Boulevard in Schererville. Schererville is a town in St. John Township, Lake County, Indiana, United States. The population was 29,646 at the 2020 census. It is a suburb of Chicago, located 30 miles south of the city.



ANTONY MIOCIC
Director of Office Group
219.864.0200
amiocic@latitudeco.com

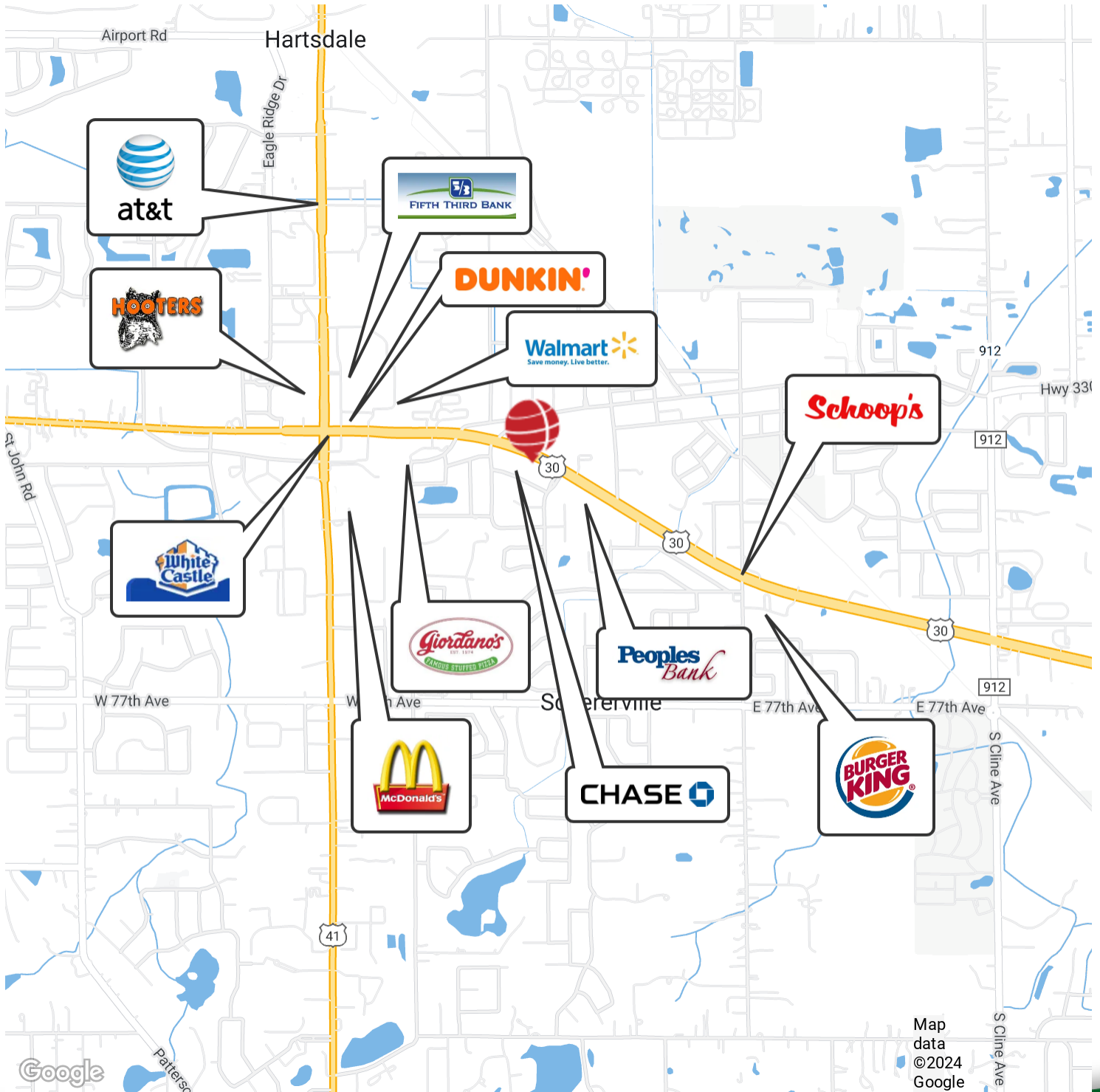
CHANDLER KIMMEL
219.864.0200
ckimmel@latitudeco.com

LEASING 1806 ROBINHOOD BLVD

1806 Robinhood Blvd, Schererville, IN 46375



RETAILER MAP



ANTONY MIOCIC
Director of Office Group
219.864.0200
amiocic@latitudeco.com

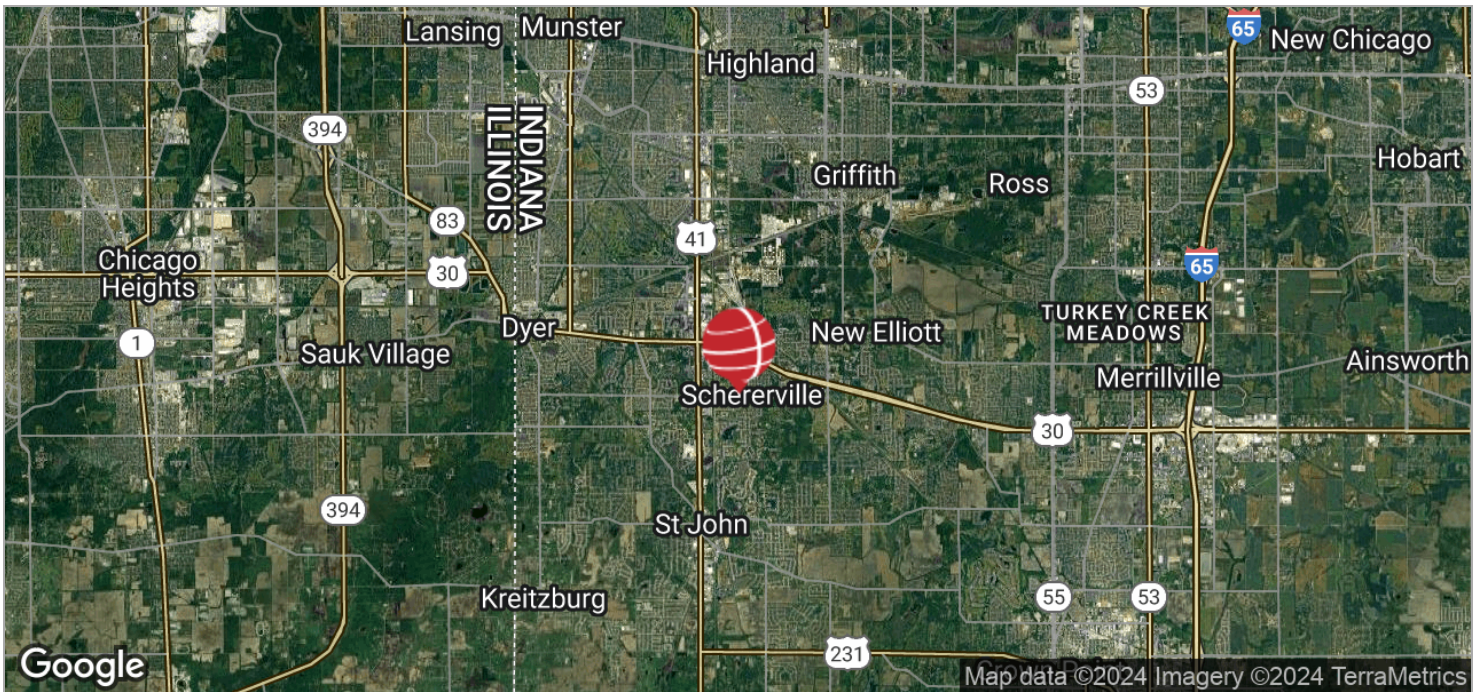
CHANDLER KIMMEL
219.864.0200
ckimmel@latitudeco.com

LEASING 1806 ROBINHOOD BLVD

1806 Robinhood Blvd, Schererville, IN 46375



LOCATION MAPS



ANTONY MIOCIC
Director of Office Group
219.864.0200
amiocic@latitudeco.com

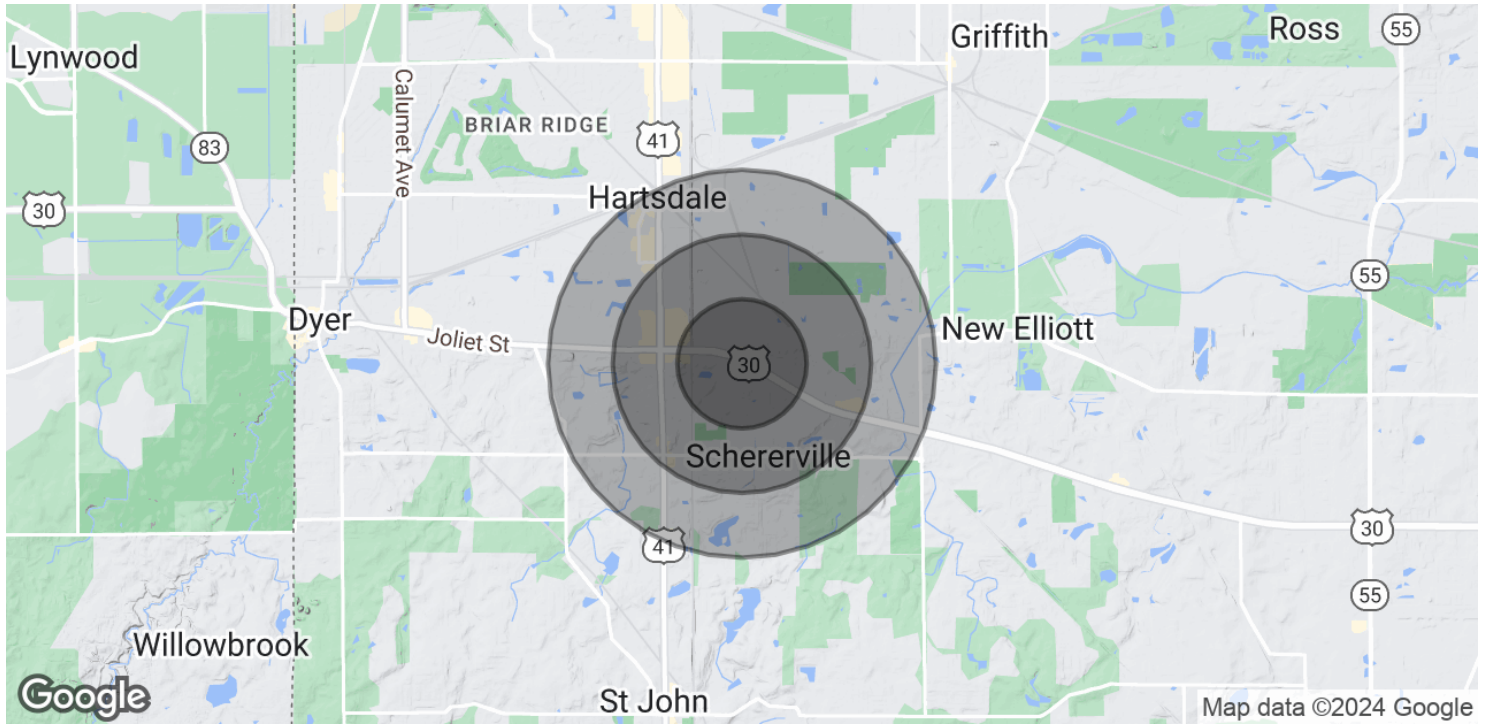
CHANDLER KIMMEL
219.864.0200
ckimmel@latitudeco.com

LEASING 1806 ROBINHOOD BLVD

1806 Robinhood Blvd, Schererville, IN 46375



DEMOGRAPHICS MAP & REPORT



POPULATION

	0.5 MILES	1 MILE	1.5 MILES
Total Population	1,700	6,202	11,889
Average Age	41.5	41.3	43.7
Average Age (Male)	38.1	39.7	43.0
Average Age (Female)	46.0	43.3	44.7

HOUSEHOLDS & INCOME

	0.5 MILES	1 MILE	1.5 MILES
Total Households	734	2,831	5,263
# of Persons per HH	2.3	2.2	2.3
Average HH Income	\$89,463	\$85,589	\$93,064
Average House Value	\$212,641	\$226,340	\$232,142

2020 American Community Survey (ACS)

ANTONY MIOCIC
 Director of Office Group
 219.864.0200
 amiocic@latitudeco.com

CHANDLER KIMMEL
 219.864.0200
 ckimmel@latitudeco.com