



26081 AVENUE HALL

SANTA CLARITA, CA | 91355

Chris Jackson

CEO
818.933.2368
cjackson@naicapital.com
Cal DRE Lic #01255538

Eric Seidenglanz

Senior Vice President
818.815.2426
eseidenglanz@naicapital.com
Cal DRE Lic #01975684

PROPERTY SUMMARY	3
HIGHLIGHTS	4
LOCATION OVERVIEW	5
PROPERTY DETAILS	6
PROPERTY PHOTOS	7
FLOOR PLANS	9
AERIAL MAP	11
REGIONAL MAP	12

Contact

Chris Jackson

CEO
818.933.2368
cjackson@naicapital.com
Cal DRE Lic #01255538

Eric Seidenglanz

Senior Vice President
818.815.2426
eseidenglanz@naicapital.com
Cal DRE Lic #01975684

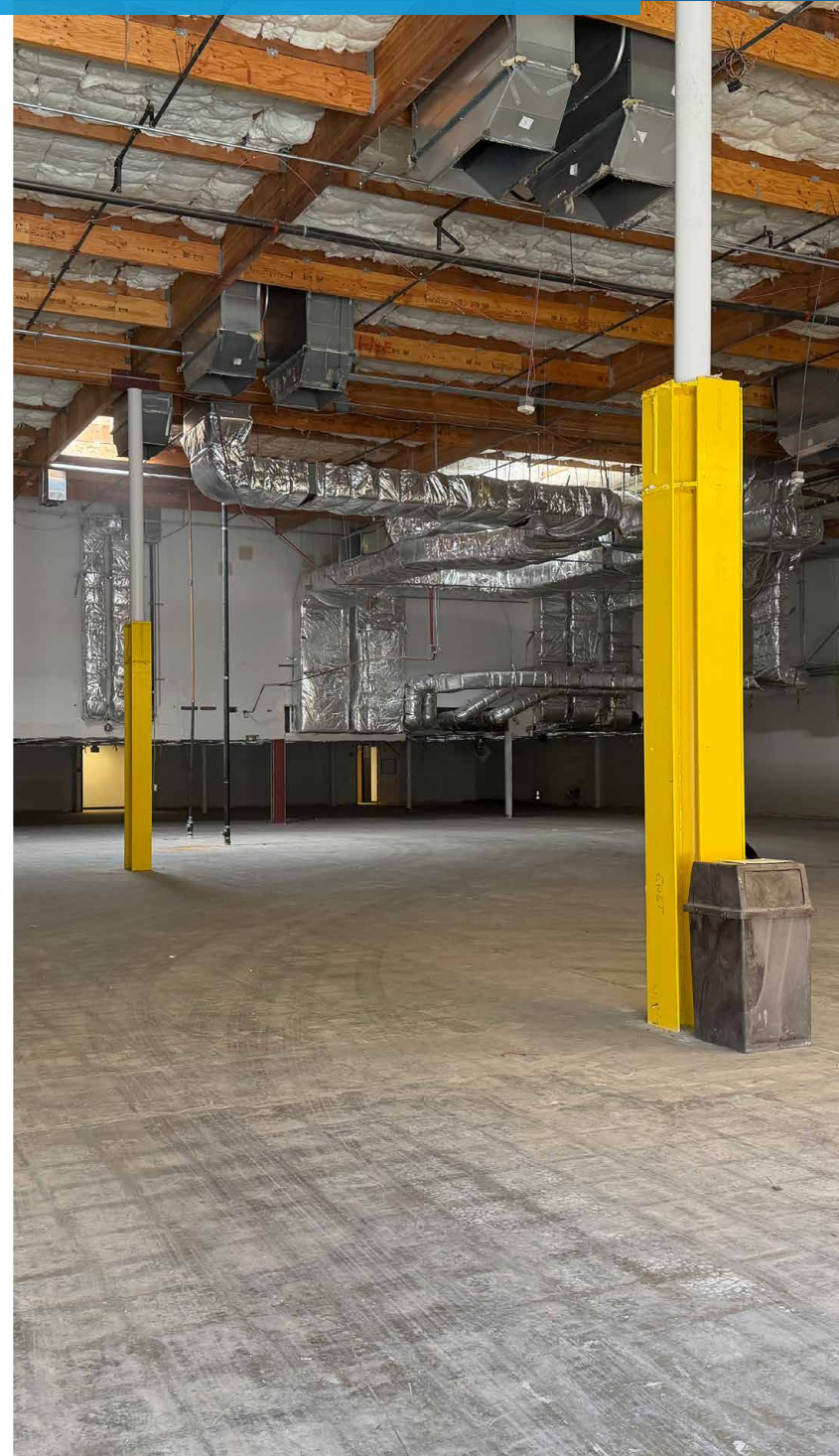


A PREMIER, HIGH-POWER FREESTANDING FACILITY

The Opportunity

Positioned in the heart of the Valencia Industrial Center, 26081 Avenue Hall represents a rare opportunity to lease a freestanding facility that blends heavy infrastructure with modern refinement. Ownership is currently underway with a comprehensive renovation of the entire site. This project is designed to increase functionality through the expansion of usable warehouse space and creating a versatile environment for advanced manufacturing, R&D, or corporate headquarters.





Unrivaled Power & Infrastructure

The building is engineered to support high-intensity operations that most standard industrial sites cannot accommodate.



Climate Control

The facility features 100% HVAC coverage, ensuring a temperature-controlled environment throughout the warehouse and office areas.



Power & Redundancy

A massive 4,000 Amps of 277/480V power is bolstered by a 2,000 Amp backup generator, providing the ultimate peace of mind for mission-critical operations.



Loading & Clearance

The space offers a 24' minimum warehouse clearance and is currently served by 3 grade-level doors, with the strategic potential to add dock-high loading to suit your logistics flow.



Private & Secure Logistics

The building is engineered to support high-intensity operations that most standard industrial sites cannot accommodate.



Unrivaled Power & Infrastructure

The property sits on an 3.34 acre private lot, offering a level of exclusivity and security rarely found in business parks. The expansive yard allows for flexible staging, or secure parking



The Santa Clarita Advantage

Located just minutes from the I-5 (Golden State) and SR-14 freeways, this site offers seamless connectivity to Greater Los Angeles, the San Fernando Valley, and northern distribution corridors.

THE SANTA CLARITA ADVANTAGE

Located just minutes from the I-5 (Golden State) and SR-14 freeways, this site offers seamless connectivity to Greater Los Angeles, the San Fernando Valley, and northern distribution corridors.

Choosing Santa Clarita is a strategic financial move. As one of the most business-friendly cities in the region, Santa Clarita offers:

- ✓ **Lower Overhead:**
No Gross Receipts Tax and no Utility User Tax.
- ✓ **Simplified Growth:**
A concierge-style permit process designed to help businesses scale quickly.
- ✓ **Talent Retention:**
Proximity to master-planned residential communities and a highly skilled local workforce.



PROPERTY DETAILS



Unit Size

56,066 SF



Lease Rate

\$81,295.00



Lease Rate/SF

\$1.45



Operating Expenses

\$18,391.00



Operating Expenses/SF

\$0.32



Office SF

TBD



Clear Height

24'



Ground Level Doors

Three (3)



Power

4,000 Amps of 277/480 V 3 Phase Power
2,000 Amp Backup Generator



Parking Spaces

190



Sprinklered

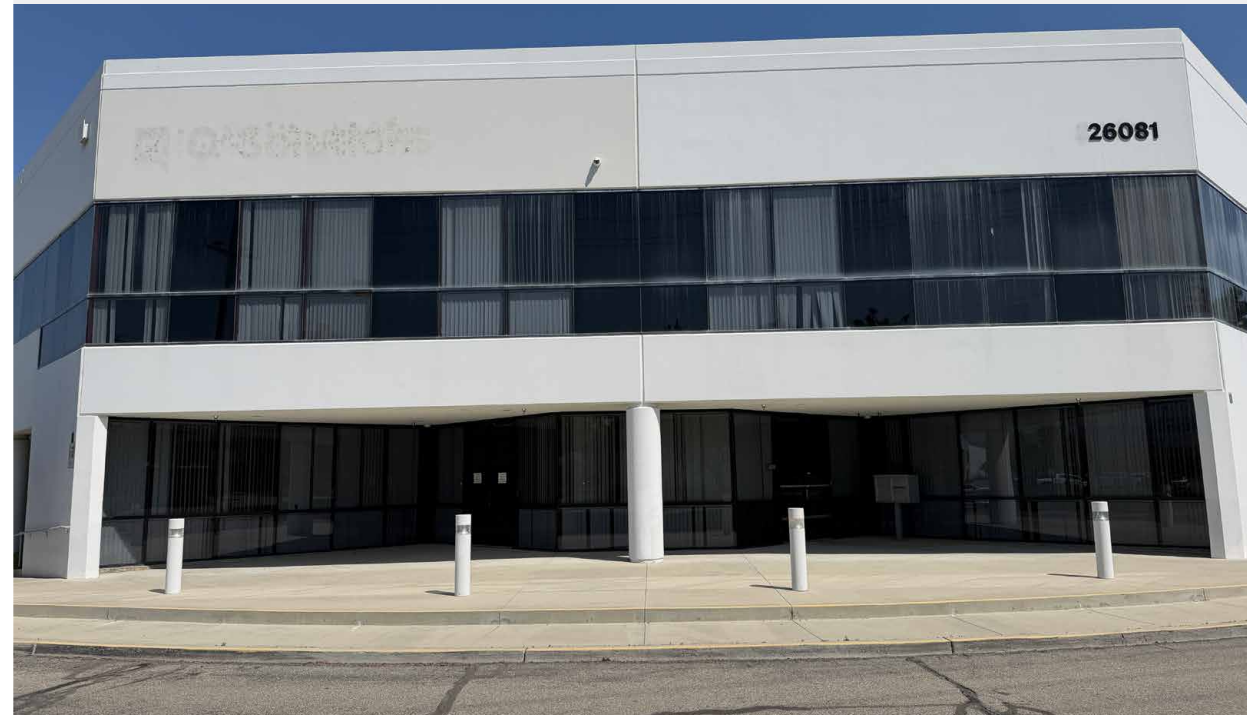
Yes

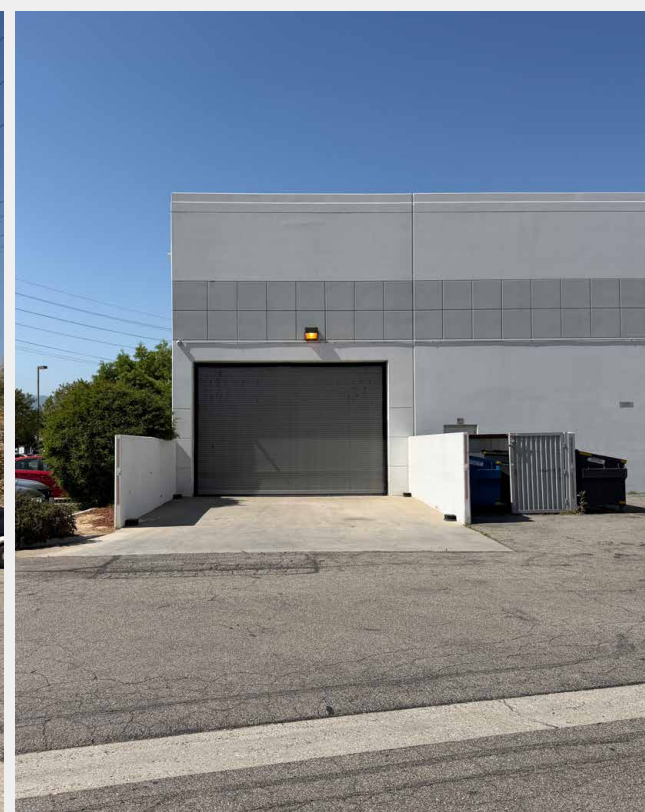


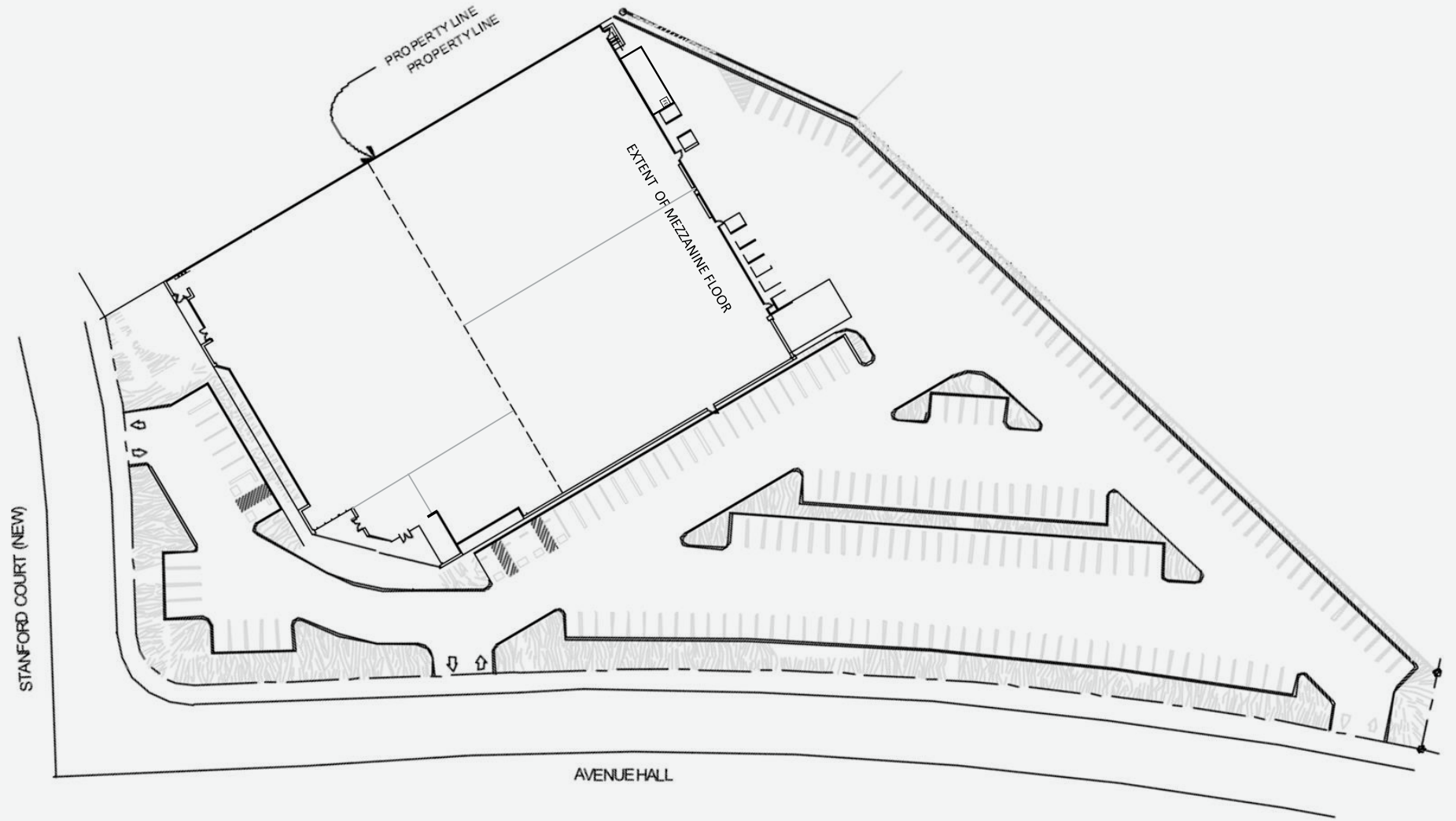
HVAC

100% Warehouse HVAC



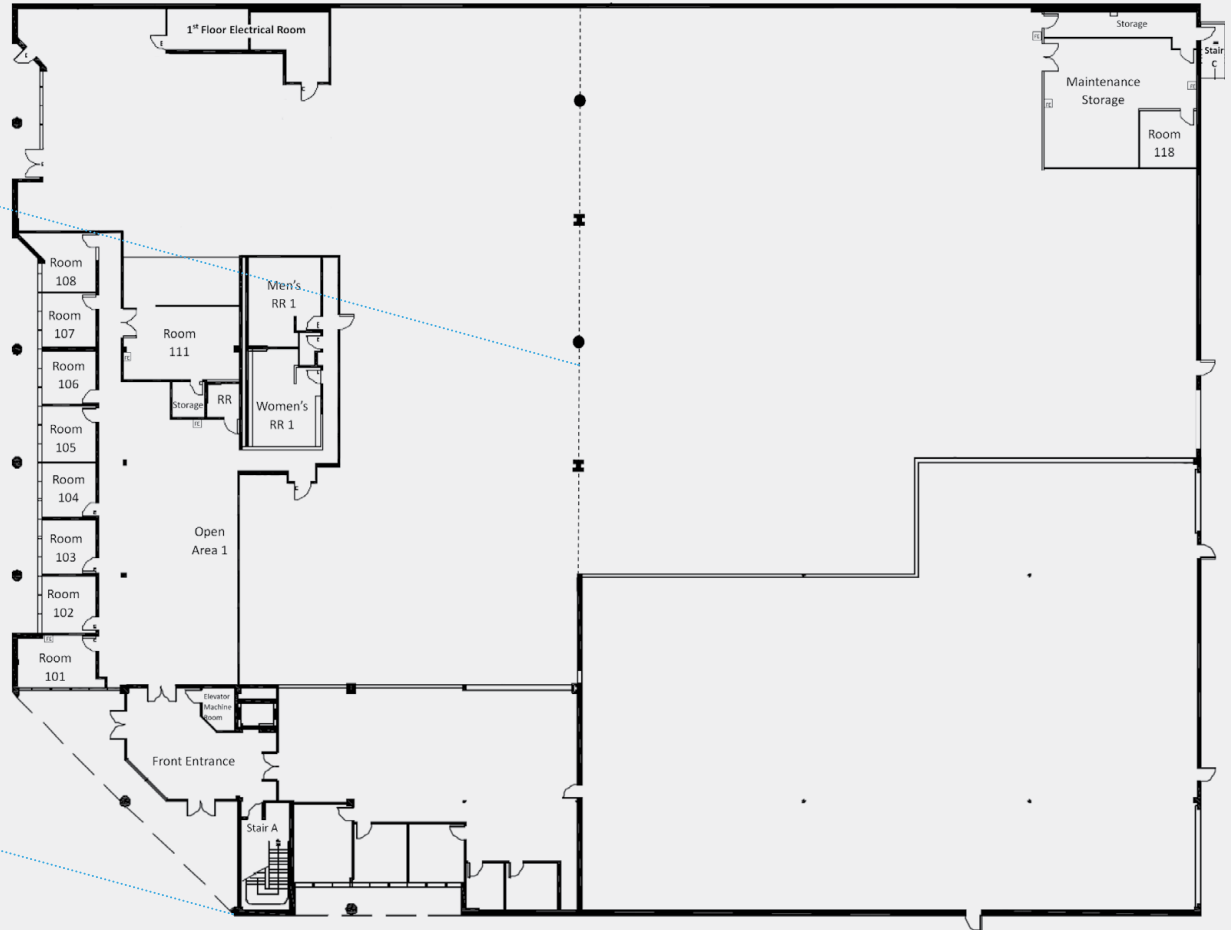
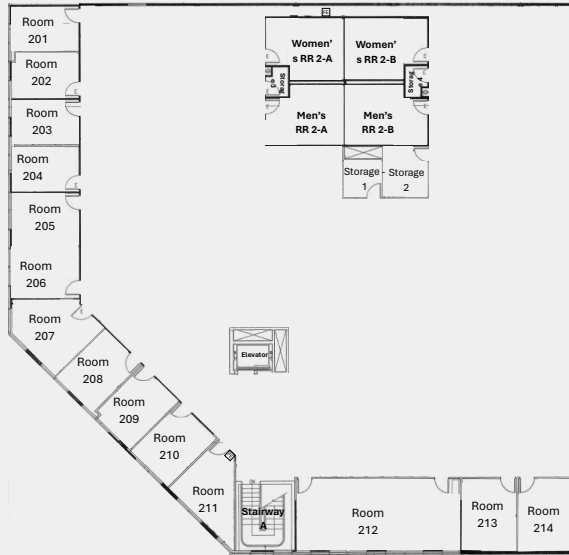






2ND FLOOR

1ST FLOOR



SANTA CLARITA

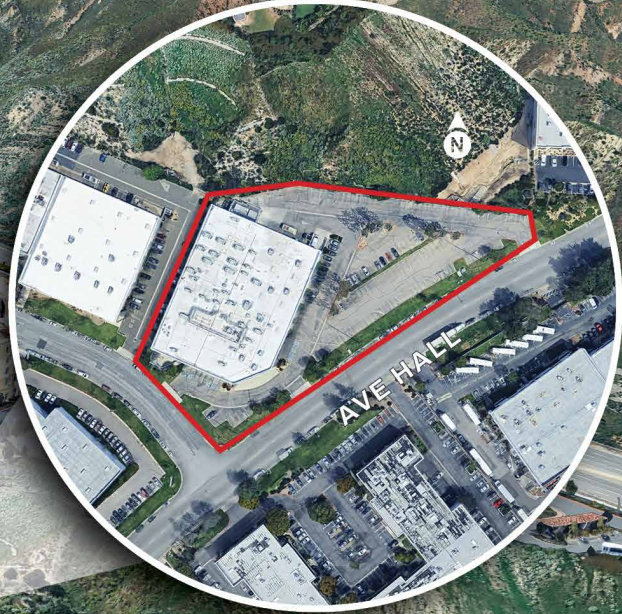


ON/OFF RAMP



AVENUE STANFORD

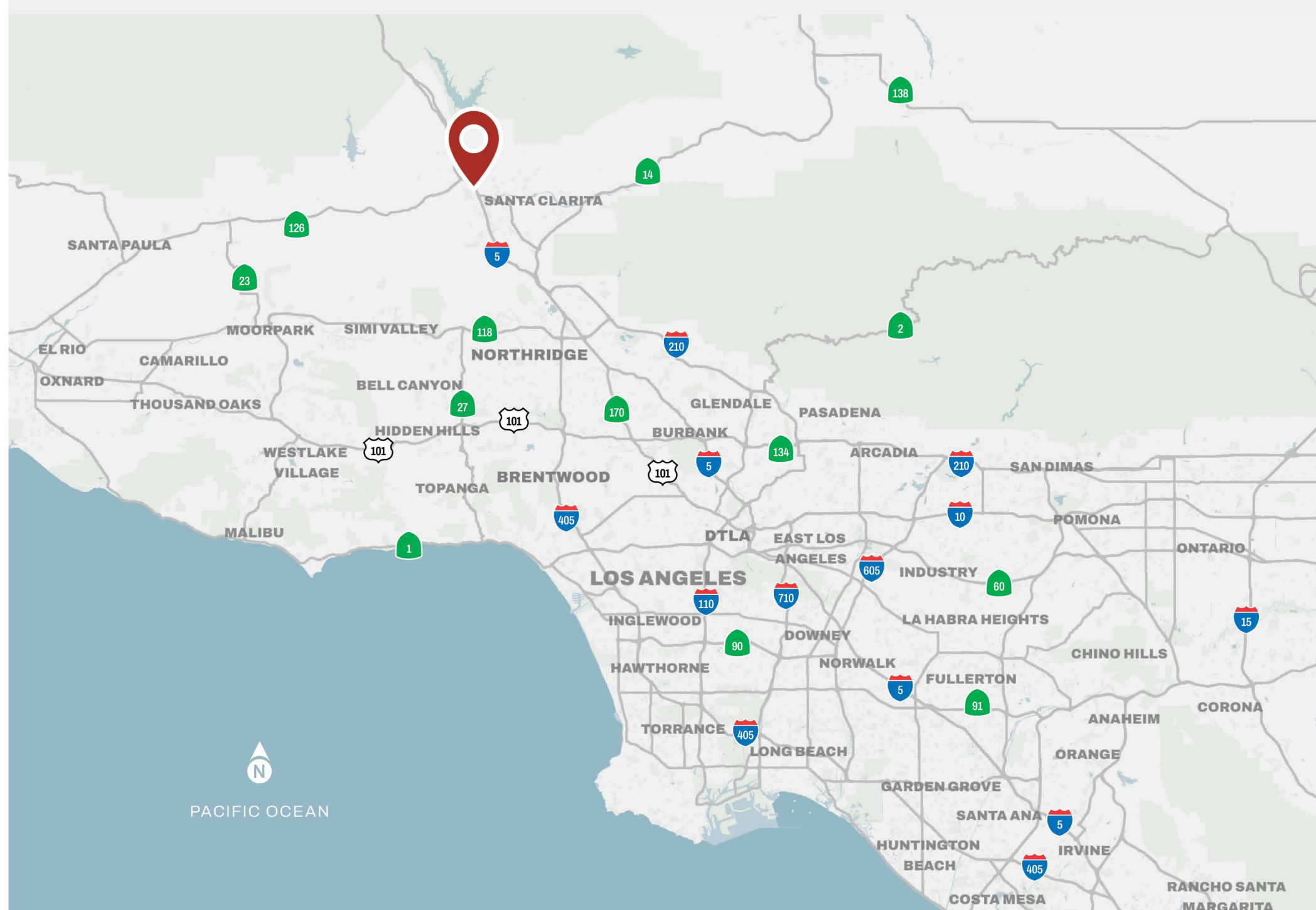
NEWHALL RANCH RD



SITE

TECHNOLOGY DR

AVE HALL



26081 AVENUE HALL

SANTA CLARITA, CA | 91355

Chris Jackson

CEO
818.933.2368
cjackson@naicapital.com
Cal DRE Lic #01255538

Eric Seidenglanz

Senior Vice President
818.815.2426
eseidenglanz@naicapital.com
Cal DRE Lic #01975684

NAI Capital

15821 Ventura Blvd Suite 320
Encino, CA 91436
818.905.2400
info@naicapital.com

© NAI Capital Commercial, Inc. Content in this document may include AI generated or alerted text, images and/or analysis. No warranty, express or implied, is made as to the accuracy of the information contained herein. This information is submitted subject to errors, omissions, change of price, rental or other conditions, withdrawal without notice, and is subject to any special listing conditions imposed by our principals. Cooperating brokers, buyers, tenants and other parties who receive this document should not rely on it, but should use it as a starting point of analysis, and should independently confirm the accuracy of the information contained herein through a due diligence review of the books, records, files and documents that constitute reliable sources of the information described herein. Unedited images viewable at naicapital.com | Cal DRE Lic #02130474

NAICapital
COMMERCIAL REAL ESTATE SERVICES, WORLDWIDE