

Owned & Operated By:



Retail Space Available

Anchor Opportunity

777 Bypass Road
Brandenburg, KY



Property Features

- + 36,169± square foot building available
- + 179' of frontage
- + Located on the Brandenburg Bypass with signalized access
- + Adjacent to Auto Zone and across from the area's only Kroger
- + Brandenburg, KY is just 16 miles northwest of Fort Knox, KY and just 40 miles southwest of Louisville, KY
- + Brandenburg is the county seat of Meade County and a part of the Louisville, KY MSA
- + Brandenburg Bypass traffic count: 14,253 CPD

Contact Us

Clay Hunt

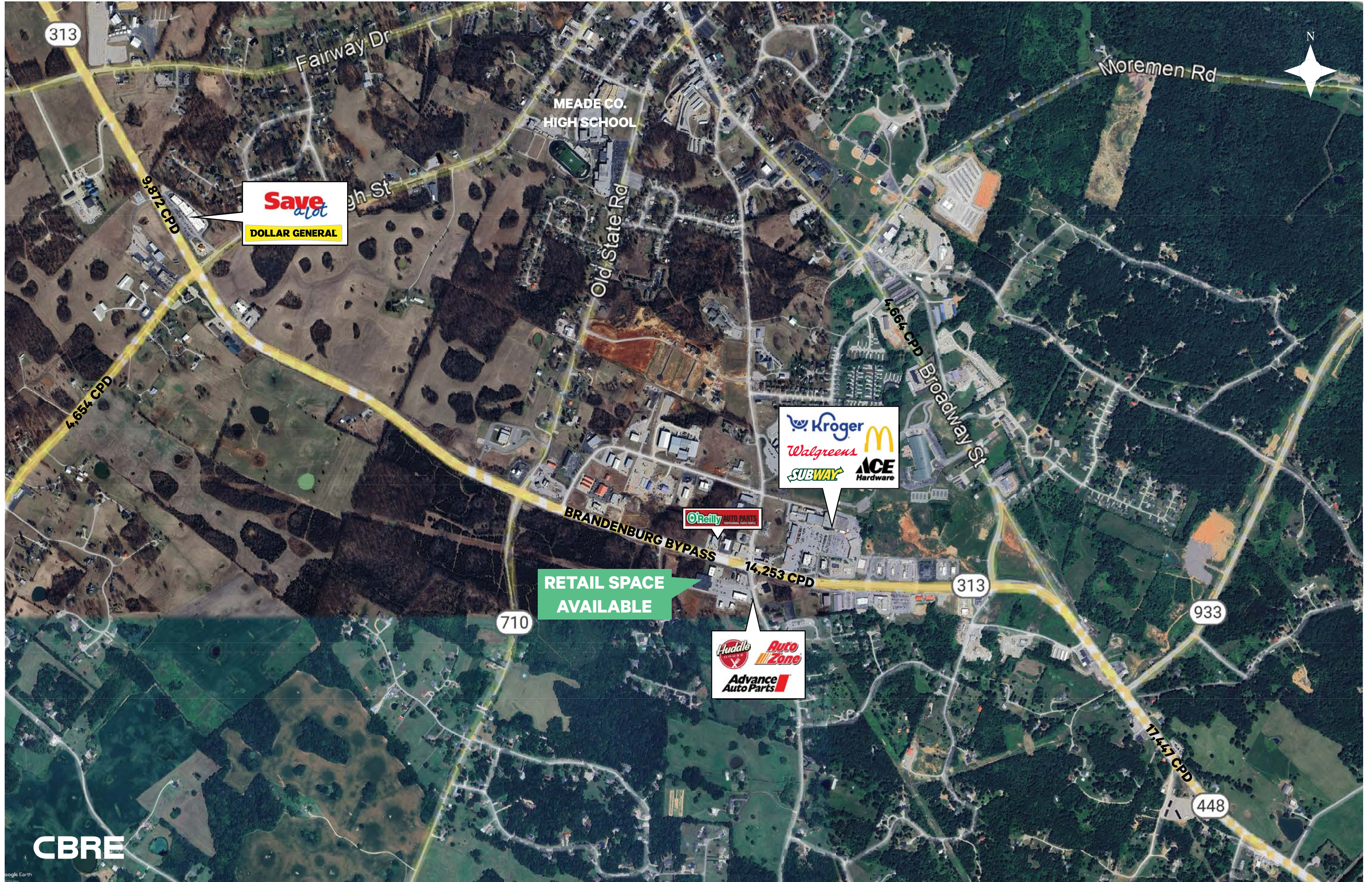
First Vice President
+1 502 412 7607
clay.hunt@cbre.com

Robert Schwartz

Senior Vice President
+1 502 412 7606
robert.schwartz@cbre.com

Bryan Schwartz

Associate
+1 502 412 7635
bryan.schwartz@cbre.com

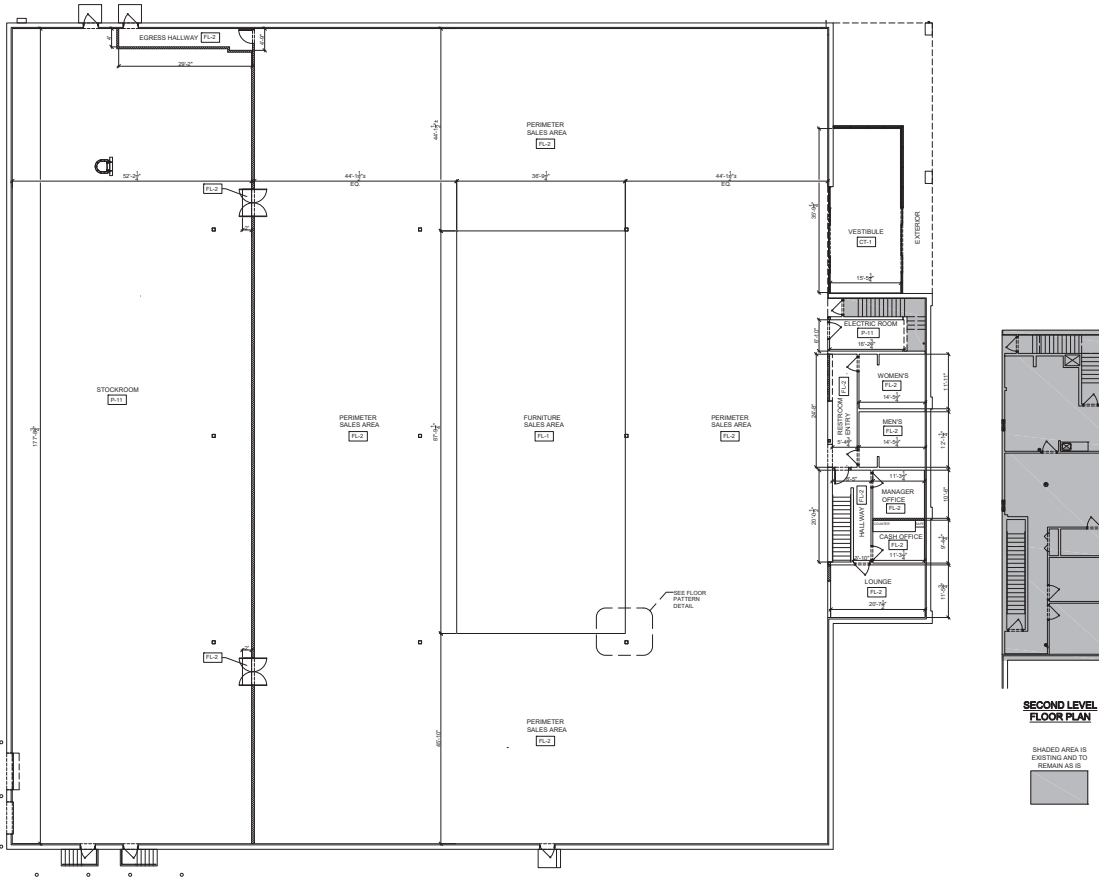


Retail Space Available

777 Bypass Road | Brandenburg, KY

For Lease

Floor Plan



2024 Estimated Demographics	5 Miles	10 Miles	15 Miles
Population	12,280	26,526	60,138
Daytime Population	10,991	21,018	48,065
Average Household Income	\$88,522	\$86,745	\$87,312

Contact Us

Clay Hunt

First Vice President
+1 502 412 7607
clay.hunt@cbre.com

Robert Schwartz

Senior Vice President
+1 502 412 7606
robert.schwartz@cbre.com

Bryan Schwartz

Associate
+1 502 412 7635
bryan.schwartz@cbre.com

© 2024 CBRE, Inc. All rights reserved. This information has been obtained from sources believed reliable but has not been verified for accuracy or completeness. CBRE, Inc. makes no guarantee, representation or warranty and accepts no responsibility or liability as to the accuracy, completeness, or reliability of the information contained herein. You should conduct a careful, independent investigation of the property and verify all information. Any reliance on this information is solely at your own risk.