



100,000 SF - 260,000 SF available for lease

7021 Wolftown-Hood Rd., Madison, VA

Leigh Hughes

Vice President
+1 434 284 4007
leigh.hughes@colliers.com

Rob Stockhausen, CCIM

Managing Director
+1 434 284 4004
rob.stockhausen@colliers.com

Colliers
701 E. Water Street, Suite 301
Charlottesville, VA 22902
P: +1 434 974 7377





Former Plow & Hearth HQ

Property Profile

- Best suited for **industrial warehousing and manufacturing**, 100,000 SF - 260,000 SF of warehouse space with 60,000 SF of well-built office/open space
- Originally built in 1995, owner added 60,000 SF of warehouse space and new lobby in 2015
- Only large industrial offering on Rte 29N between Charlottesville, VA and Gainesville, VA (just south of DC)
- Large pylon signage opportunity
- Easy building access for shipping/distribution at 18 dock height doors, along with 3 drive-in doors
- Available Q1 2025 at \$6.75 SF, NNN



7021 Wolfstown-Hood Rd.

Building Specifications

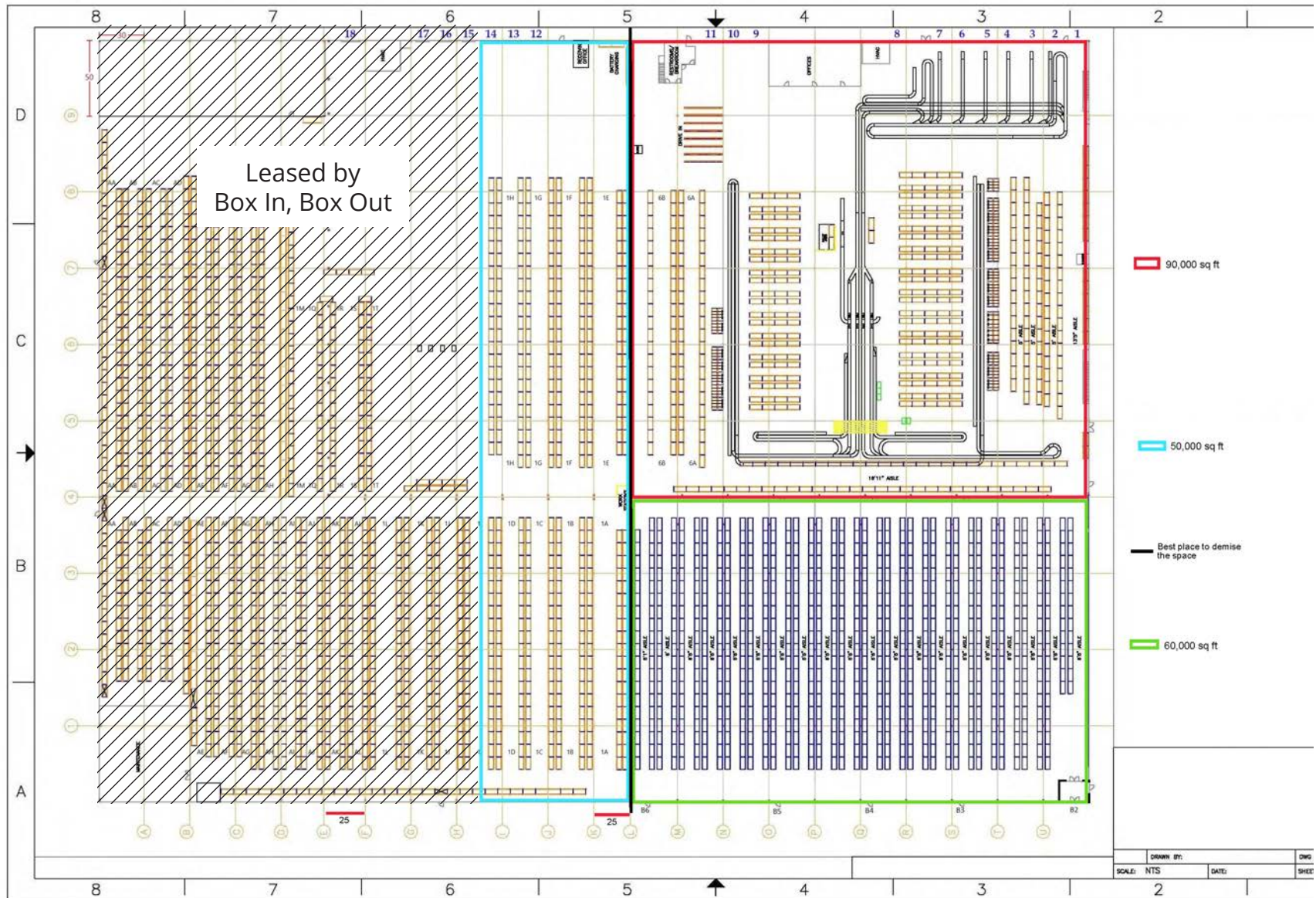
Address	7021 Wolfstown-Hood Rd., Madison, VA
Building Size	385,000 SF - 100,000-200,000 SF Warehouse space available for lease - 15,000-60,000 SF Office space available for lease
Acres	39.55
Zoning	M-1
Ceiling height	28-32'
Power	3 Phase/480V, 2000 Amps
	Heated, not cooled Warehouse space
Sprinklers	ESFR
Docks	18 dock height doors with 3 drive in doors.
Parking Spaces	350

- Conveyor belt system in place
- Office space includes private offices, large front windows, call center/cubical space, large conference and meeting areas
- Fantastic lobby/reception area fronts the office space(s)
- Building offers a cafeteria style area for break/meals

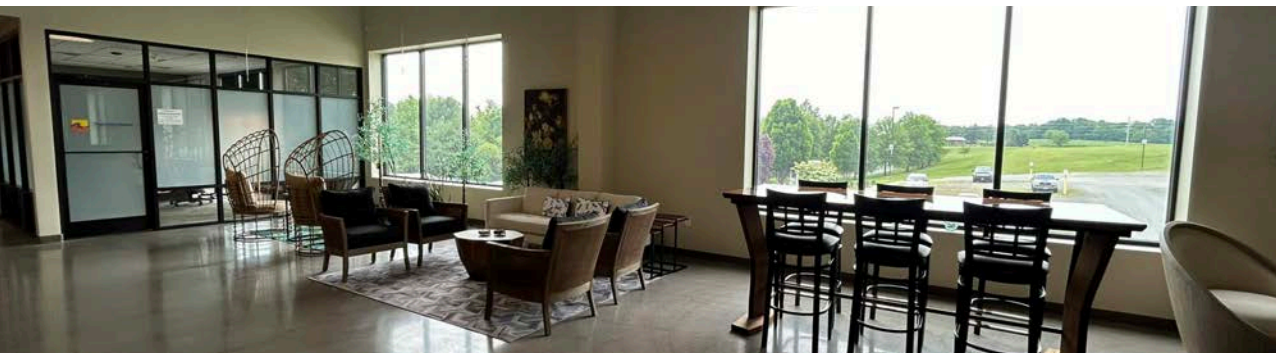
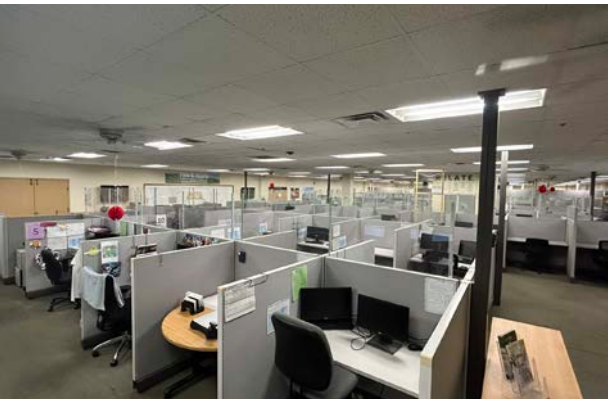
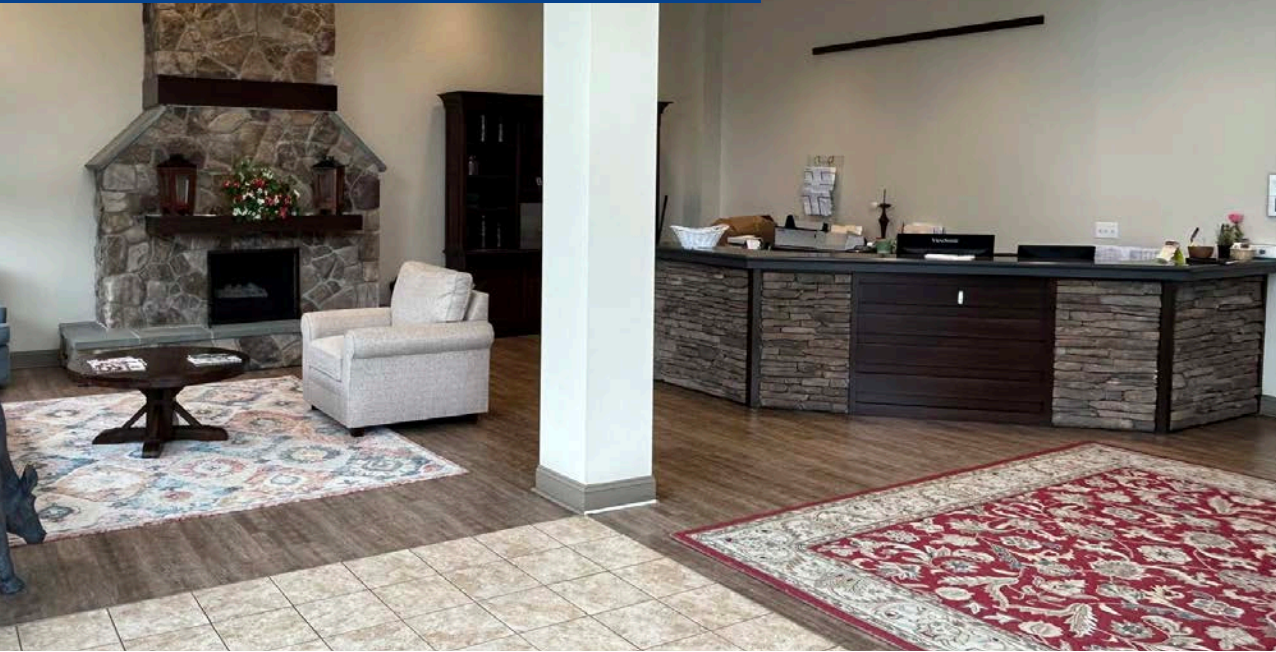


7021 Wolftown-Hood Rd.

100,000-200,000 SF warehouse space



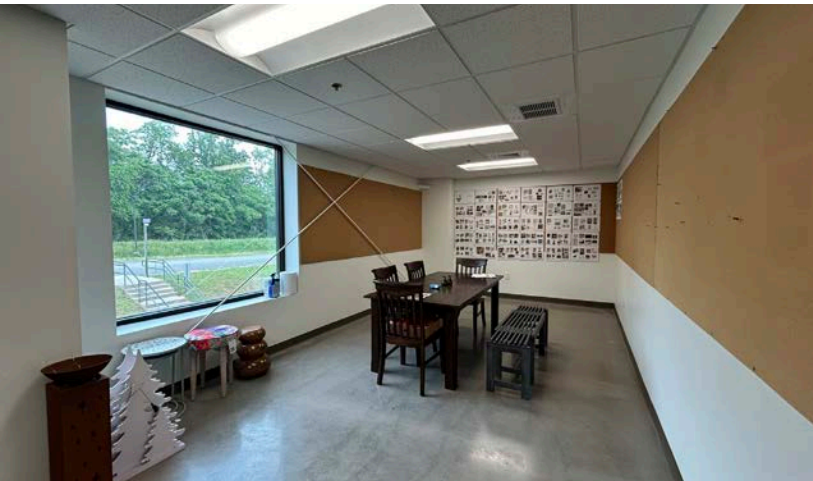
7021 Wolfstown-Hood Rd.



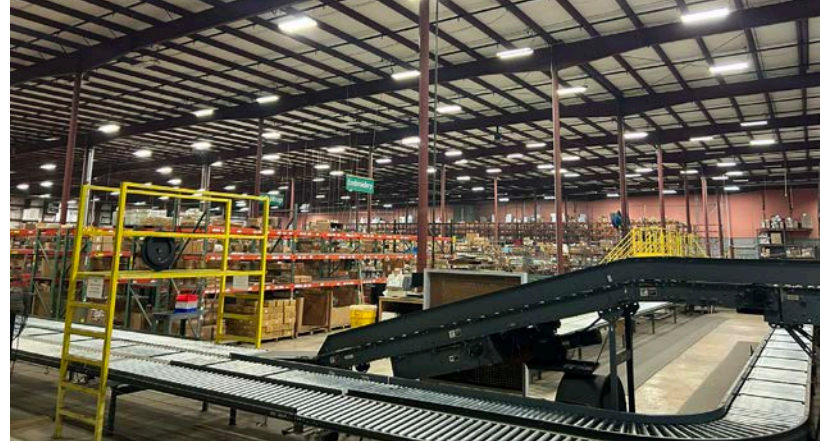
7021 Wolftown-Hood Rd.



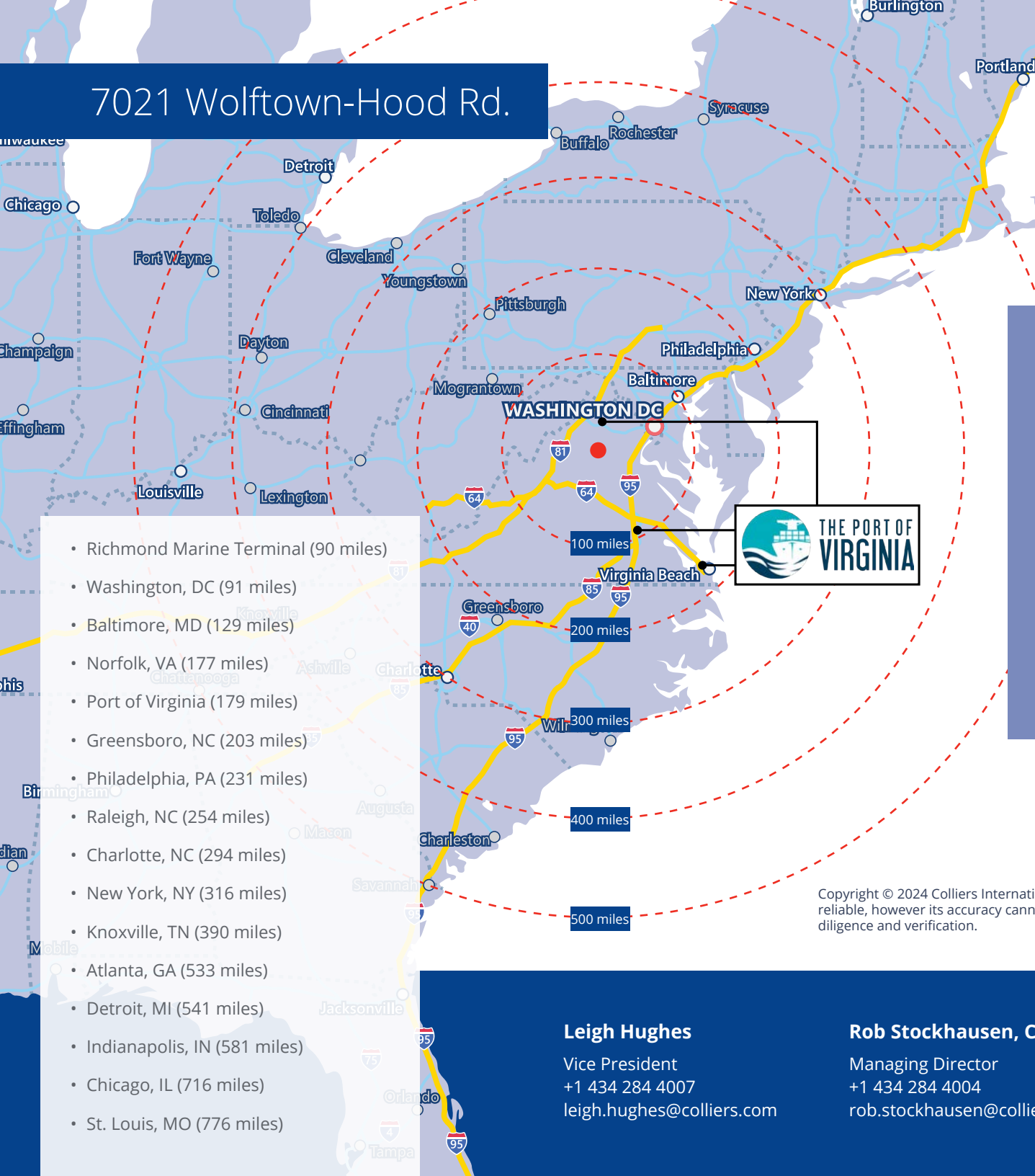
15,000-60,000 SF
office space



7021 Wolftown-Hood Rd.



7021 Wolftown-Hood Rd.



- Richmond Marine Terminal (90 miles)
- Washington, DC (91 miles)
- Baltimore, MD (129 miles)
- Norfolk, VA (177 miles)
- Port of Virginia (179 miles)
- Greensboro, NC (203 miles)
- Philadelphia, PA (231 miles)
- Raleigh, NC (254 miles)
- Charlotte, NC (294 miles)
- New York, NY (316 miles)
- Knoxville, TN (390 miles)
- Atlanta, GA (533 miles)
- Detroit, MI (541 miles)
- Indianapolis, IN (581 miles)
- Chicago, IL (716 miles)
- St. Louis, MO (776 miles)

Location Details

- Madison County, Virginia
- Located less than one mile from Rte 29
- Property is 26 miles north of I-64
- Approximately 34 miles west of I-81, accessible via Rte 33W
- 15 miles north of Albemarle County/Charlottesville
- 58 miles south of I-66/DC connector



Copyright © 2024 Colliers International. Information herein has been obtained from sources deemed reliable, however its accuracy cannot be guaranteed. The user is required to conduct their own due diligence and verification.

Leigh Hughes
Vice President
+1 434 284 4007
leigh.hughes@colliers.com

Rob Stockhausen, CCIM
Managing Director
+1 434 284 4004
rob.stockhausen@colliers.com