

AVAILABLE FOR LEASE
UP TO 163,000 SF



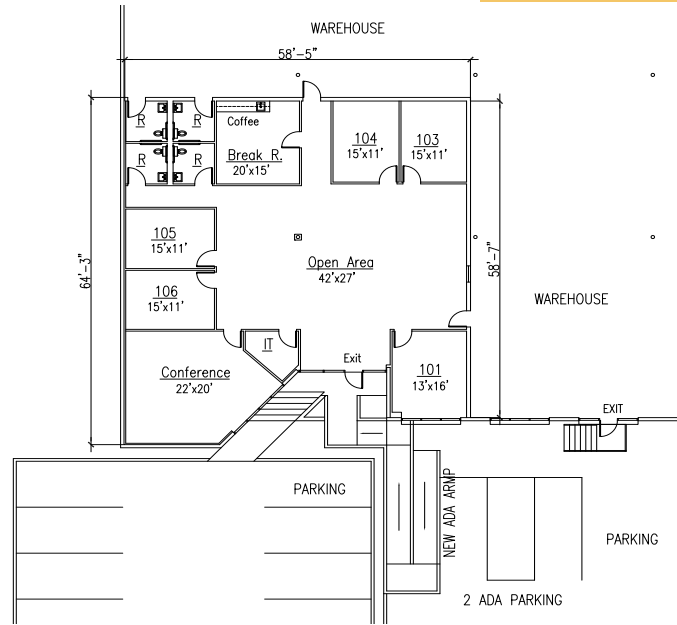
WALLISVILLE INDUSTRIAL PARK

8790 WALLISVILLE ROAD HOUSTON, TX 77029



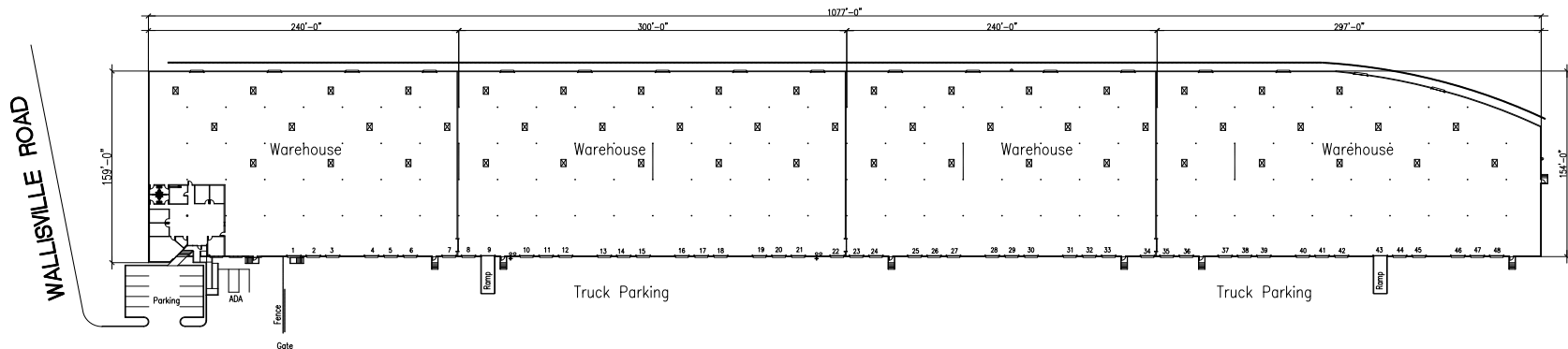
PROPERTY HIGHLIGHTS

Available:	163,000 SF Total Building
Office Area:	3,464 SF - New Construction / Spec Office
Warehouse Area:	159,575 SF
Land Area	6.69 Acres
Clear Height:	24'
Dock-high Doors:	46
Drive-In Ramp:	1
Rail Served Doors:	17
Column Spacing:	30' x 30'
Sprinkler System:	Fully Sprinklered
Building Depth:	150'
Warehouse Lighting:	LED
Roof Age	New - 2024



- Close Proximity to Houston Ship Channel
- Excellent Access to I-10 and 610 Loop
- Freestanding Building
- Available April 2025

BUILDING PLAN





For more information,
please contact:

JOHN KRUSE
 Managing Director
 Direct: +1 281 688 9234
 Mobile: +1 713 304 4919
john.kruse@cushwake.com

©2024 Cushman & Wakefield. All rights reserved. The information contained in this communication is strictly confidential. This information has been obtained from sources believed to be reliable but has not been verified. NO WARRANTY OR REPRESENTATION, EXPRESS OR IMPLIED, IS MADE AS TO THE CONDITION OF THE PROPERTY (OR PROPERTIES) REFERENCED HEREIN OR AS TO THE ACCURACY OR COMPLETENESS OF THE INFORMATION CONTAINED HEREIN, AND SAME IS SUBMITTED SUBJECT TO ERRORS, OMISSIONS, CHANGE OF PRICE, RENTAL OR OTHER CONDITIONS, WITHDRAWAL WITHOUT NOTICE, AND TO ANY SPECIAL LISTING CONDITIONS IMPOSED BY THE PROPERTY OWNER(S). ANY PROJECTIONS, OPINIONS OR ESTIMATES ARE SUBJECT TO UNCERTAINTY AND DO NOT SIGNIFY CURRENT OR FUTURE PROPERTY PERFORMANCE.

AERIAL MAP