

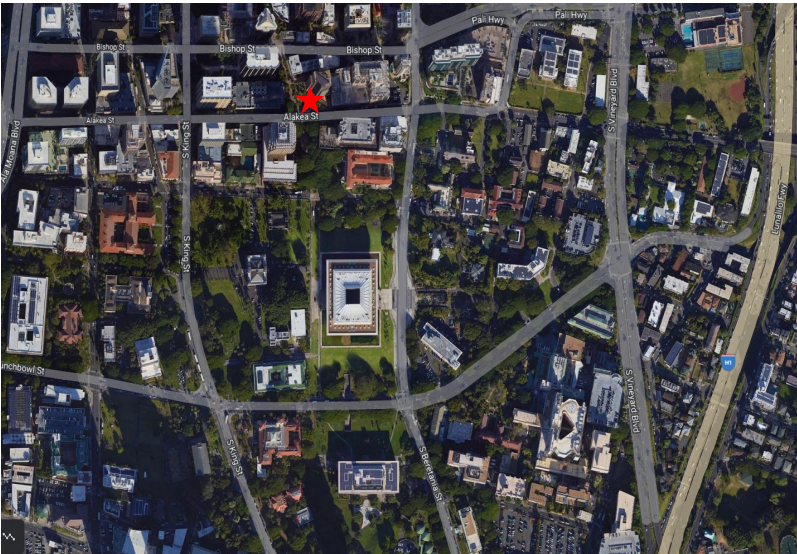
±2,938 SF

Office Space For Lease



STANFORD CARR DEVELOPMENT, LLC

1100 Alakea Street, 24th Floor, Suite #2401, Honolulu, Hawaii 96813



LOCATION

- Prominent Location in Downtown Honolulu
- Convenient Access to H1 and Pali Hwy
- Close Proximity to Daniel K. Inouye International Airport

FACILITY

- ±2,938 SF of Rentable Office
- Fully Furnished with Cubicles, Office Chairs, Desks, and File Cabinets
- ±8'4" Ceiling Height
- Two (2) Private Offices
- ±535 SF Training Room
- Covered Parking Stalls Available for Rent
- Building Security On-site

AMENITIES

- Walking Distance to Restaurants and Food Vendors
- Less Than Two (2) Miles to Costco Wholesale, The Home Depot, and Walmart

±2,938 SF

Office Space For Lease



STANFORD CARR DEVELOPMENT, LLC

FURNISHED FLOOR PLAN



STANFORD CARR DEVELOPMENT, LLC

Stanford Carr Development, LLC

Reyn Kimura

rkimura@stanfordcarr.com

ph (808) 537-5220 ext. 227

1100 Alakea Street, 27th Floor

Honolulu, Hawaii 96813

No warranty or representation, expressed or implied, is made as to the accuracy of the information contained herein, and same is submitted subject to error and omissions. Prospective Tenant should conduct a careful, independent investigation of the property and verify all information.

±2,938 SF

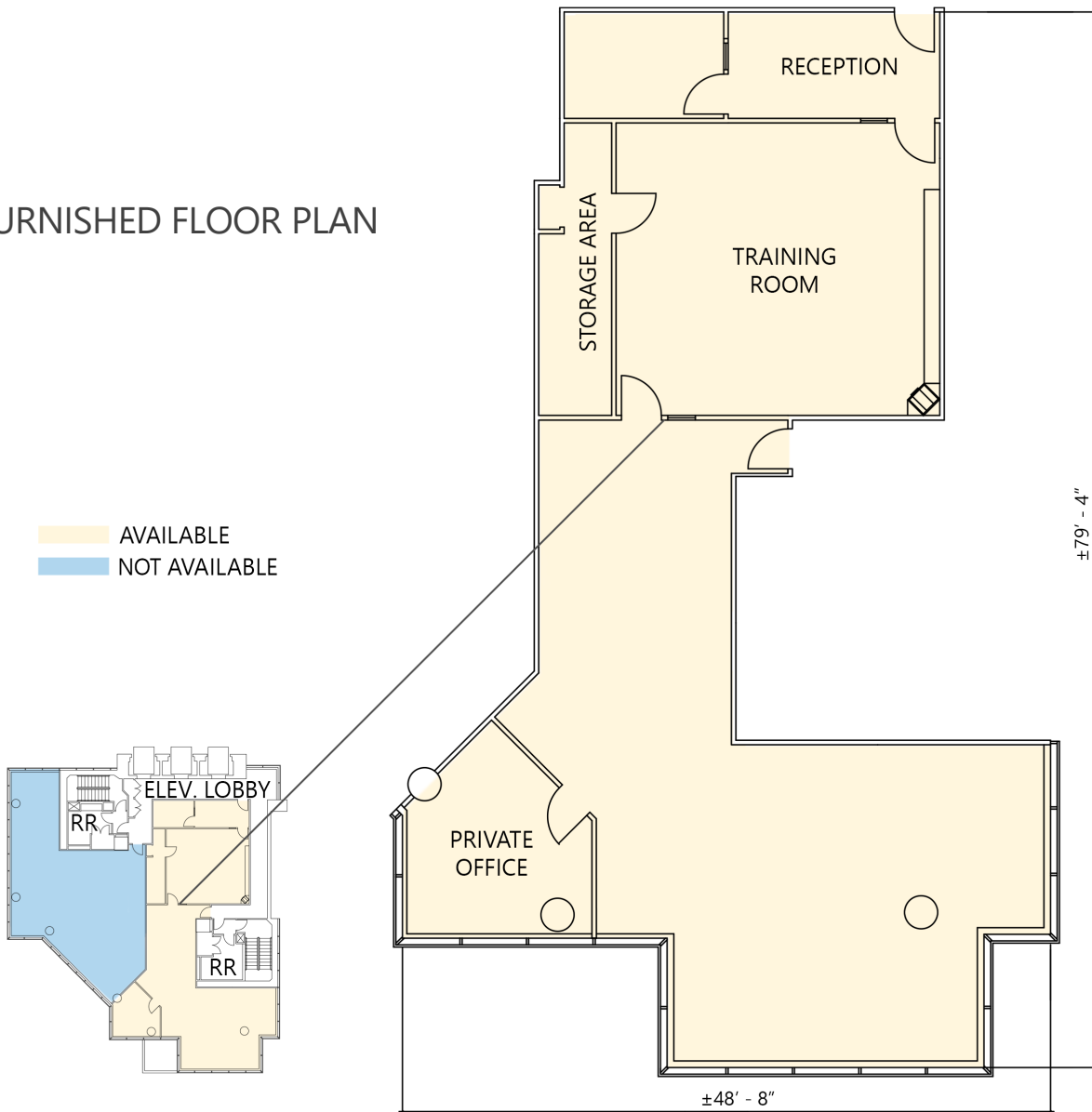
Office Space For Lease



STANFORD CARR DEVELOPMENT, LLC

UNFURNISHED FLOOR PLAN

AVAILABLE
NOT AVAILABLE



STANFORD CARR DEVELOPMENT, LLC

Stanford Carr Development, LLC

Reyn Kimura

rkimura@stanfordcarr.com

ph (808) 537-5220 ext. 227

1100 Alakea Street, 27th Floor

Honolulu, Hawaii 96813

No warranty or representation, expressed or implied, is made as to the accuracy of the information contained herein, and same is submitted subject to error and omissions. Prospective Tenant should conduct a careful, independent investigation of the property and verify all information.