

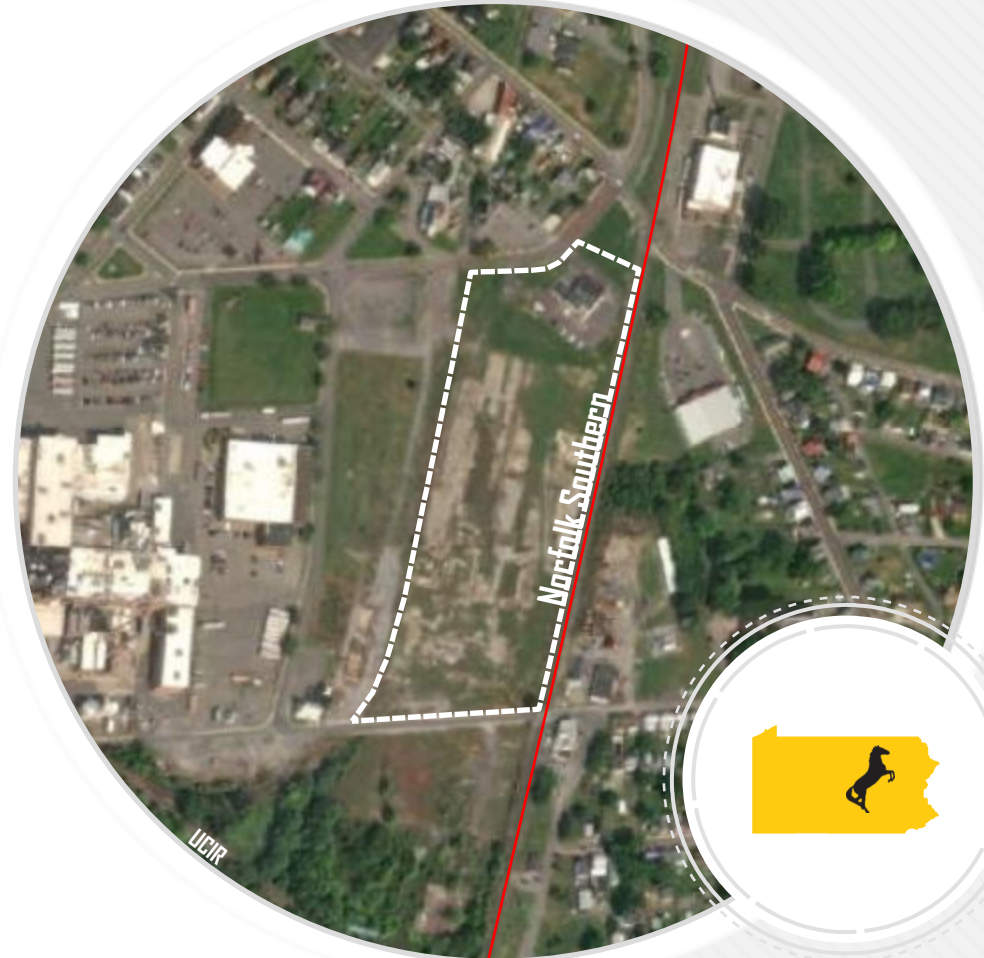
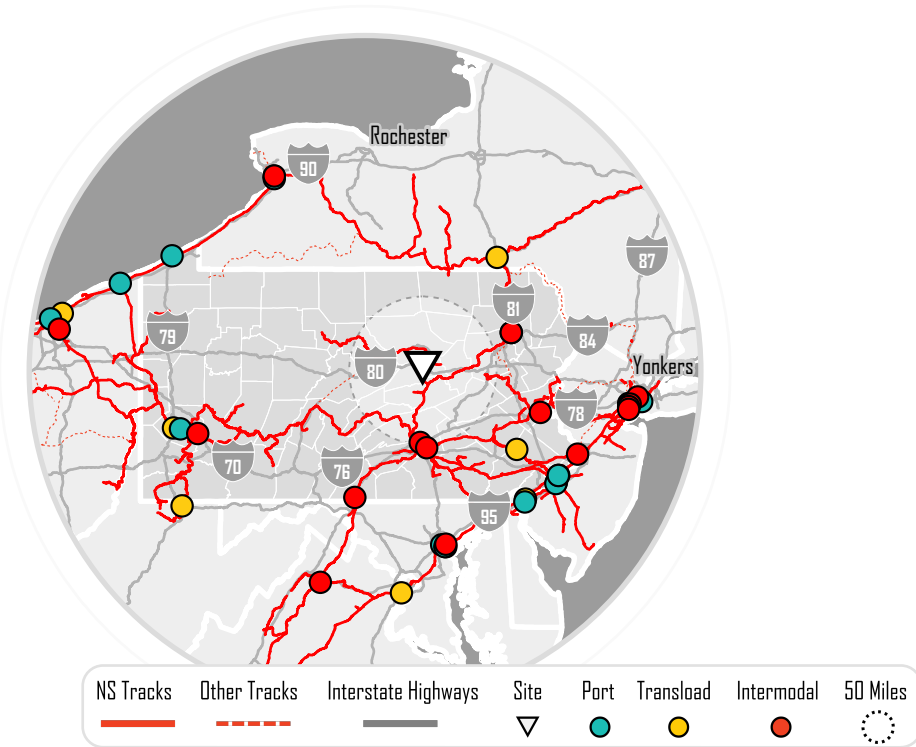
STAIMAN SITE

City: Milton | County: Northumberland | State: PA

11 ACRES

NS Site Type: SITE AVAILABLE

- **Ownership:** Single Owner
- **Zoning:** Industrial
- ▼ **Map:** Transportation Assets



-76.854167°, 41.011667°

6/7/2023



Direct Rail Service
Norfolk Southern Railway



Interstate 80
Proximity To Interchange: 3 miles



Harrisburg International Airport
Proximity: 76 miles

For more information about this site please contact >>

Amanda Barber: Industrial Development Manager

Phone: 470-580-2748

Email: amanda.barber3@nscorp.com

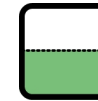




Site Description:

Largest Contiguous Area: 11 Acres

Total Site Area: 11 Acres



Topography: Level

Min Elevation: 465 FT.

Max Elevation: 475 FT.



Utility Providers:

Electric: PPL Electric Utilities Corp.

Gas: UGI Utilities, Inc.

Water: PA American Water Co.

Sewer: Milton Regional Sewer Auth.



Sustainability:

Railroads are on average 75% more efficient than truck, moving a ton of freight 470 miles on a single gallon of fuel. This is becoming increasingly important to companies as they set targets to reduce supply chain emissions.

Learn more about Norfolk Southern's industry-leading sustainability efforts and how we can partner with you to both lower and offset your carbon footprint, making the world a greener place.

<http://www.nscorp.com/content/nscorp/en/about-ns/sustainability/carbon-calculator.html>