

FOR SUBLEASE

511 S. Harbor Blvd., Ste C
La Habra, CA 90631

Industrial /
Flex Condo
±5,917 SF



THE OFFERING

A premium industrial/flex condo is available for sublease in La Habra, CA. This high-quality building was constructed in 2007 and offers ±5,917 sq ft of total space, including a two-story office area of ±2,251 sq ft. The property features modern design and amenities such as 13 dedicated parking spaces, one ground level door for easy access, and fire sprinklers in the warehouse for enhanced safety. Located conveniently with access to major highways and amenities, this high-image building is ideal for various business operations.

PROPERTY HIGHLIGHTS

Size:	±5,917 SF High Image Industrial / Flex Condo
Office:	±2,251 SF (2 story office)
GL Door:	One (1) 12'x14'
Parking Spaces:	Thirteen (13)
Power:	400 amps 120/208 (Lessee to Verify)
Clear Height:	22'
Fire Sprinklers:	Yes
Year Built:	2007
Partial Racking System	Included



Daniel Son

Agent | Lee & Associates

C: 714.315.0877

dson@lee-associates.com

DRE# 02078285



John Son

Principal | Lee & Associates

C: 562.665.1199

json@lee-associates.com

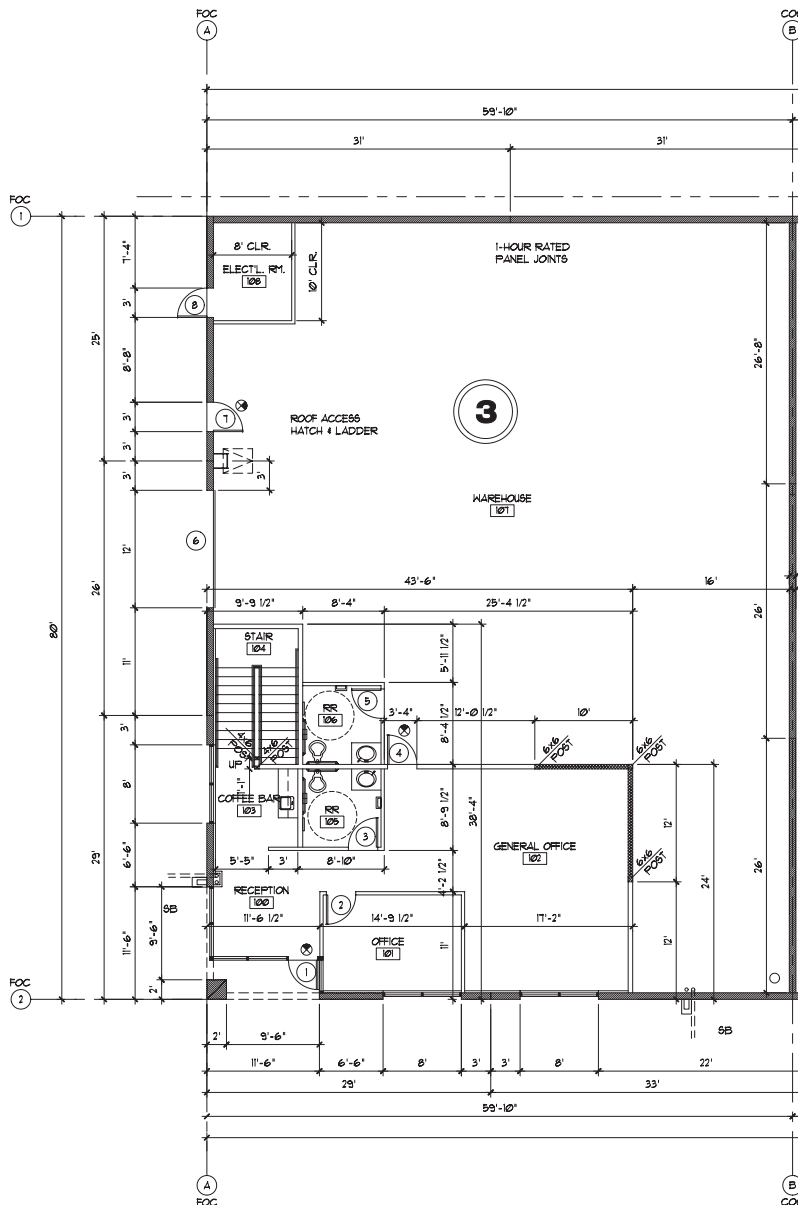
DRE# 01069091

FOR SUBLEASE

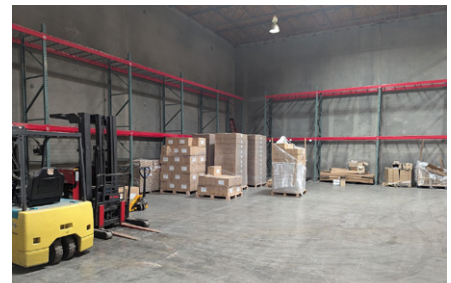
511 S. Harbor Blvd., Ste C
La Habra, CA 90631

Industrial /
Flex Condo
±5,917 SF

FLOOR PLAN



PHOTOS



Daniel Son

Agent | Lee & Associates

C: 714.315.0877

dson@lee-associates.com

DRE# 02078285



John Son

Principal | Lee & Associates

C: 562.665.1199

json@lee-associates.com

DRE# 01069091

FOR SUBLEASE

511 S. Harbor Blvd., Ste C
La Habra, CA 90631

Industrial /
Flex Condo
±5,917 SF

THE CITRUS INDUSTRIAL PARK



Daniel Son

Agent | Lee & Associates

C: 714.315.0877

dson@lee-associates.com

DRE# 02078285



John Son

Principal | Lee & Associates

C: 562.665.1199

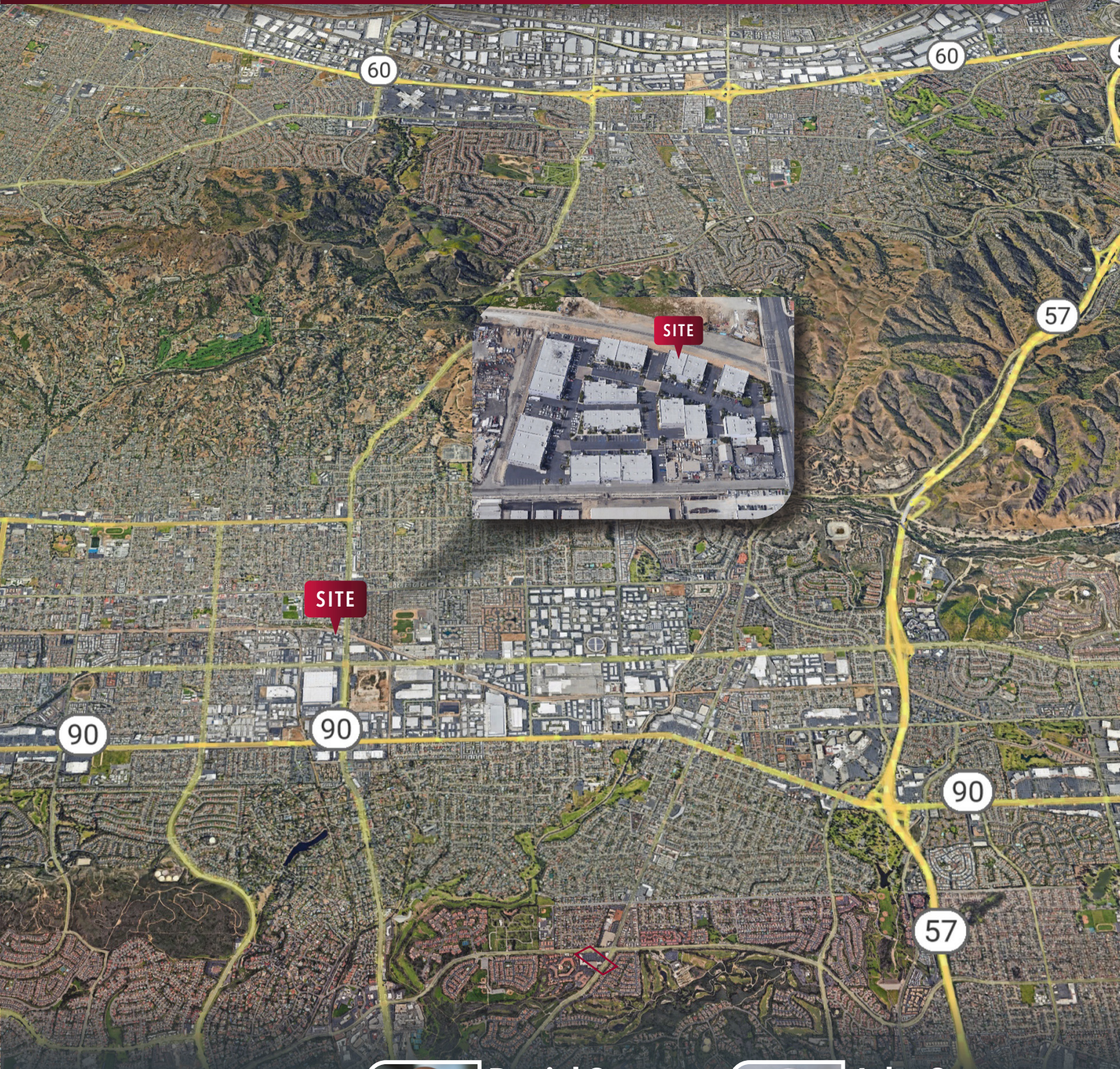
json@lee-associates.com

DRE# 01069091

FOR SUBLEASE

511 S. Harbor Blvd., Ste C
La Habra, CA 90631

Industrial /
Flex Condo
±5,917 SF



LEE & ASSOCIATES
COMMERCIAL REAL ESTATE SERVICES



Daniel Son

Agent | Lee & Associates

C: 714.315.0877

dson@lee-associates.com

DRE# 02078285



John Son

Principal | Lee & Associates

C: 562.665.1199

json@lee-associates.com

DRE# 01069091