



### Property Description

This 30,753 SF was the previous home to the Department of Human Services. The space is ideally suited for institutional or office use. Plenty of parking and quick access to I-40 just a mile away.

### Property Highlights

- 30,753 SF Available
- Plentiful Parking
- Close Interstate Access
- Can be Divided

### Offering Summary

Lease Rate:	\$12.00 SF/yr (MG)
Available SF:	30,753 SF
Building Size:	30,753 SF

Demographics	1 Mile	3 Miles	5 Miles
Total Households	1,987	13,068	33,822
Total Population	5,085	32,132	83,607
Average HH Income	\$62,106	\$58,102	\$54,596

**RICK PRITCHETT, CCIM**

405.605.0825

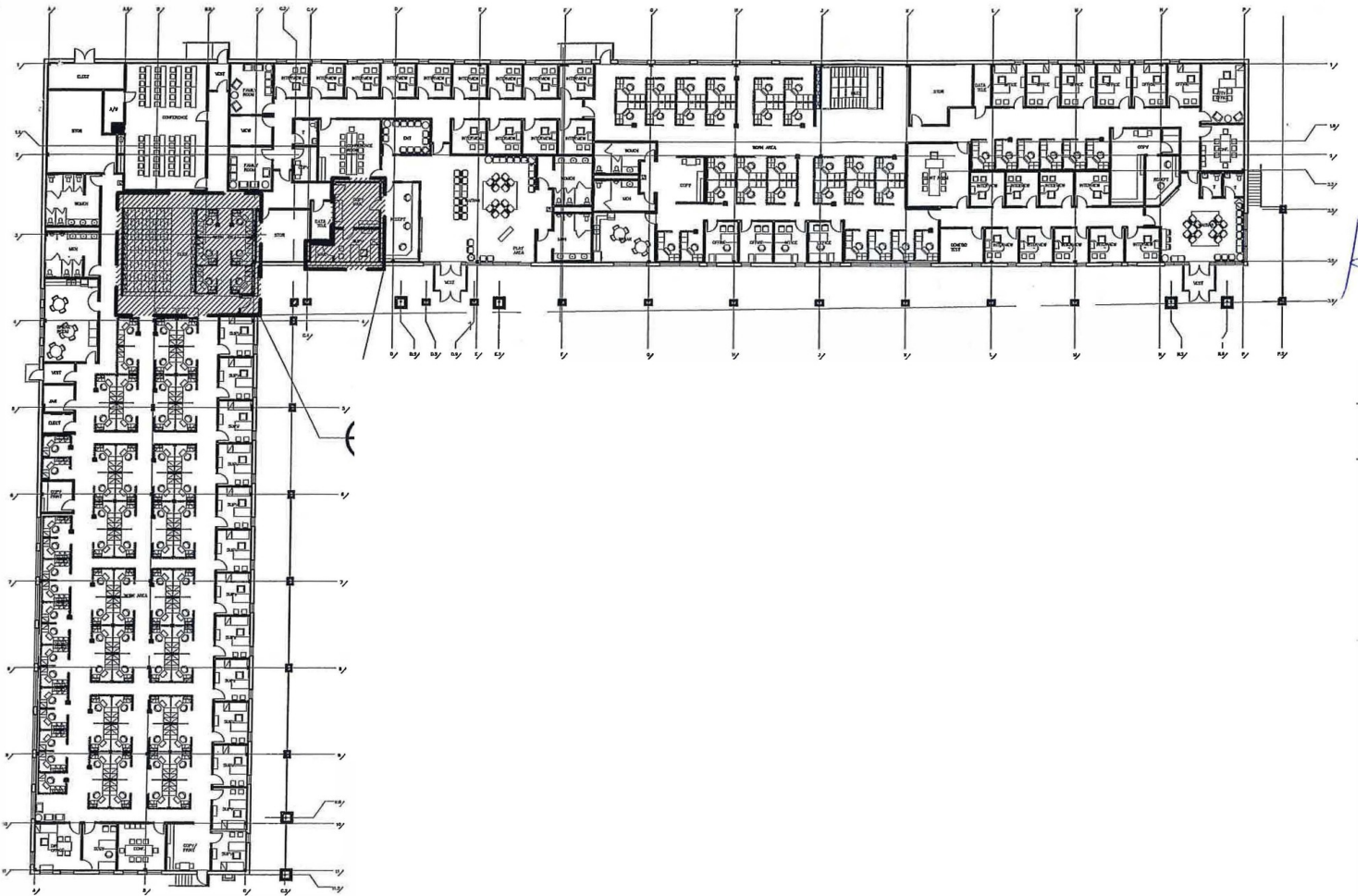
rick@precorruffin.com



For Lease

9901 SE 29th Street

9901 SE 29TH STREET



**RICK PRITCHETT, CCIM**

405.605.0825

rick@precorruffin.com



**PRECORRUFFIN**

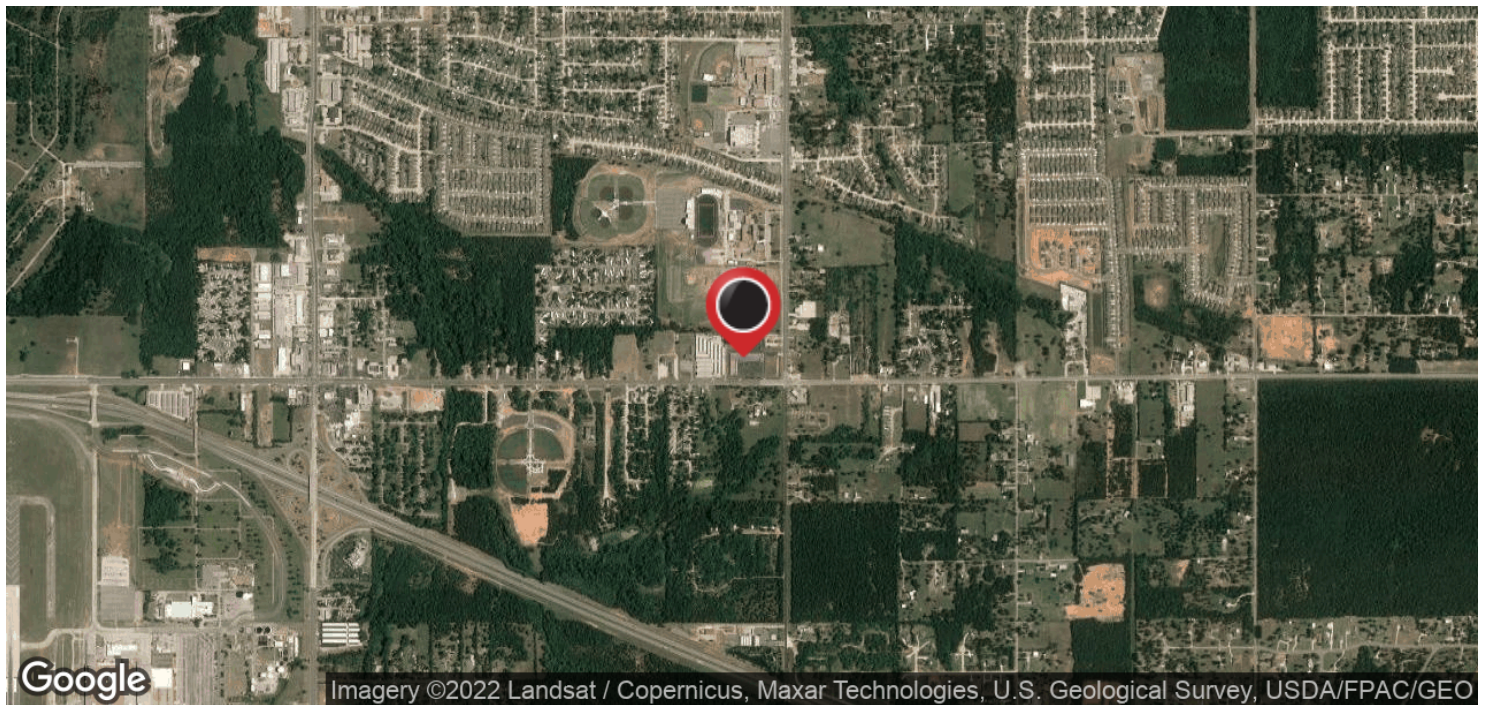
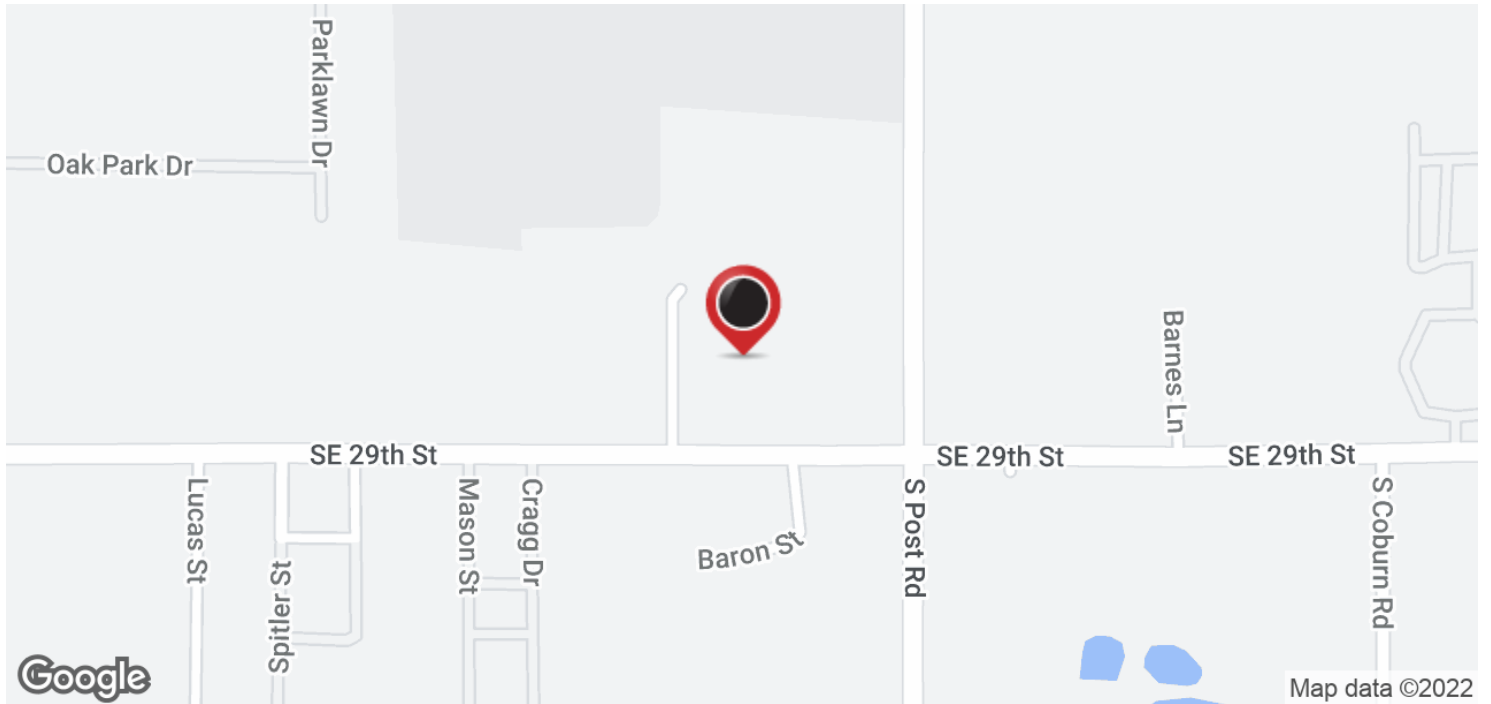
PRECOR RUFFIN | 825 N. BROADWAY, SUITE 300, OKLAHOMA CITY, OK 73102 | 405.605.0825 | PRECORRUFFIN.COM

The information above has been obtained from sources believed reliable. While we do not doubt its accuracy, PrecorRuffin, LLC has not verified it and makes no guarantee, warranty or representation about it. It is your responsibility to independently confirm its accuracy.

For Lease

9901 SE 29th Street

9901 SE 29TH STREET



**RICK PRITCHETT, CCIM**

405.605.0825

rick@precorruffin.com



PRECOR RUFFIN | 825 N. BROADWAY, SUITE 300, OKLAHOMA CITY, OK 73102 | 405.605.0825 | PRECORRUFFIN.COM

The information above has been obtained from sources believed reliable. While we do not doubt its accuracy, PrecorRuffin, LLC has not verified it and makes no guarantee, warranty or representation about it. It is your responsibility to independently confirm its accuracy.