

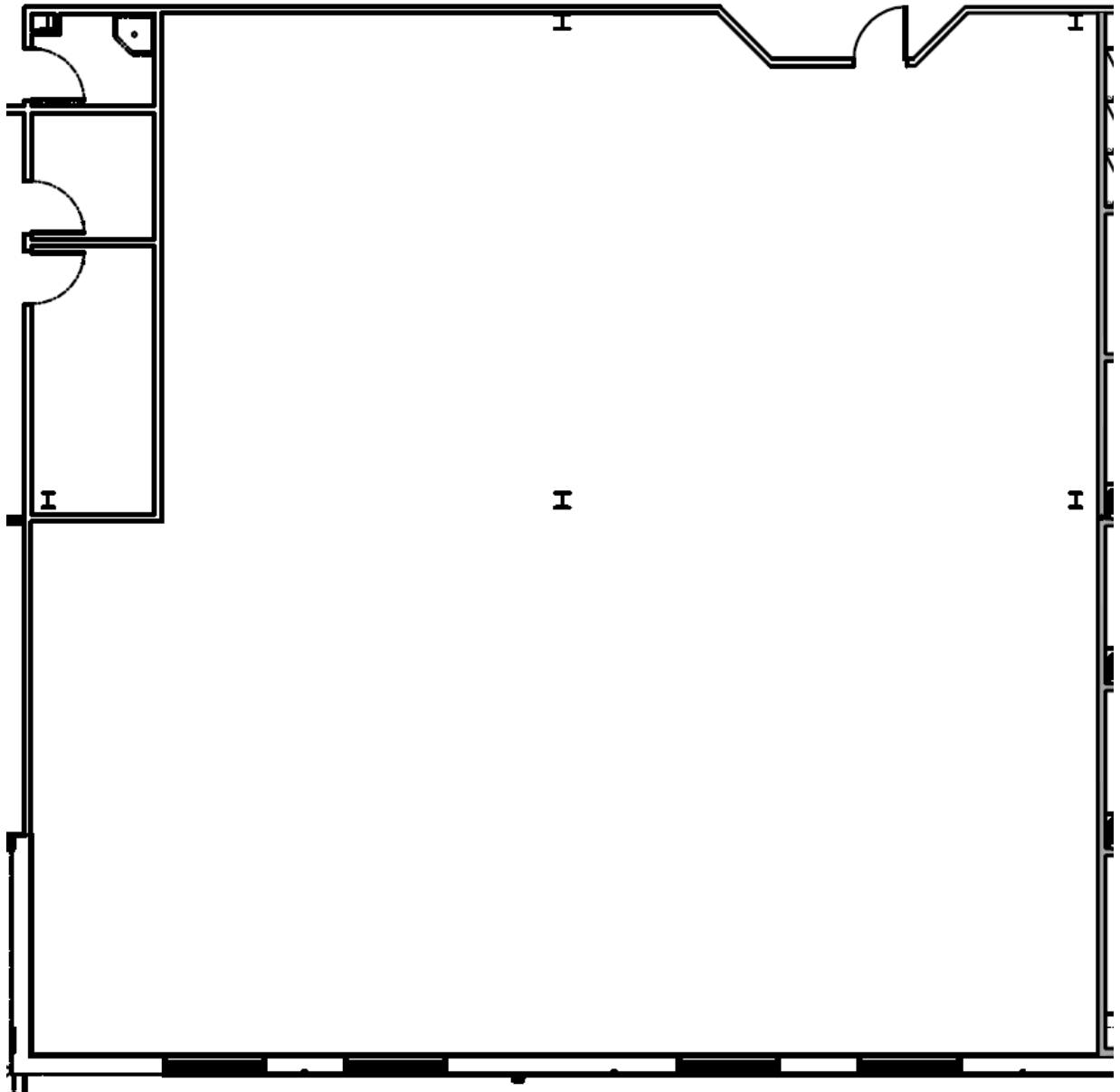
SUNNYVALE MEDICAL PLAZA

Suite Plan

341 WHEATFIELD DRIVE
SUNNYVALE, TX 75182

Suite 280

3,796 SF



CONTACT LILLIBRIDGE



Jinny Saad, Leasing Manager

(512) 961-7336

Jinny.Saad@Lillibridge.com